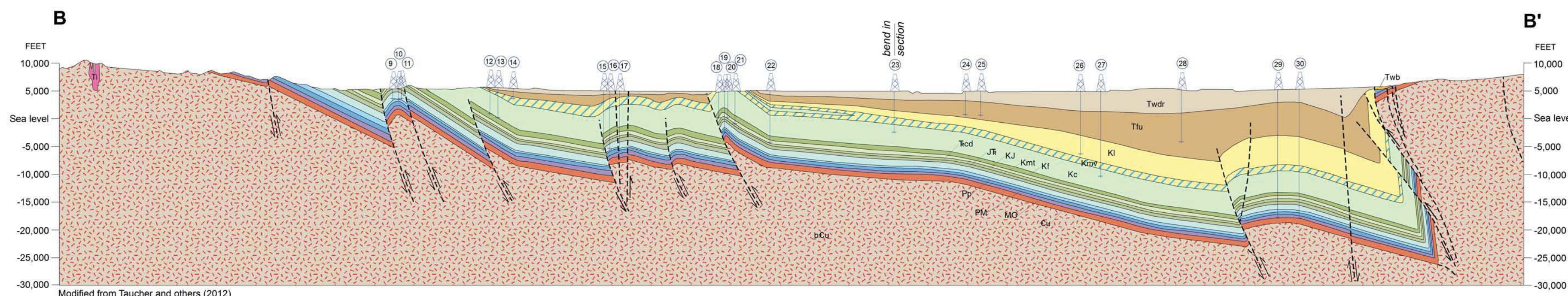
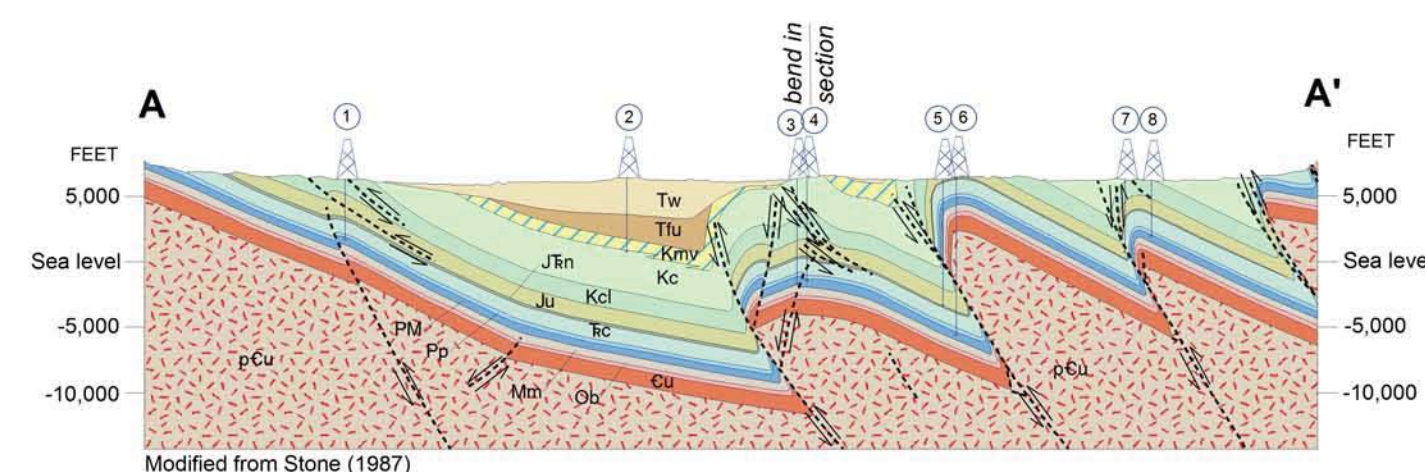


Geology - Interpreting the past - providing for the future

GEOLOGIC STORAGE ASSESSMENT OF CARBON DIOXIDE (CO₂) IN THE LARAMIDE BASINS OF WYOMING



EXPLANATION

CROSS SECTION SYMBOLS

Formation contact - Dashed where inferred
 Fault - Dashed where inferred; arrows indicate relative movement
 Drill hole - Well logs used to construct cross sections

CENOZOIC

- Tertiary**
- Ti Intrusive igneous rocks
 - Twb Wagon Bed Formation
 - Twdr Wind River Formation
 - Tw Wasatch Formation
 - Ttu Fort Union Formation

MESOZOIC

- Cretaceous**
- Kl Lance Formation
 - Kmv Mesaverde Formation
 - Kc Cody Shale
 - Kf Frontier Formation
 - Kmt Mowry Shale, Muddy Sandstone, and Thermopolis Shale
 - Kcl Coverly Formation

GEOLOGIC UNITS

Cretaceous and Jurassic

- KJ Coverly and Morrison Formations

Jurassic

- Ju Jurassic rocks, undifferentiated

Jurassic and Triassic

- JF Sundance and Gypsum Spring Formations, and Nugget Sandstone
- JIn Nugget Sandstone

Triassic

- Tc Chugwater Formation
- Tcd Chugwater and Dinwoody Formations

PALEOZOIC

Permian

- Pp Phosphoria Formation

Permian, Pennsylvanian, and Mississippian

- PM Tensleep Sandstone and Amsden Formation

Mississippian

- Mm Madison Limestone

Mississippian, Devonian, and Ordovician

- MO Mississippian, Devonian, and Ordovician rocks, undifferentiated

Ordovician

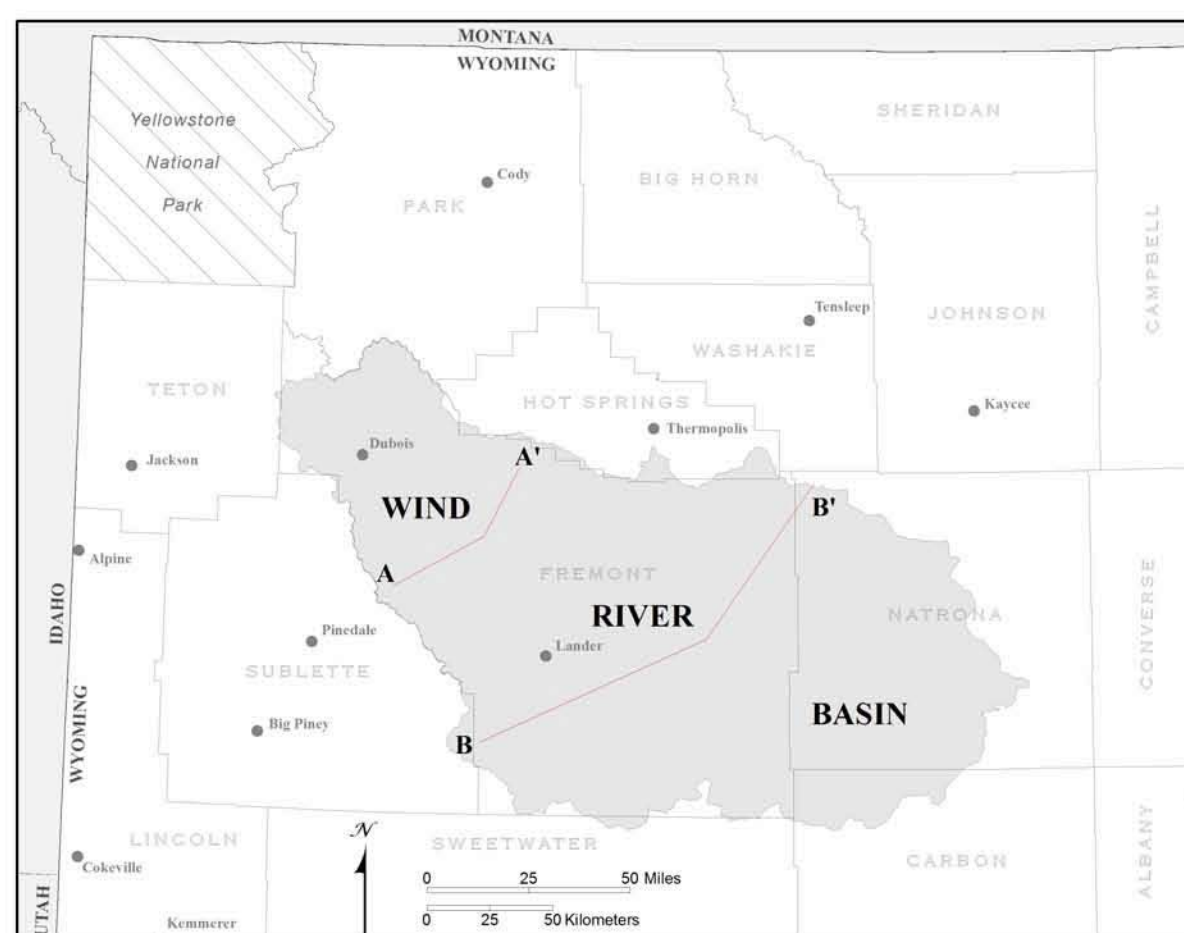
- Ob Bighorn Dolomite

Cambrian

- Cu Cambrian rocks, undifferentiated

PRECAMBRIAN

- pCu Precambrian rocks, undifferentiated



CROSS SECTION LOCATION MAP

WELL CONTROL ALONG CROSS SECTIONS

| Well no. | API no. | Operator | Well name | Bottom formation | Surface location | | | County | Spud year |
|----------|--------------|--|--------------------------|------------------|------------------|-----|-----|------------|-----------|
| | | | | | sec. | T. | R. | | |
| 1 | 49-013-20303 | Stoltz & Co. | Tribal 1-35 | Tensleep | 35 | 4N | 4W | Fremont | 1970 |
| 2 | 49-013-21236 | Gulf Energy Corporation | Crowheart Butte 1 1-35-1 | Cody | 35 | 5N | 3W | Fremont | 1982 |
| 3 | 49-013-20090 | Clinton Oil Company | Tribal Q 1 | Madison | 8 | 5N | 2W | Fremont | 1967 |
| 4 | 49-031-20054 | Turner Smith & Associates | Tribal R 8-1 | Madison | 8 | 5N | 2W | Fremont | 1968 |
| 5 | 49-013-21422 | American Beryllium Oil Corp. | AQP Tribal 36-33 | Chugwater | 36 | 6N | 2W | Fremont | 1984 |
| 6 | 49-013-21318 | American Beryllium Oil Corp. | Tribal 9-24 | Tensleep | 9 | 6N | 2W | Fremont | 1981 |
| 7 | 49-013-06740 | British American Oil | Tribal 1 | Chugwater | 4 | 6N | 2W | Fremont | 1954 |
| 8 | 49-013-06751 | British American Oil | Arapahoe 2 | Tensleep | 3 | 6N | 1W | Fremont | 1956 |
| 9 | 49-013-21383 | Hrubetz Oil Company | Dallas-Federal 1-19 | Tensleep | 19 | 32N | 98W | Wind River | 1983 |
| 10 | 49-013-06936 | Sunset International | Govt 29-4B | Tensleep | 29 | 32N | 98W | Wind River | 1966 |
| 11 | 49-013-05367 | Cabene Exploration | Govt 1 | Tensleep | 19 | 32N | 98W | Wind River | 1957 |
| 12 | 49-013-21915 | Sauer Bill Oil & Gas Company LLC | Sauer Ogle 1 | Frontier | 7 | 32N | 97W | Wind River | 1999 |
| 13 | 49-013-05490 | Conoco Inc. | Govt 29-4B | Morrison | 8 | 32N | 97W | Wind River | 1956 |
| 14 | 49-013-22204 | Phillips Petroleum Company | Corehole 2 | Mesaverde | 28 | 33N | 97W | Wind River | 2001 |
| 15 | 49-013-05623 | Devon Energy Production Company LP | Beaver Creek Unit 10 | Phosphoria | 16 | 33N | 96W | Wind River | 1948 |
| 16 | 49-013-05639 | Devon Energy Production Company LP | Beaver Creek Unit 55 | Tensleep | 16 | 33N | 96W | Wind River | 1958 |
| 17 | 49-013-05649 | Devon Energy Production Company LP | Beaver Creek Unit 40 | Cambrian | 10 | 33N | 96W | Wind River | 1955 |
| 18 | 49-013-20381 | Texaco Exploration & Prod. | Govt-P L Ackerman 1 | Skull Creek | 27 | 34N | 95W | Wind River | 1972 |
| 19 | 49-013-20334 | Legacy Reserves Operation LP | Alkali Butte Unit 8 | Madison | 26 | 34N | 95W | Wind River | 1971 |
| 20 | 49-013-20547 | Legacy Reserves Operation LP | Federal 1 | Thermopolis | 23 | 34N | 95W | Wind River | 1975 |
| 21 | 49-013-05903 | M K M Oil Company | Hagood 1 | Thermopolis | 23 | 34N | 95W | Wind River | 1959 |
| 22 | 49-013-20184 | Occidental | Govt-Campbell Ridge 1 | Morrison | 7 | 34N | 94W | Wind River | 1969 |
| 23 | 49-013-05997 | SWEPI LP | Conant Creek Unit 22-27 | Cody | 27 | 35N | 93W | Wind River | 1962 |
| 24 | 49-013-21347 | ANR Production Company | Conant Creek Unit 1-6 | Fort Union | 6 | 35N | 92W | Wind River | 1982 |
| 25 | 49-013-21454 | Amerada Hess Corporation | Federal 30-23 | Fort Union | 30 | 36N | 92W | Wind River | 1984 |
| 26 | 49-013-22427 | Encana Oil and Gas USA Inc. | Riverbank Unit 1 | Meeteetse | 31 | 37N | 91W | Wind River | 2004 |
| 27 | 49-013-20845 | Dome Petroleum Corporation | Moneta Unit 1-29 | Cody | 29 | 37N | 91W | Wind River | 1978 |
| 28 | 49-013-21820 | Noble Energy Inc. | State 44-36 | Fort Union | 36 | 38N | 91W | Wind River | 1997 |
| 29 | 49-013-21510 | Burlington Resources Oil & Gas Company L | Bighorn 2-3 | Gallatin | 3 | 38N | 90W | Wind River | 1991 |
| 30 | 49-013-22127 | Burlington Resources Oil & Gas Company L | Bighorn 8-35 | Madison | 35 | 39N | 90W | Wind River | 2001 |

NOTICE TO USERS OF INFORMATION FROM THE WYOMING STATE GEOLOGICAL SURVEY

The WSGS encourages the fair use of its material. We request that credit be expressly given to the "Wyoming State Geological Survey" when citing information from this publication. Please contact the WSGS at 307-766-2286, ext. 224, or by email at wsgs.sales@wyo.gov if you have questions about citing materials, preparing acknowledgments, or extensive use of this material. We appreciate your cooperation.

Individuals with disabilities who require an alternative form of this publication should contact the WSGS. For the TTY relay operator call 1-800-877-9975.

For more information about the WSGS or to order publications and maps, go to www.wsgs.uwyo.edu, call 307-766-2286, ext. 224, or email wsgs.sales@wyo.gov.

DISCLAIMERS

The Wyoming State Geological Survey (WSGS) and the State of Wyoming make no representation or warranty, expressed or implied, regarding the use, accuracy, or completeness of the data presented herein, or of a map printed from these data. The act of distribution shall not constitute such a warranty. The WSGS does not guarantee the digital data or any map printed from the data to be free of errors or inaccuracies.

The WSGS and the State of Wyoming disclaim any responsibility or liability for interpretations made from these digital data or from any map printed from these digital data, and for any decisions based on the digital data or printed maps. The WSGS and the State of Wyoming retain and do not waive sovereign immunity.

The use of or reference to trademarks, trade names, or other product or company names in this publication is for descriptive or informational purposes only, or is pursuant to licensing agreements between the WSGS or State of Wyoming and software or hardware developers/vendors, and does not imply endorsement of those products by the WSGS or the State of Wyoming.

REFERENCES

Stone, D.S., 1987, Rocky Mountain Transect-Wyoming, transect segments SW 3 and SW 2: Littleton, Co., DVD, version 2.0.

Taucher, P., Bartons, T.T., Clarey, K.E., Quillinan, S.A., Hallberg, L.L., Clark, M.L., Thompson, M., Gribb, N., Worman, B., and Gracias, T., 2012, in Copeland, D. ed., Available groundwater determination, Technical Memorandum, Wind/Bighorn River Basin water plan update, groundwater study, Level I (2008-2011): Prepared for the Wyoming Water Development Commission, by the Wyoming State Geological Survey, Laramie, Wy., [variously paged].

ACKNOWLEDGMENT

The Wyoming State Geological Survey thanks D.S. Stone for his permission to modify portions of the Rocky Mountain Transect, as shown in cross section A - A'.

Layout and design by Phyllis A. Ranz and Robert Kirkwood
 Edited by Suzanne C. Lühr

GEOLOGIC CROSS SECTIONS, WIND RIVER BASIN, WYOMING

Vertical exaggeration ~ 2x