

# Wyoming Rural Development Council



## Resource Team Report for the Washakie County Assessment

April 10-12,  
2007

*"The mission of the Wyoming Rural Development Council is to create partnerships that result in effective, efficient and timely efforts to enhance the viability of rural Wyoming"*





*Thanks to the residents of Washakie County for the warm reception and open, honest discussions,  
we greatly enjoyed the time spent in your County~Washakie County Resource Team*

Wyoming Rural Development Council  
214 West 15<sup>th</sup> Street  
Cheyenne, Wyoming 82002  
(307) 777-6430 ~phone  
[mrando@state.wy.us](mailto:mrando@state.wy.us) or [abrune@state.wy.us](mailto:abrune@state.wy.us) ~email  
Web: [www.wyomingrural.org](http://www.wyomingrural.org)



# Welcome from the Wyoming Rural Development Council!

## Wyoming Rural Development Council

The Wyoming Rural Development Council (WRDC) is a collaborative public/private partnership that brings together six partner groups: local/regional government, state government, federal government, tribal government, non-profit organizations and private sector individuals and organizations.

WRDC is governed by a Steering Committee representing the six partner groups. The Steering Committee as well as the Council membership has established the following goals for the WRDC:

- Assist rural communities in visioning and strategic planning.
- Serve as a resource for assisting communities in finding and obtaining grants for rural projects.
- Serve and be recognized as a neutral forum for identification and resolution of multi-jurisdictional issues.
- Promote, through education, the understanding of the needs, values,

The Council seeks to assist rural Wyoming communities with their needs and development efforts by matching the technical and financial resources of federal, state, and local governments and the private sector with local development efforts.



## Community Assessment Program

The Community Assessment Program in Wyoming began in the year 2000 and is designed to help communities develop locally conceived and driven development strategies.

The community assessment program helps communities and counties develop a “big picture” objective assessment of their challenges and opportunities, socially, economically and environmentally.

Today, the WRDC has facilitated community assessments in 78 Wyoming communities and two counties. In addition, the WRDC has created a network of over 375 trained team members that volunteer their time to Wyoming communities on these assessments.

Many Wyoming communities have used this report to begin a plan of action for their community, often with amazing success. To learn more about how communities have effectively used this process to create a plan and implement objectives and goals, take a look at the, Five Year Community Assessment Synopsis entitled, “Empowering Rural Communities to Build Their Own Future,” which is available on our website.

To learn more about the Wyoming Rural Development Council and our programs contact us!

## Wyoming Rural Development Council

2219 Carey Avenue  
Cheyenne, Wyoming 82001

Phone: (307)777-6430

Fax: (307)777-6593

Email: [mrando@state.wy.us](mailto:mrando@state.wy.us)

Web: [www.wyomingrural.org](http://www.wyomingrural.org)

[www.wyomingcommunitynetwork.com](http://www.wyomingcommunitynetwork.com)

## Table of Contents

The Washakie County Assessment Report is designed to help the county to develop a plan of action that is locally driven and conceived. The report includes the following topics:

Welcome from the WRDC	1
Report Development Process	3
Executive Summary	4
Washakie County Profile	5-16
Resource Team Member List	16-17
Washakie County Major Themes	18
Team Member Recommendations	
Listening Session Responses	
20 Clues to Rural Community Survival	



*Any recommendations contained herein are not mandatory. The Wyoming Rural Development Council has not endorsed any recommendations and opinions contained herein. Neither the WRDC, nor any of its employees, contract labor, committee chairs, and/or members makes any warranty, express or implied, including warranties of merchantability and fitness for a particular purpose, or assumes any legal liability for the accuracy, completeness, or usefulness of this report or any information, recommendations, or opinions contained herein.*

# Process for the Development of the Washakie County Report

## Process

The Wyoming Rural Development Council (WRDC) has provided a Resource Team to assist, Wyoming in evaluating the community's assets and liabilities and in developing suggestions for improving the environment, social and economic future of Washakie County.

Washakie County requested a community assessment from the Wyoming Rural Development Council. Mary Grace Strauch served as the community contact and took the lead in agenda development, logistics and publicity in town for the assessment. Resource team members were selected to visit, interview citizens, business and community leaders; and develop a plan of recommended action for the town. The team members were carefully selected based on their fields of expertise that Superior officials indicated would be needed to respond to the problem areas identified.

The Resource Team toured the county and interviewed approximately 203 people over a three-day period from April 10-12, 2007. The team interviewed representatives from the following segments of the county: Retail, Business, Banking, Finance; City, County, Law Enforcement, Officials; Healthcare; Utilities, Energy, Industry; Youth, Youth Programs, Education; Agriculture; State and Federal; Civic Clubs, Churches, Social Services; Senior Citizens and both communities of Ten Sleep and Worland.

Each participant was asked to respond to three questions designed to begin communication and discussion and to serve as a basis for developing the action plan. The three questions were:

- ❑ *What do you think are the major problems and challenges in Washakie County?*
- ❑ *What do you think are the major strengths and assets in Washakie County?*
- ❑ *What projects would you like to see completed in two, five ten and twenty years in Washakie County?*

Upon completion of the interviews, the team met to compare notes and share comments following the three days of intense study. The team then agreed that each team member would carefully analyze what was said, synthesize what they heard with their knowledge of programs and resources, prepare their notes and suggestions, and forward these items to be combined into WRDC's final report for Washakie County.

The oral report was presented to the people of Washakie County on April 12, 2007 and many of the citizens of Washakie County who participated in the interviews attended.

## Report Development

Upon completion of the interviews, the team met to compare notes and share comments following the two days of intense study. The team then agreed that each team member would carefully analyze what was said, synthesize what they heard with their knowledge of programs and resources, prepare their notes and suggestions, and forward these items to be combined into the Wyoming Rural Development Council's final report to the residents of Washakie County.

## Follow-up

Following the written report, the WRDC will return and facilitate a goal/priority setting meeting with the Washakie County.

## Executive Summary

The Resource Team for Washakie County would like to extend their thanks for the warm hospitality we received during our visit. It was wonderful to visit both Ten Sleep and Worland and talk to those who came to the different listening sessions; we learned a lot! It was fantastic to hear so many positives for living in Washakie County. The county officials were generous with their time and their dedication assisted with the entire process.

Many of the elements are here for Washakie County to have a successful future – the citizens we met with were enthusiastic about where they live, the strong sense of community and a beautiful area! To achieve the goals it will be important to involve the whole community in trying to find ways to accomplish the goals. With each success it will be like a snow ball going down the hill, the people interested and willing to help will grow. When everyone gets involved, it is not as overwhelming as when only a few are involved. A few celebrations at the successful conclusion of an activity which has involved a large number of citizens will lead to a feeling of accomplishment that will carry over into other activities. Tackle smaller jobs first, or break big jobs into phases; this allows for early successes and a sparks the momentum.

Each individual must decide what it is that they want to do, what kind of project they want to tackle. There are enough tasks for everyone. Each small step, every accomplishment, no matter how limited, is movement in the right direction toward achieving Washakie County's goals. It can be done! There is no problem facing Washakie County that cannot be solved by the people living in the county. It is your choice, your decision, you can do it.

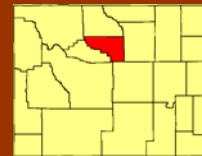
We hope you will find great value in this report and remember any team member is available for you to call to clarify information or provide more information and assistance.

Sincerely,

*Kim Porter, Resource Team Leader*

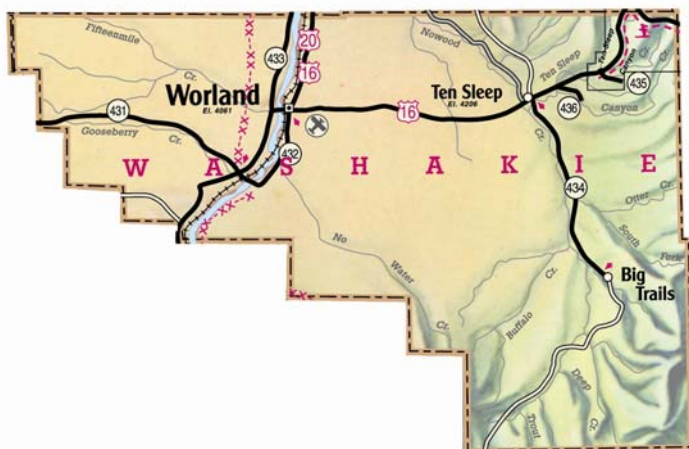
# Washakie County, Wyoming

## County Profile



**2005 Population: 7,933**  
**Land Area: 2,240 sq. mi.**  
**Persons per sq. mi.: 3.44**  
**County Seat: Worland**  
**(pop. 4,967)**

Source: <http://easiv.state.wy.us/pop/SUB-04EST.htm>, July 2005

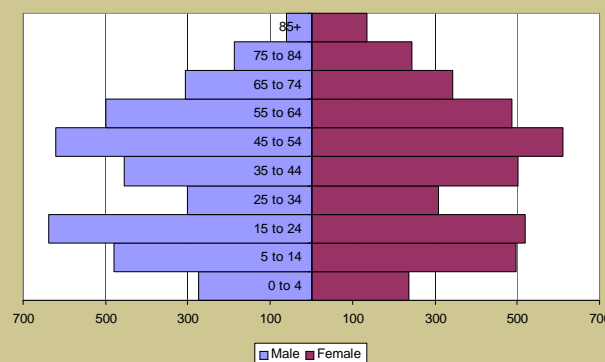


### Population Distribution

Age	2005 estimate	2010 projected
<19	2,124	1,934
20-34	1,125	1,318
35-54	2,188	1,674
55-74	1,639	1,685
75+	627	567
Median Age	41.8	40.9

Source: Decision Data Resources & Applied Geographic Solutions

### 2005 Distribution by Age by Sex



### Cost of Living Index

<b>Overall</b>	<b>94</b>
Food	97
Housing	72
Apparel	108
Transportation	101
Medical	102
Recreation & Personal Care	107

Source: State of Wyoming Economic Analysis Division  
<http://easiv.state.wy/wcli/NewRelease.Q05.pdf>  
 Prices as of January 4, 5, 6, 2006

### Employment by Industry

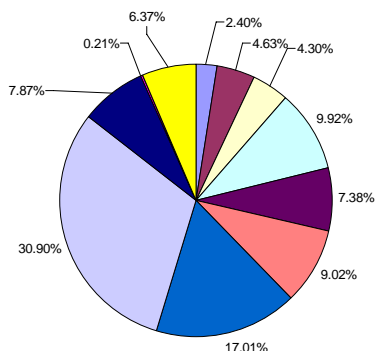
Agriculture, Forestry & Fishing	102	2.4%
Construction	197	4.6%
Finance, Insurance & Real Estate	183	4.3%
Manufacturing	422	9.9%
Mining	314	7.4%
Public Administration	384	9.0%
Retail Trade	724	17.0%
Services	1,315	30.9%
Transportation & Communication	335	7.9%
Unclassified	9	0.2%
Wholesale Trade	271	6.4%
<b>Total Employment</b>	<b>4,256</b>	<b>100.00%</b>

Source: Decision Data Resources & Applied Geographic Solutions. 2005

### Household Income

	2005 estimate	2010 projected
Average Household Income	\$47,237	\$52,667
Average Price of Single-Family Home (2004)		\$102,144

Source: A Profile of Wyoming Demographics, Economics and Housing – December 31, 2005 ([www.wyomingcda.com](http://www.wyomingcda.com))

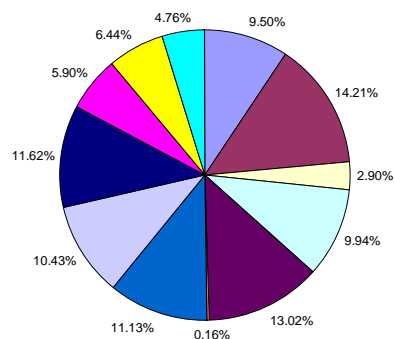


## Employment by Occupation

Executive, Administrative & Mgmt	367	9.50%
Professional	549	14.21%
Technician & Related Support	112	2.90%
Sales	384	9.94%
Administrative Support	503	13.02%
Private Household	6	0.16%
Service	430	11.13%
Farming, Forestry & Fishing	403	10.43%
Precision Service	449	11.62%
Machine operator	228	5.90%
Transportation & Material Moving	249	6.44%
Laborer	184	4.76%

**Total employment** 3,864 100.00%

Source: [www.bizSitesDATA.com](http://www.bizSitesDATA.com), 2002



## Unemployment

Labor Force	4,444
Employed	4,267
Unemployed	186
<b>Unemployment Rate</b>	<b>4.0%</b>

Source: <http://doe.state.wy.us/LMI> (May 2006)

## Median Salaries

### Unskilled

Crater/Packer II	\$19,760
Light Assembler II	\$20,078
Material Handler II	\$21,110
Packer/Packager, Hand	\$17,224

### Semi-Skilled

Crushing, Grinding, and Mixing Machine Operation	\$19,644
Heavy Assembler II	\$25,097
Machine Tool Cutting Operator/Tender	\$21,110
Punch Press Operator	\$23,502

### Skilled

Assembly Supervisor	\$44,513
---------------------	----------

Machinist II	\$31,019
Intermediate Tool & Die Maker	\$35,662
Welder II	\$29,396
<b>Technical</b>	
Electric/Electronics Technician II	\$31,866
Electrician I	\$28,395
PC Maintenance Technician II	\$37,223
Telecommunications Technician II	\$38,216
<b>Information Technology</b>	
Database Administrator	\$62,348
Mainframe Programmer II	\$44,797
Programmer I	\$37,495
Webmaster	\$49,344
<b>Clerical</b>	
Account Representative	\$20,877
Customer Service Representative II	\$26,431
Receptionist	\$19,884
Telemarketer	\$22,169
<b>Professional</b>	
Employment Manager	\$60,449
Materials Manager	\$58,852
Payroll Administrator	\$34,523
Production Control Manager	\$57,031

Source: [www.salary.com](http://www.salary.com)

<b>Major Employers</b>			
	<b>Company</b>	<b>Employees</b>	<b>Product/Service</b>
1.	Washakie Co. School Dist. 1	278	Education
2.	Washakie Medical Center	137	Health Care
3.	Schlumberger Technology	102	Oilfield Services
4.	Crown Cork & Seal	89	Mftr., Aluminum Cans
5.	Fremont Beverage, Inc	73	Bottling Facility
6.	Bureau of Land Management	64	Government Services
7.	McGarvin Moberly Const.	35	Asphalt Contractor
8.	Wyoming Sugar Co, LLC	60	Sugar Processor
9.	Washakie County	56	Government Services
10.	RT Communications, Inc	53	Telephone Services
11.	City of Worland	50	Government Services
12.	MBA	28	Insurance Services
13.	Wyoming Gas	24	Natural Gas Dist.
14.	NOWCAP (Northwest Community Action Programs)	20	Non-Profit Employment Services

Source: Washakie Development Association

<b>Education</b>	
<b>Washakie County School District Enrollment (2005)</b>	<b>1,401</b>

<b>Average Student Teacher Ratio (2004)</b>	<b>12.74:1</b>
<b>Graduation Rate (2004)</b>	<b>78.049%</b>
<b>Expenditures per Average Daily Membership (2004)</b>	<b>\$8,405</b>

Source: Wyoming Department of Education

<b>Higher Education Facilities (2005)</b>	
<b>Facility</b>	<b>Enrollment</b>
Northwest College – Campuses in Powell, Cody and Worland ( <a href="http://www.northwestcollege.edu">www.northwestcollege.edu</a> )	1,754
University of Wyoming – Laramie, WY ( <a href="http://www.uwyo.edu">www.uwyo.edu</a> )	9,811

Source: Wyoming Community College Commission, University of Wyoming

<b>Telecommunications</b>	
<b>RT Communications</b> 130 South Ninth Street Worland, WY 82401 Phone: (307) 347-7000 Fax: (307) 347-6366 Website: <a href="http://www.rtcom.net">www.rtcom.net</a> <i>Services offered:</i> (Worland only)	<b>TRI County Telephone</b> P. O. Box 310 Basin, WY 82410 Phone: (307) 568-2427 Fax: (307) 235-2618 Website: <a href="http://www.tctwest.net">www.tctwest.net</a> <i>Services offered:</i> (Ten Sleep only) DSL, ISDN-BRI, T-1, Web Hosting
<b>Visionary</b> P.O. Box 2799 Gillette, WY 82717 Phone: (888) 682-1884 Fax: (307) 682-2519 Website: <a href="http://www.vcn.com">www.vcn.com</a> (All other incorporated communities): Web Hosting.	

Source: Wyoming Interactive Business Center, Wyoming Business Council

<b>Power Cost</b>			
<b>Weighted Average Cost per KWh of Power</b>	<b>2001</b>		
Cents per kWh of industrial power	3.24		
Cents per kWh of commercial power	5.19		
Cents per kWh of residential power	6.51		
	<b>Industrial</b>	<b>Commercial</b>	<b>Residential</b>
<b>High Plains Power, Inc. (2001)</b>			
203 North 1 <sup>st</sup> Dubois, WY 82513 (307) 455-2473	3.54	6.19	7.21
<b>Rocky Mountain Power (2001)</b>	3.24	5.14	6.44

825 NE Multnomah  
Portland, OR 97232  
(888) 221-7070

Source: ACN (U. S. Department of Energy, Energy Information Administration)

## Transportation

### Airports

#### **Worland Municipal (WRL)**

3 miles south of Worland

Commercial Service: Great Lakes (United Express)

Daily Flights to: Denver, Laramie

Runway: 7,004 x 100 ft., asphalt

Fixed Base Operators: Sky Aviation

### Highways

Distance from Worland to nearest Interstate highway (I-25) = 90 miles

U. S. Highway 16

### Railroad

Burlington Northern Santa Fe

## Workforce Training

- Wyoming Department of Workforce Services offers employers up to \$4,000 per employee for training. <http://wyomingworkforce.org/how/wdftp.aspx>
- Quick Start  
Wyoming is the first state approved to license the State of Georgia's Quick Start program. The Wyoming Business Council and the Wyoming Community Colleges are partnering to provide training in:
  - Customer Service
  - Manufacturing
  - Warehousing and Distribution<http://www.wyomingbusiness.org>

## State Incentives

- No corporate state income tax.
- No personal state income tax.
- Community Development Block Grants administered by Wyoming Business Council. ([www.wyomingbusiness.org](http://www.wyomingbusiness.org))
  - Provides grants to local governments for community and economic development projects.
  - Provides convertible loans to grants based on job creation.
- Partnership Challenge Loan Program administered by Wyoming Business Council.
  - Provides low interest loans to community development organizations.
  - Provides gap financing for projects with the Wyoming Business Council

participating with a commercial lender.

- Industrial Development Revenue Bonds. Cities and counties may issue tax-exempt bonds to provide financing for manufacturing.

## Taxes

- No corporate state income tax.
- No personal state income tax.
- No inventory tax.
- Washakie County has 5% sales and use tax (4% state base tax and a 1% specific purpose county tax.)

*Source: Wyoming Department of Revenue, Excise Division (April 2006)*

- Unemployment Insurance – taxable base rate of \$17,100. Tax rates by industry grouping – WY Dept. of Employment.  
(<http://wydoe.state.wy.us/doe.asp?ID=831>)
- Workers' Compensation– rates vary by occupation and can be found at  
<http://wydoe.state.wy.us/doe.asp?ID=803>
- Property taxes. Average tax rate in Washakie County is 7.1817%  
*Source: Wyoming Department of Revenue, Ad Valorem Division (September 2004)*

### **Tax computation:**

Fair Market Value of Property \* Level of Assessment (9.5% for Residential and Commercial Property) \* Tax Rate

**Example:** Tax on a commercial facility valued at \$1,000,000 is as follows:

$$\text{\$1,000,000} \times 0.095 = \text{\$95,000} \times 0.071817 = \text{\$6823}$$

State assesses agricultural lands at 9.5% of agricultural value, residential and commercial at 9.5% and Industrial at 11.5% of fair market value.

## Washakie County Assessment Listening Session Responses

What are the major strengths and assets in Washakie County?

What are the major problems and challenges in Washakie County?

What projects would you like to see accomplished in Washakie County in the next 2, 5, 10 and 20 years?

# **THE WYOMING RURAL DEVELOPMENT COUNCIL**

## **EXECUTIVE SUMMARY**

### **Superior Resource Team Members April 10-12, 2007**

#### **Team Leader**

**Kim Porter**, Leadership & Development  
Program Manager  
Agribusiness Division,  
Wyoming Business Council  
214 W. 15th Street  
Cheyenne, WY 82002  
307-777-6319  
[kim.porter@wybusiness.org](mailto:kim.porter@wybusiness.org)

**Community Contact:**  
**Mary Grace Strauch**  
**307-347-3131**

#### **Shauna Gibbs**

Shauna Gibbs, Rural Housing Programs  
Specialist  
USDA/Rural Development Wyoming  
State Office  
P.O. 11005, Casper, WY 82602  
Phone: (307) 233-6722  
Fax: (307) 233-6739  
[shauna.gibbs@wy.usda.gov](mailto:shauna.gibbs@wy.usda.gov)

#### **Linda Harp**

LPH Consulting  
Box 891  
Basin, WY 82401  
Phone: 307-272-0998  
[lph00@tctwest.net](mailto:lph00@tctwest.net)

# Washakie County Assessment Agenda

**April 10-12, 2007**

Listening Sessions focused on groups, but anyone can come to any session

## *Resource Team Activities*

<b><u>Tuesday, April 10</u></b>	<b><u>Activity</u></b>	<b><u>Location</u></b>
10:30 a.m. to 11:30 a.m. (Team Members Only)	Orientation and Organization	Community Center. Meeting
11:30 a.m. to 1:30 p.m.	Lunch with Community Resource Team Planners	
1:30 p.m.	Resource Team leaves for area tour	
5:3 p.m. to 6:45 p.	Resource Team working supper	
7:00 p.m. to ?	Ten Sleep Public Input	Ten Sleep Sr. Center

<b><u>Wednesday, April 11</u></b>	<b><u>Listening Session Group</u></b>	<b><u>Location</u></b>
8:00 a.m. to 9:05	Retail, Business, Banking, Finance	Community Center
9:20 a.m. to 10:15 a.m.	City, County, Law Enforcement, Officials	Community Center
10:20 a.m. to 11:25 a.m.	Healthcare	Community Center
11:30 a.m. to 12:50 p.m.	Lunch	
1:00 p.m. to 2:05 p.m.	Review of Listening Sessions	
2:10 p.m. to 3:15 p.m.	Utilities, Energy Industry	Community Center
3:20 p.m. to 4:25 pm.	Youth, Youth Programs, Education	High Schools Commons
4:30 p.m. to 6:00 p.m.	Dinner	
6:00 p.m. to 6:55 p.m.	Agriculture	Community Center
7:00 p.m. to ?	Worland Public Input	Community Center

<b><u>Thursday, April 12</u></b>	<b><u>Listening Session Group</u></b>	<b><u>Location</u></b>
8:00 a.m. to 9:05a.m.	State and Federal	Community Center
9:10 a.m. to 10:14 a.m.	Civic Clubs, Churches, Social Services	Community Center
10:20 a.m. to 11:25 a.m.	Senior Citizens	Community Center
11:30 a.m. to 1:00 p.m.	lunch	
1:00 p.m. to 4:30 p.m.	Team prepares for County Meeting	Community Center
5:00 p.m. to 6:30 p.m.	Team working dinner	Community Center
7:00 p.m. to ?	Resource Team County Meeting	Community Center

## RESOURCE TEAM MEMBER REPORTS

**Kim Porter**  
**Wyoming Business Council**  
**214 W. 15<sup>th</sup> Street**  
**Cheyenne, WY 82002**  
**307.777.6319**  
[kim.porter@wybusiness.org](mailto:kim.porter@wybusiness.org)

**Introduction:** I would like to start off by thanking everyone for their hospitality. We had great listening sessions and fabulous food! I quite enjoyed the tour of the county, it is a beautiful area!

Washakie County has many things going for it, for example the medical services. For a county population of around 8,500 your medical services are awesome! Your county officials are very dedicated to improving Washakie County and listening to what the citizens want.

You face the same challenges many towns and counties are facing in Wyoming – challenges with workforce and housing shortages to name a few. There were concerns about Mineral Royalty distribution, which I'm sure other non-energy counties have the same concerns. The lack of funding is a more universal problem then it may seem.

As you read this report, I would encourage you to take a look at the Ten Sleep Community Assessment and the Worland Community Assessment again. There were many issues back then that came up in this assessment. This reinforces that the issues are important and finding a solution needs to happen. Washakie County has the reports and now the people need to work together to find the solution. It came up as a theme that “we need to start what we finish”. I couldn't agree more! Pick a project and complete it before moving on to another. This is not to say you can't be working on several projects, but make sure you complete the projects you start.

**Theme:**       **COMMUNICATION**

**Challenge:**   It came out in our session that there is a lack of communication between governmental entities, the two communities and then to the public. This is one item that was a major theme in both the Worland Community Assessment and the Ten Sleep Community Assessment. Some of the suggestions in the Worland Assessment are still valuable and you may want to revisit that report.

**Solution:**     First, everyone involved needs to recognize that this is a problem and has been for quite a while. It is something the citizens of Washakie County want to be better and this may be the easiest, least costly problem to solve. It takes commitment. Different government entities need to recognize their constituents want this and make an effort to get it done. It could be started in several ways. Special district representatives may want to attend county commission meetings along with city council members, or at the very least a representative of one entity should attend the other entities meetings. The county commissioners could attend city council meetings or at least have a representative at them. City Council members and County

Commissioners could attend special district meetings or at least send a representative that could report back. Or maybe you may want to try a monthly meeting, alternating between Ten Sleep and Worland every month in which all government entities attend to keep everyone up to date on what's going on and way you can help each other.

To further enhance communications, visit with owner/manager of the Worland newspaper. See if they would be willing to include a monthly/weekly "community" section where meetings could be listed so people know when and where meetings are held. A tentative agenda included would be a good way to give the why. If Worland has a "community event" channel on the television, it is another good way to get the word out. Most radio stations do community events at no cost, one more way to get the word out.

The Communication Department at Northwest College does have resources and can provide workshops and information getting a plan for communication. Mary Randolph of the Wyoming Rural Development Council is another person who may have contacts

**Resources:**

Northwest College

Communication Division

Bob Becker – Professor of Communication (will be on sabbatical after July)

307-754-6047

Or

Duane Fish – Professor of Speech Communication & Chairperson of Communication Division

307-754-6024 or 307-254-0297

Wyoming Rural Development Council

Mary Randolph

2219 Carey Avenue

Cheyenne, WY 82002

307-777-6430

mrando@state.wy.us

**Theme: WATER**

**Challenge:** There were concerns about the water supply, especially the aquifer water supplies that Admiral Beverage Company uses and the two towns use for drinking water.

**Solution:** Good news!!! The Madison formation is a large formation and in your area is free flowing and is one of the biggest in the western U.S. The drought is affecting this somewhat, as well as affecting the ground water. I talked to the Ground Water Division of the State Engineers office and the Water Development Commission and got a ton of information, however repeating it is a challenge because this is not my forte. What I can somewhat intelligently repeat is the State Engineer's office has a permitting protocol and one of the things they watch for is use and they work to ensure there is not overuse. If lack of water becomes a worry, they may not grant as many permits. The Water Development Commission is actively

searching for water and they have a project now in Big Horn County that will affect Hot Springs County, Washakie County and Big Horn County and provide a supplemental source of water. I have listed contact information for these offices. I'm sure Admiral Beverage Company has this information but for those inquiring minds, bottle water regulations can be found at <http://www.cfsan.fda.gov/~lrd/bot-h2o.html>.

**Resources:**

State Engineer's Office  
Ground Water Division  
307-777-6163

Water Development Commission  
307-777-7626

There are several people you can visit with in each office, so names are given.

**Challenge:** There were concerns that the West End Irrigation project has not been completed.

**Solution:** This is a long term project with the BLM and it sounds like it is tied up in federal government red tape. Current Status – a Draft Environmental Impact Statement is in an internal review in Cheyenne and Washington, D.C., and this is where it is held up. With all the oil and gas issues, the West End Irrigation has taken a back seat. Don Ogaard, with the BLM in Worland is working on this to get it through and is getting feedback that this will be moving forward soon. He feels confident that process will be complete no later than the end of this year and that this current stage is the hardest portion of the project.

**Resources:**

Don Ogaard, BLM  
307-347-5100

**Theme:** ENVIRONMENTAL

**Challenge:** There were people who were interested in a recycling program.

**Solution:** There is a document on the internet produced by the business council that can be found at <http://www.wyomingbusiness.org/pdf/energy/rd06internet.pdf>. This may be a good resource to find out how other cities are doing this – how they funded it, logistics, etc. Worland does have resources for recycling that can be found in this document. This document has city contacts, recycling contacts, public interest contacts – just about everything you'll need to find out more information. Cheyenne has a good recycling program and that may be a place to start.

**Resources:**

Listed in document above.



**Shauna Gibbs**

Shauna Gibbs, Rural Housing Programs Specialist

USDA/Rural Development

P.O. 11005, Casper, WY 82602

Phone: (307) 233-6722

Fax: (307) 233-6739

[shauna.gibbs@wy.usda.gov](mailto:shauna.gibbs@wy.usda.gov)

**Introduction:**

Returning to the Big Horn Basin and Washakie County, specifically, was a great experience for me! I have personal and professional ties to the community, and I enjoyed the opportunity to listen to residents from Ten Sleep and Worland about what they feel is important to the sustainability of their county.

The Resource Team was treated to a tour of the county, where we saw first hand the geologic formations and mountain vistas that draw tourists to the area each year. We saw farmers preparing their land for spring planting and learned about the water and irrigation projects being developed. We visited a ranch in Ten Sleep, witnessed the industrial development in Worland, and ate at a different place for every meal. Thanks to Lee Ann Baker and the Washakie County Commissioners we had a guided tour (with notes) on 70 points of interest throughout the county.

During every listening session “the people” were listed as an asset, and I would agree wholeheartedly! The County Commissioners showed their commitment to their constituents by extending the invitation for the assessment and by attending all of the listening sessions. Lee Ann Baker demonstrated her commitment to the county and economic development by also attending all the listening sessions and by doing much of the planning and preparation. And, of course, the process would not have been possible without the participating of the Washakie County citizens, who are about their community.

**Theme:**       **INFRASTRUCTURE**

**Challenges:**   Adequate drinking water, sewer, streets, county roads.

**Solution:**       Both loan and grant funds are available to rural communities through USDA/Rural Development, with priority given to public entities in areas with less than 5,500 people. Funds can be used to restore deteriorating water supply, or improve, enlarge or modify a water facility or an inadequate waste facility. Preference is given to requests which involve the merging of small facilities and those serving low-income communities. Because of the very high cost, USDA/Rural Development partners with the State of Wyoming to fund projects and to reduce water and waste disposal costs to a reasonable level for facilities serving the most financially needy communities/users of a system. Both Big Horn Regional and Washakie Rural have used state and federal dollars to fund water projects. Other infrastructure needs such as emergency vehicles, streets, telecommunications can also be funded through a variety of USDA/Rural Development programs designed to help rural communities.

**Resources:**

USDA/Rural Development (Water, waste, facilities loans and grants)

[www.rurdev.gov](http://www.rurdev.gov)

Alana Cannon, Program Director

P.O. Box 11005

Casper, WY 82602

Phone: (307) 233-6709

[alana.cannon@wy.usda.gov](mailto:alana.cannon@wy.usda.gov)

Wyoming Water Development Commission (WWDC)

[www.wwdc.state.wy.us/](http://www.wwdc.state.wy.us/)

Michael, K. Purcell, Director

6920 Yellowtail Road

Cheyenne, WY 82002

Ph. (307) 777-7626

Fax (307) 777-6819

Midwest Assistance Program (Technical Assistance)

[www.map-inc.org](http://www.map-inc.org)

Dan Coughlin

P.O. Box 1350

Casper, WY 82601

Phone: (307) 265-0855

[danmap@qwest.net](mailto:danmap@qwest.net)

Office of State Lands and Investments

<http://slf-web.state.wy.us/>

Herschler Building, 3<sup>rd</sup> Floor West

122 West 25<sup>th</sup> Street

Cheyenne, WY 82002

(307) 777-7331

[slfmail@state.wy.us](mailto:slfmail@state.wy.us)

Wyoming Business Council

[www.wyomingbusiness.org](http://www.wyomingbusiness.org)

214 West 15th St.

Cheyenne, WY 82002-0240

307-777-2800 or 800-262-3425

[info@wyomingbusiness.org](mailto:info@wyomingbusiness.org)

**Theme:        FACILITIES**

**Challenge:**    Indoor community pool, new library, new museum, new senior center, community center.

**Solution:**      Washakie County citizens identified the above facilities as desirable for their county. Each of these has the potential of being a multi-million dollar project. Funding all of these structures is likely to require partnerships with lenders, county, city, state, and federal entities and it may require higher property and sales taxes plus a bond issue. Please keep in mind that once these buildings are in place, you must have the financial means to operate and maintain them. There are some incentives and funds available for building environmentally sound, energy efficient buildings that can save on operating costs in the future.

There are grants and loans available through USDA/Rural Development and the State of Wyoming and you may want to consider hiring a professional grant writer to sort through the grant opportunities and complete the paperwork. In addition, please consider becoming a Wyoming Community Foundation Affiliate to tap into the local wealth and philanthropic spirit of Washakie County residents. There are also large numbers of people who can give only a small amount, but collectively it adds up quickly. A Community Foundation also has the benefit of having the citizenry working together for common goals and can create a sense of community pride.

**Resources:**

Wyoming Community Foundation

[www.wycf.org/](http://www.wycf.org/)

313 S. 2<sup>nd</sup> Street

Laramie, WY 82070

1-866-70-T-R-U-S-T

Phone: (307) 721-8300

Email: [wcf@wycf.org](mailto:wcf@wycf.org)

Wyoming State Library

[www-wsl.state.wy.us](http://www-wsl.state.wy.us)

Ms. Lesley Boughton, State Librarian

516 South Greeley Highway

Cheyenne, WY 82002

Phone: (307) 777-5911

Email: [lbough@state.wy.us](mailto:lbough@state.wy.us)

USDA/Rural Development

[www.rurdev.gov](http://www.rurdev.gov)

208 Shiloh Road

Worland, WY 82401

(307) 347-2456, Ext. 4

[lisa.bower@wy.usda.gov](mailto:lisa.bower@wy.usda.gov)

Office of State Lands and Investments

<http://slf-web.state.wy.us/>

Herschler Building, 3<sup>rd</sup> Floor West

122 West 25<sup>th</sup> Street

Cheyenne, WY 82002

(307) 777-7331

[slfmail@state.wy.us](mailto:slfmail@state.wy.us)

[www.foundationcenter.org](http://www.foundationcenter.org)

[www.kresge.org](http://www.kresge.org)

[www.ims.gov/](http://www.ims.gov/) (Institute of Museum & Library Services)

[www.fedmone.org](http://www.fedmone.org)

[www.wyhs.org](http://www.wyhs.org) (Wyoming Historical Society)

**Theme: HOUSING**

**Challenge:** Planning for and obtaining affordable housing for workforce, seniors and assisted living.

**Solution:** As in previous assessments completed for Worland (2000) and Ten Sleep (2001), housing issues remain a top concern for Washakie County citizens. There are some creative solutions available, but there are no quick fixes. Some Wyoming communities have formed successful non-profit housing authorities to focus on the issues, set priorities, and research funding opportunities. Non-profits can often qualify for federal and state grants not available to an individual or business. A housing assessment may also be a wise investment. It would help the county focus on addressing the greatest need and plan for the future.

Shared equity homeownership and land trusts have become popular ways of dealing with the lack of affordable housing. Shared equity homeownership ensures that the homes remain affordable to lower income households on a long-term basis by restricting the appreciation that the owner can retain, preserving affordable housing in areas where rising prices are forcing lower income households out of the market.

**Resources:**

In your search for affordable housing for families and seniors, don't overlook local developers, housing authorities, federal and state agencies.

Wyoming Community Development Authority

[www.wyomingcda.com](http://www.wyomingcda.com)

Cheryl Gillum

P.O. Box 634

Casper, WY 82602

Phone: (307)265-0603  
Email: [info@wyomingcda.com](mailto:info@wyomingcda.com)

USDA/Rural Development  
[www.rurdev.gov](http://www.rurdev.gov)  
USDA/Rural Development Local Office  
USDA Service Center  
208 Shiloh Road  
Worland, WY 82401  
Phone: (307) 347-2456, Ext. 4  
Email: [lisa.bower@wy.usda.gov](mailto:lisa.bower@wy.usda.gov)

Wyoming National Association of Housing Redevelopment Officials  
[www.wyo-nahro.org](http://www.wyo-nahro.org)  
Lisa Skiles Parady, Acting President  
Rock Springs Housing Authority  
Phone: (307) 352-1471

[www.housingtrustjh.org](http://www.housingtrustjh.org) (Jackson Hole Community Housing Trust)  
[www.bclt.net](http://www.bclt.net); (Burlington, VT Community Land Trust)  
[www.fanniemae.com](http://www.fanniemae.com) (Fanniemae)  
[www.hud.gov](http://www.hud.gov) (Housing and Urban Development)  
[www.wyominghousingnetwork.org](http://www.wyominghousingnetwork.org) (Wyoming Housing Network)  
[www.nw.org](http://www.nw.org) (NeighborWorks America)  
[www.rcac.org](http://www.rcac.org) (Rural Community Assistance Corporation)  
[www.nhi.org](http://www.nhi.org) (National Housing Institute)

**Linda Harp**  
LPH Consulting  
Box 891  
Basin, WY 82401  
Phone: 307-272-0998  
[lph00@tctwest.net](mailto:lph00@tctwest.net)

**Introduction:** Thank you, Washakie County residents, for your wonderful hospitality and the opportunity to visit your county. It was very evident that the county commissioners, Leann Baker, the Washakie Economic Development Director and other committee members took extra steps to make this assessment a success prior to our arrival.

I was impressed by the genuine concerns of participants attending the listening sessions and your honest comments. I enjoyed the opportunity to meet new people and see some familiar faces. You are all very fortunate to live in the communities in Washakie County and its outlying areas. In addition to your diverse business climate, you are surrounded by nature's beauty and outstanding recreational opportunities.

**Theme:**        **BIKE/WALKING TRAIL**

**Challenge:**    We had several citizens' talk about the need for trails and bike/walking paths in the county.

**Solution:**      Green River has built an extensive system of trails and paths utilizing TEAL Funds from the Wyoming Department of Transportation. The grants are 80/20 grants, requiring a 20% cash match. Green River's paths are for pedestrian, equestrians, and bikers/hikers and get extensive use. WYDOT sends information to towns and counties announcing each funding cycle. WYDOT also has funding for Bike/Walking paths through the Safe Routes to School (SRTS) grant program.

**Resources:**  
Parks and Recreation Department  
City of Green River  
307-872-6151

Dave Young  
Wyoming Department of Transportation  
5300 Bishop Blvd.  
Cheyenne, WY 82009  
Phone: 1-307-777-4384

Sara Janes  
Safe Routes to School Program  
WYDOT Planning

5300 Bishop Blvd  
Cheyenne, Wyoming 82009-3340  
307-777-4384

Recreational Trail Fund Grant through the Wyoming State and Cultural Resources division. Eligible programs include maintenance and restoration of existing trails and construction of new trails, along with others. Typical grants are in the range of \$2,500--\$75,000. As with the TEAL funds, there is a 20% match requirement. To examine this program further, please contact:

Grants Program Specialist  
State Parks and Historic Sites  
122 W. 25<sup>th</sup> Street  
Cheyenne, WY 82002  
Phone: 1-307-777-3483

State Land and Conservation Program offers reimbursable grants to acquire and or develop public outdoor recreational lands and facilities. Contact

Todd Tibbodeau  
122 W. 25<sup>th</sup> St  
Herschler Building  
Cheyenne, WY 82002  
307-777-6478

**Theme:       MEDICAL**

**Challenge:**   Healthcare services in Worland and Ten Sleep for older citizen's mirrors health care concerns across the state. Hospital Expansion and the ability to recruit and retain doctors and specialist is a statewide issue.

**Solutions:**   The county has adopted the Washakie County Comprehensive Plan, which outlines the goals and objectives for the county as they relate to the healthcare concerns residents. The comprehensive report will be vital as the county moves forward in planning and implementing strategies to address health care issues in Washakie County.

The Mineral Royalty Grant program has undergone significant rule changes but it continues to be a primary source for funding hospital expansion. Contact the program manager to fully understand the rule changes

**Resources:**

Robert Tompkins  
State Lands and Investment Broad  
Herschler Building  
Cheyenne, Wyoming 82002  
307-777-6646

USDA Rural Development Community Facilities Program  
100 East B. Street  
Casper, Wyoming  
307-233-6719

Community Development Block Grant Program  
Administered by the Wyoming Business Council  
Contact:

Leah Bruscino  
Northwest Regional Director  
143 S. Bent  
Powell, Wyoming 82435  
307-754-5785

The Wyoming Business Council has subscribed to Grant Station, which is a database containing over 5,000 funding sources.  
Contact

[Jacalyn Neely](#), Senior Research Specialist  
307-777-2806

### **Additional Resources**

Wyoming Community Foundation  
313 S. 2nd Street  
Laramie, WY 82070  
Phone: (307) 721-8300  
Fax: (307) 721-8333  
Email: wcf@wycf.org

Department of Health and Human Services, 5600 Fishers Lane, Room 11A-16. Health Services Branch: 301-443-2385; Research and Training Branch: 301-443-3099; Government and Special Focus Branch: 301-443-3288.

Web Site Address

[www.hrsa.gov](http://www.hrsa.gov)

93.912 Rural Health Care Services Outreach and HealthCare Network Development  
93.224, Consolidated Health Centers (Community Health Centers)

### **EXAMPLES OF FUNDED PROJECTS**

Funded projects include efforts to provide primary care services in rural areas, including mental health services, emergency medical services, prenatal care, free clinical services, and preventive health services. In addition, projects designed to increase the number of health professionals available to provide services in rural areas have also been funded. These include upgrading nursing skills from R.N. to N.P. or C.N.S. levels or upgrading the skills of emergency medical services personnel. In addition, projects designed to improve access to rural health services (such as transportation or services on mobile vans) have also been funded. More recently, projects to develop or enhance vertically integrated networks have been supported.

**Theme:**       **WORKFORCE DEVELOPMENT**

**Challenge:**   To develop the area's workforce in response to the needs of local industry and community.

**Solution:**     The Wyoming Workforce Division has one of the premier workforce development training grant opportunities in the region. It is available to supplement the costs of training new employees or retraining existing employees to meet business demands. Programs include education and training and technical assistance.

**Resources:**

Leah Bruscino  
Northwest Regional Director  
143 S. Bent  
Powell, Wyoming 82435  
307-754-5785

Les Brimhall  
1702 Robertson Ave.  
Worland, WY 82401  
307-347-8173

Debbie Popp  
Wyoming Small Business Development Center  
Laramie, WY.  
307-766-3505

Worland is fortunate to have the opportunity to collaborate with Northwest College to provide workforce training at the new community center. I would recommend continued support of the Washakie Economic Development Program, which facilitates numerous programs and events that increase opportunities for successful business and community development throughout the county.

**Theme:**       **AGING COMMUNITY**

**Challenge:** Many residents—both youth and seniors alike—expressed some concern that Washakie County is rapidly becoming an older community. On one hand, this is a gift for the county, as seniors have a great wealth of knowledge and experience to share. On the other hand, young families’ with school-aged children sustain communities for the long term. The trick is to try to utilize the full potential of seniors as active, civic leaders and volunteers.

**Solutions:** Look at some of the programs available through Senior Corps. Senior Corps (a sister program of AmeriCorps) is a national organization that works to help communities and nearly half a million Americans age 55 and older share their time and talents to help their communities. More specifically, they outline programs that can help seniors contribute to community through its Retired and Senior Volunteer Program (RSVP). Organizations can also apply for grant funding to operate RSVP programs. Currently, two communities in Wyoming are operating RSVP programs. Please contact them to see how they are using senior activism and senior time to enrich community.

**Resources:**

Central Wyo. RSVP  
Mary Baughman  
1831 E. Fourth  
Casper, WY 82601  
Phone: (307) 265-4678  
Email: [cwrsvp1@juno.com](mailto:cwrsvp1@juno.com)

Southeast Wyo. RSVP  
Claudia C. Johnson  
3304 Sheridan Ave  
Cheyenne, WY 82009  
Phone: (307) 634-7787  
Email: [sewyorsvp@juno.com](mailto:sewyorsvp@juno.com)

There is also a vast amount of information available at the website:  
[www.seniorcorps.org](http://www.seniorcorps.org)

And at the Wyoming profile for the National Service Corporation:  
[www.nationalservice.org/stateprofiles/ny\\_intro.html](http://www.nationalservice.org/stateprofiles/ny_intro.html)

# **What we Heard From What Was Said (Major Themes)**

## **Communication**

- Between entities
- Between communities
- To the public

## **Infrastructure**

- Drinking water
- Sewer
- Streets
- County Roads

## **Bike/Walking Trail**

- Within each town
- Between towns
- To parks, historic places and tourist attractions

## **Water**

- West End Irrigation
- Water supply redundancy

## **Facilities**

- Indoor, community pool
- New library
- New Museum
- New Senior Center
- Community Center

## **Environmental**

- Recycling
- Smell
- Drainage/water quality

## **Medical**

- Hospital expansion
- New clinic
- Satellite clinic in Tensleep
- Recruitment/retention of doctors and specialists

## **Workforce Development**

Wages  
Training  
Recruitment  
Work ethic/customer service

**Housing**

Affordable  
Workforce  
Senior  
Assisted living

**Funding**

1 cent sales tax  
Mineral Royalty distribution  
Local resource development

**Finish what we start**

# **WHAT WAS SAID AT THE INTERVIEWS**

The Resource Team spent three days interviewing the local residents to hear what they had to say. Those being interviewed were directed to answer three questions:

- ✓ What are the major problems/challenges in Washakie County?
- ✓ What are the major strengths/assets of the Washakie County?
- ✓ What projects would you like to see implemented in Washakie County in the next two, five, ten, or twenty years?

We have listed below, without comment, what we heard from those who volunteered to be interviewed.

## **Question #1: What are the major problems and challenges in Washakie County?**

- Infrastructure
- Island mentality, need to think it is a whole
- Quality workforce
- Ditto
- Unity of purpose
- Apathy
- Money, funding for everything
- Ditto
- Affordable workforce housing
- Ditto to above
- Ditto to all above
- Affordable medical insurance for small business
- Small group of leadership need larger
- County planning
- Controlled and sustainable, avoid the boom or bust, controlled, managed
- Ditto above
- Need housing, have moved to other communities because of lack of housing
- Lack of customer service
- Transportation, long way to interstate
- Worland and Washakie doesn't do a good job of keeping people in the community on weekends
- Island mentality, need to think it is a whole
- Quality workforce
- Ditto
- Unity of purpose
- Apathy
- Money, funding for everything
- Ditto
- Affordable workforce housing

- Ditto to above
- Ditto to all above
- Affordable medical insurance for small business
- Small group of leadership need larger
- County planning
- Controlled and sustainable, avoid the boom or bust, controlled, managed
- Ditto above
- Need housing, have moved to other communities because of lack of housing
- Lack of customer service
- Transportation, long way to interstate
- Worland and Washakie doesn't do a good job of keeping people in the community on weekends
- A lot of different needs, never have enough money for money. Funding challenges
- Forward looking communities, came here now want it to be a destination place
- Like to have people come to Worland or Tensleep just for the day rather than Cody, Thermopolis.
- With changes in what state wants, facing some solid waste, how are we going to do it in an environmentally sound way.
- Tax base, heavily dependent on oil industry, production has decreased about 10% every for the last 10 years.
- Rumors of the Walmart coming, making sure businesses come, concern over runoff into creeks for. Make sure that designed for environmental quality from water runoff from parking lots plans so we need as it grow
- Awful smell, trying to help sugar company work with getting pods
- Lack of communications between entities
- Washakie county library, not getting the support we need.
- Building economic bases so we have good workforce wages
- Keep on top of the building don't want it to be slipshod. Worland was hub 40 years ago, want it to come back
- Workforce, need enough people for jobs
- Department shortages, getting more people to stay
- Working together better
- Want to work better with Tensleep and other entities, cause and effect, so they don't have fear to say things, more education.
- Lack of communication among entities, even up to the state level. Talk to each other more as equity
- Ditto
- Ditto
- Ability to fund the projects we need
- Workforce
- Workforce housing
- Infrastructure
- Some duplication of services
- Ditto all comments
- Groundwater runoff concerns, esp. Walmart station
- Ditto all

- County is disconnected, tourism opportunities, need to with all of the county, encourage people to stay in the area to capture dollars
- Need to be connected as a county for funding opportunities.
- Tensleep has unique problems with affordable family housing.
- Schools need to be more connected and needs to work more together, encourage students to
- Washakie counties need to use natural resources to create value added products.
- Ancient library building, need a bigger and updated facilities, need to update with library material, not meeting rooms, Bigger more modern space to serve the public
- Two places where there is junk needs to be cleaned up, burned up trailers, offer an incentive in property cleanup. Pride in property.
- We have to be honest about civic pride, some of entrances are great. It looks like a little tired. Overall impression needs to be good
- In competition with other counties for funding. What does it take to get the funding.
- Building within 1 mile radius and need to address the zoning issues, for the future to address infrastructure
- Challenge of the rumors is difficult to containing and get the truth out. Need to find out the facts and not rely on the rumors that prevail
- ditto
- lack of cohesiveness of people managing hospital and the community, lack of communication
- lack of physician group building
- Ditto
- Ditto
- Ditto
- More community support for physicians to keep them here
- Where clinic is located, space, arrangement, access
- Lack of full service hospital, ICU
- Lack of psychiatric inpatient unit
- Ditto
- Poverty accessing services
- Ditto
- Lack of home health
- Ditto all
- Lacking specialists –such as oncology, chemotherapy
- Lack of adequate medical employees
- Aging population – increased medical needs, lack of employees
- Major improvements needed to hospital
- Primary vehicle for funding healthcare has changed – less dollars more needs
- Ditto all
- Remember private physicians when solving issues
- Recruiting people to live in community – what attracts people to the area
- Home health, elder care
- Lack of space, need more space for services
- Ditto
- Political culture that allows for certain groups to outweigh community good

- Under insured and non insured impact ability to deliver care
- Recruiting professionals, what community can offer for families
- Ditto
- No social services, no home healthcare
- Recruiting people to work at hospital
- Greenway
- Substance abuse
- Ditto plus inpatient services needed and means to pay for
- Affordable housing
- Shopping resources
- Lack of transportation for specialty services out of community
- Immigrants - uninsured, non citizens difficulty accessing services because not citizens
- Un insured and under insured – access to help get the insurance or information
- Community amenities to attract young facilities
- Lack of swimming pools
- Ditto
- Proactive approach to economic development
- Getting public to understand we need to enhanced infrastructure to promote grow
- Availability of workforce
- Ditto
- Commercial air traffic
- Infrastructure
- Smells
- Ditto employment of professionals
- Not being mineral rich as other counties, royalties could be dispersed better
- The way the state distributes mineral royalties is not adequate
- Energy companies end up being tax
- Community vision for Worland --- need to know what our vision is the future what we want to be
- Housing availability
- Adopt the DittoSmart growth programDitto need to get on board with it
- Remedy county sewage, septic, can't handle growth when can't handle what we have.
- Aging population
- Lack of new families
- Kids need to be involved in extracurricular activities
- Isolation issues
- Lots of duplication of services (Headstart) would like to
- Family services are not as strong as they are in other communities
- Funding is an issue with all the projects to do
- Media availability or access
- More job opportunities and benefits that would bring them to the communities
- Teenage drug and alcohol use
- Shave a status quo attitude me need to break out of
- Many don't realize the poverty we have in our community
- Lack of consequences on the juveniles offenders
- Lack of opportunity or to participate in preplanning s

- Funding
- United way would be good
- Ditto on drug and alcohol abuse
- So many different projects can do, what we do have for young families to do need repair.  
New equipment in the park
- Need for quality day care
- More knowledge of what we actually have in the community
- Status quo, lack of progressive thinking
- Ditto on poverty
- Mentors for young people in community who are difficult to work with, don't know what the resources
- Non credit adult learning opportunities
- More teen activities
- Ditto poverty
- Ditto poverty
- Fundamental resistance to growth and economic development
- Increase in availability for services such as rehabilitation, need access to psychologists,
- Infrastructure problems, no alternatives that for those who don't go to college
- Ditto on not enough services for the whole community
- Lack vocational education, no alternative programs for dropout
- Alternative placement high school, for kids who may drop out, use drug and alcohol
- Divorce, drug alcohol need more family support
- More grandparents raising children, making services available
- Parenting services
- Ditto grandparents
- An entitlement attitude, not willing to anti up for the services and facilities we need
- More availability for child care
- A lack of knowledge of services available in community
- Greater involvement in faith based organizations to deal with problems
- Attitude of change difficult to overcome. Difficult overcoming the Dittotohis is the way we have always done it.
- Technology is critical,
- Problem with hidden infrastructure, water, curb gutter, sewer, streets
- Walking paths needed
- If we aren't willing to pay for it, it will never happen
- If we want it we need to do it ourselves
- Need library to attract people to community
- No pediatrician, many folks have to go to other community for specialists
- Need to keep upgrading technology
- Unify the county, need to work together for common projects and common good rather than working together. Break down some barriers that all communities are part of Washakie county
- Growing lack of contribution ag brings to community, dollars, etc.
- Lose touch of what brings to the community, what they do
- Contribution of ag to cultural
- Remembering an ag community, remember roots, makes us who we are

- Workforce, lack of and poor quality – penmanship, grammar, dress
- Ditto
- Ditto
- Raised a society is blame somebody for my issues
- Growers have a difficulty time finding employees, especially those who will work the 12 hours required
- Ditto
- Affordable housing
- Isolated, small narrow valley, transportation getting products in and out
- Some road are difficult, very little if any maintenance – county and city cant decide who does what
- City beautification for example irrigation ditch
- Pressures of additional development on agriculture on adjoining land
- Irrigation and drainage districts no longer in ag lands and creates challenges
- More defined path that development needs to take
- Very few visionaries around the town, not afraid to look at future and take a risk to improve Worland
- Lack of events that whole town attends, it was fun and exciting
- Lack of enthusiasm
- Lack of goal and vision
- Difficult time reaching consensus in community
- As development takes ag lands away or being bought by non-producers because they have the resources to pay more than the farmer
- Water, another irrigation district? Water rights distribution for ag
- Healthcare
- Need opportunities to bring kids back
- Federal lands a challenge to agriculture
- Radical environment groups that have nothing on agenda but stopping grazing on public lands
- Where is everybody
- Getting people involved
- Washakie county and Worland area is spreading very fast,
- Everybody wants an acre of land,
- Washakie has no zoning laws and it is an invitation for disaster.
- Small crops of trucks, cars, trailer houses,
- Lack of zoning and beautification
- Ditto
- Ditto
- ditto
- Senior center voted for a tax increase, need to do it right the first time
- Library needs updating
- Communication
- Fractionalized decision makers, everyone guarding their own turf, chamber of commerce. Communication needs to increase among groups must all come together
- Ditto
- Ditto

- Town isn't child friendly
- Need bike and walking path
- Zoning, beautification
- Bike paths
- Ditto
- Improved medical facility needed
- Doctors keep coming and going
- County is relatively isolated
- 16-20 Hwy gets lots of traffic. Big horn Basin needs roads need improvement
- Ditto beautification and zoning
- Zoning needs to be enforced
- Senior center, shouldn't need to do grants, three public hearings should have three public hearings before voted on
- Ditto bike paths
- Community hall burned down, why letting 600,000 dollars go because we aren't rebuilding
- Ditto
- Ditto
- Clean up
- Road and infrastructure issues
- Not developing here in Worland
- Streets in town are terrible
- Ditto to bike and walking paths, current situation is dangerous
- Ditto bike path
- Want bike path wide enough
- Dips in streets
- Parking issues
- Streets need to be wider
- Smell
- Ditto streets in Worland
- County has all the money, city needs it. Put it where it does the most good.
- streets need to be properly maintained
- community hall needed
- ditto
- need community facility with a large kitchen
- Citizens of this county are petrified of taxes, that attitude needs to change, need to step up to the plate and use taxes
- Attitude is to cheaper to let houses burn down
- Swimming pool is a real eye sore
- Law enforcement has a double standard. If young male is more likely to be stopped. If a young women more likely to get a warning rather than ticket.
- State government is rich and counties are poor. Why do we have to beg for our money back.
- Lots of money goes to engineers and consultants
- Mineral royalties, we need bigger piece of the pie better distribution formulas
- No clear direction to where the county wants to go

- Communication swimming pool is an eye sore and a liability
- Potential of downsizing because of our national economic situation (wars, Katrina) have less and less money for the programs we deliver
- Ditto, reduction of program money that serves agricultural and communities
- Motel rooms for conventions, no place to house training meetings, etc.
- Isolated
- Lack of funding to all entities including schools
- Water quality
- Ditto
- We seem to focus on one area such as ag and the economy is very diverse
- Reluctance to move forward especially if the word Tax
- Maintaining sustainable prices for agriculture commodity
- Maintaining quality state and federal employees is difficult to sustain because of wages in private industry
- Air quality could become a challenge for the community of air quality regulations are enforced or brought into compliance
- Attracting small businesses
- Attracting attaining a solid youth workforce
- Housing, affordable housing
- Ditto all three
- Clean up the town of Ten Sleep so it looks presentable to tourists
- Infrastructure #1 must be taken care of
- ditto
- housing
- affordable housing
- additional people, try to build it into the great little town this is
- Something more for kids to do
- Higher wage base for employees
- Steady, consistent growth, build infrastructure that moves forward in a acceptable way
- Using recourses for all citizens
- improvement with people moving, need additional building that was dropped year  
Hospital
- Don't have a motel
- Ditto
- Ditto
- Ditto
- Ditto
- Infrastructure and tourism
- Clean up the old buildings
- Preparing for growth
- Ditto
- Ditto
- Ditto
- Housing and Senior Housing
- Streets, get ready for additional people, use 1% sales tax, infrastructures
- Washakie county needs to remember Ten Sleep is here

- Ditto
- Ditto
- Ditto
- Been here for more getting along
- Housing
- Health of school system, depends on the growth of population, need more kids
- We used to have a viable business, need to revitalize use the businesses on the big horn mountains
- Ditto
- Ditto
- Affordable housing for elderly
- I live at meadowlark, sewage and water has been shut down, health inspectors came today, black mold gotten from working there, environmental problems, needs to be gouging of people who need to be gouged. People of gone literally crazy on the mountain. Needs to be cleaned up.
- County needs to be more active on the health issues on the mountain
- Additional lodging, stimulate additional tourism,
- Need new grocery store
- Ditto
- Ditto
- Ditto
- Capitalize on our name for attracting tourists
- Same for Washakie County as a name, point out all our geological formations,
- Both communities are not both viable, Worland and Ten Sleep need to stop fighting.
- Strong working relationship with the Forrest Service.
- Rural water development
- Traffic control, deputy sheriff lives here, but has to serve the rest of the county as well
- Affordable land
- Affordable taxes
- Keep up with the new federal mandates for infrastructure.
- Communication could improve throughout the county
- Landfill big concern
- Ditto
- Ditto
- Ditto
- Ditto
- Satellite medical clinic
- Better information that there is no services between Ten Sleep and buffalo
- No signs advertising, better marketing to stop in Ten Sleep
- Lack of support from County Commissioners in regard to the library
- Creating a solid infrastructure in both towns
- Communication with hospital and Ten Sleep
- EMT Services
- High cost of chamber
- Lack of Funds
- Need a full time grant writer

- Air Pollution
- Drugs Marijuana etc
- Dollar Rich Penny Poor mentality
- Lack of Communication between cities and county
- City Council lacks vision
- Overcoming the gap that separates Ten Sleep and Worland
- Attracting young people to the community
- Streets
- Limited accommodation
- No assisted living accommodations
- repair services in Ten Sleep
- Swimming pool
- Clean up Ten Sleep
- Housing
- No farmers market
- Youth workforce
- Community clean up
- No Youth activities
- Streets
- Traffic control
- Infrastructure
- Improve hospital
- Lack of Senior housing
- Water development
- No motels
- No grocery store
- Need to clean up
- Need a tax break for seniors
- Growth oriented jobs
- Economic development
- Housing
- Protect the environment
- People need to work together
- Housing
- Potholes in the streets
- Labor force is weak
- Infrastructure is weak
- Vandalism
- Pre occupation with economic development
- No daycare
- Lack of vision as a unit for the good of the whole
- Substance abuse
- Limited workforce
- Young people leave the area

- Worland/Ten Sleep conflict
- No communication
- No impact money
- Getting everyone on the same page
- Lack of vision
- Daycare
- Apathy
- Limited workforce
- Lack of leadership in Worland
- No master plan for the county
- How to fund projects such as pool senior center community center
- Labor pool shortage of housing revitalizing downtown
- Infrastructure
- City of Worland
- City of Ten Sleep
- County Commissioners
- WDA More places for teenagers to hangout
- No rec center
- Garbage
- We need better lunches
- All the parks are boring
- More fun places to hangout
- No Bike paths
- Littering
- Drugs and drinking
- People smoking in public places
- To much garbage in the town
- No bike paths
- (5) ditto
- No rec center
- Water fountains don't work
- Different kinds of restaurants
- We need less drugs
- There are robbers and that is a major problem ( crime?)
- We need a better swimming pool
- We need more bathrooms in the park
- Roller skating rink with roller skates that have four wheels
- Public restrooms at the park
- Bad store security
- Better swimming pool
- Littering
- Better swimming pool
- No bike paths
- Bathrooms in the park are not good

- Graffiti
- Swimming pool
- Different restaurants
- Movie theater is not open
- Litter
- Bike paths
- Swimming pool
- We need better drinking fountains
- Littering
- Vandalism and stealing
- Poverty
- Need more jail space for naughty people

**Question #2: What are the major strengths/assets of Washakie County?**

- Major asset in Washakie county is Ten Sleep
- Location
- Scenery
- Ditto
- Rural atmosphere
- Ditto
- Ditto
- Water
- Wildlife
- Beauty of the area
- Mountain
- Ditto
- Ditto
- Ditto
- Great spot
- Sense of community, people live here because they want to
- Ditto
- Ditto on last 5
- Ditto
- Concerned citizens, evidenced by this group[
- Outdoor recreation potential
- Wildlife, animals
- Rural atmosphere
- Hunting, fishing
- Great retirement area
- Ditto
- Ditto
- Beauty of area, lack of traffic
- People who live here
- Great place to raise kids

- Ditto
- Ditto
- Good student teacher ratio
- Landfill
- Natural resources
- Willingness of people to volunteer and serve community
- New café
- Existing asset ;and mini-mart
- Develop mountain assets
- Excellent school, one in six chance of being valedictorian
- Excellent summer radio
- RV park
- Red Roof Ranch
- 6 churches in
- Golf course
- Lots of places for trail road
- Pottery shop
- Rock climbing
- New businesses establishing internet business
- Small business owners
- Location, proximity, to all good things, name
- Grateful to use public lands
- Free recreation, for families
- Highway department does a good job
- Active in helping the youth, strong work and social ethic
- Senior center a real asset
- A lot of basic freedoms, camping; lack of laws
- Ambulance
- Library
- Fiber optics technology
- Ditto
- Ditto
- Ditto
- Good quality people
- Lots of volunteers, everything that gets done is by volunteers
- Down to earth, friendly people
- Little smog and lots of clear sky
- Mountain
- Agriculture
- Recreations
- County commissioners let us down on recreation
- Family community support and atmosphere
- Best tasting water in the world
- Internet, fiber technology
- Ten Sleep radio
- Ditto

- Ditto
- Free internet access
- Quality bathroom
- Beautiful city park
- Good horse riding, ATVS, mountain bikes should be promoted
- Castle rock
- Not all recreation is advertised
- Hiking
- Canyons great to explore
- Museum
- Ditto
- A new highway in 2009, new sidewalks, money available to improve storefronts
- Water is untreated, very pure, Pepsi bottles Ten Sleep water
- Rock formations
- Fish hatchery
- Ditto
- Ditto
- Fiber optics
- Ditto
- Nature conservancy
- Best air quality in the state
- Ditto
- Ditto
- Volunteer ambulance and fire department
- Lack of noise pollution
- Tourist get to see sheep and cattle drives
- TCT West
- City government
- Small classroom, scholarship opportunities, get involved in sports where they couldn't in larger communities
- No Woodstock – music festival
- Bring in new asset
- Water
- Good schools system
- Real sense of community, come together in adversity
- Potential for small business to be successful because of the area
- Hunting and fishing
- Ditto
- Outdoor recreation has opportunity
- Ditto
- Quality of lifestyle
- Our people
- Weather
- Low cost of living
- Weather
- Tourism, doing a good job of marketing Washakie as gateway for

- Bring in new assets
- Water
- Good schools system
- Real sense of community, come together in adversity
- Potential for small business to be successful because of the area
- Hunting and fishing
- Ditto
- Outdoor recreation has opportunity
- Ditto
- Quality of lifestyle
- Our people
- Weather
- Low cost of living
- Weather
- Tourism, doing a good job of marketing Washakie as gateway to Yellowstone
- I love Worland, safe, great people, cohesive community, glued together
- Air is clean,
- Outdoor life
- Library
- Hospital
- Schools in both communities
- Friendly
- Lots of churches
- Churches get along
- Everyone is helpful, people pitch in to help others
- Ditto
- Rely on a lot of individuals and the community, a very willing to work with others
- I love it here.
- Relatively safe to live here
- Ditto above
- People always make me feel welcome, never felt of an outsider
- WyDot has several projects that has improved roadways into the county,
- Intersection at bridges, widening traffic lanes, roads safer to travel on.
- Ditto
- Ditto
- Great place to raise kids
- City council is willing to listen to concerns
- Great quality of life, no lines
- Diverse economic base. Largest manufacturing base per capital in the state, agriculture, diversity of jobs available
- Store owners are friendly and willing to get you what you need.
- Wealth of talent and brainpower is extensive
- Strong farm and ranch community
- Dedicated law enforcement system
- Lots of pride
- Quality of life

- Economic development, city county people have done and excellent job of preparation
- Healthcare, education, economic development, boards are prepared
- Recreation opportunities
- Golf course
- City and county entities work hard that work with all areas of the county.
- Buy locally, but often leave and you can return, to save a sound community
- Great locations from Denver, billings
- Volunteers fire department.
- Quality of life, people
- Recreational opportunities
- Skiing, golf, lots
- Great volunteers
- Community of churches 6 in Ten Sleep, churches help churches,
- Healthcare is excellent. Can be flown to billings
- Schools are great, Hathaway Scholarship is very good
- High quality water
- Ditto everything
- Realize you are home when you cross that county line, feeling of pride
- Potential of working better together, since we have lost some of our hardheadedness
- Ditto on everything
- Airport
- BLM off trail ways recently developed and approved
- Access to our leaders
- Big horn mountains
- the River
- little wind
- things have been improving for local business
- health care
- Fiber optic systems
- we take care of our own
- We have a lot of money, a lot more than some places
- Lots of programs and federal domestic assistance
- 50 grant opportunities in Wyoming. People have to do hard work to apply and makes sure it is sustainable.
- Raise good kids and keep them here.
- Healthcare, banner health
- Ditto
- Well funded hospital for size of town
- Good facility
- Ditto
- Ditto all
- Good healthcare community – good professionals
- Ditto
- Ditto
- Healthcare
- infrastructure

- Low cost of living
- Hospital
- Resources of visiting physicians, specialists
- Ditto
- Ditto
- Resources we do have have good networking and collaboration
- Lot of excellent resources
- Caring community
- Ditto all
- Anything for children is a priority – schools, recreation program
- Best mental health and substance abuse for size
- Nice place to live
- Nice place to fish
- Ditto all
- Health care professions we have in this town
- Biggest town in southern big horn basis, advantages of being the hub
- Great place to live
- School and recreation programs
- Outdoor opportunities
- Take advantage of good medical services and providers
- People who are committed to having good health care services
- Mix of healthcare professions we have here that visit or live here is truly phenomenal.  
Nurses, great hospital supported by professionals
- Lack of boom or bust – stability
- Doctors, nurse practitioners
- Generous community, fund raisers
- Churches
- Opportunities to grow, pursue passions, education
- Hospital care
- Healthcare professionals
- Collaboration between services, communication
- Amount of public lands
- Lots for people to look at
- Have some pretty cool stuff
- Way ahead in infrastructure
- Cost of living
- People
- Ditto
- Water
- Geographic location
- Great place to live and raise children
- Small community, things are close together, get to know neighbors
- Agriculture
- Pepsi,
- Crown Cork Seal, Devon and what they do for the community
- Ditto

- Great location
- Safe, small town
- Lots of industry for size of town
- Employment diversity
- Air service
- Health care
- Communications (RT)
- Workforce Diversity, agriculture industry, unkers,
- Good school system
- School system
- Aging community
- Struggling in school populations
- Location
- Isolated, location can attract some business
- Communication is a problem among agencies and departments
- Welcoming of new community members
- Community comes together when the families re in need
- Quiet, simple life, criminal activity, blessed with what we have
- Easy placed to live and raise children
- People who are willing to provide quality education and pass bond issues
- Services work together to do have, they are shorthanded, excel at what they do
- Educational system is outstanding
- We do a lots for kids
- Lots of support for education and the school
- Enjoy activities the education system provides
- Enjoy openness of government
- Talk to our legislators, city council, commissioners
- Know your neighbors,
- A lot of opportunities
- Quality of life
- Good education
- Safety for children
- Quality of life
- Quality of small town
- Big brothers
- No wood stock
- Boys and girls club
- Barbeque fest
- Culture fest
- County fair
- Missoula children's theatre
- Youth activities
- Good place to start a business
- Good place to raise kids where didn't have to lock doors
- Community meetings
- Community resource meetings once a month

- Ditto good schools
- A lot of sports, clubs, things to do. Many options
- Good school safety
- Ditto
- Good community
- Great water
- Ditto on safe schools
- Weather
- Schools have lots of activities for schools
- Community agencies work closely together
- Ready to talk about change and expansion
- Support of kids through parents, agencies, services are great
- Healthcare system is good
- Good schools
- Healthcare
- Ambulance service
- EMTs
- Hospital has worked hard
- People very committed to community
- Concerned involved leaders
- Ditto quality of life
- Opportunities for community involvement
- Cultural opportunities that are brought in – museum, theatre
- Religious, number of churches, ministerial association
- Lots of people who volunteer
- Public service agencies work together rather than complete
- 4-H clubs, cooperate with other activities
- Business communities really supports the education
- Diverse county, mining, petroleum, gas, ag, Pepsi, etc
- Lack of peaks and valleys
- Agriculture community, enjoy benefits of fresh air
- Life lessons from ag background, equipping us to adapt to a variety of situations
- Core values of community
- Spirit of ag that attracts visitors to us, open space, individualism
- Culture we have
- Caring community
- God fearing community
- Children
- Pretty good place to raise kids
- Outdoor activities, hiking, fishing, etc
- Clean industries, pay good wages,
- Diversity
- History interpretation of firsts and unique history (1<sup>st</sup> horse and man) cultural center/museum
- Worland is a postal sectional center, Worland is centralized for training purposes
- Centralized

- Great schools
- Excellent water supply
- Climate
- Hunting and fishing opportunities
- Outstanding, hard working caring people
- Airport
- Railroad
- Amount of public land
- Volunteers are a big part
- Willingness of the ag community to improve operations and conservation
- Outstanding number of stores, h
- Post office
- Stable and Diversified economy
- Ditto
- Safe community
- Community pride
- Tourism – Washakie has an important role in that
- Game and Fish hunter access program Washakie has a higher participation. Willingness to allow public on private property
- Ditto all above
- Broadband opportunity that can be tapped
- Community Center is a real asset
- Farmers and ranch community is very important, major strength
- Number of natural resource managers that reside and are experts in their fields
- Schools
- Parks
- Golf course
- Small town atmosphere
- Diverse business community
- Sunshine
- Room to grow
- Water
- Stable diverse economy
- Quality of people
- Strong ag base
- Room for expansion
- Fiber communication
- Good schools
- Safe
- Code enforcement
- No tactical plans
- Supportive community
- Family opportunities
- Super healthcare
- Natural attractions
- Scenery

- Great location
- NWC
- Community center
- 1% tax
- Super healthcare
- Population with strong affinity for firearms ownership
- Low crime
- Small government
- Safety
- Schools
- Desire to improve problem areas
- Appearance mostly clean
- Size if perfect
- Great place to raise kids
- People
- Fiber optics
- Hwy dept
- Senior center
- Water
- Fish hatchery
- Concerned citizens
- Great retirement area
- Recreation
- No traffic
- Great place to raise kids
- Ditto
- Volunteers
- Ditto
- Tourism
- Parks
- People
- Schools
- RV parks
- Senior center
- Hwy dept
- Climate
- Museum
- Public lands
- People
- Wildlife
- Water
- Scenery
- Parks
- Fire dept
- Small classrooms
- No-woodstock

- Location
- Hunting fishing
- Small businesses
- Churches
- Concerned citizens
- Ditto
- New cafes
- School
- Eleutian
- Museum
- Rodeo
- No-woodstock
- Tow bars
- Rv Park
- Churches
- Golf course
- Trial rides
- Hunting
- Two beauty shop
- Pottery shop
- Rock climbing
- Red Reflect Ranch
- Church camp
- Perfect place
- Magical place
- Water
- Law enforcement
- Banking industry
- Small business
- Economic development director
- Small business
- Doctors
- Health care
- Teachers
- School district
- Good communication
- RT Connect
- Utilities are reasonable
- Rocky Mountain
- Rich in minerals
- Industry
- Fantastic place to live
- Safe place
- Police force
- Schools
- Hospital

- Recreation opportunities
- Strong mfg base
- Low cost of living
- Chamber of Commerce
- Climbing hiking etc
- Schools
- Police department
- Schools
- Lots of parks
- Policemen
- Hospital
- Security
- Sports
- Parks
- Ditto (5)
- Scenery
- Skate park
- All the fun parks
- Skate park
- Schools
- Clean grocery stores
- Parks
- Beautiful not over populated
- Lots of open spaces
- Base field
- Parks
- Stores
- Banks
- New equipment at the park
- Ditto
- Ditto
- Parks
- Swimming
- New park equipment
- Basketball
- Soccer
- Skate park
- School
- Parks
- Skate park
- New equipment at the park
- Schools are cool
- Museum
- I feel safe
- BLM
- County Seat

- Courthouse
- Small community
- Friendly town
- Doing some development
- Nice place to live
- Better golf course in the big horn basin
- Ditto
- Climate
- World class outdoor recreation
- Good fishing
- Hunting
- Surrounded by public lists
- Ditto
- Ditto
- Ditto
- Ditto
- Boys and girls, big brothers
- Churches
- Small town atmosphere
- Conscientious elected officials
- School district
- Excellent education compared to other small communities
- Trying to build a nice community center
- Schools
- Community seems child oriented
- Wonderful people
- Great community
- Good schools
- Fantastic people
- Work together to get things done
- Wonderful weather
- Ditto
- Ditto
- Ditto
- Ditto
- Ditto
- Recreation
- Water
- Pepsi
- BLM
- Oil and gas production
- WBI
- Good people
- Good businesses
- Many church denominations
- Ditto

- Ditto
- Government Agencies, state and federal a lot of income comes from employees
- Best hospital in the area
- Ditto
- Ditto hospital
- Good hospital staff
- Ditto
- Snow machine trails
- Public lands great, but slowly getting shoved off, more restrictive
- Recreation
- One of the largest snow mobile trail system in the state
- Ditto on water supply
- Ditto USDA service center
- High speed internet
- Ditto water supply
- Snow, recreation, 4wheeling camping,
- Wyoming Sugar Factory purchase and keep industry here
- Sugar beet industry, shows what can be done when people work together
- Ditto
- Friendliness of people
- Traffic
- Recreation
- Farming
- Great place to live
- Ditto

**Question #3: What projects would you like to see implemented in Washakie County in the next two, five, ten, or twenty years?**

- Bike trails and walking paths finished in short term
- Market the golf course, hunting fishing snowmobile, more hotels conventions, to accommodate
- Streets repaved
- Business developed
- 100% business in town of Worland
- Comprehensive county plans
- Develop infrastructure, sewer, fiber optics, can't have growth until we have the infrastructure
- More retirees moving in, expand medical, senior center, recruit younger people
- Ditto
- Elderly, upscale housing
- Love to see online programming businesses
- More housing
- Ditto the job growth
- Major tourist stop, try and get them suspend the night

- Incentives for businesses come and locate our business,
- Tax abatement, tax increment financing, business incentives
- Housing, be ready next time
- Business park development be ready for any business
- Tourism, we need to get more out of them while they are here
- Must do something about the health care
- Must have good health care to keep and attract health care
- College campus, branch from NW
- Lots of training issues so workers don't have to leave town
- Business improvement district, public ally sanctioned, but don't have the aesthetics
- Trade school, not just traditional education
- Start young with people who need to learn customer services, how to be good employees,
- Increasing population in 20 years, college students come back to work area
- More flights out of the airport
- Continue to expand the medical community.
- County run by professionals rather than by volunteers or elected officials.
- Swimming pool
- Development of recreational opportunities
- More strength between Worland and Ten Sleep
- Stronger relationships and more recognition
- Ditto
- Ditto
- Grocery store
- Paved street
- Sidewalks and streets
- More things for the kids
- Ten Sleep welcome sign
- Swimming pool
- Affordable housing for everyone
- Better wages
- Fountain with free water explaining the
- 20/30/40 acre park for recreational park for youth, organized and steady growth , baseball soccer, need to develop a tax base that can pay for the things
- 7 year plan to increase population
- Ditto
- Ditto
- Ditto
- Liability on pools and is huge, maintenance his taxing
- Satellite medical
- Ditto
- Ditto
- Senior housing, which would free up other housing for younger people
- Public transportation
- Improving store fronts in both towns
- Motel, need place for
- Ditto

- Ditto
- Ditto
- Spring creek raid, for history sheep and cattle war, promote historical opportunities
- Ditto
- Ditto
- Hotel
- Revitalization of big horn mountain resort
- Ditto
- Ditto
- Ditto
- Summer recreations, condos for people to stay longer
- Assisted living
- Walking trail, bike path
- Chamber of commerce more advertising, emphasis, better signage
- More music festivals, and activities
- Project in Worland to teach customer service training
- Rural water development,
- County could provide connectivity between castle gardens, mountains, bike paths, roads
- Old highway turned into bike paths
- Connect the town to old highway to get up the mountain
- Housing for families
- Ditto
- Walmart in Worland
- More rural water development, 90 % haul water because it isn't fit
- Washakie County a destination, not a pass through.
- Finish highway between Worland and Ten Sleep,
- Rural water
- Ditto
- Ditto to everything
- Bike and pedestrian paths,
- Problem with what to do with a violent individual. Need to look regionally for options and resources, because it is an incredibly expensive endeavor
- Continue making wise choices on infrastructure issues, maintaining and improving recreational opportunities
- Sensible development with broadband to bring in small business
- Connect Worland Ten Sleep for tourism issues
- Infrastructure sound
- Agriculture thrive
- Worland Grow/ Ten Sleep grow and prosper
- 15- 20 thousand people, clean industry, people stay rather than drive through
- Like to see people who are hear stay working on what they want
- Facility at fairgrounds improve
- Library
- Wydot shop for engineers
- Safe biking walking running trails along rivers and in town

- Local or state government try to get tournaments like basketball or soccer tournaments to bring people to come and stay in communities
- More development of the arts.
- Schools grow
- Fence around canal for safety
- More recreation for youth
- Ditto
- We will have a museum with a place for performance arts
- Branch campus from Northwest her in Worland
- Worland is going to look better
- Will look like a more vigorous community.
- Need people in their 40s
- Use the library, visit other libraries, take pride in what you have
- Brand new library
- Hoping we don't lose some of the stuff we have
- Ditto new library in both Ten Sleep and Worland
- Need informed educated public
- Access to open free, information with all technology as well.
- Ditto everything
- Build clinic, perhaps in Ten Sleep perhaps and outreach.
- Just don't brink in too many people
- Recycling opportunities grow, figure out how to make it work
- Don't want growth to sacrifice agriculture
- Ditto
- Convention center of some kind
- Don't have enough motels, restaurants to bring in large numbers of people
- Not enough meeting rooms
- Recycling lots of feed lots, it would be nice to work with composting facilities, with feedlots, where people buy compost.
- Filters, storm captors, on storm drains, good idea to filter what goes into
- Fix out septic systems
- ICU
- Major center for Big Horn Basin
- Not be a transfer station or aide
- More space hospital, physical therapy area
- Build a clinic for existing physicians, outreach clinics to grow hospital
- Ditto
- Ditto
- Expansions to hospital, ER, rehab
- Full range of support services including hospice
- Mediation between hospital and physicians to improve communication and get a meeting point for betterment of community
- Improvement of community programs and services that attract young families
- Green way
- Pool
- Ditto

- Parks
- Affordable housing
- Increased communication between communities
- Mediation not only in medical community, but in general
- Increase medical services to grow without growing too big
- Communication base where elderly are receiving medications and information at home
- Technology where doctors are in communication with patients
- Public health in pool, learning to swim – retain the pool or build a new one
- Senior citizen center
- Home health services
- Swimming pool, walking and bike paths
- Ditto all
- Ditto pool
- Ditto health services
- Medical services increased
- Intensive services for mentally ill or substance abuse
- Council that get together representative of providers to look for solutions to provide services
- Ditto
- Community involvement to raise funds for community needs
- Constructed new medical clinic to house current providers and expansion
- Pool
- Curtail smell
- Ditto
- Plan for hub of area
- Ditto mediation collaboration
- More things for families to retain working families and their children
- Better way to redistribute wealth of state for healthcare, we compete with infrastructure
- Re-visit malpractice insurance
- Funding stream, United Way to develop a plan for bonds or 1 cent sales tax or funding foundation
- Possibility of having services in Ten Sleep, even part time to help them and elderly
- Library facility modernize, more family programs through library
- Full range hospital with a full spectrum of care
- Support as a community the efforts to bring in businesses
- Plan how we grow our community.
- Continued development of community center so it can reach
- Bike, walking path project completed
- Medical clinic
- Construction of museum
- Ditto community center development
- Continued revitalization of downtown, more businesses
- City auditorium
- Walking path
- Locate senior citizens center here

- Majority of money went to rich communities after all the hard work of doing 1% sales tax
- Ditto walking path
- Nice shopping, tired of going to Billings
- A shopping mall
- Walmart
- More infrastructure – sewage
- Property cleanup in the county, needs to be nicer on the fringes
- Need to keep infrastructures O&M to keep the maintained
- Mainstreet revitalization
- Live in the county, but no say as to what goes on in the city.
- At large member on the city council
- Organized business efforts in eastern part of county. Some way for communities to work together. Hope the technology will bring more to the community.
- Have to develop better system of distributing state's wealth so it doesn't pit swimming pool against a bridge project
- Future business development
- Nice to have a walking pathway
- Jim Bridger trail path, (there—already put in place
- Work with BLM to work with trails to work together for the county to assist with tourism and promote the tourism
- Cut through the bureaucracy to get things done
- What is going to happen to the swimming pool?
- Nice educational asset
- Want swimming pool
- Big chunk for the bike path funds went to environmental studies
- Welting path
- Motivational speakers i.e. Mary Kristi
- Strong role models
- Lower statistics in drug abuse
- Planned growth
- New businesses
- Walking path
- 23<sup>rd</sup> street finished
- Build on industrial base
- Plans for a community pool put into place
- Ditto pool
- Ditto pool
- Strengthen industry, by strengthening technology infrastructure
- Transportation, airport, rail system,
- Mentoring for juvenile youth, those not interested in sports
- Pool, walking path
- Pool handy cap and elderly accessible
- Will help attract people to community
- Ditto pool, walking path
- Work on the parks

- Improve museum
- Improve library
- Change in mindset that students shoot for college, more drive, work ethic, push themselves, not settling for less than they can do.
- Not enough competition
- Like graduates to return to community
- Ditto pool
- Ditto pool, walk paths, bike path
- Emphasis on continuous education
- Ditto continuing education
- Create an environment that will make kids want to return
- Adult education expanded to a campus rather than have to go out of town
- Walking, biking, pools trails
- Community education programs
- Community intentionally builds infrastructure that plans for change.
- Services in community extended because of the infrastructure.
- Available for housing for disabled adults
- Continuing education and vocational opportunities
- Bring in new business and economic growth
- Medical base where we don't have to leave town
- Improved infrastructure in technology, improve communications
- Growing ESL community, want them more comfortable
- Formal family strengthening campaign maybe through faith based organizations
- Activities facilities for retirement age
- Centralized partnering to develop recreation center
- Willingness to raise taxes to pay for what we want
- Grants run out, we have to pay for it. Must raise taxes to do it.
- More funding for technology in the schools. More on hands in class rooms
- Program for affordable housing
- Event center
- West side irrigation project
- Infrastructure including highways system
- Expansion of Northwest college in the county
- Expansion of healthcare facilities.
- Community center
- Need to replace what we lost with old community center
- Place for car shows, motorcycles
- Ditto community center
- Basketball tournaments
- Businesses have been impressed with facilities
- Community center need to improve what we have don't need two to maintain. Need to make what we have
- Community owned department store
- 1 cent sales tax
- Work together as a community
- College classes

- Volleyball, basketball tournaments
- Ditto
- Ditto
- Hunting –majority of farmers and ranchers have enrolled in hunter access program.
- 1 cent sales tax for infrastructure
- Bike path done
- Need to get mineral taxes redistributed on a per capita basis
- Drain dish along Washakie avenue needs to be piped and filled, it is narrow and rough, danger for kids who head to baseball park 8<sup>th</sup> to 15<sup>th</sup> street
- New swimming pool
- Build senior center
- Library
- Ditto continue tax
- Ditto tax
- Ditto senior center
- Ditto bike
- Ditto bike, senior center, pool
- Need to work on Ten Sleep streets
- Across tracks need to be upgraded so businesses have a nice place for customers
- More wells on the water system
- Ditto on indoor pool for year round use
- Recreation center similar to Cody's
- Every store on Mainstreet viable business
- Want it to look good
- Everything cleaned up
- River access, park, maintained
- Public swimming pool, not just for school
- Clean up junkyards
- Covenants enforce zoning laws
- Need permit to have salvage yard
- More small industry
- Ditto pool
- Walk bike path
- Dips removed from streets
- Covering ditch along 15<sup>th</sup>
- Ditto
- Library
- Stable economy
- Hospital expansion
- Scrap metal round up project to help clean up to make a profit
- Recycle cardboard
- 5 county commissioners
- Ditto commissioners
- Medical additions
- Follow up on some current plans such as museum
- Something to keep tourists here as they travel through county

- Roller rink
- Indoor pool
- Attract new businesses to community
- Grazing management
- Big Trails are prescribed fire, restore historical fire cycle, juniper encroachment
- Medical
- More variety of business
- Sustained population, don't want to get huge
- Walking, biking paths
- Farming technology, including RTK Unit (\$40,000) which allows the farmers to use GPS systems on tractors, very cool technology, improves ability to farm the ground more efficiently and use less water.
- No till farming
- Improved water irrigation management
- Federal designated heritage area (working with Debbie Hammons)
- Federal natural resources to attract tourism
- Improved highway infrastructure to improve access
- Moderate or planned growth
- Emphasize our rich heritage in paleontology area BLM permits 21 entities to come every summer, have highlighted this information
- Attract more doctors and specialist
- Riparian improvement projects continue reduce tamarisk, cottonwood
- Westside irrigation project completed, get in to production
- Ditto on pool
- Ditto get rid of salt cedar, Russian olive, to bring back native species (invasive species)
- Ditto
- Ditto
- Ditto
- infrastructure and redundancy of water supply
- like to see creationism as well as evolution in the schools
- Ditto
- Minimize or control sedimentation in the 15 Mile Creek in partnerships with other agencies.
- More water development of water to benefit agricultural producers would assist the wildlife
- Hospital
- Having a satellite health facility
- Bike paths for youth and seniors, affordable senior housing
- Motels
- Landfill will change, household pit is a thing of the past, cooperation from the public on the household fill
- Senior housing
- Pave all the roads
- Free ice water signs like wall drug
- Recyclable program
- Ditto

- Ditto
- Countywide recycle program
- Recycle as a principle rather than it being economical
- Ditto
- Ditto
- Food coop or farmers market
- Property taxes keep going up, don't want to see prop taxes going up like Cody and Jackson, cap tax for property taxes
- Referendum to cap property taxes
- Multi purpose arena
- Senior center
- Expanded air service
- Expansion of healthcare
- A vital downtown
- Expanded recreation for youth and family
- Hi tech industry
- Expanded recreation
- Dispense with activists government
- Swimming pool
- Build up infrastructure
- Community development
- New business
- Senior center
- Senior housing
- Swimming pool
- Bus line
- Bike path
- Ice rink
- Skate park
- Swimming pool
- Business recruitment
- Expanded healthcare
- Expanded senior service
- Satellite clinic
- Events center
- Swimming pool
- Develop recreation areas
- Improve relationships between Worland and Ten Sleep
- Wal-Mart
- Housing
- Parks
- Bike paths
- More music
- More customer service
- Water development
- River walk

- Assisted living units
- Expansion motels
- Transportation
- Improve fairgrounds
- Change county boundaries
- Walking path
- More business
- Jobs
- More people
- Swimming pool
- Update Newell sergeant park
- Kitchen in community center
- Re new 1 cent tax
- Transportation in the Big Horn Basin for tourists
- Airport expansion
- New library
- Increased medical facilities
- More retail businesses
- Master plan for county
- Community center
- Revitalize downtown
- Bike path
- Pool
- New High school
- Longer recess
- Laser tag
- Go to school in a bubble
- Flying car
- Bigger library
- Bigger museum
- Laser tag arena
- A zoo
- Ditto
- Go cart track
- Recreation center
- New pool
- A dog park
- New pool
- Mall
- Less trash
- Zoo
- I would like to see a candy store with just candy
- A skyscraper
- Kfc
- Parks
- Bike path

- Amusement park
- Imax
- Webkiz store
- New pool
- Rock climbing
- No more tobacco
- More parks
- Solar Power house
- No more illegal drugs
- A bunch of trees so that we could have more oxygen
- New pool
- A no parents club
- I would like land to be cleaner and not have any junk on it
- I would like more people to recycle
- Zoo
- A small monkey museum
- Fix the county roads
- Sidewalks are fixed
- Rebuild the pool
- Rec center
- Water fountains
- Mall
- Better pool

# 20 CLUES TO RURAL COMMUNITY SURVIVAL

## **1. Evidence of Community Pride:**

Successful communities are often showplaces of care, attention, history and heritage.

## **2. Emphasis on Quality in Business and Community Life:**

People believe that something worth doing is worth doing right.

## **3. Willingness to Invest in the Future:**

In addition to the brick-and-mortar investments, all decisions are made with an outlook on the future.

## **4. Participatory Approach to Community Decision Making:**

Even the most powerful of opinion leaders seem to work toward building consensus.

## **5. Cooperative Community Spirit:**

The stress is on working together toward a common goal, and the focus is on positive results.

## **6. Realistic Appraisal of Future Opportunities:**

Successful communities have learned how to build on strengths and minimize weaknesses.

## **7. Awareness of Competitive Positioning:**

Local loyalty is emphasized, but thriving communities know who their competitors are and position themselves accordingly.

## **8. Knowledge of the Physical Environment:**

Relative location and available natural resources underscore decision-making.

## **9. Active Economic Development Program:**

There is an organized, public/private approach to economic development.

## **10. Deliberate Transition of Power to a Younger Generation of Leaders:**

People under 40 regularly hold key positions in civic and business affairs.

## **11. Acceptance of Women in Leadership Roles:**

Women are elected officials, plant managers, and entrepreneurial developers.

## **12. Strong Belief in and Support for Education:**

Good schools are the norm and centers of community activity.

## **13. Problem-Solving Approach to Providing Health Care:**

Health care is considered essential, and smart strategies are in place for diverse methods of delivery.

## **14. Strong Multi-Generational Family Orientation:**

The definition of family is broad, and activities include younger as well as older generations.

## **15. Strong Presence of Traditional Institutions that are Integral to Community Life:**

Churches, schools and service clubs are strong influences on community development and social activities.

## **16. Sound and Well-Maintained Infrastructure:**

Leaders work hard to maintain and improve streets, sidewalks, water systems, and sewage facilities.

## **17. Careful Use of Fiscal Resources:**

Frugality is a way of life and expenditures are considered investments in the future.

## **18. Sophisticated Use of Information Resources:**

Leaders access information that is beyond the knowledge base available in the community.

## **19. Willingness to Seek Help from the Outside:**

People seek outside help for community needs, and many compete for government grants and contracts for economic and social programs.

## **20. Conviction that, in the Long Run, You Have to Do It Yourself:**

Thriving rural communities believe their destiny is in their own hands. Making their communities good places is a pro-active assignment, and they willingly accept it.

*\*Reprinted from Heartland Center Leadership Development, Spring 2002 Visions Newsletter.*