

2016

Antelope Hunting Regulations

Wyoming
Game and Fish
Commission



Department Website: <http://wgfd.wyo.gov>

DON'T FORGET YOUR CONSERVATION STAMP

Each person licensed to hunt or fish in Wyoming shall purchase one Conservation Stamp valid for the calendar year. See page 23 for information and exemptions.

CONTENTS

**New or revised Important Hunting Information language
is in italicized type and underlined>.**

Access & Vehicle Travel on Walk-in Areas and Hunter Management Areas.....	22
Access Yes Program.....	22, Back Cover
Age Restrictions	22
Archery Equipment	22
Archery Licenses and Special Archery Seasons	10, 22
Artificial Light for Hunting.....	22
Automatic Weapon and Silencers.....	23
Bag Limits and Number of Licenses	23
Baiting of Big Game Animals	23
Check Stations.....	23
Closed Areas	23
Clothing Requirements; Fluorescent Orange.....	23
Conservation Stamp Required and Exemptions.....	23
Dating and Display of Game Animal Carcass Coupons.....	23
Definitions.....	24-25
Department Office Telephone Numbers.....	Back Cover
Department Website	Front Cover
Disabled Hunter Information	25
Disabled Hunter Season Extension	10
Duplicate and Replacement License	25
Emergency Closures.....	25
Guides Required; Resident Guide License.....	25
Harvest Survey	25
How to Fill Out a Carcass Coupon - Diagrams	31
Hunt Area Descriptions	10-15, 18-21
Hunt Area Map.....	16-17
Hunter Safety/Mentor Program.....	25
Important Hunting Information	22
Issuance of Antelope Licenses; Number of Licenses	26
Landowner Coupons	26
Legal Firearms for Hunting Big or Trophy Game.....	26
License Fraud	26
Open Hours for Taking Big Game, Trophy Game and Small Game Animals.....	26
Outfitter Information	27
Permission to Hunt, Fish or Trap.....	27
Precautions When Hunting in Areas Occupied by Grizzly Bears	27
Prohibited Acts.....	27
Regular Hunting Seasons	3-10
Retention of Evidence to Identify Sex, Species and Horn or Antler Development of Big Game Harvested	27
Retrieval of Edible Portions of Game Meat From the Field	28
Retrieval of Edible Portions of Game Meat From the Field - Diagrams	30
Sexing Antelope	29
Shipping Game Animals Out of State	28
Shipping Game Animals Within Wyoming	28
Stop Poaching Program.....	Back Cover
Taking Predatory Animals and Predacious Birds.....	28
Vehicle Restrictions on Federal Land	28
Wilderness Areas	28
Wildlife Damage Management Stamp	28
Wildlife Violator Compact.....	28
Wind River Reservation.....	28

2016 ANTELOPE HUNTING SEASONS

Section 2. Regular Hunting Seasons. Hunt areas, season dates and limitations.

Hunt Area	Type	Season Dates		Quota	License	Limitations
		Opens	Closes			
1	1	Oct. 1	Nov. 20	300	Limited quota	Any antelope
1	6	Oct. 1	Nov. 20	200	Limited quota	Doe or fawn
2	1	Oct. 1	Nov. 20	200	Limited quota	Any antelope
2	6	Oct. 1	Nov. 20	200	Limited quota	Doe or fawn
3	1	Oct. 1	Nov. 20	300	Limited quota	Any antelope
3	6	Oct. 1	Nov. 20	150	Limited quota	Doe or fawn
4	1	Oct. 1	Nov. 20	200	Limited quota	Any antelope
4	6	Oct. 1	Nov. 20	200	Limited quota	Doe or fawn
5	1	Oct. 1	Nov. 20	100	Limited quota	Any antelope
5	6	Oct. 1	Nov. 20	50	Limited quota	Doe or fawn valid on private land
6	1	Oct. 1	Oct. 15	350	Limited quota	Any antelope, also valid in that portion of Area 8 in Weston County
6	6	Oct. 1	Oct. 15	25	Limited quota	Doe or fawn, also valid in that portion of Area 8 in Weston County
7	1	Oct. 1	Oct. 15	450	Limited quota	Any antelope
7	6	Oct. 1	Oct. 15	50	Limited quota	Doe or fawn
7	7	Oct. 25	Nov. 15	50	Limited quota	Doe or fawn valid on private land
8	1	Oct. 1	Oct. 15	375	Limited quota	Any antelope
9	1	Oct. 1	Oct. 31	700	Limited quota	Any antelope, also valid in that portion of Area 11 in Converse or Niobrara counties
9	6	Oct. 1	Oct. 31	650	Limited quota	Doe or fawn also valid in that portion of Area 11 in Converse or Niobrara counties
10	1	Oct. 1	Oct. 14	300	Limited quota	Any antelope
10	6	Oct. 1	Oct. 31	400	Limited quota	Doe or fawn
11	1	Oct. 1	Oct. 31	350	Limited quota	Any antelope
11	6	Oct. 1	Oct. 31	200	Limited quota	Doe or fawn
15	1	Oct. 1	Oct. 14	600	Limited quota	Any antelope
15	6	Oct. 1	Nov. 15	600	Limited quota	Doe or fawn
16	1	Oct. 1	Oct. 14	600	Limited quota	Any antelope
16	6	Oct. 1	Oct. 31	400	Limited quota	Doe or fawn
17	1	Oct. 1	Oct. 31	1100	Limited quota	Any antelope
17	6	Oct. 1	Oct. 31	400	Limited quota	Doe or fawn
18	1	Oct. 1	Oct. 20	150	Limited quota	Any antelope
19	1	Oct. 1	Oct. 20	300	Limited quota	Any antelope
19	6	Oct. 1	Oct. 20	150	Limited quota	Doe or fawn valid on private land
20	1	Oct. 15	Nov. 15	500	Limited quota	Any antelope
20	6	Oct. 15	Nov. 15	500	Limited quota	Doe or fawn
21	1	Oct. 15	Oct. 31	450	Limited quota	Any antelope
21	6	Oct. 15	Oct. 31	300	Limited quota	Doe or fawn
22	1	Oct. 1	Oct. 31	1000	Limited quota	Any antelope

Hunt Area	Type	Season Dates		Quota	License	Limitations
		Opens	Closes			
22	6	Sep. 1	Sep. 30	800	Limited quota	Doe or fawn valid on private land north of Crazy Woman Creek
22	6	Oct. 1	Oct. 31			Doe or fawn valid in the entire area
23	1	Oct. 1	Oct. 31	400	Limited quota	Any antelope
23	2	Oct. 1	Oct. 31	1400	Limited quota	Any antelope valid on private land
23	6	Oct. 1	Oct. 31	300	Limited quota	Doe or fawn
23	7	Oct. 1	Oct. 31	1000	Limited quota	Doe or fawn valid on private land
24	1	Oct. 1	Oct. 31	700	Limited quota	Any antelope
24	6	Oct. 1	Oct. 31	350	Limited quota	Doe or fawn
25	1	Oct. 1	Oct. 14	600	Limited quota	Any antelope
25	6	Oct. 1	Oct. 14	150	Limited quota	Doe or fawn
26	1	Sep. 24	Oct. 14	900	Limited quota	Any antelope
26	6	Sep. 24	Oct. 14	150	Limited quota	Doe or fawn
27	1	Oct. 1	Oct. 15	275	Limited quota	Any antelope
27	7	Oct. 1	Oct. 15	50	Limited quota	Doe or fawn valid on private land
29	1	Oct. 1	Oct. 15	125	Limited quota	Any antelope
29	2	Oct. 1	Oct. 15	500	Limited quota	Any antelope valid off national grasslands
29	6	Oct. 1	Oct. 15	150	Limited quota	Doe or fawn valid off national grasslands
29	7	Oct. 1	Nov. 15	100	Limited quota	Doe or fawn valid south and west of Interstate Highway 25
30	1	Oct. 5	Oct. 31	400	Limited quota	Any antelope
30	6	Oct. 5	Oct. 31	50	Limited quota	Doe or fawn
31	1	Sep. 25	Oct. 31	150	Limited quota	Any antelope
31	6	Sep. 25	Oct. 31	50	Limited quota	Doe or fawn
32	1	Sep. 25	Oct. 31	300	Limited quota	Any antelope
32	6	Sep. 25	Oct. 31	100	Limited quota	Doe or fawn
32	7	Sep. 25	Oct. 31	50	Limited quota	Doe or fawn valid on or within one (1) mile of irrigated land
34	1	Sep. 20	Oct. 14	1000	Limited quota	Any antelope
34	1	Oct. 15	Dec. 31			Doe or fawn
34	6	Sep. 20	Dec. 31	900	Limited quota	Doe or fawn
37	1	Sep. 20	Oct. 14	225	Limited quota	Any antelope
37	6	Sep. 20	Oct. 14	75	Limited quota	Doe or fawn
38	1	Oct. 5	Oct. 31	1250	Limited quota	Any antelope
38	1	Nov. 1	Dec. 31			Doe or fawn
38	6	Oct. 5	Dec. 31	1050	Limited quota	Doe or fawn
42	1	Sep. 25	Oct. 31	400	Limited quota	Any antelope
42	6	Sep. 25	Oct. 31	50	Limited quota	Doe or fawn
43	1	Sep. 15	Oct. 14	400	Limited quota	Any antelope
43	6	Sep. 15	Oct. 14	600	Limited quota	Doe or fawn
44	1	Sep. 15	Oct. 31	150	Limited quota	Any antelope
44	6	Sep. 15	Oct. 31	150	Limited quota	Doe or fawn
45	1	Sep. 15	Oct. 31	350	Limited quota	Any antelope

Hunt Area	Type	Season Dates		Quota	License	Limitations
		Opens	Closes			
45	6	Sep. 15	Oct. 31	350	Limited quota	Doe or fawn
46	1	Sep. 25	Oct. 31	100	Limited quota	Any antelope
46	2	Oct. 5	Oct. 31	150	Limited quota	Any antelope
46	6	Sep. 25	Oct. 31	75	Limited quota	Doe or fawn
47	1	Sep. 25	Oct. 31	400	Limited quota	Any antelope
47	2	Oct. 5	Oct. 31	150	Limited quota	Any antelope
47	6	Sep. 25	Oct. 31	150	Limited quota	Doe or fawn
48	1	Sep. 25	Oct. 31	100	Limited quota	Any antelope
48	2	Oct. 5	Oct. 31	100	Limited quota	Any antelope
48	6	Sep. 25	Oct. 31	50	Limited quota	Doe or fawn
50	1	Sep. 16	Oct. 31	300	Limited quota	Any antelope
50	6	Sep. 16	Oct. 31	25	Limited quota	Doe or fawn
50	0	Sep. 1	Sep. 15	50	Limited quota	Any antelope, muzzle-loading firearms only
51	1	Sep. 16	Nov. 14	50	Limited quota	Any antelope
51	6	Sep. 16	Nov. 14	50	Limited quota	Doe or fawn
52	1	Sep. 16	Oct. 31	150	Limited quota	Any antelope
52	2	Sep. 16	Nov. 14	150	Limited quota	Any antelope valid south of North Spring Creek
52	6	Sep. 16	Oct. 31	150	Limited quota	Doe or fawn
52	7	Sep. 16	Nov. 14	150	Limited quota	Doe or fawn valid south of North Spring Creek
53	1	Sep. 20	Oct. 31	100	Limited quota	Any antelope
53	6	Sep. 20	Oct. 31	100	Limited quota	Doe or fawn
53	7	Sep. 1	Oct. 31	50	Limited quota	Doe or fawn valid on private land within one (1) mile of Wyoming Highway 70 or Carbon County Road 561
55	1	Sep. 20	Oct. 31	150	Limited quota	Any antelope
55	6	Sep. 20	Oct. 31	100	Limited quota	Doe or fawn
56	1	Sep. 20	Oct. 31	50	Limited quota	Any antelope
57	1	Sep. 20	Oct. 31	300	Limited quota	Any antelope
57	2	Sep. 20	Oct. 31	25	Limited quota	Any antelope valid west of Sweetwater County Road 23S and B.L.M. Road 3310, and north and east of B.L.M. Roads 4411 and 4409
57	6	Sep. 20	Oct. 31	100	Limited quota	Doe or fawn
57	7	Sep. 1	Oct. 31	50	Limited quota	Doe or fawn valid on or within one (1) mile of private land south of Carbon County Road 700 and east of Carbon County Road 730
58	1	Sep. 20	Oct. 31	50	Limited quota	Any antelope
59	1	Sep. 20	Oct. 31	250	Limited quota	Any antelope
59	6	Sep. 20	Oct. 31	25	Limited quota	Doe or fawn
60	1	Sep. 17	Oct. 31	50	Limited quota	Any antelope
60	6	Sep. 17	Oct. 31	25	Limited quota	Doe or fawn
61	1	Sep. 10	Oct. 31	100	Limited quota	Any antelope
61	6	Sep. 10	Oct. 31	25	Limited quota	Doe or fawn
62	1	Sep. 10	Oct. 31	40	Limited quota	Any antelope

Hunt Area	Type	Season Dates		Quota	License	Limitations
		Opens	Closes			
62	2	Sep. 10	Oct. 31	100	Limited quota	Any antelope valid east of the Continental Divide and north of Wise Dugout Draw
62	7	Aug. 15	Oct. 31	25	Limited quota	Doe or fawn valid on private land in the Muddy Creek drainage
63	1	Sep. 17	Oct. 31	100	Limited quota	Any antelope
63	2	Sep. 17	Oct. 31	200	Limited quota	Any antelope valid east of the Buzzard Road (Natrona County Road 410-Carbon County Road 497)
63	6	Sep. 17	Oct. 31	25	Limited quota	Doe or fawn
63	7	Sep. 17	Oct. 31	25	Limited quota	Doe or fawn valid east of the Buzzard Road (Natrona County Road 410-Carbon County Road 497)
64	1	Sep. 17	Oct. 31	100	Limited quota	Any antelope
64	6	Sep. 17	Oct. 31	25	Limited quota	Doe or fawn
65	1	Sep. 17	Oct. 22	75	Limited quota	Any antelope
65	6	Sep. 17	Oct. 22	25	Limited quota	Doe or fawn
65	7	Sep. 1	Oct. 31	75	Limited quota	Doe or fawn valid north of the Little Popo Agie River
66	1	Sep. 17	Oct. 22	100	Limited quota	Any antelope
66	6	Sep. 17	Oct. 22	75	Limited quota	Doe or fawn
67	1	Sep. 17	Oct. 22	275	Limited quota	Any antelope
67	6	Sep. 17	Oct. 22	25	Limited quota	Doe or fawn
68	1	Sep. 17	Oct. 22	300	Limited quota	Any antelope
68	6	Sep. 17	Oct. 22	25	Limited quota	Doe or fawn
69	1	Sep. 15	Oct. 31	100	Limited quota	Any antelope
69	6	Sep. 15	Oct. 31	25	Limited quota	Doe or fawn
70	1	Sep. 15	Oct. 31	25	Limited quota	Any antelope
70	2	Sep. 15	Oct. 31	25	Limited quota	Any antelope valid on private land
70	7	Sep. 15	Oct. 31	25	Limited quota	Doe or fawn valid on private land
71	1	Sep. 15	Oct. 31	75	Limited quota	Any antelope
71	6	Sep. 15	Oct. 31	25	Limited quota	Doe or fawn
72	1	Sep. 15	Oct. 31	250	Limited quota	Any antelope
72	6	Sep. 15	Oct. 31	25	Limited quota	Doe or fawn
73	1	Sep. 15	Oct. 31	900	Limited quota	Any antelope
73	6	Sep. 15	Oct. 31	600	Limited quota	Doe or fawn
74	1	Sep. 17	Oct. 22	250	Limited quota	Any antelope
74	6	Sep. 17	Oct. 22	25	Limited quota	Doe or fawn
75	1	Sep. 17	Oct. 22	450	Limited quota	Any antelope
75	6	Sep. 17	Oct. 22	275	Limited quota	Doe or fawn
76	1	Oct. 1	Oct. 31	175	Limited quota	Any antelope
76	2	Aug. 15	Sep. 30	50	Limited quota	Any antelope valid within two (2) miles of the Bighorn River or south of the Buffalo Creek Road (Hot Springs County Road 5)

Hunt Area	Type	Season Opens	Dates Closes	Quota	License	Limitations
76	6	Aug. 15	Oct. 31	150	Limited quota	Doe or fawn valid on or within one-half (1/2) mile of irrigated land or south of the Buffalo Creek Road (Hot Springs County Road 5)
77	1	Sep. 20	Oct. 14	100	Limited quota	Any antelope
77	2	Aug. 15	Sep. 19	25	Limited quota	Any antelope valid on or within one-half (1/2) mile of irrigated land
77	6	Aug. 15	Nov. 15	100	Limited quota	Doe or fawn valid on or within one-half (1/2) mile of irrigated land
78	1	Sep. 20	Oct. 31	125	Limited quota	Any antelope
78	6	Sep. 1	Nov. 30	150	Limited quota	Doe or fawn valid on or within one-half (1/2) mile of irrigated land
79	1	Sep. 20	Sep. 30	15	Limited quota	Any antelope valid on or within one-half (1/2) mile of irrigated land
79	6	Sep. 1	Nov. 30	75	Limited quota	Doe or fawn valid on or within one-half (1/2) mile of irrigated land south of U.S. Highway 14
79	9	Aug. 15	Sep. 30	30	Limited quota	Any antelope, archery only
80	1	Sep. 1	Sep. 30	75	Limited quota	Any antelope
80	6	Sep. 1	Oct. 31	50	Limited quota	Doe or fawn
81	1	Oct. 1	Nov. 15	125	Limited quota	Any antelope
81	6	Oct. 1	Nov. 15	75	Limited quota	Doe or fawn valid west of Wyoming Highway 120
82	1	Sep. 20	Oct. 14	175	Limited quota	Any antelope
82	6	Aug. 15	Oct. 31	50	Limited quota	Doe or fawn valid on or within one-half (1/2) mile of irrigated land east of Wyoming Highway 120
82	7	Sep. 20	Oct. 14	100	Limited quota	Doe or fawn valid west of Wyoming Highway 120
82	8	Oct. 15	Nov. 30	50	Limited quota	Doe or fawn valid in Big Horn County
83	1	Sep. 20	Nov. 7	300	Limited quota	Any antelope
83	6	Aug. 15	Nov. 15	75	Limited quota	Doe or fawn valid on or within one-half (1/2) mile of irrigated land east of Wyoming Highway 120
83	7	Aug. 15	Nov. 15	200	Limited quota	Doe or fawn valid on or within one-half (1/2) mile of irrigated land west of Wyoming Highway 120
84	1	Sep. 17	Oct. 22	100	Limited quota	Any antelope
84	6	Sep. 17	Oct. 22	75	Limited quota	Doe or fawn
85	1	Sep. 10	Oct. 31	20	Limited quota	Any antelope
86	1	Sep. 10	Oct. 31	50	Limited quota	Any antelope
86	6	Sep. 10	Oct. 31	25	Limited quota	Doe or fawn
87	1	Sep. 10	Oct. 31	200	Limited quota	Any antelope
87	2	Sep. 25	Oct. 31	150	Limited quota	Any antelope
87	6	Sep. 10	Oct. 31	150	Limited quota	Doe or fawn

Hunt Area	Type	Season Dates		Quota	License	Limitations
		Opens	Closes			
87	7	Sep. 25	Oct. 31	150	Limited quota	Doe or fawn
88	1	Sep. 10	Oct. 31	300	Limited quota	Any antelope
88	6	Oct. 1	Oct. 31	325	Limited quota	Doe or fawn
89	1	Sep. 10	Oct. 31	200	Limited quota	Any antelope
89	2	Oct. 10	Oct. 31	125	Limited quota	Any antelope
89	6	Oct. 1	Oct. 31	375	Limited quota	Doe or fawn
89	6	Nov. 1	Nov. 15			Doe or fawn valid south of Middle Piney Creek and south of Wyoming Highway 351
90	1	Sep. 10	Oct. 31	225	Limited quota	Any antelope valid east of U.S. Highway 191
90	2	Sep. 10	Oct. 31	150	Limited quota	Any antelope east of U.S. Highway 191
90	6	Sep. 10	Oct. 31	150	Limited quota	Doe or fawn valid each of U.S. Highway 191
90	8	Aug. 15	Sep. 9	50	Limited quota	Doe or fawn valid on private land east of U.S. Highway 191
91	1	Sep. 10	Oct. 31	350	Limited quota	Any antelope
91	6	Sep. 10	Oct. 31	200	Limited quota	Doe or fawn
91	7	Aug. 15	Oct. 31	75	Limited quota	Doe or fawn valid on private land and Bureau of Reclamation land within Sweetwater County
92, 96	1	Sep. 10	Oct. 31	125	Limited quota	Any antelope
92, 96	7	Sep. 10	Oct. 31	50	Limited quota	Doe or fawn valid within the Farson-Eden Irrigation Project
93	1	Sep. 10	Oct. 31	500	Limited quota	Any antelope
93	6	Sep. 10	Oct. 31	25	Limited quota	Doe or fawn
93	7	Sep. 10	Oct. 31	200	Limited quota	Doe or fawn valid north and west of Wyoming Highway 189
93	8	Oct. 1	Nov. 30	100	Limited quota	Doe or fawn valid on irrigated land north and west of Wyoming Highway 189
94	1	Sep. 10	Oct. 31	500	Limited quota	Any antelope
94	6	Sep. 10	Oct. 31	250	Limited quota	Doe or fawn
94	7	Sep. 10	Oct. 31	200	Limited quota	Doe or fawn valid on or within one (1) mile of irrigated land
95	1	Sep. 10	Oct. 31	325	Limited quota	Any antelope
95	7	Aug. 15	Oct. 31	200	Limited quota	Doe or fawn valid on irrigated land
97, 117	1	Sep. 17	Oct. 22	300	Limited quota	Any antelope
97, 117	2	Aug. 15	Oct. 22	25	Limited quota	Any antelope valid in Area 97 south of U.S. Highway 26 and in all of Area 117
97, 117	6	Sep. 17	Oct. 22	150	Limited quota	Doe or fawn
97, 117	7	Aug. 15	Oct. 22	50	Limited quota	Doe or fawn valid in Area 97 south of U.S. Highway 26 and in all of Area 117
98	1	Sep. 10	Oct. 31	200	Limited quota	Any antelope

Hunt Area	Type	Season Opens	Dates Closes	Quota	License	Limitations
98	6	Sep. 10	Oct. 31	200	Limited quota	Doe or fawn
99	1	Sep. 10	Oct. 31	225	Limited quota	Any antelope
99	6	Sep. 10	Oct. 31	100	Limited quota	Doe or fawn
99	7	Sep. 10	Nov. 30	200	Limited quota	Doe or fawn valid north and west of Wyoming Highway 410 and west of Uinta County Road 271
99	0	Sep. 1	Oct. 31	50	Limited quota	Any antelope, muzzle-loading firearms only
100	1	Sep. 10	Oct. 31	200	Limited quota	Any antelope
100	6	Sep. 10	Oct. 31	225	Limited quota	Doe or fawn
100	7	Sep. 10	Oct. 31	25	Limited quota	Doe or fawn valid west of the Bear River Divide
102	1	Oct. 15	Nov. 15	400	Limited quota	Any antelope
102	6	Sep. 1	Sep. 30	400	Limited quota	Doe or fawn valid on private land
102	6	Oct. 15	Nov. 15			Doe or fawn valid in the entire area
103	1	Oct. 5	Oct. 31	475	Limited quota	Any antelope
103	6	Oct. 5	Dec. 31	450	Limited quota	Doe or fawn
106	1	Sep. 17	Oct. 22	75	Limited quota	Any antelope
106	6	Sep. 17	Oct. 22	25	Limited quota	Doe or fawn
107	1	Sep. 10	Oct. 22	50	Limited quota	Any antelope
107	6	Sep. 10	Oct. 22	50	Limited quota	Doe or fawn
107	0	Aug. 20	Sep. 9	50	Limited quota	Any antelope, muzzle-loading firearms and handguns only
108	1	Sep. 20	Oct. 31	150	Limited quota	Any antelope
108	6	Sep. 20	Oct. 31	100	Limited quota	Doe or fawn
108	7	Sep. 20	Nov. 30	100	Limited quota	Doe or fawn valid south of the Bridger Pass Road (B.L.M. Road 3301), east of the Continental Divide and north of the Miller Hill Road (Carbon County Road 505W)
109	1	Sep. 15	Nov. 30	350	Limited quota	Any antelope
109	6	Sep. 15	Nov. 30	350	Limited quota	Doe or fawn
110	1	Sep. 20	Oct. 14	75	Limited quota	Any antelope
110	6	Sep. 20	Oct. 14	25	Limited quota	Doe or fawn
111	1	Sep. 20	Oct. 14	100	Limited quota	Any antelope
111	1	Nov. 15	Dec. 31			Doe or fawn
111	6	Sep. 20	Oct. 14	50	Limited quota	Doe or fawn
111	6	Nov. 15	Dec. 31			Doe or fawn
112	1	Sep. 20	Oct. 31	100	Limited quota	Any antelope
112	6	Sep. 20	Oct. 31	25	Limited quota	Doe or fawn
113	1	Oct. 1	Oct. 31	150	Limited quota	Any antelope
113	2	Oct. 11	Oct. 31	150	Limited quota	Any antelope
113	6	Oct. 1	Oct. 31	200	Limited quota	Doe or fawn
114	1	Oct. 1	Oct. 31	50	Limited quota	Any antelope
114	2	Aug. 15	Sep. 30	25	Limited quota	Any antelope valid on or within one-half (1/2) mile of irrigated land

Hunt Area	Type	Season Dates		Quota	License	Limitations
		Opens	Closes			
114	6	Aug. 15	Oct. 24	100	Limited quota	Doe or fawn valid on or within one-half (1/2) mile of irrigated land
114	7	Oct. 25	Nov. 30	100	Limited quota	Doe or fawn valid on or within one-half (1/2) mile of irrigated land
115	1	Oct. 1	Oct. 31	200	Limited quota	Any antelope
115	6	Sep. 1	Nov. 30	300	Limited quota	Doe or fawn valid east of the Nowood River or south and west of Cornell Gulch or Nowater Stock Trail (B.L.M. Road 1404)

Section 3. Special Archery Seasons. Hunt areas listed in this Section shall have Special Archery Hunting Seasons starting on the dates as specified in this Section. Special Archery Seasons close when the earliest any antelope season for the hunt area opens as listed in Section 2 of this Chapter. Archers shall possess a limited quota antelope license in addition to an archery license in order to hunt antelope during any Special Archery Season.

Archers shall only hunt in the hunt area(s) and for the sex of antelope set forth by the limitations of their license as specified in Section 2 of this Chapter.

Special Archery Seasons Hunt Areas	Opening Date	Limitations
1-5, 17	Sep. 1	Refer to Section 2 of this Chapter
6-11, 15, 16, 18-27, 29-32, 34, 37, 38, 42-48, 50-53, 55-78, 80-100, 102, 103, 106-115, 117	Aug. 15	Refer to Section 2 of this Chapter

Note: Type 9 antelope licenses are valid for archery only and do not require a separate archery license.

Section 4. Disabled Hunter Season Extension.

(a) Any person qualified for and in possession of a Disabled Hunter Permit issued by the Department in accordance with Commission regulation, may hunt antelope five (5) days prior to the earliest opening date in the hunt area(s) and for the sex of antelope set forth by the limitations of their license type as specified in Section 2 of this Chapter.

(b) Hunters participating in a disabled hunter season extension shall be in possession of a Disabled Hunter Permit which shall be immediately produced for inspection upon request of an officer authorized to enforce this regulation.

Section 5. Hunt Area Descriptions.

Area 1. Crook. Beginning where Wyoming Highway 112 crosses the Wyoming-Montana state line; southwesterly along said highway to Wyoming Highway 24 in the town of Hulett; southerly along said highway to U.S. Highway 14; westerly along said highway to the Cabin Creek Road (Crook County Road 116); northwesterly along said road to the Oshoto Road (Crook County Road 263); westerly along said road to the "D" Road (Crook County Road 68); northerly along said road to the Rocky Point Road in Campbell County (Campbell County Road 85); northerly along said road to the Wyoming-Montana state line; easterly along said line to Wyoming Highway 112.

Area 2. Bearlodge. Beginning where Wyoming Highway 112 crosses the Wyoming-Montana state line; easterly along said line to the Wyoming-South Dakota state line; southerly along said line to Interstate Highway 90; westerly along said Interstate Highway to the town of Sundance and U.S. Highway 14; northwesterly along said highway to Wyoming Highway 24; northerly along said highway to Wyoming Highway 112 in the town of Hulett; northeasterly along said highway to the Wyoming-Montana state line.

Area 3. Keyhole. Beginning where Interstate Highway 90 intersects U.S. Highway 14 in the town of Sundance; southerly and westerly along Interstate Highway 90 to its intersection with the "D" Road (Crook County Road 68); northerly along said road to the Oshoto Road (Crook County Road 263); easterly along said road to the Cabin Creek Road (Crook County Road 116); southerly and easterly along said road to U.S. Highway 14; easterly and southerly along said highway to Interstate Highway 90 in the town of Sundance.

Area 4. Arch Creek. Beginning in the town of Upton at the junction of U.S. Highway 16 and Wyoming Highway 116; westerly and northerly along U.S. Highway 16 to Interstate Highway 90 at the town of Moorcroft; easterly along said Interstate Highway to the town of Sundance and Wyoming Highway 116; southerly and westerly along said highway to its junction with U.S. Highway 16 in the town of Upton.

Area 5. Inyan Kara. Beginning where Interstate Highway 90 crosses the Wyoming-South Dakota state line; southerly along said line to U.S. Highway 16; northerly and westerly along said highway to Wyoming Highway 116 in the town of Upton; northerly and easterly along said highway to the town of Sundance and Interstate Highway 90; easterly along said Interstate Highway to the Wyoming-South Dakota state line.

Area 6. South Newcastle. Beginning where U.S. Highway 16 intersects the Wyoming-South Dakota state line; southerly along said line to the Dewey Road (Weston County Road 2); northwesterly along said road to U.S. Highway 85; southerly along said highway to Cheyenne River Road (Weston County Road 54); westerly along said road to the Lynch Road (Weston County Road 7A); northerly along said road to Wyoming Highway 450; northeasterly along said highway to U.S. Highway 16; southeasterly along said highway to the Wyoming-South Dakota state line.

Area 7. South Upton. Beginning where Wyoming Highway 450 intersects U.S. Highway 16; southwestly along Wyoming Highway 450 to the Keeline Road (U.S.F.S. Road 930); northwesterly along said road to Black Thunder Creek; easterly down said creek to Bacon Creek; northerly up said creek to Newel Prong; northerly up said prong to the divide between the Cheyenne River and Belle Fourche River; northeasterly along said divide to the divide between Four Horse Creek and Raven Creek; northwesterly along said divide to the Belle Fourche River; northeasterly down said river to Interstate Highway 90; easterly along said highway to U.S. Highway 16; southeasterly along said highway to Wyoming Highway 450.

Area 8. Niobrara. Beginning where the Boner Road (Niobrara County Road 18) crosses the Wyoming-South Dakota state line; westerly along said road to U.S. Highway 85; southerly along said highway to Wyoming Highway 270; westerly along said highway to Wyoming Highway 272; northerly along said highway to the North Lance Creek Road (Niobrara County Road 14); northerly and westerly along said road to the Niobrara-Converse county line and the Dull Center Road (Converse County Road 38); westerly along said road to the Clareton Road (Converse County Road 39); northerly along said road to the Niobrara-Weston county line and the Lynch Road (Weston County Road 7A); northerly along said road to the Cheyenne River Road (Weston County Road 54); easterly along said road to U.S. Highway 85; northerly along said highway to the Dewey Road (Weston County Road 2); easterly along said road to the Wyoming-South Dakota state line; southerly along said line to the Boner Road (Niobrara County Road 18).

Area 9. Lance Creek. Beginning where U.S. Highway 20 crosses the Wyoming-Nebraska state line; westerly along said highway to the Twenty Mile Creek Road (Converse County Road 46) at Lost Springs; northerly along said road to the Manning Road (Converse County Road 53); easterly along said road to the Converse-Niobrara county line and the Twenty Mile Road (Niobrara County Road 23); easterly along said road to Wyoming Highway 271; easterly along said highway to the town of Lance Creek and Wyoming Highway 270; northerly and easterly along said highway to U.S. Highway 85; northerly along said highway to the Boner Road (Niobrara County Road 18); easterly along said road to the Wyoming-South Dakota state line; southerly along said line to the Wyoming-Nebraska state line; southerly along said line to U.S. Highway 20.

Area 10. Lake De Smet. Beginning at the junction of U.S. Highways 14 and 16 at Ucross; southerly along U.S. Highway 16 to Interstate Highway 90; northwesterly along said highway to U.S. Highway 14; southeasterly along said highway to U.S. Highway 16 at Ucross.

Area 11. Rawhide Butte. Beginning where U.S. Highway 20 intersects the Wyoming-Nebraska state line; southerly along said line to the North Platte River; northwesterly up said river to Glendo Dam; northerly along the eastern shore of Glendo Reservoir to the North Platte River; northwesterly up said river to Interstate Highway 25; northerly along said highway to U.S. Highway 20 at the Orin Junction; easterly along said highway to the Wyoming-Nebraska state line.

Area 15. Clearmont. Beginning where the Powder River crosses the Wyoming-Montana state line; southerly up said river to U.S. Highway 14; westerly along said highway to Interstate Highway 90; northwesterly along said highway to the Wyoming-Montana state line; easterly along said line to the Powder River.

Area 16. Ucross. Beginning where U.S. Highway 14 crosses the Powder River; southerly up said river to Interstate Highway 90; northwesterly along said highway to U.S. Highway 16; northeasterly along said highway to U.S. Highway 14; easterly along said highway to the Powder River.

Area 17. Gillette. Beginning where Wyoming Highway 59 crosses the Wyoming-Montana state line; southerly along said highway to U.S. Highway 14-16; southerly along said highway to Interstate Highway 90 west of the town of Gillette; westerly along said highway to the Powder River; northerly down said river to the Wyoming-Montana state line; easterly along said line to Wyoming Highway 59.

Area 18. Rockypoint. Beginning where the Rocky Point Road crosses the Wyoming-Montana state line; southerly along said road to the "D" Road; southerly along said road to Cabin Creek; westerly up said creek to the Cabin-Mitchell Creek hydrographic divide; westerly along said divide to Mitchell Creek; westerly down said creek to the Spring Creek Road north of Adon; southerly and westerly along said road to the Cow Creek Road; westerly along said road to Wyoming Highway 59; northerly along said highway to the Wyoming-Montana state line; easterly along said line to the Rocky Point Road.

Area 19. Rozet. Beginning where the "D" Road crosses Cabin Creek; southerly along said road to Interstate Highway 90; westerly along said highway to U.S. Highway 14-16 west of the city of Gillette; northerly along said highway to Wyoming Highway 59; northerly along said highway to the Cow Creek Road; easterly along said road to the Spring Creek Road north of Adon; northeasterly along said road to Mitchell Creek; easterly up said creek to the Mitchell Creek-Cabin Creek hydrographic divide; easterly along said divide to Cabin Creek; easterly down said creek to the "D" Road.

Area 20. Upper Powder River. Beginning at the junction of the Trabing Road (Johnson County Road 13) and Interstate Highway 25; southerly along said highway to Wyoming Highway 191; westerly along said highway to Wyoming Highway 190; southerly along said highway to the town of Barnum and the Barnum Mountain Road; westerly along said road to the Hazelton Road (Washakie County Road 81-Johnson County Road 3); northerly along said road to the Gold Mine Road (U.S.F.S. Road 452); northerly along said road to the Canyon Creek Road (U.S.F.S. Road 25); northerly along said road to U.S. Highway 16; easterly along said highway to the Crazy Woman Canyon Road (Johnson County Road 14); easterly along said road to Wyoming

Highway 196; northerly along said highway to the Trabing Road (Johnson County Road 13); easterly along said road to Interstate Highway 25.

Area 21. Middle Fork. Beginning at the town of Kaycee and Interstate Highway 25; southeasterly along said highway to the Midwest interchange and the Smoky Gap Road (Natrona County Road 115); westerly along said road to the Dead Horse Road (Natrona County Road 114); southwesterly along said road to the Wild Horse Trail (Natrona County Road 113); westerly along said road to the 33 Mile Road (Natrona County Road 110); northwesterly along said road to the Hazelton Road (Washakie County Road 81); northerly along said road to the Barnum Mountain Road; easterly along said road to the town of Barnum and Wyoming Highway 190; northeasterly along said highway to Wyoming Highway 191; easterly along said highway to Interstate Highway 25.

Area 22. Crazy Woman. Beginning where Interstate Highway 90 crosses the Powder River; southerly up said river to Wyoming Highway 192; westerly along said highway to Interstate Highway 25; northerly along said highway to Interstate Highway 90; southeasterly along said highway to the Powder River.

Area 23. Pumpkin Buttes. Beginning at the junction of U.S. Highway 14-16 and Wyoming Highway 59 at the city of Gillette; southerly along Wyoming Highway 59 to Wyoming Highway 387 at Reno Junction; southwesterly along Wyoming Highway 387 to Wyoming Highway 192; northwesterly along said highway to the Powder River at Sussex; northerly down said river to Interstate Highway 90; easterly along said highway to U.S. Highway 14-16 at the city of Gillette; easterly along said highway to Wyoming Highway 59.

Area 24. Thunder Basin. Beginning where Interstate Highway 90 crosses the Belle Fourche River; southwesterly up said river to the divide between Four Horse Creek and Raven Creek; southeasterly along said divide to the divide between the Cheyenne River and Belle Fourche River Divide; southwesterly along said divide to Newel Prong; southerly down said prong to Bacon Creek; southerly down said creek to Black Thunder Creek; westerly up said creek to the Keeline Road (U.S.F.S. Road 930); southeasterly along said road to Wyoming Highway 450; westerly along said highway to Wyoming Highway 59; northerly along said highway to Interstate Highway 90; easterly along said highway to the Belle Fourche River.

Area 25. Ormsby. Beginning where Wyoming Highway 259 intersects Wyoming Highway 387 at the town of Midwest; northeasterly along Wyoming Highway 387 to the top of Pine Ridge; southerly along the top of Pine Ridge to Blue Hill and the head of the West Fork of Sand Creek; southeasterly down said creek to Sand Creek; southeasterly along said creek to the 55 Ranch Road (Converse County Road 23); southerly along said road to Wyoming Highway 95; southwesterly along said highway to the North Platte River; westerly up said river to Interstate Highway 25 in the city of Casper; northerly along said highway to Wyoming Highway 259; easterly along said highway to Wyoming Highway 387 at the town of Midwest.

Area 26. Bear Creek. Beginning where Wyoming Highway 387 intersects Wyoming Highway 59 at Reno Junction; southerly along Wyoming Highway 59 to the North Platte River at the town of Douglas; westerly up said river to Wyoming Highway 95; northeasterly along said highway to the 55 Ranch Road (Converse County Road 23); northerly up said road to Sand Creek; northwesterly up said creek to the West Fork of Sand Creek; northwesterly up said creek to the top of Pine Ridge at Blue Hill; northerly along the top of Pine Ridge to Wyoming Highway 387; northeasterly along said highway to Wyoming Highway 59 at Reno Junction.

Area 27. Bill. Beginning at the junction of Wyoming Highways 59 and 450; easterly along Wyoming Highway 450 to the Lynch Road (Weston County Road 7A); southerly along said road to the Weston-Converse county line and the Clareton Road (Converse County Road 39); southerly along said road to the Dull Center Road (Converse County Road 38); westerly along said road to the Rochelle Hills Road (U.S.F.S. Road 933); northerly along said road to the Cheyenne River; westerly up said river to its confluence with Antelope Creek and the Dry Fork of the Cheyenne River; southwesterly up the Dry Fork of the Cheyenne River to Wyoming Highway 59; northerly along said highway to the junction of Wyoming Highways 59 and 450.

Area 29. Shawnee. Beginning where Interstate Highway 25 crosses the North Platte River immediately south of Orin Junction; westerly and northerly up said river to Wyoming Highway 59 at the town of Douglas; northerly along said highway to the Dry Fork of the Cheyenne River; northeasterly down said fork to its confluence with Antelope Creek and the Cheyenne River; easterly down the Cheyenne River to the Rochelle Hills Road (U.S.F.S. Road 933); southerly along said road to the Dull Center Road (Converse County Road 38); easterly along said road to the Converse-Niobrara county line and the North Lance Creek Road (Niobrara County Road 14); easterly and southerly along said road to Wyoming Highway 272; southerly along said highway to Wyoming Highway 270; southwesterly along said highway to the town of Lance Creek and Wyoming Highway 271; westerly along said highway to the Twenty Mile Road (Niobrara County Road 23); westerly along said road to the Converse-Niobrara County line and the Manning Road (Converse County Road 46); southerly along said road to the Twenty Mile Creek Road (Converse County Road 46); southerly along said road to U.S. Highway 18-20 at the town of Lost Springs; westerly along said highway to Interstate Highway 25 at Orin Junction; southerly along said highway to the North Platte River.

Area 30. LaPrele. Beginning at the confluence of Deer Creek and the North Platte River at the town of Glenrock; easterly and southerly down said river to the Jackalope Warm Springs and the Esterbrook Highway (Wyoming Highway 94); southerly along said highway to the Esterbrook Road (Converse County Road 5); southerly along said road to the town of Esterbrook and U.S.F.S. Road 633; easterly and southerly along said road to the divide between Soldier Creek and Horseshoe Creek; southerly along said divide to the divide between Horseshoe Creek and the North Laramie River; westerly and northerly along said divide to Blacktail Peak and the head of South Fork Creek tributary to LaBonte Creek; northerly down said creek to U.S.F.S. Road 658; westerly along said road to the Old Fort Fetterman Road (Converse County Road 16); northerly along said road to the divide between Corduroy Creek and Rocky Ford Creek; westerly along said divide to the divide between LaPrele Creek and the Little Medicine Bow River; westerly along said divide to the Converse-Albany county line; westerly along said line to the Little Medicine Road (Albany County Road 62); southwesterly along said road to U.S.F.S. Road 660; northwesterly along said road to Curry Creek; northwesterly down said creek to Deer Creek; northerly down said creek to the North Platte River at the town of Glenrock.

Area 31. Hat Six. Beginning where the Casper city limits intersect Wyoming Highway 251 (Casper Mountain Road); easterly and northerly along said city limits to the North Platte River; easterly down said river to Deer Creek at the town of Glenrock; southerly along said creek to Sawmill Creek; southerly and westerly up said creek to the top of Reno Hill and the divide between Soldier Creek and the West Fork of Deer Creek; westerly along said divide to the divide between the East Fork of Bates Creek and the West Fork of Deer Creek; westerly along said divide to the divide between Kerfoot Creek and the West Fork of Deer Creek; westerly along said divide to the divide between the West Fork of Deer Creek, Kerfoot Creek and Smith Creek; northerly and westerly along said divide to the head of Smith Creek; northerly across Muddy Mountain along the divide of Corral Creek and Otter Creek to the divide between Red Creek and the Clear Fork of Muddy Creek; northerly along said divide to the Circle Drive Road (Natrona County Road 505); northerly along said road to Wyoming Highway 251; northerly along said highway to the Casper city limits.

Area 32. Bates Creek. Beginning where the Pathfinder Dam crosses the North Platte River; easterly and northerly down said river to the Casper city limits; southerly and easterly along said limits to Wyoming Highway 251 (Casper Mountain Road); southerly along said road to the Circle Drive Road (Natrona County Road 505); southerly along said road to the divide between Red Creek and the Clear Fork of Muddy Creek; southerly along said divide to the divide between Corral Creek and Otter Creek; southerly across Muddy Mountain along said divide to the head of Smith Creek; southerly and easterly to the divide between Smith Creek, Kerfoot Creek and the West Fork of Deer Creek; easterly along said divide to the divide between Kerfoot Creek and the West Fork of Deer Creek; easterly along said divide to the divide between Spruce Creek and the West Fork of Deer Creek; easterly along said divide to the divide between the East Fork of Bates Creek and West Fork of Deer Creek; easterly along said divide to the divide between Soldier Creek and the West Fork of Deer Creek; easterly along said divide to Reno Hill and the head of Sawmill Creek; easterly and northerly down said creek to Deer Creek; southerly up said creek to Curry Creek; southeasterly up said creek to U.S.F.S. Road 660; westerly along said road to its termination at the Squaw Springs Trail Road; southwesterly along said road to the Bates Creek Road (Natrona County Road 402); southwesterly along said road to the Spring Creek Road; westerly along said road to the Lone Tree Road (B.L.M. Road 3141); southerly along said road to the Shirley Ridge Road (Carbon County Road 2); southwesterly along said road to Wyoming Highway 77; southerly along said highway to the Chalk Mountain Road (B.L.M. Road 3129); westerly and northerly along said road to the Dry Creek Road (Carbon County Road 103); northwesterly along said road to the south fork of Canyon Creek; westerly and northerly down said fork to Canyon Creek; westerly down said creek to the east shore of Pathfinder Reservoir; northeasterly along said east shore to the Pathfinder Dam and the North Platte River.

Area 34. Goshen Hole. Beginning where Interstate Highway 25 crosses the Laramie River; northeasterly down said river to the North Platte River; southerly down said river to the Wyoming-Nebraska state line; southerly along said line to Interstate Highway 80; westerly along said highway to Interstate Highway 25; northeasterly along said highway to the Laramie River.

Area 37. Harriman. Beginning at the city of Laramie and Interstate Highway 80; southeasterly along said highway to Interstate Highway 25 at the city of Cheyenne; southerly along said highway to the Wyoming-Colorado state line; west along said line to U.S. Highway 287; northerly along said highway to Interstate Highway 80.

Area 38. Iron Mountain. Beginning in the city of Laramie and U.S. Highway 30; northerly along said highway to where U.S. Highway 30 crosses the Laramie River; northeasterly down said river to Interstate Highway 25; southerly along said highway to Interstate Highway 80; westerly along said highway to the city of Laramie.

Area 42. Laramie Plains. Beginning at the junction of the Marshall Road (Albany County Road 610) and U.S. Highway 30 north of the town of Rock River; northeasterly along said road to the second crossing of Sheep Creek; northerly up said creek to the southern boundary of the Laramie Peak Division of the Medicine Bow National Forest; northwesterly along said boundary to the Albany-Converse county line; east along said line to LaPrele Creek; southerly up said creek to the divide between LaPrele Creek and the Little Medicine Bow River; easterly along said divide to the divide between Corduroy Creek and Rocky Ford Creek; easterly along said divide to the Fetterman Road (Albany County Road 61); southerly along said road to U.S.F.S. Road 658; easterly along said road to South Fork Creek tributary to LaBonte Creek; southerly up said creek to the divide between Horseshoe Creek and the North Laramie River; southeasterly along said divide to the head of Friend Creek; southerly down said creek to Bear Creek; easterly down said creek to the North Laramie River; easterly down said river to the Cottonwood Park Road (Albany County Road 71); southerly down said road to its junction with Palmer Canyon Road (Albany County Road 721); easterly along said road to Ashley Creek; southerly down said creek to Duck Creek; easterly down said creek to the Big Laramie River; southwesterly up said river to U.S. Highway 30; northwesterly along said highway to the Marshall Road (Albany County Road 610).

Area 43. Cooper Lake. Beginning at the junction of Wyoming Highway 13 and U.S. Highway 30 north of the town of Rock River; southeasterly along U.S. Highway 30 to Interstate Highway 80; northwesterly along said highway to Rock Creek; northeasterly down said creek to Wyoming Highway 13 west of the town of McFadden; northeasterly along said highway to U.S. Highway 30.

Area 44. South Laramie. Beginning at the city of Laramie and U.S. Highway 287; southerly along said highway to the Wyoming-Colorado state line; west along said line to Wyoming Highway 230; northeasterly along said highway to U.S. Highway 287.

Area 45. West Laramie. Beginning at the city of Laramie and Wyoming Highway 230; southwesterly along said highway to the divide between the Laramie River and the North Platte River; northerly along said divide to the divide between the Medicine Bow River and the Laramie River at Medicine Bow Peak; northeasterly along said divide to Deep Creek; northeasterly down said creek to Rock Creek; northeasterly down said creek to Interstate Highway 80 at Arlington; southeasterly along said highway to Wyoming Highway 230.

Area 46. Kyle. Beginning where U.S. Highway 30 intersects Wyoming Highway 72; easterly along U.S. Highway 30 to Wyoming Highway 13; southwesterly along said highway to Rock Creek west of the town of McFadden; southwesterly up said creek to Interstate Highway 80; northwesterly along said highway to Wyoming Highway 72; northerly along said highway to U.S. Highway 30.

Area 47. Shirley Basin. Beginning at U.S. Highway 30 in the town of Medicine Bow; westerly along said highway to Wyoming Highway 72; northerly along said highway to the Hanna-Leo Road (Carbon County Road 291); northerly along said road to Troublesome Creek; northerly up said creek to the Troublesome Spring Road on Shirley Mountain; northerly along said road to the B.L.M. Fire Camp Road (B.L.M. Road 3115); northwesterly along said road to the Leo-Shirley Basin Road (Carbon County Road 102) at Pryor Flat; northeasterly along said road to the Dry Creek Road (Carbon County Road 103); northerly along said road to the Chalk Mountain Road (B.L.M. Road 3129); easterly along said road to Wyoming Highway 77; northerly along said highway to the Shirley Ridge Road (Carbon County Road 2), northeasterly along said road to the Lone Tree Road (B.L.M. Road 3141); northerly along said road to the Spring Creek Road; easterly along said road to the Bates Creek Road (Natrona County Road 402); northeasterly along said road to the Squaw Springs Trail Road; northerly along said road to U.S.F.S. Road 660; southeasterly along said road to the Little Medicine Road (Albany County Road 62); northeasterly along said road to the south boundary of the Laramie Peak Division of the Medicine Bow Forest; southerly and easterly along said boundary to Sheep Creek; southerly along said creek to its second crossing with the Marshall Road (Albany County Road 610); southerly along said road to U.S. Highway 30; westerly along said highway to the town of Medicine Bow.

Area 48. Leo-Hanna. Beginning at the junction of Wyoming Highway 72 and Interstate Highway 80; westerly along Interstate Highway 80 to the North Platte River; northerly down said river to Canyon Creek; easterly up said creek to the south fork of Canyon Creek; southerly and easterly up said fork to the Dry Creek Road (Carbon County Road 103); southerly along said road to the Leo-Shirley Basin Road (Carbon County Road 102); southwestwesterly along said road to Pryor Flat and the B.L.M. Fire Camp Road (B.L.M. Road 3115); southeasterly along said road to the Troublesome Spring Road; southerly along said road to Troublesome Creek; southerly along said creek to the Hanna-Leo Road (Carbon County Road 291); southerly along said road to the town of Hanna and Wyoming Highway 72; southerly along said highway to Interstate Highway 80.

Area 50. Elk Mountain. Beginning where Interstate Highway 80 crosses the North Platte River; easterly along said highway to Rock Creek at Arlington; southerly up said creek to Deep Creek; southwestwesterly up said creek to the divide between the Laramie River and the North Platte River; southerly along said divide to Wyoming Highway 230; southwestwesterly along said highway to the Wyoming-Colorado state line; west along said line to the North Platte River; northerly down said river to Interstate Highway 80.

Area 51. Big Creek. Beginning where the North Platte River crosses the Wyoming-Colorado state line; west along said line to the Encampment River; northeasterly down said river to the North Platte River; southerly up said river to the Wyoming-Colorado state line.

Area 52. Spring Creek. Beginning where the Continental Divide crosses the Wyoming-Colorado state line; northerly along said divide to the Sage Creek Road (Carbon County Road 401); northerly along said road to Sage Creek; northeasterly down said creek to the North Platte River; southerly up said river to the Encampment River; southwestwesterly up said river to the Wyoming-Colorado state line; westerly along said line to the Continental Divide.

Area 53. Baggs. Beginning at the junction of Wyoming Highway 789 and the Wyoming-Colorado state line; northerly along said highway to Muddy Creek north of Dad; easterly up said creek to the Muddy Creek Road (B.L.M. Road 3306); easterly along said road to the Miller Hill Road (B.L.M. Road 3328); southeasterly along said road to the McCarty Canyon Road (Carbon County Road 503); northeasterly along said road to the Sage Creek Road (Carbon County Road 401); southerly along said road to the Continental Divide at Middlewood Hill; southerly along said divide to the Wyoming-Colorado state line; westerly along said line to Wyoming Highway 789.

Area 55. Red Rim. Beginning where Wyoming Highway 71 crosses Interstate Highway 80 at the city of Rawlins; southerly along said highway to the divide along Five Mile Ridge; southwestwesterly along the divide on Five Mile Ridge and Atlantic Rim to the crossing of the Sulphur Springs Ranch Road over Muddy Creek; westerly down said creek to Wyoming Highway 789; northerly along said highway to Interstate Highway 80; easterly along said Interstate to Wyoming Highway 71.

Area 56. Iron Springs. Beginning where Wyoming Highway 71 crosses Interstate Highway 80 at the city of Rawlins; easterly along said Interstate to the North Platte River; southerly up said river to Sage Creek; southwestwesterly up said creek to the Sage Creek Road (Carbon County Road 401); northerly along said road to Wyoming Highway 71; northerly along said highway to Interstate Highway 80.

Area 57. South Wamsutter. Beginning at the junction of Wyoming Highway 789 and the Wyoming-Colorado state line; westerly along said line to the Cow Creek-Powder Wash Road north of Powder Wash, Colorado; northwesterly along said road to the Bitter Creek Road (Sweetwater County Road 19); northwesterly along said road to Interstate Highway 80; easterly along said highway to Creston Junction and Wyoming Highway 789; southerly along said highway to the Wyoming-Colorado state line.

Area 58. Black Butte-Kenny Rim. Beginning at the junction of Wyoming Highway 430 and the Wyoming-Colorado state line; northwesterly along said highway to Interstate Highway 80 in the town of Rock Springs; easterly along said highway to the Bitter Creek Road (Sweetwater County Road 19); southeasterly along said road to the Carson Springs Junction and the Cow Creek-Powder Wash Road; southeasterly along said road to the Wyoming-Colorado state line; westerly along said line to Wyoming Highway 430.

Area 59. Aspen Mountain. Beginning where Interstate Highway 80 crosses the Green River; easterly along said highway to the town of Rock Springs and Wyoming Highway 430; southeasterly along said highway to the Mud Springs Road (Sweetwater County Road 32); westerly along said road to the Aspen Mountain Road (Sweetwater County Road 27); southerly along said road to the Clay Basin Pipeline Road (Sweetwater County Road 71); southwestwesterly along said road to the Ramsey Ranch Road (Sweetwater County Road 34); westerly along said road to U.S. Highway 191; westerly along said highway to the Ramsey Ranch Road (Sweetwater County Road 34); northerly along said road to the Sage Creek Road (Sweetwater County Road 36);

westerly along said road to Sage Creek; westerly down said creek to Flaming Gorge Reservoir; northerly along the east shore of said reservoir to the Green River; northeasterly then northwesterly up said river to Interstate Highway 80.

Area 60. Table Rock. Beginning at the junction of Wamsutter-Crooks Gap Road (Sweetwater County Road 23) and Interstate Highway 80 at the town of Wamsutter; westerly along said highway to Wyoming Highway 377 at Point of Rocks; northerly along said highway to the Nine Mile Road (Sweetwater County Road 15); northerly along said road to the Bar X Road (Sweetwater County Road 21) at the Bar X Ranch; northwesterly along said road to the Oregon Buttes Road (Sweetwater County Road 74); northerly along said road to the Continental Divide Road; northeasterly along said road to the Sand Creek Road; southeasterly along said road to the Red Creek Road (B.L.M. Road 3219); southeasterly along said road to the Cyclone Rim Road (B.L.M. Road 3216); easterly along said road to the Bison Basin Road (B.L.M. Road 3221); southerly along said road to the Hadsell Road (B.L.M. Road 3217); easterly along said road to the Osborne Road (B.L.M. Road 3212); easterly along said road to the Wamsutter-Crooks Gap Road (Sweetwater County Road 23); southerly along said road to Interstate Highway 80.

Area 61. Chain Lakes. Beginning at the junction of U.S. Highway 287 and Interstate Highway 80 at the city of Rawlins; westerly along said Interstate to the Wamsutter-Crooks Gap Road (Sweetwater County Road 23); northerly along said road to Crooks Gap and the divide along Green Mountain; southeasterly along said divide to Whiskey Peak and the head of Coal Creek; northeasterly down said creek to U.S. Highway 287; southerly along said highway to Interstate Highway 80.

Area 62. South Ferris. Beginning at the junction of U.S. Highway 287 and Interstate Highway 80 at the city of Rawlins; northerly along said highway to Muddy Gap Junction and the divide along the Ferris Mountains; southeasterly along said divide to Ferris Peak and the northeast branch of the Continental Divide; southeasterly along said branch to Bradley Peak and the divide along the Seminoe Mountains; easterly along said divide to Seminoe Dam and the North Platte River; southerly up said river to Interstate Highway 80; westerly along said Interstate to U.S. Highway 287.

Area 63. North Ferris. Beginning at Muddy Gap Junction; northeasterly along Wyoming Highway 220 to the Kortess Road (Natrona County Road 407); southerly along said road to the North Platte River; southerly up said river to Seminoe Dam and the divide along the Seminoe Mountains; westerly along said divide to Bradley Peak and the northeast branch of the Continental Divide; northwesterly along said divide to Ferris Peak and the divide along the Ferris Mountains; northwesterly along said divide to Muddy Gap Junction.

Area 64. Bison Basin. Beginning at the confluence of the Sweetwater River and Alkali Creek southwest of Sweetwater Station; southeasterly along the divide between Alkali Creek and the Sweetwater River to the northeast branch of the Continental Divide; northeasterly along said divide to the Crooks Mountain Road (B.L.M. Road 2409); southeasterly along said road to the Wamsutter-Crooks Gap Road (Fremont County Road 318 and Sweetwater County Road 23); southerly along said road to the Osborne Road (B.L.M. Road 3212); westerly along said road to the Hadsell Road (B.L.M. Road 3217); westerly along said road to the Bison Basin Road (B.L.M. Road 3221); northerly along said road to the Cyclone Rim Road (B.L.M. Road 3216); westerly along said road to the Red Creek Road (B.L.M. Road 3219); northwesterly along said road to the Sand Creek Road; northwesterly along said road to the Harris Slough Road; northerly along said road to the Three Forks-Atlantic City Road (B.L.M. Road 2317); northwesterly along said road to the Sweetwater River at Phelps-Dodge Bridge; northeasterly down said river to Alkali Creek.

Area 65. South Pass. Beginning where U.S. Highway 287 crosses the south boundary of the Wind River Reservation; southeasterly along said highway to the Sweetwater River; westerly up said river to Rock Creek; northwesterly up said creek to Granite Peak and the divide between the Sweetwater River and Popo Agie River drainages; northwesterly along said divide to the Continental Divide; northwesterly along said divide to the southern boundary of the Wind River Reservation; easterly along said boundary to U.S. Highway 287.

Area 66. Lander. Beginning where U.S. Highway 287 crosses the south boundary of the Wind River Reservation at the North Popo Agie River; easterly along said boundary to Wyoming Highway 135; southerly along said highway to U.S. Highway 287; northwesterly along said highway to the south boundary of the Wind River Reservation.

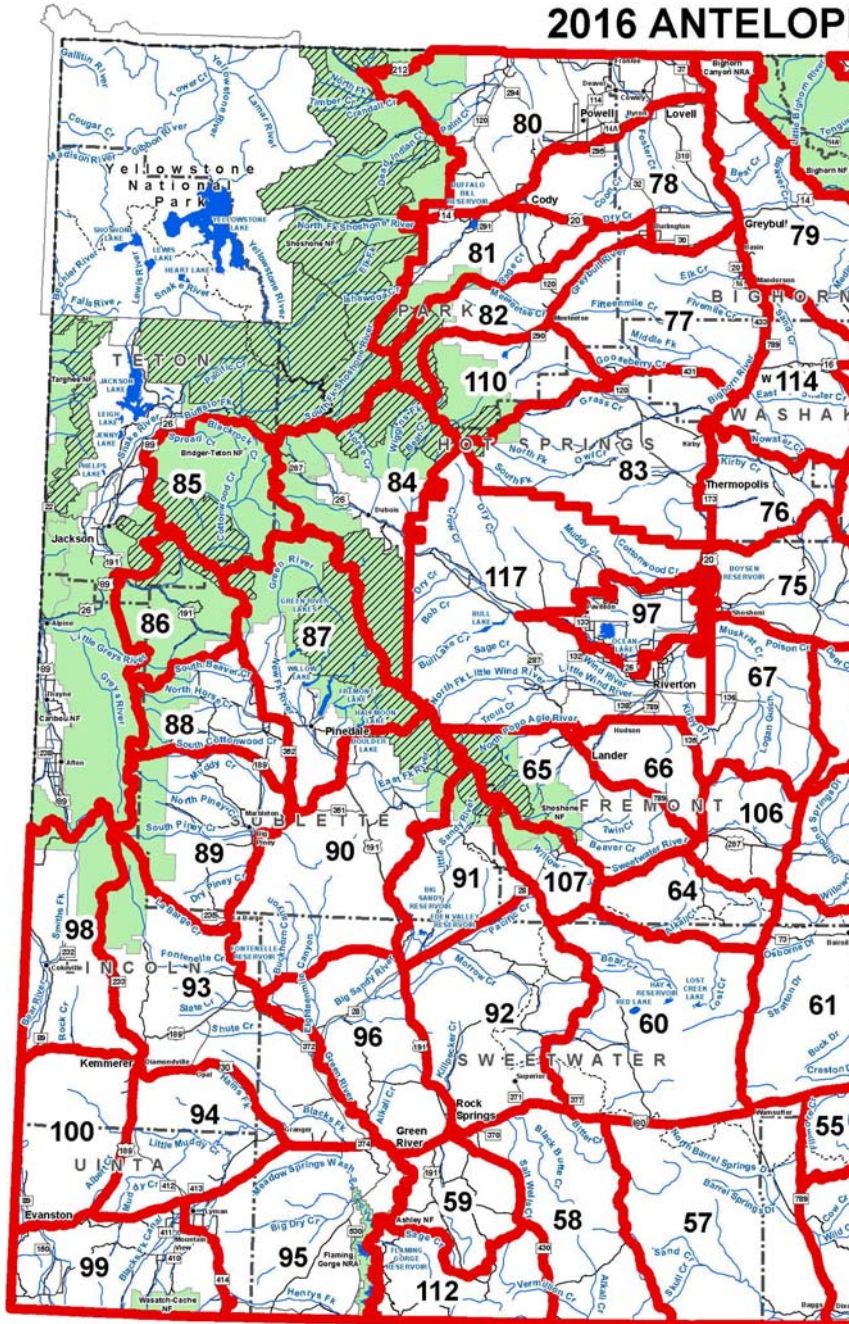
Area 67. Sand Draw. Beginning where U.S. Highway 20-26 crosses the east boundary of the Wind River Reservation; easterly along said highway to the Castle Gardens Road (Fremont County Road 507); southerly along said road to Wyoming Highway 136 (Gas Hills Road); southeasterly along said road to the Ore Road (Fremont County Road 5); southerly along said road to Beaver Rim; westerly and southerly along said rim to Wyoming Highway 135; northerly along said highway to the Wind River Reservation boundary; easterly and northerly along said boundary to U.S. Highway 20-26.

Area 68. Split Rock. Beginning at the junction of U.S. Highway 287 and the Ore Road (Fremont County Road 5); northerly along said road to Beaver Rim; northeasterly along said rim to the divide between Deer Creek and Dry Creek; northeasterly along said divide to the Dry Creek Road (Natrona County Road 321); southeasterly along said road to Wyoming Highway 220; southwestly along said highway to U.S. Highway 287; southerly along said highway to Coal Creek; southwestly up said creek to Whiskey Peak and the divide along Green Mountain; northwesterly along said divide to Crooks Gap and the Crooks Gap Road (Fremont County Road 318); northerly along said road to U.S. Highway 287.

Area 69. South Rattlesnake. Beginning where the Dry Creek Road (Natrona County Road 321) intersects Wyoming Highway 220; northwesterly along said road to the Gas Hills Road (Natrona County Road 212); northeasterly along said road to the divide along the Rattlesnake Mountain range; easterly and southerly along said divide to Wyoming Highway 220 at the top of Alcova Hill; westerly along said highway to the Dry Creek Road (Natrona County Road 321).

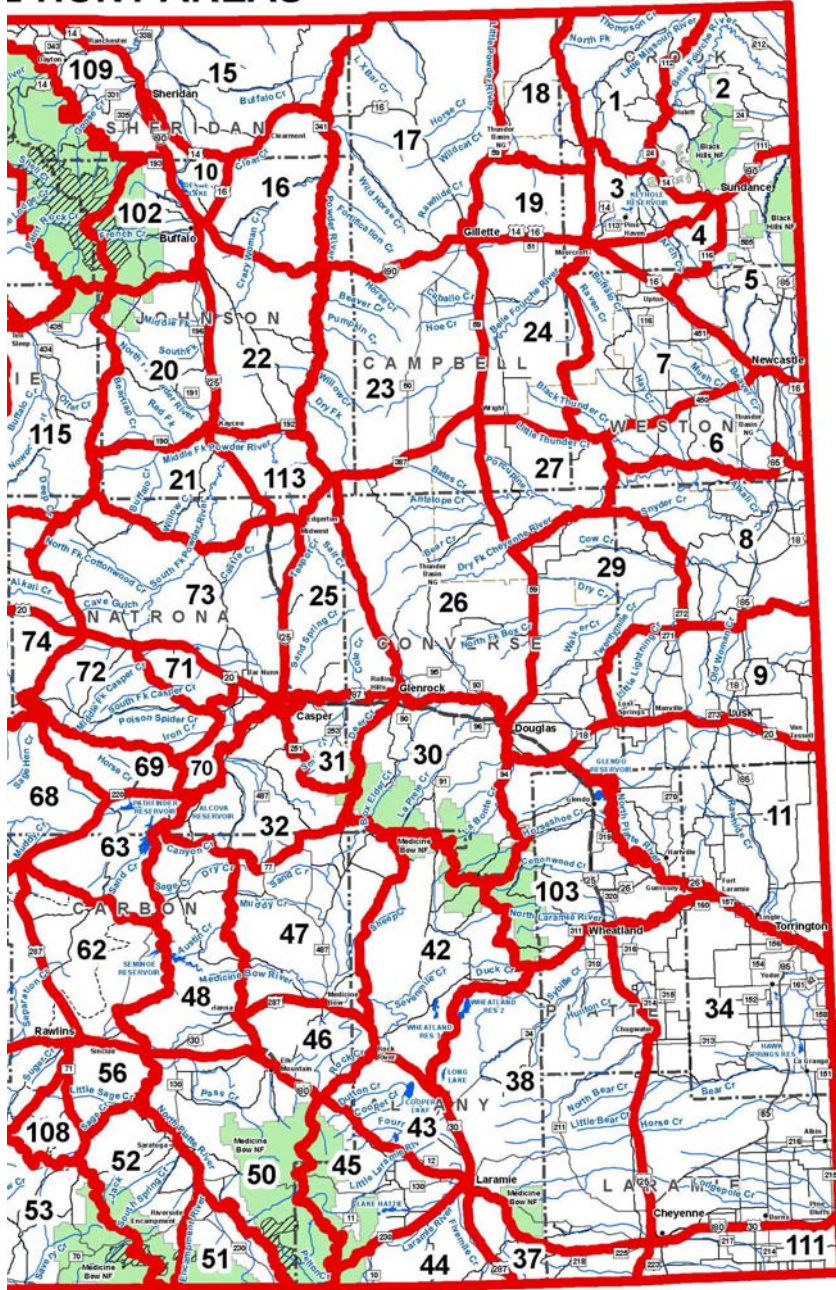
Area 70. Kendrick. Beginning at the crossing of the North Platte River by U.S. Highway 20-26 in the city of Casper; southwestly up said river to the Kortess Road (Natrona


2016 ANTELOPE



THIS MAP IS FOR GENERAL REFERENCE ONLY.
Please use the written boundary descriptions in this regulation for detailed hunt area boundary information.
Scan QR code to access hunt area map on Department website.

E HUNT AREAS



NOTE:  Wilderness area, nonresident antelope hunters must have a guide.

County Road 407) below Alcova Dam; northerly along said road to Wyoming Highway 220; westerly along said highway to the divide along the Rattlesnake Mountain range at the top of Alcova Hill; northerly along said divide to the Oregon Trail Road (Natrona County Road 319) at the top of Ryan Hill (Prospect Hill); northeasterly along said road to the Kendrick Canal at the Iron Creek Oil Field; northerly along said canal to U.S. Highway 20-26; easterly along said highway to the North Platte River.

Area 71. East Poison Spider. Beginning where U.S. Highway 20-26 crosses the Kendrick Canal; southerly along said canal to the Poison Spider Road (Natrona County Road 201); westerly along said road to the Oil Camp Road (Natrona County Road 210); northwesterly along said road to U.S. Highway 20-26 at the town of Powder River; southeasterly along said highway to the Kendrick Canal.

Area 72. West Poison Spider. Beginning at the intersection of the Gas Hills Road (Natrona County Road 212) and U.S. Highway 20-26 at the town of Waltman; easterly along said highway to the Oil Camp Road (Natrona County Road 210) at the town of Powder River; southeasterly along said road to the Poison Spider Road (Natrona County Road 201); easterly along said road to the Kendrick Canal; southerly along said canal to the Iron Creek Oil Field and the Oregon Trail Road (Natrona County Road 319); southwestly along said road to the divide along the Rattlesnake Mountain range at the top of Ryan Hill (Prospect Hill); northerly and westerly along said divide to the Gas Hills Road (Natrona County Road 212); northeasterly along said road to the town of Waltman and U.S. Highway 20-26.

Area 73. North Natrona. Beginning at the intersection of Interstate Highway 25 and U.S. Highway 20-26 in the city of Casper; westerly along U.S. Highway 20-26 to Natrona County Road 104 at Waltman; northerly along said road to Natrona County Road 103; northwesterly along said road to Natrona County Road 102; northerly along said road to Natrona County Road 101; northeasterly along said road to Badwater Creek; northeasterly along said creek to the divide between Badwater Creek, Deep Creek, and Buffalo Creek; northeasterly along said divide to the divide between the Middle Fork and North Fork of Buffalo Creek; easterly along said divide to the North Fork of Buffalo Creek; northeasterly along said creek to Natrona County Road 109; northeasterly along said road to Washakie County Road 6215; northeasterly along said road to the 33-Mile Road (Natrona County Road 110) at Kidd Flat; southeasterly along said road to Natrona County Road 113; easterly along said road to Natrona County Road 114; northeasterly along said road to Natrona County Road 115; easterly along said road to Wyoming Highway 387; easterly along said highway to Wyoming Highway 259 in the town of Midwest; southerly along said highway to Interstate Highway 25; southerly along said highway to U.S. Highway 20-26 in the city of Casper.

Area 74. Deer Creek. Beginning where the Castle Gardens Road (Fremont County Road 507) intersects U.S. Highway 20-26; easterly along said highway to the town of Waltman and the Gas Hills Road (Natrona County Road 212); southwestly along said road to the Dry Creek Road (Natrona County Road 321); southeasterly along said road to the divide between Deer Creek and Dry Creek; southwestly along said divide to Beaver Rim; southwestly along said rim to the Ore Road; northerly along said road to Wyoming Highway 136 (Gas Hills Road); westerly along said road to the Castle Gardens Road (Fremont County Road 507); northerly along said road to U.S. Highway 20-26.

Area 75. Badwater. Beginning at the town of Shoshoni and U.S. Highway 20-26; westerly along said highway to the east shoreline of Boysen Reservoir; northerly along said shoreline to Boysen Dam and the Wind River; northerly down said river to Gold Creek (excluding Indian tribal trust lands immediately north of U.S. Highway 20-26 near Boysen Reservoir and northeast of Boysen Dam); easterly up Gold Creek to the divide between Buffalo Creek and Badwater Creek on Copper Mountain; easterly along said divide to the divide between Badwater Creek and the Kirby-Nowater-Nowood Creek drainages; northeasterly then southeasterly along said divide to Cottonwood Pass and the divide between Nowood Creek and Badwater Creek; easterly along said divide to the Devil's Slide Road; easterly along said road to Sioux Pass and the Oakie Trail (Natrona County Road 101); easterly along said trail to the Big Horn Trail; easterly along said trail to the divide between Badwater Creek, Deep Creek, and the Middle Fork of Buffalo Creek; southwestly down Badwater Creek to Natrona County Road 101; southwestly along said road to Natrona County Road 102; southerly along said road to Natrona County Road 103; southeasterly along said road to Natrona County Road 104; southerly along said road to the town of Waltman and U.S. Highway 20-26; westerly along said highway to the town of Shoshoni.

Area 76. Copper Mountain. Beginning where Gold Creek intersects the east boundary of the Wind River Reservation; northerly and westerly along said boundary to the Big Horn River; northerly down said river to Walters Draw; easterly up said draw to the divide between Nowater Creek and Kirby Creek; easterly along said divide to the Murphy Dome-Mud Creek Road (B.L.M. Road 1409); northeasterly along said road to the Nowater Stock Drive Road (B.L.M. Road 1404); easterly along said road to the divide between the Nowood River and Nowater Creek; southerly along said divide to Hawks Butte and the divide between the Nowood River/Nowater Creek/Kirby Creek and Badwater Creek; westerly along said divide to the divide between Badwater Creek and Buffalo Creek on Copper Mountain; westerly along said divide to the head of Gold Creek; westerly down said creek to the east boundary of the Wind River Reservation.

Area 77. Fifteen Mile Creek. Beginning at the town of Meeteetse; easterly down the Greybull River to the Big Horn River; southerly up said river to Wyoming Highway 432; westerly along said highway to its junction with Wyoming Highway 431 and U.S. Highway 20; westerly along Wyoming Highway 431 to U.S. Highway 120; northwesterly along U.S. Highway 120 to the town of Meeteetse.

Area 78. McCullough Peaks. Beginning at the junction of U.S. Highway 120 and U.S. Highway 14-16-20 in the town of Cody; northerly along U.S. Highway 120 to the Shoshone River; easterly down said river to the Bighorn River; southerly up said river to the Greybull River; westerly up said river to Bighorn County Road 8; northerly up said road to Wyoming Highway 30; northerly up said highway to U.S. Highway 14-16-20; westerly along said highway to U.S. Highway 120.

Area 79. Big Horn. Beginning on the Big Horn River where it crosses the Wyoming-Montana state line; easterly along said line to the Bighorn National Forest boundary; southerly

and easterly along said boundary to U.S. Highway 16; westerly along said highway to the Nowood River near the town of Ten Sleep; northwesterly down said river to the Big Horn River at the town of Manderson; northerly down said river to the Wyoming-Montana state line.

Area 80. Badger Basin. Beginning where the Big Horn River crosses the Wyoming-Montana state line; southerly up said river to the Shoshone River; westerly up said river to the North Fork of the Shoshone River; westerly up said river to the Shoshone National Forest boundary; easterly then northerly along said boundary to Wyoming Highway 296 (Sunlight Road); northerly along said highway to U.S. Highway 212; easterly along said highway to the Wyoming-Montana state line; east along said line to the Big Horn River.

Area 81. South Fork. Beginning where the South Fork of Dry Creek crosses Wyoming Highway 120 at the Halfway House historical marker; southwestly up said creek to the divide between Meeteetse Creek and Sage Creek; westerly along said divide to the divide between the Greybull River and the South Fork of the Shoshone River; westerly then southwestly along said divide to the divide between Boulder Creek and Needle Creek; westerly along said divide to the divide between Boulder Creek and the South Fork of the Shoshone River; northerly along said divide to the head of Aspen Creek; northwesterly down said creek to the South Fork of the Shoshone River; northeasterly down said river to the Shoshone National Forest boundary; northerly along said boundary to the North Fork of the Shoshone River; easterly down said river to the Shoshone River; easterly along said river to Wyoming Highway 120; southerly along said highway to U.S. Highway 14-16-20; easterly along said highway to Dry Creek; southwestly up said creek to the South Fork of Dry Creek; southwestly up said creek to Wyoming Highway 120 and the Halfway House historical marker.

Area 82. North Greybull River. Beginning where the South Fork of Dry Creek crosses Wyoming Highway 120 at the Halfway House historical marker; northeasterly down said creek to Dry Creek; northeasterly down said creek to U.S. Highway 14-16-20; easterly along said highway to the Wyoming Highway 30 (Burlington Road); southerly along said road to Big Horn County Road 8; southerly along said road to the Greybull River; westerly then southerly along said river to the divide between the Greybull River and the Wind River; northwesterly along said divide to the divide between the Greybull River and the South Fork of the Shoshone River; northerly then easterly along said divide to the divide between Meeteetse Creek and Sage Creek; easterly along said divide to the South Fork of Dry Creek; northeasterly down said creek to Wyoming Highway 120 at the Halfway House historical marker.

Area 83. Owl Creek. Beginning at the junction of Wyoming Highway 120 and Wyoming Highway 431, easterly along Wyoming Highway 431 to the junction with Wyoming Highway 432; easterly along said highway to the Big Horn River; southerly up said river to the Wind River Reservation boundary, westerly, then northerly, then westerly along said boundary to the divide between Owl Creek and the South Fork of the Wood River; northeasterly along said divide to the divide between Cottonwood Creek and Gooseberry Creek; northeasterly along said divide to the divide between Gooseberry Creek and Grass Creek; easterly along said divide to Wyoming Highway 120, southeasterly along said highway to the junction of Wyoming Highway 120 and Wyoming Highway 431; in addition, all non-Indian fee title lands in that portion of Hot Springs County within the exterior boundaries of the Wind River Reservation are included.

Area 84. Wind River. All of the drainage of the Wind River west of the western boundary of the Wind River Reservation including areas of the Spence and Moriarity Wildlife Management Area east of the East Fork of the Wind River.

Area 85. Gros Ventre. Beginning where Flat Creek crosses the National Elk Refuge boundary; northerly along said boundary to the Grand Teton National Park boundary; northerly along said boundary to U.S. Highway 26-287; easterly along said highway to the Continental Divide at Togwotee Pass; southerly along said divide to the Union Pass Road (U.S.F.S. Road 600); southwestly along said road to the Darwin Ranch Road (U.S.F.S. Road 620); westerly along said road to the divide between the Green River and the Gros Ventre River; southwestly along said divide to the divide between the Gros Ventre River and the Hoback River at Hodges Peak; westerly along said divide to the divide between Flat Creek and the Hoback River; westerly along said divide to Flat Creek; northerly down said creek to the National Elk Refuge boundary.

Area 86. Hoback. All of the drainage of the Hoback River.

Area 87. Pinedale. Beginning where the East Green River Road (Sublette County Road 23-110) intersects Wyoming Highway 351; northerly along said road to U.S. Highway 191 at Cora Junction; westerly then northerly along said highway to the divide between the Hoback River and the Green River (Hoback Rim); northerly along said divide to the divide between the Hoback River and the Gros Ventre River at Hodges Peak; northeasterly along said divide to the Darwin Ranch Road (U.S.F.S. Road 620); easterly along said road to the Union Pass Road (U.S.F.S. Road 600); northeasterly along said road to the Continental Divide at Union Pass; southerly along said divide to the Middle Fork of Boulder Creek; southwestly down said creek to Boulder Creek; westerly down said creek to the New Fork River; southwestly down said river to Wyoming Highway 351; westerly along said highway to the East Green River Road (Sublette County Road 23-110).

Area 88. Beaver. Beginning where the East Green River Road (Sublette County Road 23-110) intersects Wyoming Highway 351; westerly along said highway to the Green River; northerly up said river to Cottonwood Creek; westerly up said creek to South Cottonwood Creek; westerly up said creek to the South Fork of South Cottonwood Creek; westerly up said creek to the divide between the Green River and the Greys River; northerly along said divide to the Hoback Rim; easterly along said rim to U.S. Highway 191; southerly along said highway to the East Green River Road (Sublette County Road 23-110) at the Cora Junction; southerly along said road to Wyoming Highway 351.

Area 89. Piney. Beginning where LaBarge Creek enters the Green River; westerly up said creek to the Greys River Road; northerly up said road to the divide between the Green River and the Greys River; northerly along said divide to the South Fork of South Cottonwood Creek; easterly down said creek to the South Fork of Cottonwood Creek; easterly down said creek to Cottonwood Creek; easterly down said creek to the Green River; southerly down said river to LaBarge Creek.

Area 90. Yellow Point. Beginning where the County Line Road (Sweetwater County Road 52) crosses the Green River; northerly up said river to Wyoming Highway 351; easterly

along said highway to the New Fork River; northeasterly up said river to Boulder Creek; easterly up said creek to the Middle Fork of Boulder Creek; northeasterly up said creek to the Continental Divide; southerly along said divide to the Big Sandy River; southerly down said river to the Big Sandy Reservoir Road (Sweetwater County Road 28); westerly along said road to U.S. Highway 191; southerly along said highway to the Eighteen Mile Road (Sweetwater County Road 49); westerly then southerly along said road to the County Line Road (Sweetwater County Road 52); southerly along said road to the Green River.

Area 91. Dry Sandy. Beginning at the town of Farson and U.S. Highway 191; northerly along said highway to the Big Sandy Reservoir Road (Sweetwater County Road 28); easterly along said road to the Big Sandy Reservoir Dam; northerly up said river to the Continental Divide; southeasterly along said divide to Mt. Nystrom; easterly from Mt. Nystrom to Sweetwater Gap and the headwaters of the Sweetwater River; southerly down said river to Wyoming Highway 28; southwesterly along said highway to the town of Farson.

Area 92. Steamboat. Beginning at the junction of Interstate Highway 80 and U.S. Highway 191 in the city of Rock Springs; northerly along U.S. Highway 191 to U.S. Highway 28; northeasterly along U.S. Highway 28 to the Oregon Buttes Road (Sweetwater County Road 74); southerly along said road to the Bar X Road (Sweetwater County Road 21); easterly along said road to the Nine Mile Road (Sweetwater County Road 15) at the Bar X Ranch; southerly along said road to Wyoming Highway 377; southerly along said highway to Point of Rocks and Interstate Highway 80; westerly along said highway to U.S. Highway 191.

Area 93. West Green River. Beginning where the Green River crosses Interstate Highway 80; westerly along said highway to U.S. Highway 30; northwesterly along said highway to the town of Kemmerer and Ham's Fork Creek; northerly up said creek to Commissary Ridge; northerly along said ridge to the head of LaBarge Creek; southeasterly down said creek to the Green River; southeasterly down said river to Interstate Highway 80.

Area 94. Carter Lease. Beginning at the junction of Interstate Highway 80 and U.S. Highway 189; northerly along U.S. Highway 189 to U.S. Highway 30; easterly then southerly along said highway to Interstate Highway 80; westerly along said highway to U.S. Highway 189.

Area 95. Cedar Mountain. Beginning where the Flaming Gorge Reservoir crosses the Wyoming-Utah state line; west along said line to the Hoop Lake-Hole-in-the-Rock Road (Uinta County Road 295); northerly along said road to Wyoming Highway 414 at the town of Lone Tree; northerly along said highway to Interstate Highway 80; easterly along said highway to the Green River; southerly down said river to Flaming Gorge Reservoir; southerly along the east shore of Flaming Gorge Reservoir to the Wyoming-Utah state line.

Area 96. West Farson. Beginning where the Green River crosses Interstate Highway 80; northerly up said river to the CCC Bridge and the County Line Road (Sweetwater County Road 52); northerly along said road to the Eighteen Mile Road (Sweetwater County Road 49); northerly then easterly along said road to U.S. Highway 191; southerly along said highway to Interstate Highway 80; westerly along said highway to the Green River.

Area 97. Boysen. All lands within the Bureau of Reclamation's Riverton and Boysen Unit boundaries and those lands within Boysen State Park south of Cottonwood Creek and west of Boysen Reservoir and those lands within Boysen State Park south of U.S. Highway 20-26.

Area 98. Sage. Beginning at the town of Kemmerer and U.S. Highway 30; westerly along said highway to Wyoming Highway 89 at Sage Junction; southwesterly along said highway to the Wyoming-Utah state line; northerly along said line to the Wyoming-Idaho state line; northerly along said line to the divide between the Salt River and Bear River; easterly along said divide to the divide between the Salt River and Smith's Fork; northeasterly along said divide to the divide between the Smith's Fork and Greys River; southeasterly along said divide to Commissary Ridge; southerly along said ridge to the head of the Ham's Fork Creek; southerly down said creek to U.S. Highway 30.

Area 99. Uinta. Beginning where Interstate Highway 80 crosses the Wyoming-Utah state line; easterly along said highway to Wyoming Highway 414; southerly along said highway through the town of Lone Tree to the Hoop Lake-Hole-in-the-Rock Road (Uinta County Road 295); southerly along said road to the Wyoming-Utah state line; westerly then northerly along said line to Interstate Highway 80.

Area 100. Bear River Divide. Beginning where Interstate Highway 80 crosses the Wyoming-Utah state line; northerly along said line to Wyoming Highway 89 west of Sage Junction; easterly along said highway to U.S. Highway 30; easterly along said highway to U.S. Highway 189; southerly along said highway to Interstate Highway 80; westerly along said highway to the Wyoming-Utah state line.

Area 102. Buffalo. Beginning where Interstate Highway 90 crosses Piney Creek; southerly along said highway to Interstate Highway 25; southerly along said highway to the Trabing Road (Johnson County Road 13); westerly along said road to Wyoming Highway 196; southerly along said highway to the Crazy Woman Canyon Road (Johnson County Road 14); westerly along said road to U.S. Highway 16; westerly along said highway to the divide along the Big Horn Mountain range at Powder River Pass; northerly along said divide to South Piney Creek; northeasterly down said creek to Piney Creek; southeasterly down said creek to Interstate Highway 90.

Area 103. Dwyer. Beginning at the confluence of the North Platte River and the Laramie River southwest of Ft. Laramie; westerly up the Laramie River to Duck Creek; westerly up said creek to Ashley Creek; northerly up said creek to the Palmer Canyon Road (Albany County Road 721); westerly along said road to its junction with the Cottonwood Park Road (Albany County Road 71); northerly along said road to the North Laramie River; westerly up said river to Bear Creek; northerly up said creek to Friend Creek; northerly up said creek to the divide between Horseshoe Creek and the North Laramie River; northerly along said divide to the divide between Horseshoe Creek and Soldier Creek; northerly along said divide to U.S.F.S. Road 633; northerly and westerly along said road to the town of Esterbrook and the Esterbrook Road (Converse County Road 5); northerly along said road to the Esterbrook Highway (Wyoming Highway 94); northerly along said highway to the North Platte River at Jackalope Warm Springs; easterly and southerly down said river to the Laramie River.

Area 106. Long Creek. Beginning at the junction of U.S. Highway 287 and the Crooks Gap Road (Fremont County Road 318); southerly along said road to the Crooks Mountain Road (B.L.M. Road 2409); northwesterly along said road to the northeast branch of the Continental Divide; southwestly along said divide to the divide between Alkali Creek and the Sweetwater River; northwesterly along said divide to the confluence of Alkali Creek and the Sweetwater River; northeasterly down said river to U.S. Highway 287; northwesterly along said highway to Wyoming Highway 135; northerly along said highway to Beaver Rim; easterly along said rim to the Ore Road (Fremont County Road 5); southerly along said road to U.S. Highway 287.

Area 107. Upper Sweetwater. Beginning where Wyoming Highway 28 crosses the Sweetwater River; northwesterly up said river to the divide between the Sweetwater River and the Popo Agie River drainages; southeasterly along said divide to Granite Peak and the head of Rock Creek; southeasterly down said creek to the Sweetwater River; westerly up said river to the Phelps-Dodge Bridge and the Three Forks-Atlantic City Road (B.L.M. Road 2317); southerly along said road to the Harris Slough Road; southerly along said road to the Continental Divide Road; westerly along said road to the Oregon Buttes Road (Fremont County Road 445); northerly along said road to Wyoming Highway 28; northeasterly along said highway to the Sweetwater River.

Area 108. Bridger Pass. Beginning where Wyoming Highway 71 crosses Five Mile Ridge south of the city of Rawlins; southerly along said highway to the Sage Creek Road (Carbon County Road 401); southerly along said road to the McCarty Canyon Road (Carbon County Road 503); southwestly along said road to the Miller Hill Road (B.L.M. Road 3328); northwesterly along said road to the Muddy Creek Road (B.L.M. Road 3306); westerly along said road to Muddy Creek; westerly down said creek to the Sulphur Springs Ranch Road crossing; northeasterly from said crossing along the Atlantic Rim and Five Mile Ridge to Wyoming Highway 71.

Area 109. Beckton. Beginning where Interstate Highway 90 crosses the Wyoming-Montana state line; southerly along said highway to Piney Creek; northwesterly up said creek to South Piney Creek; westerly up said creek to the Bighorn National Forest boundary; northwesterly along said boundary to the Wyoming-Montana state line; easterly along said line to Interstate Highway 90.

Area 110. South Greybull River. All of the drainage of the Greybull River south of the Greybull River and west of Wyoming Highway 120; all of the drainage of Gooseberry Creek west of Wyoming Highway 120.

Area 111. Chalk Bluffs. Beginning at the junction of Interstate Highway 80 and the Wyoming-Nebraska state line; southerly along said line to where the Wyoming-Nebraska-Colorado state lines intersect; westerly along the Wyoming-Colorado state line to Interstate Highway 25; northerly along said highway to Interstate Highway 80; easterly along said highway to the Wyoming-Nebraska state line.

Area 112. Pine Mountain. Beginning where Wyoming Highway 430 crosses the Wyoming-Colorado state line; west along said line to Flaming Gorge Reservoir; northerly along the east shore of said reservoir to Sage Creek; easterly up said creek to Sage Creek Road (Sweetwater County Road 36); easterly along said road to Ramsey Ranch Road (Sweetwater County Road 34); southerly along said road to U.S. Highway 191; easterly along said highway to Ramsey Ranch Road (Sweetwater County Road 34); easterly along said road to Clay Basin Pipeline Road (Sweetwater County Road 71); northeasterly along said road to Aspen Mountain Road (Sweetwater County Road 27); northerly along said road to Mud Springs Road (Sweetwater County Road 32); northeasterly along said road to Wyoming Highway 430; southerly along said highway to the Wyoming-Colorado state line.

Area 113. Salt Creek. Beginning at the junction of Wyoming Highway 192 and Wyoming Highway 387; southwestly along Wyoming Highway 387 to Interstate Highway 25; northwesterly along said highway to Wyoming Highway 192; easterly and southerly along said highway to Wyoming Highway 387.

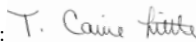
Area 114. Nowater. Beginning at the confluence of Walters Draw and the Bighorn River; northerly down said river to the Nowood River; southeasterly up said river to U.S. Highway 16; westerly along said highway to the Blue Bank Road (B.L.M. Road 1411); southerly along said road to the Nowater Stock Drive Road (B.L.M. Road 1404); westerly along said road to the Murphy Dome-Mud Creek Road (B.L.M. Road 1409); southwestly along said road to the divide between Nowater Creek and Kirby Creek; westerly along said divide to the head of Walters Draw; westerly down said draw to the Bighorn River.

Area 115. Upper Nowood. Beginning at the junction of the Blue Bank Road and U.S. Highway 16; easterly along said highway to the Canyon Creek Road (U.S.F.S. Road 25); southerly along said road to the Gold Mine Road (U.S.F.S. Road 452); southerly along said road to the Hazelton Road (Johnson County Road 3); southerly along said road to Washakie County Road 6215 at Kidd Flat; southwestly along said road to the Big Horn Mountain Road (Natrona County Road 109); southwestly along said road to the North Fork of Buffalo Creek; southwestly along said creek to the divide between the Middle Fork and North Fork of Buffalo Creek; westerly along said divide to the divide between Badwater Creek, Deep Creek, and Buffalo Creek; southwestly along said divide to the Big Horn Trail; westerly along said trail to the Oakie Road (Natrona County Road 101); westerly along said road to Sioux Pass and the divide between the Nowood River and Badwater Creek; westerly then northerly along said divide to Hawks Butte and the divide between the Nowood River and Nowater Creek; northerly along said divide to the Nowater Stock Drive Road (B.L.M. Road 1404); northeasterly along said road to the Blue Bank Road (B.L.M. Road 1411); northerly along said road to U.S. Highway 16.

Area 117. Crowheart Butte. All non-Indian owned fee title lands within the exterior boundaries of the Wind River Reservation; excluding Antelope Hunt Area 97, those areas of the Spence and Moriarity Wildlife Management Area that lie east of the East Fork of the Wind River, and those lands within Hot Springs County.

WYOMING GAME AND FISH COMMISSION

By:



T. Carrie Little, President

Dated: April 21, 2016

IMPORTANT HUNTING INFORMATION

Reference Wyoming Game and Fish Commission Chapter 2 General Hunting Regulation and W.S. § 23-1-103, § 23-1-302, § 23-1-703, § 23-2-106, § 23-2-101, § 23-3-104, § 23-3-111, § 23-3-304, § 23-3-305, § 23-3-306 and § 23-3-308.

DISCLAIMER: The following sections are a condensed summary of applicable wildlife laws and other important information. This summary is in no way intended to alter the content or statutory intent of those laws. If you have any questions regarding the precise language, you can view a copy of the State Statutes (Title 23) and Wyoming Game and Fish Commission (Commission) Regulations, available at the Cheyenne Headquarters, Department Regional Offices, the Department website or consult the following websites: <http://soswy.state.wy.us> or <http://legisweb.state.wy.us>.

ACCESS AND VEHICLE TRAVEL ON LANDS ENROLLED IN THE DEPARTMENT'S WALK-IN AREAS OR HUNTER MANAGEMENT AREAS. Access to private lands enrolled in the Walk-in Area or Hunter Management Area Programs is granted only for the species of wildlife and for the time periods specified in Department publications. Hunters wishing to use enrolled Access Yes private lands for any other wildlife species, activity or time period must obtain permission from the landowner or person in charge of the property. Travel by motorized vehicle is prohibited, except as otherwise stated. Department publications or signs shall serve as official regulations of the Commission and may advise of additional restrictions. The landowner or person in charge of the property may grant permission for motorized vehicle travel contrary to that specified by Department signs or publications.

ACCESS YES PROGRAM. The Access Yes Program was established in response to numerous public requests that the Department help address the difficulties of finding places to hunt and fish. Hunters and anglers can voluntarily donate any whole dollar amount to Access Yes when they purchase or apply for a license. Contributions are used to secure additional public hunting and fishing access on private lands and inaccessible public lands. Donating helps support the program, but does not provide or imply access to all private or inaccessible public lands in Wyoming.

AGE RESTRICTIONS; BIG OR TROPHY GAME. The minimum age to take any big or trophy game animal is twelve (12) years. Any person under the age of fourteen (14) years shall at all times when hunting be accompanied by an adult who possesses and can exhibit a hunter safety certificate, or who currently holds or has been issued a Wyoming big game hunting license within the last five (5) years. If the person accompanying the hunter under the age of fourteen (14) years is not the parent or guardian of the hunter, the hunter shall have in their possession a permission slip signed by their parent or guardian allowing them to hunt under supervision. Each accompanying adult shall supervise not more than one (1) hunter under the age of fourteen (14) years.

ARCHERY EQUIPMENT. Archery equipment is legal to take game animals. When hunting antelope, bighorn sheep, black bear, deer, mountain goat, mountain lion, or gray wolf where designated as a trophy game animal, an archery hunter shall use a longbow, recurve bow or compound bow of not less than forty (40) pounds draw weight. When hunting elk or moose, an archery hunter shall use a longbow, recurve bow or compound bow of not less than fifty (50) pounds draw weight. A crossbow hunter shall use a crossbow having a peak draw weight of at least ninety (90) pounds and a bolt of at least sixteen (16) inches in length. The broadhead used on arrows or bolts shall not pass through a seven-eighths (7/8) inch solid ring when fully expanded.

ARCHERY LICENSES AND SPECIAL ARCHERY SEASONS. No person shall hunt big game or trophy game animals with archery equipment during a special archery hunting season without first obtaining an archery license and the appropriate hunting license. No person holding an archery license shall take big game or trophy game animals during a special archery hunting season or during a limited quota archery season by the use of any type of firearm. Upon request by a game warden or other Wyoming law enforcement officer, a person who has taken a big or trophy game animal during a special archery hunting season or during a limited quota archery only hunting season shall allow testing of the animal's tissue for confirmation of compliance with this section.

ARTIFICIAL LIGHT FOR HUNTING PROHIBITED; EXCEPTION. No person shall take any wildlife with the aid of or by using any artificial light or lighting device except that predators may be taken with the aid of an artificial light or lighting device by:

- (i) A public officer authorized to and conducting predator control;
- (ii) A landowner, resident manager or person with the landowner's or a resident manager's written permission to take predators, on land under the landowner's control for the protection of their property.

It is prima facie evidence of a violation if a person uses an artificial light in an area that may be inhabited by wildlife while having in their possession and control any device for taking wildlife. This shall not prohibit the hunting on foot of raccoon with the aid of a handlight, provided the hunter is accompanied by a raccoon hunting dog and, if hunting on private land(s), has the written permission of the landowner or their agent.

AUTOMATIC WEAPON AND SILENCERS. No person shall take any wildlife with any fully automatic weapon. Firearm silencers may be used during the legal taking of any game animal.

BAG LIMITS AND NUMBER OF LICENSES. No person shall apply for or receive more than one (1) license valid for each big or trophy game species during any one (1) calendar year, except as otherwise allowed by Commission regulations. The maximum bag limit is one (1) big or trophy game animal per each valid license held, and in accordance with age, sex, species, and antler or horn development limitations as specified by Commission regulation.

BAITING OF BIG GAME ANIMALS PROHIBITED EXCEPT BY QUALIFIED DISABLED PERSONS. No person shall take any big game animal over, or by the use of bait except as follows: any legally blind person, person confined to a wheelchair, person hunting with a permit issued pursuant to W. S. § 23-3-304 (d)(iv) or any person hunting with a license issued pursuant to W. S. § 23-1-705 (j) may place a bait for big game or take a big game animal by the use of bait.

CHECK STATIONS. Every hunter, angler, or trapper of furbearing animals shall stop and report at every check station on route to or from the hunting, fishing or trapping area, regardless if the person has wildlife in possession. Upon request of any authorized Department representative, anyone who has been hunting, fishing or trapping shall produce a valid license and conservation stamp, if required, and special management permit, if required, for game animals, game birds, furbearing animals or fish. Even if the game meat or fish in possession has been cut and wrapped or processed, the person transporting wildlife shall stop and report at the check station. Any person transporting wildlife harvested in another state or country shall stop at check stations on their route.

CLOSED AREAS. All areas within the state of Wyoming not opened by specific order of the Commission shall be closed to the taking of game animals, furbearing animals, and game birds.

CLOTHING REQUIREMENTS. HUNTERS REQUIRED TO WEAR FLUORESCENT ORANGE CLOTHING. All persons hunting big or trophy game during an open firearm season, shall wear in a visible manner one (1) or more exterior garments of a fluorescent color that shall include at least one of the following: a hat, shirt, jacket, coat, vest or sweater. Fluorescent orange camouflage is legal. Muzzle-loader hunters participating in limited quota muzzle-loading seasons are required to meet the fluorescent orange requirements. Archers and crossbow hunters hunting during a special archery season or limited quota archery only Type 9 season are exempt from this requirement.

CONSERVATION STAMP REQUIRED AND EXEMPTIONS. Each person licensed to hunt or fish in Wyoming shall purchase one (1) conservation stamp valid for the calendar year. The stamp shall be signed in ink and shall be in possession of the person while HUNTING OR FISHING. Hunters or anglers who acquire a lifetime conservation stamp or a conservation stamp authorization from the Department's Electronic Licensing Service (ELS) shall not be required to meet the signature provision.

Persons holding the following licenses are exempt from the requirement to purchase a conservation stamp while exercising privileges under THESE licenses:

- Daily hunting or fishing license;
- Special limited fishing permit holders;
- Wyoming fifty (50%) percent disabled veteran fishing license; or,
- Licenses reissued to a veteran with disabilities.

Persons holding the following licenses are exempt from the requirement to purchase a conservation stamp while exercising hunting or fishing privileges under ANY Wyoming license. The person shall, at all times, be in possession of the license allowing the conservation stamp exemption while in the field:

- Any Wyoming pioneer hunting or fishing license;
- Wyoming one hundred (100%) percent disabled veteran game bird, small game and fishing license;
- Military combat general elk or general deer license; or,
- Military combat game bird or small game license.

Conservation stamps may be purchased from the Cheyenne Headquarters, Department Regional Offices, license selling agents throughout the state and the Department website. A lifetime conservation stamp may be purchased by applying to the Cheyenne Headquarters or through any Department Regional Office.

DATING AND DISPLAY OF GAME ANIMAL CARCASS COUPONS. When any big game animal, trophy game animal, or wild turkey is killed under a license, the licensee shall detach, sign and date the proper carcass coupon and attach the coupon to the carcass in a readily visible manner before leaving the site of the kill. **When dating a carcass coupon, the entire day and month of the kill shall be completely cut out and removed.** (See page 31.) The carcass coupon shall remain on the game animal or wild turkey carcass at all times until the meat undergoes processing, or on the trophy game animal hide until it reaches the hunter's home or a taxidermist, except that during transportation of the carcass or hide, the validated carcass coupon may be removed to prevent its loss. If the carcass coupon is removed for transportation of the carcass or hide, it must be

completely filled out and in the possession of the person accompanying the carcass or hide at all times. This requirement also applies to sandhill cranes killed under a limited quota sandhill crane permit. While quarters or pieces of an animal are being packed from the field, the carcass coupon shall remain with the person transporting the animal.

DEFINITIONS:

"Accompanied by a Mentor" means being directly supervised at all times by a mentor who is within sight and direct voice contact.

"Aircraft" means any machine or device (including but not limited to airplane, helicopter, glider, dirigible or unmanned aerial vehicle (UAV)) capable of atmospheric flight.

"Artificial Light or Lighting Device" means any man-made light or lighting device that projects a light visible to the unaided eye outside of the device, or any battery-powered device that provides an enhanced ability to see in the dark.

"Bag Limit" means the maximum number of big game or trophy game animals that may be taken by an individual possessing a proper license.

"Big Game Animal" means antelope, bighorn sheep, deer, elk, moose or mountain goat.

"Buck Antelope" means male antelope with visible horns and a dark check patch at the base of the ear.

"Bureau of Land Management (B.L.M.)" means the land management agency administered by the U.S. Department of the Interior.

"Bureau of Reclamation Land" means lands administered by the U.S. Department of the Interior Bureau of Reclamation.

"Certificate of Competency and Safety in the Use and Handling of Firearms" means a certification issued for the completion of an approved hunter safety course.

"Designated Road" means an established road marked with a white arrow sign.

"Domicile" means that place where a person has his true, fixed and permanent home to which whenever the person is temporarily absent the person has the intention of returning. To prove domicile as required by Wyoming Statutes § 23-1-102 and § 23-1-107 a person shall be able to establish that they: physically reside in Wyoming; has made his permanent home in Wyoming; is not residing in Wyoming for a special or temporary purpose; and, has abandoned his domicile in all other states, territories or countries.

"Doe" means an adult female antelope or adult female deer.

"Drainage" means all lands within the watershed of a named river or stream, including all tributaries and standing waters, which drain into that river or stream.

"Edible Portion of Big Game Animal" means the meat of the front quarters as far down as the knees, meat of the hindquarters as far down as the hocks, and the meat along the backbone between the neck and hindquarters including the loins and tenderloins, excluding meat on the ribs and neck.

"Established Road" means any road or trail that has been graded or constructed to carry motor vehicles or on which repeated legal motor vehicle traffic has created well-defined tracks.

"Fawn" means young-of-the-year antelope or young-of-the-year deer.

"Handgun" means a firearm that has a barrel length of less than sixteen (16) inches, has a short stock, and is designed to be fired by the use of a single hand without shoulder support.

"Hunt Area" means the geographic boundaries within which a license shall be valid.

"Irrigated Land" means agricultural lands that are supplied with supplemental water by ditches, pipes, flooding or spraying.

"Limited Quota Licenses" means licenses limited in number and valid only in a specified hunt area(s) or portion(s) of a hunt area, for a specified type of weapon, for a specified sex, age class or species of big game, trophy game, wild turkey, or sandhill crane during specified season dates.

"Mentee" means a person who has received special authorization from the Department to take wildlife and who has not received a certificate of competency and safety in the use and handling of firearms.

"Mentor" means a person who is at least eighteen (18) years of age, can demonstrate he has a certificate of competency and safety in the use and handling of firearms, possesses a valid Wyoming hunting license and is directly supervising not more than one (1) mentee, other than immediate family members, at a time while in the field.

"Motorized Vehicle" means any vehicle powered by an internal combustion or electric engine.

"Muzzle-loading Firearm" means a muzzle-loading rifle or muzzle loading handgun of at least .40 caliber and using a lead or expanding point bullet using a charge of at least fifty (50) grains of black powder or its equivalent.

"Off National Grasslands" means lands other than the Thunder Basin National Grasslands and Bankhead-Jones lands administered by the U.S. Forest Service.

"Predacious Bird" means English sparrow and starling.

"Predatory Animal" means coyote, jackrabbit, porcupine, raccoon, red fox, skunk, stray cat or gray wolf when located outside the Wolf Trophy Game Management Area and Seasonal Wolf Trophy Game Management Area as described in W.S. § 23-1-101(a)(xii)(B) (I) and (II).

"Private Land" means all fee title/deeded lands owned by a private individual, partnership or corporation.

"Processor" means a custom meat processor licensed by the Wyoming Department of Agriculture.

"Public Road or Highway" means any roadway that is open to vehicular travel by the public. The road surface, the area between the fences on a fenced public road or highway, and an area thirty (30) feet perpendicular to the edge of the road surface on an unfenced public road or highway shall be considered the public road or highway. Two-track trails on public lands are not public roads.

"Regular Hunting Seasons" means seasons which delineate the dates and hunt areas for the taking of big game or trophy game animals with legal weapons in accordance with the license

types and limitations as set forth in Section 2 of Chapters 5 (Antelope), 6 (Deer), 7 (Elk), 8 (Moose), Sections 3 and 7 of Chapter 9 (Bighorn Sheep and Mountain Goat), Section 10 of Chapter 3 (Black Bear) and Section 4 of Chapter 42 (Mountain Lion) of the Commission regulations.

"Resident" means a United States citizen or legal alien who is domiciled in Wyoming for at least one (1) full year immediately preceding making application for any resident game and fish license, preference point, permit or tag, shall not have claimed residency in any other state, territory or country for any other purpose during that one (1) year period, and meets the requirements specified in Wyoming Statutes § 23-1-102 and § 23-1-107.

"Site of the Kill" means the location where the harvested animal died.

"Special Archery Seasons" means seasons that delineate the dates and hunt areas for the taking of big game or trophy game animals with legal archery equipment, in which a hunter with the proper hunting license and an archery license may hunt in addition to the regular hunting seasons in accordance with the limitations as set forth in Section 3 of Chapters 5 (Antelope), 6 (Deer), 7 (Elk), 8 (Moose), Sections 4 and 8 of Chapter 9 (Bighorn Sheep and Mountain Goat) and Section 11 of Chapter 3 (Black Bear).

"State Trust Land" means lands administered by the Office of State Lands and Investments.

"Take" means hunt, pursue, catch, capture, shoot, fish, seine, trap, kill, or possess, or attempt to hunt, pursue, catch, capture, shoot, fish, seine, trap, kill, or possess.

"Trophy Game Animal" means black bear, grizzly bear, mountain lion or gray wolves within the Wolf Trophy Game Management Area and Seasonal Wolf Trophy Game Management Area as described in W.S. § 23-1-101 (a)(xii)(B) (I) and (II).

"Type" means a limitation on a license in a particular hunt area for the sex of animal, the species of animal, the length of the season, the type of weapon or a portion of the hunt area in which the license shall be valid.

"Waste" means to leave, abandon or allow any edible portion of meat from a big game animal, game bird, game fish or small game animal to become tainted, rotten or otherwise unfit for human consumption prior to processing at a person's home or at a processor.

"Youth License" means:

- A big game license that may be issued to a resident or nonresident person who is at least eleven (11) years of age and less than eighteen (18) years of age at the time of application. If issued to a person who is eleven (11) years of age, the license shall not be valid until the licensee reaches their twelfth (12th) birthday.
- For all other species, excluding furbearing animals, a license that may be issued to a resident or nonresident person who is less than eighteen (18) years of age.
- A furbearer trapping license that may be only issued to a resident less than seventeen (17) years of age.

DISABLED HUNTER INFORMATION. Contact the Cheyenne Headquarters or any Department Regional Office for specific information.

DUPLICATE AND REPLACEMENT LICENSE ISSUED UPON LOSS OR DESTRUCTION OF ORIGINAL; PURCHASE AND FEES. When any license issued has been lost or destroyed, the licensee may secure a duplicate of the original license from the Cheyenne Headquarters, any Department Regional Office or designated license selling agents. A duplicate license shall be issued if the original license was issued through the Department's Electronic Licensing Service (ELS) and **contained a carcass coupon**. A replacement license shall be issued if the original license was issued through the Department's ELS system and **did not contain a carcass coupon**. The licensee may secure a replacement license at the Cheyenne Headquarters, Department Regional Offices or from ELS agents. The Department shall charge a fee of five dollars (\$5) for each duplicate or replacement license.

EMERGENCY CLOSURES. The Commission may institute an emergency closure to shorten the season in any area at any time if a harvest quota is reached or if an emergency arises warranting the closure. Should a closure become necessary after the season opens, no refunds will be given for unused licenses.

GUIDES REQUIRED; EXCEPTIONS: ISSUANCE OF RESIDENT GUIDE LICENSE. No nonresident shall hunt big or trophy game animals on any designated wilderness area, as defined by federal or state law, in Wyoming unless accompanied by a licensed professional guide or a resident guide. There shall be at least one (1) licensed professional guide or resident guide accompanying each two (2) nonresident hunters. A resident guide shall not guide more than two (2) hunters in any calendar year. Any resident possessing a valid big or trophy game animal license shall apply for and receive a free resident guide license prior to guiding any nonresident in designated wilderness areas. A resident guide license may be obtained at no charge from the Cheyenne Headquarters, Department Regional Offices and district game wardens.

HARVEST SURVEY. Each year a request to participate in the harvest survey is sent to a sample of hunters. Since a person can hunt multiple species in Wyoming, some hunters may be asked to reply to more than one harvest survey questionnaire. Your reply provides critical data that Department wardens and biologists use to evaluate the past hunting season and set future hunting seasons. Even if you did not hunt, we need to hear from you to track hunter effort. We ask that you reply online, if possible, with your harvest survey information as soon as you are done hunting each species for the year. Your time and assistance is much appreciated.

HUNTER SAFETY/MENTOR PROGRAM; EXCEPTION. Except as otherwise provided, no person born on or after January 1, 1966, may take wildlife by the use of firearms on land other than that

of their own family, unless that person can demonstrate they have obtained a certificate of competency and safety in the use and handling of firearms. Attendance and successful completion of a hunter safety course offered by an association or governmental agency approved by the Commission satisfies the requirements of this section.

Any active member, honorably discharged past member or veteran of the armed forces of the United States and any active or retired Wyoming peace officer qualified pursuant to W.S. § 9-1-701 through § 9-1-707 is exempt from the hunter safety requirements. Hunter safety exemption applications are available at the Cheyenne Headquarters and Department Regional Offices. This hunter safety exemption is not valid for hunting elk within Grand Teton National Park (Hunt Areas 75 and 79), or for persons acting as mentors in the Hunter Mentor Program.

A person who has not received a certificate of competency and safety in the use of handling firearms may apply to the Department for a special authorization to take wildlife with the use of a firearm while being accompanied by a person acting as a mentor. A special authorization shall be valid for one (1) year from the date of issue and shall be in the possession of the recipient at all times while in the field. The application process may be completed on the Department website. Any person acting as a mentor shall be at least eighteen (18) years of age, shall possess a valid hunting license, and shall demonstrate they have successfully completed a hunter safety course. A mentor shall not provide supervision for more than one (1) person at a time in the field, other than immediate family members, and shall accompany the mentee at all times to provide constant supervision.

ISSUANCE OF FULL PRICE ANTELOPE LICENSES AND REDUCED PRICE DOE/FAWN LICENSES. For antelope, no person shall apply for and receive more than one (1) full price antelope license (Type 0, 1, 2, 3, 4, 5 or 9) through the initial drawing. After the initial drawing is completed, any person may apply for and receive up to two (2) full price antelope licenses. However, no person shall apply for and receive more than a total of two (2) full price antelope licenses.

For antelope, any person may apply for and receive a maximum of two (2) limited quota reduced price doe/fawn antelope licenses (Type 6, 7 or 8) through the initial drawing. After the initial drawing is completed, any person may purchase up to four (4) limited quota reduced price doe/fawn antelope licenses. However, no person shall apply for and receive more than a total of four (4) limited quota reduced price doe/fawn antelope licenses.

It is a violation to apply for and receive more than the specified number of licenses allowed by Commission regulations.

LANDOWNER COUPONS. Antelope, deer and elk licenses shall have two (2) coupons attached: one (1) designated "antelope, deer or elk carcass coupon" and one (1) designated "landowner's coupon". When an antelope, deer or elk is harvested on a landowner's private land, the landowner's coupon shall be promptly detached, dated, signed and delivered to the landowner. Landowner's coupons are not transferable.

LEGAL FIREARMS FOR HUNTING BIG OR TROPHY GAME ANIMALS. When hunting **bighorn sheep, elk, moose, mountain goat or black bear** with a firearm, a hunter shall use any center-fire firearm of at least .24 caliber and firing a cartridge of at least two (2) inches in overall length. When hunting **antelope, deer, or mountain lion, or gray wolf** where designated as a trophy game animal, a hunter shall use any center-fire firearm of at least .22 caliber (*excluding .22 Hornet*) and having a bullet weight of at least sixty (60) grains and firing a cartridge of at least two (2) inches in overall length.

Big or trophy game animals may be taken with any other cartridge of at least .35 caliber and at least one and one-half (1.5) inches in overall length, or any shotgun firing "00" or larger buckshot, or a slug. Any muzzle-loading rifle or muzzle-loading handgun of at least .40 caliber using a charge of at least fifty (50) grains of black powder or its equivalent may also be used to hunt big or trophy game animals. Any center-fire firearm or muzzle-loading firearm used to hunt big or trophy game animals shall fire an expanding point bullet.

Wyoming has no restrictive laws concerning firearms that may be legally possessed under the law of one's home state. Firearms may be carried uncased in vehicles; although safety dictates that all firearms in a vehicle should be unloaded with the action open.

LICENSE FRAUD PROHIBITED, INVALIDATION BY IMPROPER FEES. Department licenses, permits, stamps, tags or coupons shall not be altered by anyone other than authorized Department personnel. No license, permit, stamp, tag or coupon shall be transferred or used for the purpose of taking wildlife except by the individual to whom it was issued and therein named and while in that individual's possession. No individual shall take or attempt to take any wildlife using another individual's license, permit, stamp, tag or coupon. Any license, tag, permit or stamp shall not be valid unless the proper fees have been received by the Department. Any Wyoming Game and Fish law enforcement officer may seize as evidence any license, tag, stamp or permit that was obtained in violation of Commission regulations or Wyoming statutes.

OPEN HOURS FOR TAKING BIG GAME AND TROPHY GAME ANIMALS. Big game and trophy game animals may only be taken from one-half (1/2) hour before sunrise to one-half (1/2) hour after sunset.

OUTFITTER INFORMATION. Hunter responsibility when booking a big or trophy game outfitter or professional guide. No person shall directly or indirectly compensate a person holding themself out as engaging in the business of, or acting in the capacity of, an outfitter or a professional guide unless that person provides proof that they are a licensed outfitter or professional guide as required by statute. Before hiring an outfitter, the Department advises hunters to consult the Wyoming State Board of Outfitters and Professional Guides to verify the outfitter is licensed by the state of Wyoming. Landowners who outfit on their own deeded land, or deeded lands leased to them, are not required to be licensed as outfitters or guides. Contact: Wyoming State Board of Outfitters at 1950 Bluegrass Circle #280, Cheyenne, Wyoming, 82002 or call toll free 1-800-264-0981. Any license holder utilizing the services of an outfitter shall legibly print the name of the outfitter, the outfitter's license number and the type of outfitter license on the back of licensee's big or trophy game license.

PERMISSION TO HUNT, FISH OR TRAP. No person shall enter upon the private property of any person to hunt, fish or trap without the permission of the landowner or person in charge of the property. The license must bear the signature of the landowner, lessee or agent of the landowner on whose private property the person is accessing or the legitimate proof as evidence that permission to hunt, fish or trap has been granted.

PRECAUTIONS WHEN HUNTING IN AREAS OCCUPIED BY GRIZZLY BEARS. Hunters and anglers are reminded that grizzly bears occupy many areas in and around the Bridger-Teton, Shoshone and Caribou-Targhee National Forests in northwest Wyoming. The Department strongly recommends individuals working and recreating in these areas take precautions, including carrying bear pepper spray, to avoid conflicts with grizzly bears. Information about human safety and proper storage of food and other attractants in occupied grizzly habitat is available from the Cheyenne Headquarters, Department Regional Offices, U.S. Forest Service Offices and the Department website. Regulations concerning food/carcass storage in occupied grizzly habitat can be obtained from the U.S. Forest Service. Report all conflicts with grizzly bears to the nearest Department Regional Office.

PROHIBITED ACTS. IT IS ILLEGAL TO:

- Shoot or attempt to kill any wildlife from any public road or highway. No person shall fire any firearm from, upon, along or across any public road or highway. No person shall knowingly fire any rifle from the enclosed lands of one person onto or across the enclosed lands of another without the permission of both persons.
- Use any dog to hunt, run or harass any big or trophy game animal, protected animal or furbearing animal except as otherwise provided by statute. The Commission shall regulate the use of dogs to take mountain lions and bobcats during hunting or trapping seasons.
- Use any aircraft with the intent to spot, locate and aid in the taking of any game animal from August 1 through January 31 of the following calendar year. Nothing in this Section shall apply to the operation of an aircraft in a usual manner where there is no attempt or intent to locate any game animal, such as aircraft used for the sole purpose of passenger transport.
- Take and leave, abandon or allow any game bird, game fish or game animal (except trophy game animal), or edible portion, to intentionally or needlessly go to waste.
- Transport illegally taken wildlife across state lines; such transportation is a violation of the Federal Lacey Act.
- Place any bait for the purpose of taking a big game animal or knowingly take a big game animal by the use of bait, except as authorized by Commission regulation or state statute.
- Allow the edible portions of a big game animal to spoil. Failure to properly dress and care for any big game animal you have killed and, if the carcass is reasonably accessible, within forty-eight (48) hours to take or transport the carcass to your camp, and there properly care for the carcass is prima facie evidence of a violation.
- Abandon meat from a big game animal or game bird at a meat processing plant. Unless there is an express agreement between the processing plant and the person providing otherwise, any meat from a big game animal or game bird left at a meat processing plant for more than forty-five (45) days is prima facie evidence of a violation if written notice of the expiration of time has been attempted by the processing plant in accordance with rules and regulations promulgated by the Commission.
- Carry a firearm with a cartridge therein, or take any wildlife, while intoxicated or under the influence of any controlled substance.
- Harass, pursue, hunt, shoot or kill any Wyoming wildlife except predatory animals with, from or by use of any flying machine, automotive vehicle, trailer, motor-propelled wheeled vehicle or vehicle designed for travel over snow. The Commission may exempt handicapped hunters from any of these provisions. It is also illegal to shoot waterfowl from a boat under power or sail.

RETENTION OF EVIDENCE TO IDENTIFY SEX, SPECIES AND HORN OR ANTLER DEVELOPMENT OF BIG GAME ANIMAL HARVESTED. Any person who takes any big game animal in a hunt area where the taking of either sex, species, or antler or horn development is controlled or prohibited by regulation shall comply with this section while said animal is in transportation from the site of the kill to the residence of the person taking the animal, or delivered to a processor for processing.

(a) In hunt areas where the taking of any big game animal is restricted to antler point or horn size by regulation, the antlers or horns shall accompany the carcass, or edible portions thereof.

(b) In hunt areas where the taking of any big game animal is restricted to a specific sex of animal by regulation, either the visible external sex organs, head or antlers shall accompany the carcass, or edible portions thereof.

(c) In hunt areas where the taking of a species of deer is controlled or prohibited by regulation, either the head or the tail of the deer shall accompany the animal or edible portion thereof as evidence of the species taken.

RETRIEVAL OF EDIBLE PORTIONS OF GAME MEAT FROM THE FIELD. The Department may require substantive proof from any person who fails to retrieve from the site of kill all edible portions of a big game animal as to why the edible portions were not removed from the field.

SHIPPING GAME ANIMALS OUT OF STATE. Except as otherwise exempt by state statute, no game animal or game bird, or any part thereof, shall be shipped or transported from the state except by the person who harvested the animal, and in possession of the proper license, stamp and carcass coupon as required, or unless the amount does not exceed twenty-five (25) pounds and is properly tagged with a Wyoming interstate game tag. Not more than twenty-five (25) pounds from any one (1) big or trophy game animal may be exported from the state unless the part to be exported from the state is of a nonedible trophy or hidelike nature and properly tagged with a Wyoming interstate game tag or the big or trophy game animal was legally harvested by a nonresident and is tagged with a Wyoming interstate game tag.

SHIPPING GAME ANIMALS WITHIN WYOMING. Except as otherwise exempt by state statute, no person shall ship, transport or receive for shipment or transportation within Wyoming any game animal, game bird, or any part thereof, unless tagged with a Wyoming interstate game tag, or unless the transportation of a big or trophy game animal is by a person in possession of a proper carcass coupon signed and dated by the person who harvested the animal, or the transportation of game birds or small game is by a properly licensed hunter in possession of not more than the daily bag or possession limit.

TAKING PREDATORY ANIMALS AND PREDACIOUS BIRDS. Predatory animals and predacious birds may be taken without a license.

VEHICLE RESTRICTIONS ON FEDERAL LAND. Sportspersons are advised that many areas of National Forest and Bureau of Land Management lands are subject to travel and vehicle use limitations to protect resources. Maps and additional information regarding these limitations are available at U.S. Forest Service, Bureau of Land Management and other agency offices near these public lands.

WILDERNESS AREAS. Nonresident big game and trophy game hunters must be accompanied by a professional or resident guide when hunting in designated wilderness areas.

WILDLIFE DAMAGE MANAGEMENT STAMP. The Wyoming Legislature created the Wyoming Animal Damage Management Board to manage rabid wildlife, mitigate crop and livestock damage caused by depredating wildlife, and to protect human health and safety. The legislation developed several sources of funding for the Board to carry out its responsibilities including the creation of a WILDLIFE DAMAGE MANAGEMENT STAMP. Those interested in funding the activities of the Board may voluntarily purchase the stamp at the Cheyenne Headquarters, Department Regional Offices and all license selling agents. Purchase of the stamp is not mandatory, but does provide sportspersons a voluntary means to fund predator management.

WILDLIFE VIOLATOR COMPACT. Wyoming is a member of the Wildlife Violator Compact. The Compact enables a violator from any member state to accept a wildlife citation and proceed on their way without being required to post an appearance bond unless the violation requires MUST APPEAR and NO BOND ACCEPTED. The Compact provides for the suspension of wildlife license privileges in the home state of any person whose license privileges have been suspended by a participating state. If you have had your privileges suspended in any of the participating states, you may lose your privileges in Wyoming, in addition to all the participating Compact states. Additional information about the Compact can be obtained by contacting the Wildlife Law Enforcement Coordinator at (307) 233-6413.

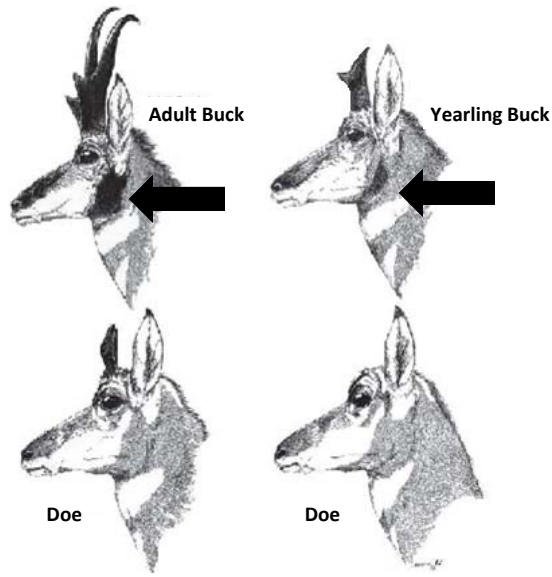
WIND RIVER RESERVATION. Only non-Indian owned, fee title lands are open to the taking of wildlife with a Wyoming license. Land status is complicated and lawful access must be investigated thoroughly. Sportsmen are advised it is their responsibility to determine land status prior to entering these areas.

SEXING ANTELOPE

LOOK FOR THE CHEEK PATCH!

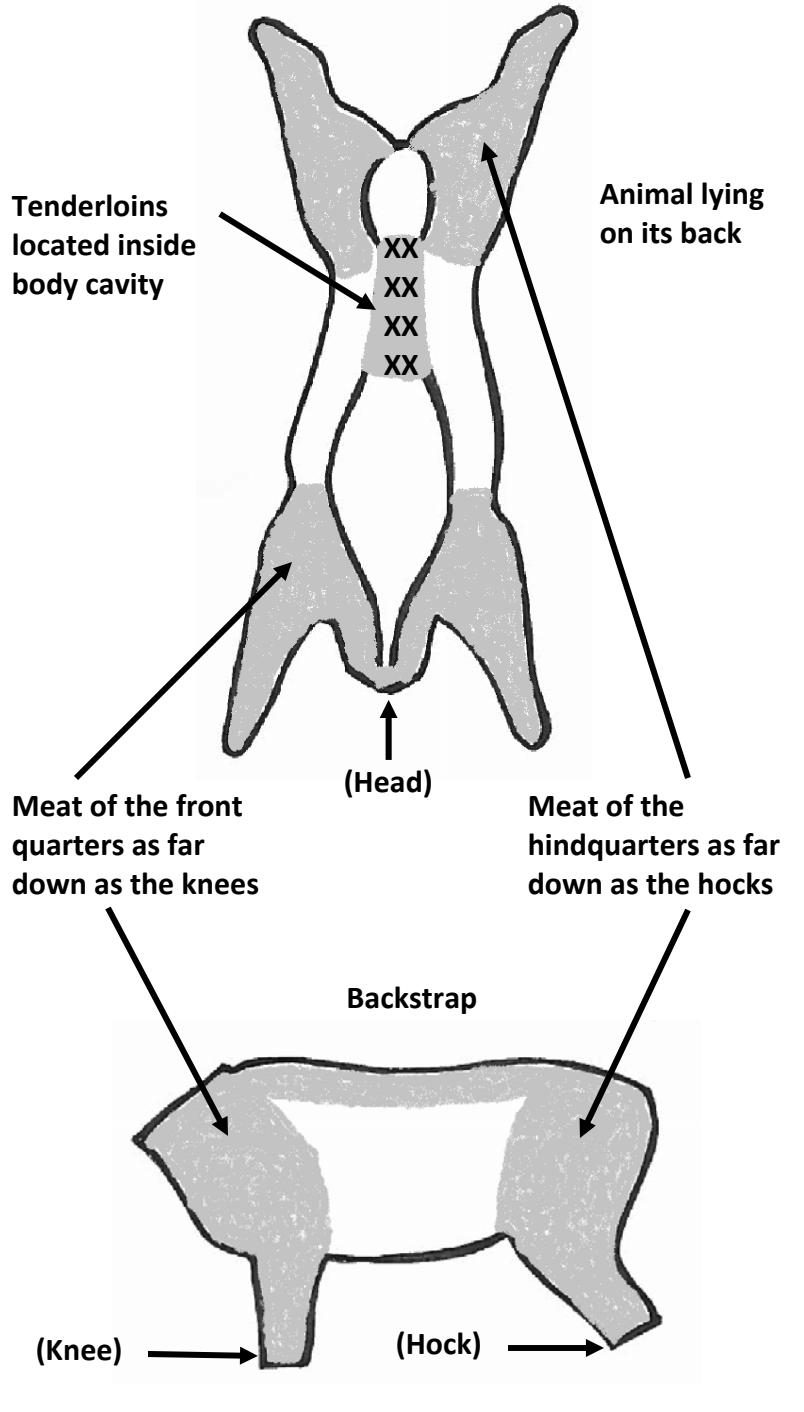
The ability to distinguish between buck and doe antelope is critical to hunters holding licenses valid only for does and fawns and to those hunting in areas where only buck antelope are legal quarry.

- Adult bucks are easily distinguished by their long, black horns, which extend beyond the tips of the ears, and by the black cheek patch below the ear at the angle of the jaw.
- Yearling bucks have shorter horns, usually about as long as the ears, but they also have the distinguishing black cheek patch.
- Females often grow horns, which occasionally grow to the length of the ears, but they lack the black cheek patch.
- Even among fawns, which usually lack visible horns, the black cheek patches distinguish males from females.



Edible Portions of Big Game

Shaded areas encompass edible portions



How to Fill Out a Carcass Coupon

IMMEDIATELY AFTER Harvesting a Big Game Animal and BEFORE LEAVING the Site of the Kill Detach from License

Cut out the entire day of the kill
Sign carcass coupon
Cut out the entire month of the kill

2016 WYOMING CARCASS COUPON LICENSE # 14111069181

VALID IN HUNT AREA: _____

DETACH FROM LICENSE, DATE BY CUTTING OUT ENTIRE DAY AND MONTH OF KILL, SIGN AND ATTACH TO CARCASS IN A VISIBLE MANNER BEFORE LEAVING SITE OF KILL. DURING TRANSPORTATION OF THE CARCASS, THE COUPON MAY BE REMOVED TO PREVENT ITS LOSS. IF THE COUPON IS REMOVED FOR TRANSPORTATION, IT MUST BE IN THE POSSESSION OF THE PERSON ACCOMPANYING THE CARCASS.

DOB: _____

DO NOT SIGN OR DETACH BEFORE YOU KILL THE ANIMAL

IMMEDIATELY AFTER Harvesting a Big Game Animal and BEFORE LEAVING the Site of the Kill Detach from License

Cut out the entire month of the kill
Cut out the entire day of the kill
Sign carcass coupon

2016 WYOMING CARCASS COUPON

LICENSE # 16400695091

After harvest of animal and prior to leaving the site of the kill, detach carcass coupon from license. validate by cutting out the entire wedge for day and month of harvest, sign and attach to carcass in a visible manner. During transportation of the carcass, the carcass coupon may be removed to prevent its loss. If the coupon is removed for transportation, it must be in the possession of the person accompanying the carcass.

(DO NOT SIGN Before Harvest of Animal)

NONREFUNDABLE/NONTRANSFERABLE HUNT AREA: _____ TYPE: _____

SIGNATURE OF LICENSEE: _____

Contact Information	In-State Toll Free #	Out-of-State Phone #
Cheyenne Headquarters	1-800-842-1934	1-307-777-4600
Casper Regional Office	1-800-233-8544	1-307-473-3400
Cody Regional Office	1-800-654-1178	1-307-527-7125
Green River Regional Office	1-800-843-8096	1-307-875-3223
Jackson Regional Office	1-800-423-4113	1-307-733-2321
Lander Regional Office	1-800-654-7862	1-307-332-2688
Laramie Regional Office	1-800-843-2352	1-307-745-4046
Pinedale Regional Office	1-800-452-9107	1-307-367-4353
Sheridan Regional Office	1-800-331-9834	1-307-672-7418

For more information and materials call: 1-307-777-4600 or visit the Department website.

Report All Wildlife Violations!




Text keyword
WGFD
and message to
TIP411
(847-411)



Help us Stand Watch 1-877-WGFD-TIP

(1-877-943-3847)
Out-of-State **(1-307-777-4330)**

Submit Tip Online: <http://wgfd.wyo.gov/law-enforcement/stop-poaching>



Thank you!
Wyoming Landowners

DONATE TO ACCESS YES

The Access Yes Program provides hunting and fishing access to nearly 2.8 million acres. Every dollar donated to Access Yes equals 3.5 acres of access for YOU! Donate today by calling (307) 777-4600 or when you purchase or apply for licenses.

The Wyoming Game and Fish Department receives federal financial assistance in Sport Fish and Wildlife Restoration. Under Title VI of the 1964 Civil Rights Act, Section 504 of the Rehabilitation Act of 1973, Title II of the Americans with Disabilities Act of 1990, the Age Discrimination Act of 1975, and Title IX of the Education Amendments of 1972, the U.S. Department of the Interior prohibits discrimination on the basis of race, color, national origin, age, sex, or disability. If you believe that you have been discriminated against in any program, activity, or facility as described above, or if you desire further information, please write to:

Department of Interior—U.S. Fish and Wildlife Service—Division of Human Resources
4401 North Fairfax Drive—Mail stop: 2000—Arlington, Virginia 22203