

WY Early Intervention

Wyo Dept of Health,
Developmental
Disabilities Division,
Early Intervention and
Education Program

Special points of interest:

- > SEAS Training
- > OSEP Visit
- > Child Development Centers
- > Contact Info

New Web-Based Data System for Wyoming CDCs

The first two weeks of August will see personnel from all Child Development Centers participating in training for a new web-based data system. Special Education Automation Software will be the primary avenue for input of all information pertaining to IFSPs and IEPs for children birth to 5 years throughout Wyoming's 14 regions.

SEAS will be replacing the older Citrix system with the benefit of being able to be accessed through the world wide web. With a simple logon, users can enter a child's information on any required Part C or Part B/619 form. SEAS is also much more user friendly than Citrix.

From this information, endless reports can be generated as well as tracking the progress of the child. Local providers all the way up to the state and federal level can enter, edit,



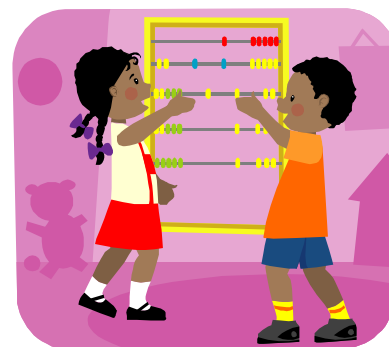
and read information. All HIPAA regulations are still adhered to, but collaboration can increase.

The training will be held throughout Wyoming at various cities from Cheyenne to Gillette

to Powell to Green River. Local community colleges are hosting many of the trainings with the use of their computer labs.

Registration for the trainings has been a huge success causing many of the sites to be over booked. The 14 regions all have several people taking advantage of the free training provided by the Department of Health's Developmental Disabilities Early Intervention and Education Program.

All regions should be proficient and utilizing SEAS by the end of August. SEAS also offers an online tutorial for users not able to attend a training with their SEAS University courses.



OSEP Verification Visit

The Office of Special Education Programs has notified the Early Intervention and Education Program they will be on site in Cheyenne doing a verification visit the week of September 27—October 1st.

They will be focusing on three main areas: General Supervision, Fiscal Operations, and Data. It will take approximately 5 days to

complete the verification visit at which time they will return a final report with any findings.

The monitoring document OSEP is using to base their visit on is the Critical Elements Analysis Guide (CrEAG) This 22 page checklist asks various questions about how Part C and Part B/619 is ran and what documentation supports the answers. Every-

thing from how state monitoring is done to data collecting to how funds are dispersed/used is part of the CrEAG verification.

The final day of the visit is a massive conference call between OSEP, EIEP, and the 14 regions across the state and their stake holders. EIEP and OSEP have already been exchanging information in preparation for the visit.

Inside this issue:

SEAS System	1
OSEP Visit	1
CDC Map	2
CDC Regions	2
Contact Information	2

Wyoming Regional Child Development Centers

Birth through Age 5

Region 1
Children's Resource
Center
307-587-1331

Region 2
Child Development
Center
307-672-1610

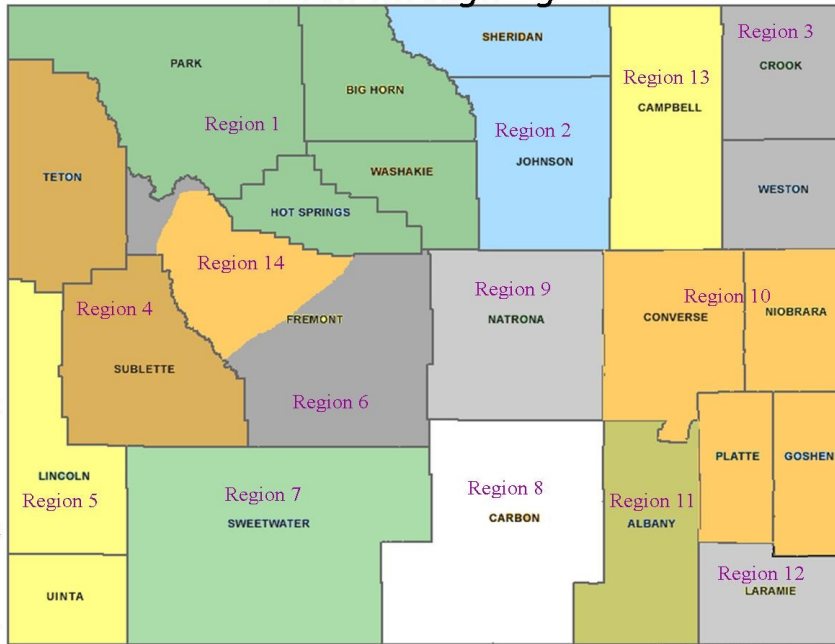
Region 3
Weston County
Children's Center
307-746-4560

Region 4
The Children's
Learning Center
307-733-1616

Region 5
Lincoln Uinta Child
Development
Association
307-782-6602

Region 6
Child Development
Services of Fremont
County
307-332-5508

Region 7
Sweetwater County
Child Development
Center
307-875-0268



Copyright 2005 digital-topo-maps.com

Region 8
Project Reach Early
Intervention and
Preschool Center
307-324-9656

Region 9
Child Development
Center of Natrona
County
307-235-5097

Region 10
Wyoming Child and
Family Development,
Inc.
307-836-2751

Region 11
Developmental Pre-
school and Day Care
Center
307-742-6374

Region 12
STRIDE Learning
Center
307-632-2991

Region 13
Children's
Developmental
Services of Campbell
County
307-682-2392

Region 14
Early Intervention
Program-Wind River
Reservation
307-332-3516

WY Early Intervention



1-877-WYO-GROW

Child Development Centers Provide Early Intervention

Across Wyoming are 14 regions represented by 42 facilities serving the needs of children with disabilities from birth through age 5. Some regions have just one county while others cover multiple counties.

These centers locate, identify and evaluate children in this age range for developmental disabilities, work with the parents on a plan to meet their individual needs which could be therapeutic or supportive in a wide variety of areas.

The Early Intervention and Edu-

cation Program with the DD has supervisory responsibility over each Child Development Center



(CDC) to insure services are provided and the Individuals with

Disabilities Education Act is complied with.

All eligible children have an Individual Family Service Plan (IFSP) if they're less than 3 years old or an Individual Education Plan (IEP) if they're 3 years or older. This plan is developed with the parents and many different personnel at the CDC. It outlines the services the child will be receiving free of charge.

With these services it is the hope that children receive early intervention to best meet their needs while developing.

The Early Intervention and Education Program at the Developmental Disabilities Division provides assistance and oversight to the regional child development centers that serve young children, from birth through 5 years of age, with disabilities and their families across Wyoming.

We're on the web!

<http://health.wyo.gov/ddd/earlychildhood/index.html>



Wyoming
Department
of Health

Commit to your health.

Developmental Disabilities
Division, Early Intervention
and Education Program
6101 Yellowstone, Suite 186E
Cheyenne WY 82002

Telephone: 307-777-7115
Fax: 307-777-6047

Please send any suggestions for
content you would like to see
such as: websites, TA help,
Q&A topics, etc.

Rodney.wilhelm@health.wyo.gov