

Wyoming Department of Health Strategic Plan Annual Report

General information

Agency name:	Wyoming Department of Health
Director's name and official title:	Michael Ceballos, Director
Agency Contact person:	Franz Fuchs, Policy Analyst / Legislative Liaison
Agency Contact phone:	307-777-2865
Mailing address:	401 Hathaway Building Cheyenne, WY 82002
Web address (URL):	http://www.health.wyo.gov/default.aspx
Statutory References:	W.S. 9-2-101-108
Clients Served:	All Wyoming residents (e.g. emergency preparedness) Medicaid members Senior citizens (Title III programming)
Expenditures (FY 20):	\$997,134,511

Mission

The mission of the Wyoming Department of Health is to promote, protect, and enhance the health of all Wyoming residents. For the purpose of the 2014 – 2020 Strategic Plan, the Department of Health defines these terms specifically:

Promote: Encourage healthy behaviors and develop healthier communities for all Wyoming residents.

Protect: Maintain Wyoming's emergency response capability in the face of public health threats and reinforce Wyoming's rural health care infrastructure to ensure day-to-day access to cost-effective, quality care.

Enhance: Provide quality and cost-effective health services and supports to vulnerable and at-risk groups.

Organization

The Department of Health has four operational divisions and is supported by administrative functions provided by the Director's Office. These divisions are:

The **Division of Health Care Financing** includes the Medicaid program, Waiver Services, Pharmacy Services, and Kid Care CHIP.

The **Behavioral Health Division** includes Mental Health and Substance Abuse Services, the Wyoming Life Resource Center, and the Wyoming State Hospital.

The **Public Health Division** includes the Community Health, Health Readiness and Response and Public Health Sciences Sections.

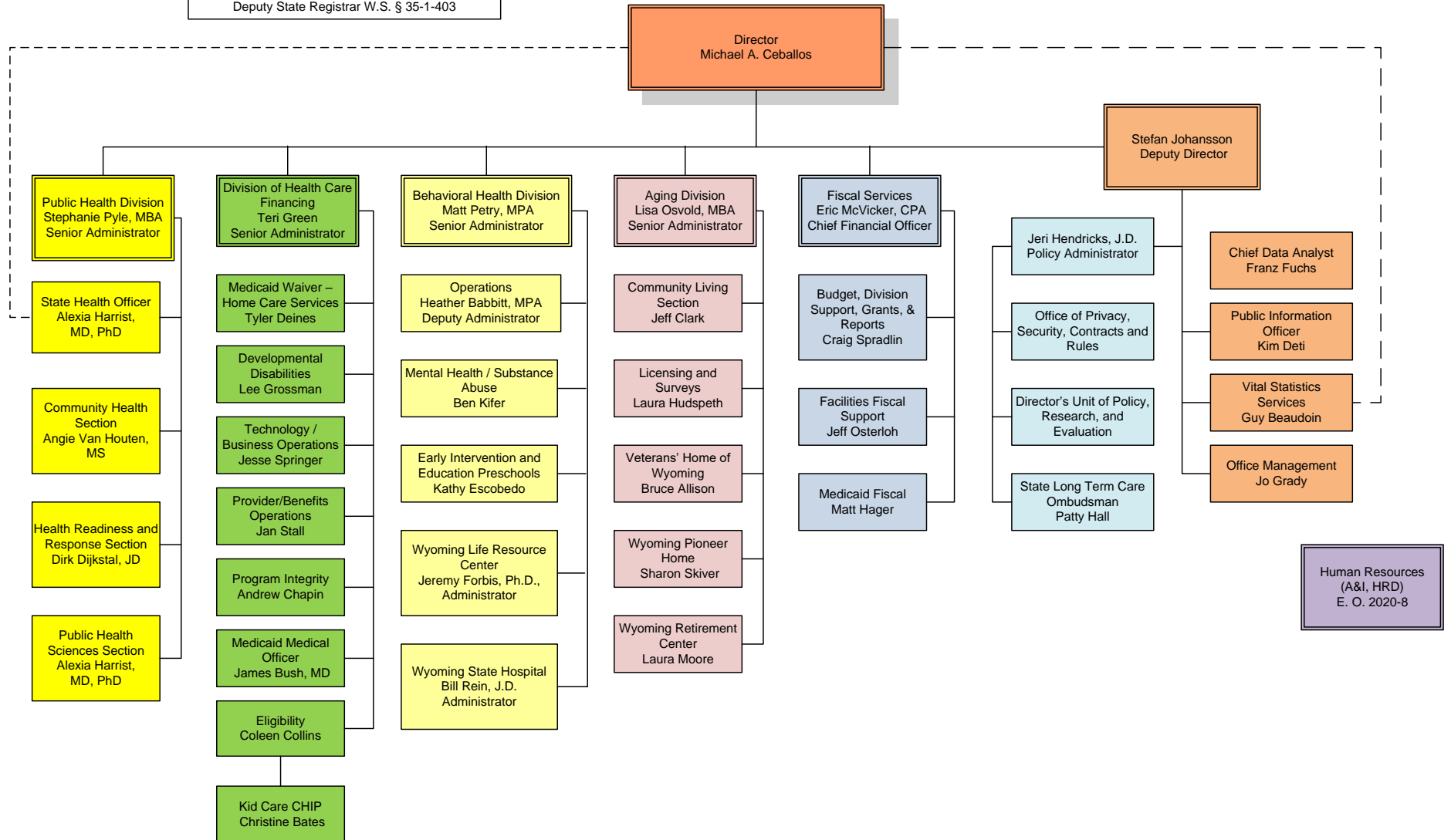
The **Aging Division** includes Senior Services, Health Care Licensing and Surveys, the Veterans' Home of Wyoming, Wyoming Pioneer Home, and the Wyoming Retirement Center.

The **Director's Office** includes Fiscal Services, Public Information Officer, Contracts, Privacy and Security, Human Resources, Vital Statistics Services, and the Director's Unit for Policy, Research, and Evaluation.

The largest division in terms of expenditures is Health Care Financing, followed in descending order by Behavioral Health, Public Health, Aging and the Director's Office. An organizational chart follows on the next page.



Michael A. Ceballos, Director
Effective August 3, 2020
_____ denotes direct reporting
----- reporting designated by W.S.S.
State Health Officer W.S. § 9-2-103(e)
Deputy State Registrar W.S. § 35-1-403



Wyoming Department of Health Priorities | 2014 – 2020

Priority 1(a): Medicaid reform. Improve outcomes for Medicaid recipients while containing health care costs.

Goal A: Increase the degree of coordinated care for Medicaid recipients in order to improve health outcomes.

Objectives

(i) Increase the percent of Medicaid recipients registered with a Patient-Centered Medical Home to **50%** by 2020, from a 2012 baseline of 0%.

Year	2014	2015	2016	2017	2018	2019	2020
Percent of Medicaid Recipients in Tier III Medical Home	0%	3%	13%	21%	25%	24%	19%
Target	10%	20%	30%	40%	50%	50%	50%

Source: Wyoming Medicaid

(ii) Increase the percent of Medicaid recipients with Severe and Persistent Mental Illness (SPMI) or Severe Mental Illness (SMI) registered with a Behavioral Health Home to **75%** by 2020, from a 2012 baseline of 0%.

Year	2012	2013	2014	2015	2016	2017	2018
Percent with SPMI/SMI registered with a Health Home	0%	0%	0%	0%	0%	0%	*
Target	0%	0%	15%	30%	45%	60%	75%

Source: Wyoming Medicaid

* Note that this program was intended to be implemented as part of a broader mental health modernization effort, which has been postponed indefinitely. There will be no further progress on this indicator.

(iii) Increase the percent of eligible hospitals installing Electronic Health Record (EHR) systems and meeting meaningful use requirements to **100%** by 2020, from a 33% baseline in 2013.

Year	2014	2015	2016	2017	2018	2019	2020
Percent of eligible hospitals meeting meaningful use	52%	85%	92%	96%	96%	96%	96%
Target	44%	58%	72%	86%	100%	100%	100%

Source: Wyoming Medicaid

(iv) Decrease Medicaid 30-day hospital readmissions to **5.8%** by 2020, from a 6.3% baseline in 2012, and compared with a national average of 8.3% (2013).

Year	2014	2015	2016	2017	2018	2019	2020
Medicaid 30-day hospital readmissions		8.4	7.8	7.6	8.0	8.1	7.3
Target	6.1	6.0	5.9	5.8	5.8	5.8	5.8
National Average	*	*	*	*	*	*	*

Source: Wyoming Medicaid

* Data not available

(v) Increase the percent of clients, with claims over \$50,000, who are enrolled in case management to **85%** by 2020, from a 2013 baseline of 21%.

Year	2012	2013	2014	2015	2016	2017	2018
Percent of High-Cost Clients in Case Management	0	21	18	16.5	*	*	*
Target	0	21	33.8	46.6	59.4	72.2	85

Source: Wyoming Medicaid

* Discontinued measure due to shift to risk-based intensive care coordination (WySUP)

(vi) Decrease emergency department visits to **50 per 1,000 member-months** by 2020, from a 2012 baseline of 59.7.

Year	2014	2015	2016	2017	2018	2019	2020
ER Visits per 1,000 Member-Months	64.7	64.7	65.2	66.4	67.9	66.1	52.8
Target	60.4	57.8	55.2	52.6	50	50	50

Source: Wyoming Medicaid

(vii) Decrease inpatient admissions to **11.6 per 1,000 member-months** by 2020, from a 2011 baseline of 12.4.

Year	2014	2015	2016	2017	2018	2019	2020
Inpatient Admissions per 1,000 Member-Months	15.8	14.9	15.5	15.3	15.3	14.7	13.6
Target	12.1	11.9	11.8	11.7	11.6	11.6	11.6

Source: Wyoming Medicaid

Goal B: Maintain Medicaid health care costs.

Objectives

(i) Maintain Wyoming Medicaid average per-person costs at **less than \$7,000** through 2020.

Year	2014	2015	2016	2017	2018	2019	2020
Average Per-Recipient Annual Cost	\$6,782	\$7,007	\$7,416	\$7,331	\$7,662	\$8,088	\$7,273
Target	\$7,000	\$7,000	\$7,000	\$7,000	\$7,000	\$7,000	\$7,000

Source: Wyoming Medicaid

Year	2014	2015	2016	2017	2018	2019	2020
Average Per Member Per Month	\$611	\$586	\$685	\$711	\$710	\$746	\$747

Source: Wyoming Medicaid

** Data not yet available*

Priority 1(b): Medicaid reform. Redesign the Developmental Disabilities (DD) and Acquired Brain Injury (ABI) waivers to increase access to waiver services for eligible residents within the approved budget.

Goal A: Expand access to cost-effective care in the least restrictive setting for Wyoming residents with developmental disabilities or acquired brain injuries.

Objectives

(i) Reduce the waitlists by **100-300** eligible citizens by 2020 through improved efficiencies and program redesign.

Year	2013	2014	2015	2016	2017	2018	2019	2020
Adult DD/Comp. Waitlist	214	238	0	0	0	0	0	0
Adult Supports Waitlist			57	25	36	69	117	117
Child DD/Comp. Waitlist	220	277	0	0	0	0	0	0
Child Supports Waitlist			138	137	98	172	238	265
ABI Waitlist	64	82	24	20	13	20	0	0
Total Waitlist	498	597	219	182	147	261	355	382
Target Waitlist		475	275	275	275	275	275	275

Source: Behavioral Health Division

(ii) Maintain the average per-recipient cost for the Comprehensive DD waiver at less than **\$65,000** through 2020.

State Fiscal Year	2014	2015	2016	2017	2018	2019	2020
Adult DD Average Cost	\$59,276	-	-	-	-	-	-
Child DD Average Cost	\$16,432	-	-	-	-	-	-
ABI Average Cost	\$40,758	\$50,143	\$53,513	\$48,746	\$47,940	-	-
Comprehensive Adult		\$64,574	\$64,950	\$67,380	\$72,409	\$76,118	\$75,822
Comprehensive Child		\$23,252	\$25,963	\$27,825	\$34,584	\$36,475	\$36,617
Supports Adult		\$19,622	\$19,793	\$20,662	\$21,840	\$22,058	\$22,124
Supports Child		\$15,727	\$16,006	\$16,376	\$18,506	\$18,953	\$18,932
Target	\$65,000	\$65,000	\$65,000	\$65,000	\$65,000	\$65,000	\$65,000

Source: Wyoming Medicaid

Goal B: Increase the quality of care provided to home- and community-based waiver recipients.

Objectives

(i) Decrease the average annual number of medication errors per recipient to **0.4** by 2020, a 20% decrease from the 2013 baseline of 0.5 (1219 medication errors / 2359 waiver recipients).

Year	2014	2015	2016	2017	2018	2019	2020
Annual Average Medication Errors per Recipient	0.62	0.12	0.21	0.11	0.36	0.40	0.38
Target	0.48	0.45	0.43	0.40	0.40	0.40	0.40

Source: Behavioral Health Division

(ii) Decrease the average annual number of restraints per recipient to **0.7** by 2020, a 20% decrease from the 2013 baseline of 0.9 (2173 restraints / 2359 waiver recipients).

Year	2014	2015	2016	2017	2018	2019	2020
Annual Average Restraints per Recipient	1.85	0.50	0.29	0.12	0.06	0.03	0.86
Target	0.85	0.80	0.75	0.70	0.70	0.70	0.70

Source: Behavioral Health Division

(iii) Decrease the average annual number of restrictions per recipient to **6.0** by 2020, a 20% decrease from the 2013 baseline of 7.4 (18,164 restrictions / 2359 waiver recipients).

Year	2014	2015	2016	2017	2018	2019	2020
Annual Average Restrictions per Recipient	8.1	4.5	7.3	7.9	9.2	12.9	8.5
Target	7.05	6.7	6.35	6	6	6	6

Source: Behavioral Health Division

(iv) Increase the percent of adult waiver recipients employed to **56%** by 2020, a 20% increase from the 2013 baseline of 46% (635/1360).

Year	2014	2015	2016	2017	2018	2019	2020
Percent of Recipients Employed	44	37	33	27	33	35	29
Percent of Recipients in Competitive, Integrated Employment	9	17	17	17	19	18	15
Target	48.5	51	53.5	56	56	56	56

Source: Behavioral Health Division

(v) Increase the percent of adult waiver recipients living in a place they own or lease to **24%** by 2020, a 10% increase from the 2013 baseline of 21.5% (293/1360).

Year	2014	2015	2016	2017	2018	2019	2020
Percent Living in a Place They Own or Lease	29	27	27	30	30	30	29
Target	22	22.7	23.3	24	24	24	24

Source: Behavioral Health Division

Priority 1(c): Medicaid reform. Redesign long-term care services to increase access to waiver services for Wyoming residents within the approved budget.

Goal A: Provide access to quality and cost-effective home and community-based options.

Objectives

(i) Increase the percent of elderly and physically disabled citizens receiving long-term care waiver supports in home and community based settings instead of institutional settings to **52.5%** by 2020, from a current 2012 baseline of 46.5%.

Year	2014	2015	2016	2017	2018	2019	2020
Percent receiving support in the community	48.6	51.5	53.2	54.1	56.0	58.3	60.1
Target	47.7	49.0	50.2	51.5	51.5	52.5	52.5

Source: Wyoming Medicaid

(ii) Decrease the number of people on the waitlist for ALF/LTC waivers to **0** by 2020, from a 2013 baseline of 38 and 67, respectively.

Year	2012	2013	2014	2015	2016	2017	2018
Number on ALF Waitlist	23	38	22	Waitlist eliminated			
Number on LTC Waiver Waitlist	98	67	7				
Total	121	105	29				
Target	121	105	78	52	26	0	0

Source: Wyoming Medicaid

(iii) Maintain the annual average total cost for Assisted Living Facility waiver and Long Term Care waiver recipients at less than **60%** of nursing home costs through 2020.

Year	2014	2015	2016	2017	2018	2019	2020
ALF Percent of SNF	49%	46%	46%	43%	45%	43%	38%
LTC Percent of SNF	49%	46%	48%	42%	45%	43%	38%
Target	60%	60%	60%	60%	60%	60%	60%

Source: Wyoming Medicaid

Goal B: Provide access to quality and cost-effective institutional care to those in need.

Objectives

(i) Maintain the annual average cost for nursing home residents at less than **\$35,000** through 2020, from the 2012 baseline of \$30,423.

Year	2014	2015	2016	2017	2018	2019	2020
Average Annual Cost of ALF Waiver	\$14,826	\$15,328	\$13,809	\$14,853	\$15,592	\$15,875	\$16,031
Average Annual Cost of LTC Waiver	\$14,793	\$15,165	\$14,445	\$14,676	\$15,592	\$15,875	\$16,031
Average Annual Nursing Facility Cost	\$30,361	\$33,251	\$30,262	\$34,788	\$37,258	\$36,658	\$42,006
Target	\$35,000	\$35,000	\$35,000	\$35,000	\$35,000	\$35,000	\$35,000

Source: Wyoming Medicaid

(ii) Increase the percent of nursing facilities with tele-health capacity to **75%** by 2020, from a current baseline of 19%.

Year	2014	2015	2016	2017	2018	2019	2020
Percent of SNFs with tele-health	43.2	43.2	43.2	100	100	100	100
Target	33	47	61	75	75	75	75

Source: Wyoming Medicaid

Priority 2: Redesign Wyoming’s mental health and substance abuse system to improve outcomes for recipients while increasing federal and private insurance financial participation.

Goal A: Improve outcomes for Wyoming citizens with Serious and Persistent Mental Illness (SPMI) and Serious Emotional Disturbances (SED).

Objectives

(i) Increase the percent of individuals with SPMI who are employed to **53%** by 2020 from a 2012 baseline of 43.5%.

Year	2014	2015	2016	2017	2018	2019	2020
Percent with SPMI who are employed	53.0	40.3	61.6	60.4	61.8	62.1	58.2
Target	45.2	47.2	49.1	51.1	53.0	53.0	53.0

Source: Wyoming Client Information System (WCIS)

(ii) Increase the percent of individuals with SPMI in stable housing to **96%** by 2020, from a 2012 baseline of 95.1%.

Year	2014	2015	2016	2017	2018	2019	2020
Percent of individuals with SPMI in stable housing	97.0	96.0	97.2	96.9	97.6	96.7	97.7
Target	95.0	95.3	95.5	95.8	96.0	96.0	96.0

Source: Wyoming Client Information System (WCIS)

(iii) Increase the percent of children and youth with SED attending school to **95%** by 2020, from a 2013 baseline of 90.4%.

Year	2014	2015	2016	2017	2018	2019	2020
Percent of children with SED attending school	90.4	94.1	95.6	96.6	95.6	96.2	96.4
Target	90.4	91.4	92.3	93.2	94.1	95.0	95.0

Source: Wyoming Client Information System (WCIS)

(iv) Decrease the 5-year Psychiatric Residential Treatment Facility readmission rate to **20%** by 2020, from a baseline of 33% in 2014.

Year	2014	2015	2016	2017	2018	2019	2020
PRTF re-admission rate	33%	34%	32%	28%	31%	30%	*
Target	20%	20%	20%	20%	20%	20%	20%

Source: Wyoming Medicaid

* *Data not yet available*

Note that, while re-admission rates are increasing, admission rates are decreasing; this measure therefore reflects a smaller and more acute pool of children.

Goal B: Increase federal and private insurance participation in the MH/SA system.

Objectives

(i) Increase the percent of Community Mental Health Center revenue coming from billing Medicaid and private insurance to **60%** by 2020, from a 2013 baseline of 31.4%.

Year	2014	2015	2016	2017	2018	2019	2020
% MH revenue from Medicaid and private insurance	31.7	39.1	51.3	55.1	50.3	49.5	42.9
Target	37.1	42.8	48.5	54.3	60.0	60.0	60.0

Source: Wyoming Client Information System (WCIS)

Year	2014	2015	2016	2017	2018	2019	2020
% SA revenue from Medicaid and private insurance	16.0	21.5	25.9	24.5	25.8	22.0	17.1
Target	25.8	34.4	42.9	51.5	60.0	60.0	60.0

Source: Wyoming Client Information System (WCIS)

Priority 3: Focus on Wyoming’s significant public health problems to improve the overall health of Wyoming residents and communities.

Goal A: Reduce smoking.

Objectives

(i) Decrease the adult smoking rate to **19%** by 2020, from a 2012 baseline of 21.8% and compared with a national average of 17.8%.

Year	2014	2015	2016	2017	2018	2019	2020
Adult smoking rate	19.5	19.1	18.4	18.7	18.8	18.2	*
95% Confidence Interval – Upper	21.4	20.9	21.0	20.3	20.4	20	*
95% Confidence Interval – Lower	17.6	17.5	16.0	17.2	17.3	16.6	*
Target	21	20	20	19	19	19	19
National average	18.1	17.8	17.1	16.4	16.1	*	*

Source: Wyoming Behavioral Risk Factor Surveillance System

** Data not yet available*

Goal B: Reduce the harmful effects of alcohol in the State.

Objectives

(i) Decrease the percentage of binge drinking in Wyoming to **14%** by 2020, from a 2012 baseline of 17% and compared to a national average of 16.9%.

Year	2014	2015	2016	2017	2018	2019	2020
Percent reporting binge drinking	17.2	16.0	18.0	18.0	17.4	17.5	*
95% CI – Upper	19.2	17.2	20.7	19.7	19.0	19.3	*
95% CI – Lower	15.3	13.9	15.6	16.5	15.9	15.9	*
Target	16.4	15.8	15.2	14.6	14.0	14.0	14.0
National average	16.0	16.3	16.9	17.4	16.2	*	*

Source: Wyoming Behavioral Risk Factor Surveillance System

** Data not yet available*

(ii) Decrease the percent of alcohol-related fatal crashes to **30%** by 2020, from a 2012 baseline of 34% and compared with a national average of 31%.

Year	2014	2015	2016	2017	2018	2019	2020
Percent of alcohol-related fatal crashes	34%	37%	29%	33%	32%	26%	*
Target	32%	31%	31%	30%	30%	30%	30%

Source: Wyoming Department of Transportation

* *Data not yet available*

Goal C: Reduce deaths by suicide.

Objectives

(i) Decrease Wyoming's suicide rate to less than **22 per 100,000** by 2020, from a 2012 baseline of 29.5 per 100,000 and compared to a national average (2011) of 12.3 per 100,000.

Year	2014	2015	2016	2017	2018	2019	2020
Suicide rate (per 100,000)	21.0	26.2	24.2	26.8	25.6	29.4	*
Target	28.0	26.5	25.0	23.5	22.0	22.0	22.0
National average	12.9	13.2	13.4	14.0	14.8	*	*

Source: Vital Statistics, CDC

* *Data not yet available*

Priority 4: Maintain Wyoming's emergency response capability.

Goal A: Maintain the State's ability to respond to public health emergencies.

Objectives

(i) Maintain the **15 minute** Immediate After-Hours assembly time for the Department of Health Incident Management Team through 2019.

Year	2014	2015	2016	2017	2018	2019	2020
Immediate After-Hours Assembly Time	10	15	13	23	6	8	*
Target	15	15	15	15	15	15	15

Source: Public Health Division

** Data not available*

(ii) Increase the average county Technical Assistance Review score to **90%** by 2019, from a 2013 baseline of 84.1%.

Year	2013	2014	2015	2016	2017	2018	2019
Average county Technical Assistance Review score	84.1	93.7	93.5	97.6	*	*	*
Target	84.1	85.3	86.5	87.6	88.8	90.0	*

Source: Public Health Division

** Measure discontinued in favor of qualitative score ("Established" being the target for 2020)*

Goal B: Increase readiness of county and local first responders.

Objectives

(i) Increase the reliability of standard response times (< 9 minutes) for Wyoming ambulance services to **90%** or higher by 2019, from a 2013 baseline of 48%.

Year	2014	2015	2016	2017	2018	2019	2020
Response times < 9 minutes	53.0	54.3	68.8	68.0	67.6	79.4	65.7
Target	56.4	64.8	73.2	81.6	90.0	90.0	90.0

Source: Wyoming Ambulance Trip Reporting System (WATRS)

Priority 5: Strengthen Wyoming’s rural health care infrastructure to ensure access to appropriate, cost-effective, quality care.

Goal A: Increase the density, capacity, and quality of Wyoming’s rural health care infrastructure.

Objectives

(i) Decrease the number of counties with primary care physician FTE deficits as assessed by the Rural Health Works (RHW) model to **9** or lower by 2019, from a 2013 baseline of 11.

Year	2014	2015	2016	2017	2018	2019	2020
Counties with primary care physician FTE deficits	*	*	11	20	*	*	*
Target	9	9	9	9	9	9	9

** Note: Data not available*

(ii) Maintain the percentage of medical providers accepting Medicaid at **99%** (2011 baseline) through 2018, ensuring Wyoming remains #1 in the nation on this measure (national average of 69%).

Year	2014	2015	2016	2017	2018	2019	2020
Percent of providers accepting Medicaid clients	99	99	99	99	99	99	99
Target	99	99	99	99	99	99	99
National average	69	69	69	*	*	*	*

Source: Wyoming Medicaid

** CDC National Ambulatory Medical Care Survey Electronic Medical Records Supplement, 2011 and Health Affairs. Cited in Kaiser Health News (<http://www.kaiserhealthnews.org/stories/2012/august/06/third-of-medicare-doctors-say-no-new-patients.aspx>). No update since 2011.*

(iii) Increase the percent of licensed, active dentists enrolled with Wyoming Medicaid to **80%** by 2019 from a 2014 baseline of 75%.

Year	2014	2015	2016	2017	2018	2019	2020
Percent of active dentists accepting Medicaid	75	78	79	79	72	63	65
Target	75	76	77	78	80	80	80

Source: Wyoming Medicaid

Goal B: Increase Wyoming residents' access to health care.

Objectives

(i) If the legislature determines a Medicaid expansion is in the best interests of the State, the Department of Health aims to decrease the percent of Wyoming residents 18-64 years old who are uninsured to below **16%** by 2018, from a 2011 baseline of 20.8% and compared with a national average of 21.1%.

Year	2014	2015	2016	2017	2018	2019	2020
Percent of Wyoming residents 18-64 uninsured	17.1	15.5	12.6	12.4	13.8	*	*
Target	19.2	18.4	17.6	16.8	16.0	16.0	16.0
National average	14.0	13.2	12.1	12.2	12.1	*	*

Source: US Census Small Area Health Insurance Estimates

* *Data not available*

Priority 6: Enhance the continuum of long-term care options for the elderly to support healthy aging in the most appropriate setting.

Goal A: Increase the number of elderly who are staying active in their communities.

Objectives

(i) Reduce the percent of low-care nursing home residents to **below 12%** by 2020, from a 2013 baseline of 19.2%.

Year	2014	2015	2016	2017	2018	2019	2020
Percent of low-care SNF residents	19.2	19.2	15.2	15.9	15.4	15.4	12.8
Target	17.7	16.3	14.9	13.4	12.0	12.0	12.0
National average	12.2	12.2	11.8	11.7	11.7	11.9	9.8

Source: Data from Americas Health Rankings.

(ii) Increase the percent of Wyoming's elderly (60+) minority population served by Title III programs to **40%** by 2020.

Year	2014	2015	2016	2017	2018	2019	2020
Percent of 60+ minorities served	10.1	8.6	9.7	8.5	11.0	14.0	17.0
Target	27.2	32.0	35.0	37.0	40.0	40.0	40.0

Source: Aging Division, US Census

* Data not available

(iii) Increase the percent of Wyoming's elderly residents (60+), at or below 100% of the federal poverty level, served by Title III programs to **95%** by 2020

Year	2014	2015	2016	2017	2018	2019	2020
Percent of 60+ below 100% FPL served	74.9	64.8	59.1	52.2	42.0	45.0	45.0
Target	93.4	93.8	94.2	94.6	95.0	95.0	95.0

Source: Aging Division, US Census

* Data not available

(iv) Increase the percent of Wyoming's elderly residents (60+), living alone, served by Title III programs to **40%** by 2020.

Year	2014	2015	2016	2017	2018	2019	2020
Percent of 60+ living alone served	20.7	20.4	21.5	19.4	27.0	26.0	27.0
Target	32.8	34.6	36.4	38.2	40.0	40.0	40.0

Source: Aging Division, US Census

* Data not available

Priority 7: Support the health of Wyoming children.

Goal A: Improve early childhood outcomes.

Objectives

(i) Decrease the percent of babies born preterm (<37 weeks) to **8.6%** by 2020, from a 2012 baseline of 9.0% and compared with a national average (2013) of 9.6%.

Year	2014	2015	2016	2017	2018	2019	2020
Percent born preterm (< 37 weeks)	11.0	11.0	10.0	8.9	9.8	9.8	*
Target	8.9	8.8	8.8	8.7	8.6	8.6	*
National average	9.6	9.6	9.9	9.9	*	*	*

Source: Vital Statistics

* *Data not yet available*

(ii) Reduce the infant mortality rate to **4.5 deaths per 1,000 live births** by 2020, from a 2012 baseline of 5.1 deaths per 1,000 births.

Year	2014	2015	2016	2017	2018	2019	2020
Infant mortality rate	6.4	5.1	5.0	4.6	5.2	6.1	*
Target	5.0	4.9	4.7	4.6	4.5	4.5	4.5

Source: Vital Statistics

* *Data not yet available*

(iii) Increase the percent of women reporting initiating breastfeeding to **83.6%** by 2020, from a 2011 baseline of 81.6% and compared with a national average of 76.9%.

Year	2014	2015	2016	2017	2018	2019	2020
Percent of women reporting initiation of breastfeeding	84.1	82.6	82.4	83.0	81.3	87.8	*
Target	82.0	82.4	82.8	83.2	83.6	83.6	83.6
National average	79.2	*	*	83.4	*	*	*

Source: Vital Statistics

(iv) Decrease the proportion of women who smoke in the last three months of pregnancy to **12%** by 2020, from a 2012 baseline of 15.9% and compared with a national average of 12.8%.

Year	2014	2015	2016	2017	2018	2019	2020
Percent who smoke in last three months of pregnancy	14.4	13.5	11.2	10.0	11.6	*	*
Target	12.8	12.6	12.4	12.2	12.0	12.0	12.0
National average	*	*	*	*	*	*	*

Source: Vital Statistics and CDC Pregnancy Risk Assessment Monitoring System

** Data not yet available*

(v) Increase childhood immunization coverage level (4:3:1:3:3:1) to **75%** by 2020, from a 2012 baseline of 68.8% and compared with a national average of 71.6%.

Year	2013	2014	2015	2016	2017	2018	2019
Percent of children receiving 4:3:1:3:3:1 series	70.0	64.0	73.3	62.8	72.0	72.6	*
Target	71.6	72.0	72.4	72.9	73.3	73.7	75%
National average	70.4	71.6	72.2	70.7	72.0	*	*

Source: National Immunization Survey

** Data not yet available*

Goal B: Increase children's access to health care.

Objectives

(i) Reduce the percent of Wyoming children uninsured to **7.9%** by 2019, from a 2012 baseline of 9.2% and compared with a national average of 5%.

Year	2013	2014	2015	2016	2017	2018	2019
Percent of children uninsured	7.0	6.7	8.0	8.2	8.8	6.3	*
Target	8.1	8.1	8.0	8.0	7.9	7.9	7.9
National average	7.5	7.5	6.3	5	4.7	5	

Source: Small Area Health Insurance Estimates (US Census)

** Data not yet available*

(ii) Increase the percent of Medicaid children receiving at least one initial or periodic Early Prevention Screening Detection and Treatment (EPSDT) to **above 65%** by 2020, from a 2012 baseline of 44%.

Year	2014	2015	2016	2017	2018	2019	2020
% receiving one EPSDT screen	44	43	47	50	52	52	*
Target	48	52	56	60	65	65	65

Source: Wyoming Medicaid

* *Data not yet available*

Goal C: Increase healthy behavior in children and adolescents.

Objectives

(i) Reduce the percentage of teens smoking at least one cigarette in the last month to **21.3%** by 2020 from the 2011 baseline of 22% and compared with a national rate of 18.1%.

Year	2013	2014	2015	2016	2017	2018	2019
Percent of high school students smoking at least one cigarette in the last month		16.1		12.2		10.8	*
Target	22.0	21.9	21.7	21.6	21.4	21.3	21.3
National average	15.7	15.7	10.8	*	*	*	*

Source: Prevention Needs Assessment

(ii) Reduce the birth rate for mothers between the ages of 15-19 to **30 births per 1000** by 2020, from a 2012 baseline of 33.7 births per 1000 and compared with the national average of 31.3 births per 1000.

Year	2014	2015	2016	2017	2018	2019	2020
Rate of birth (per 1,000) for teens 15-19 years	30.6	29.0	26.5	24.6	20.7	19.4	*
Target	33.0	32.2	31.5	30.7	30.0	30.0	30.0
National average	24.2	22.3	20.3	18.8	*	*	*

Source: Vital Statistics, CDC FastStats, Teen Births

* *Data not available*