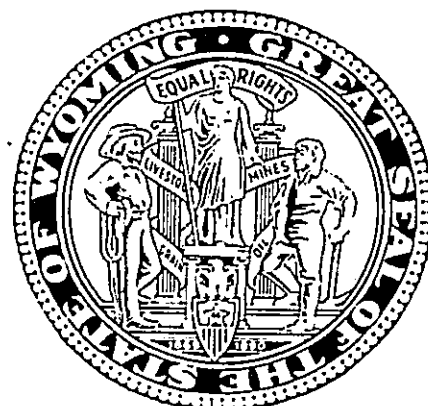


COPY 1  
DO NOT CIRCULATE

# STATE OF WYOMING

1994



## ANNUAL REPORT of the LIQUOR COMMISSION

July 1, 1993 Through June 30, 1994

Dept. of Admin. & Info.  
WYOMING STATE LIBRARY  
201 Capitol Avenue  
Supreme Court & State Library Bldg  
Cheyenne, WY 82002-0060

### TABLE OF CONTENTS

	<u>PAGE</u>
Introduction .....	1
Objectives and Accomplishments .....	2-9
Organization Chart and Personnel Listings .....	10-12
Annual Case Sales Report .....	13
Gallonage Report .....	13
Balance Sheet - June 30, 1994 .....	14
Profit and Loss Statement July 1, 1993 - June 30, 1994 .....	15
Remittances to State Treasurer .....	16
License and Permit Types .....	17
Licensee List by County .....	18-46
County Malt Beverage Permits .....	47-52
Malt Beverage Wholesalers .....	53
Microbrewery Permits .....	53
Liquor Purchases by Vendor .....	54-60

## THE COMMISSION

The Honorable Mike Sullivan, Governor ..... President  
The Honorable Kathy Karpan, Secretary of State ..... Vice President  
The Honorable Dave Ferrari, State Auditor ..... Secretary  
The Honorable Stan Smith, State Treasurer ..... Member  
The Honorable Diana Ohman, Superintendent of Public Instruction ..... Member

## OFFICIALS

Thomas E. Lopez ..... Director  
George A. Dubrowski ..... Assistant Director

## WYOMING LIQUOR COMMISSION

CHEYENNE, WYOMING

### INTRODUCTION

The Wyoming Liquor Commission (WLC) derives its authority from Chapter 117, Session Laws 1935 as amended, which states:

"The Commission is the exclusive wholesale distributor and seller of alcoholic liquor within Wyoming. It is granted the sole right to sell alcoholic liquors at wholesale, and no licensee or permittee who is granted the right to sell, distribute or receive alcoholic liquor at retail shall purchase any alcoholic liquors from any source other than the Commission."

The Commission members are the Governor, Secretary of State, State Treasurer, State Auditor and Superintendent of Public Instruction.

Because of the business aspect of the Liquor Commission, in that it is a wholesaler of products which can generate a profit (or a loss) for the State, the Commissioners have tended to treat this Agency accordingly and have excluded it from political overtones. This has ultimately aided the success of the Liquor Commission.

Generally, the Wyoming Liquor Commission is charged with the statutory responsibility of: 1) Being the exclusive wholesale distributor and seller of alcoholic liquor (not including malt beverages) within Wyoming; 2) Promulgating rules and regulations as it considers necessary to carry out the Wyoming Statutes; 3) Directing inspections and other investigations as it considers necessary for compliance of the law and the rules and regulations of the Commission; 4) Collecting all excise taxes provided by the Wyoming Statutes relating to alcoholic and malt beverages to deposit in the General Fund; and 5) Licensing and issuing of permits for the following: Wholesale Malt Beverage Distributors, Manufacturers or Rectifiers of alcoholic liquors or malt beverages; Commercial Importers, Railroads and Supplier Representatives.

# WYOMING LIQUOR COMMISSION

## CHEYENNE, WYOMING

### OBJECTIVES AND ACCOMPLISHMENTS

#### OBJECTIVES

The purpose of the Wyoming Liquor Commission is to provide the best possible Wyoming Alcohol Beverage Control Services. Toward that end, the commission has set three Primary Objectives:

- . To provide cost effective distribution services and be responsive to the needs of the population served in a socially responsible manner,
- . To insure licensee compliance with liquor laws, and
- . To provide maximum revenues to the State General Fund.

Activities being conducted to meet those objectives include:

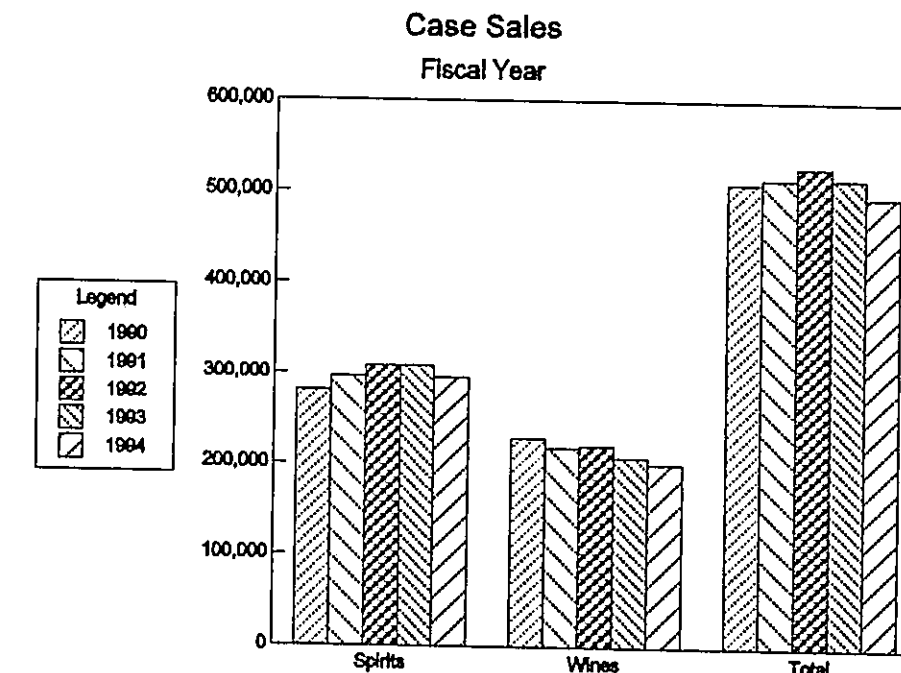
- . Maintaining and enhancing warehouse selection and inventory,
- . Endorsing Special Purchase Allowances (SPA) for licensees,
- . Maintaining and enhancing efficiency of distribution,
- . Maintaining as low wholesale prices as possible thru proper buying procedures,
- . Converting "dead stock" merchandise back into dollars,
- . Promulgating rules and regulations as appropriate,
- . Conducting/Directing investigations to determine compliance levels,
- . Providing enforcement of liquor laws thru local enforcement agencies,
- . Maintaining and enhancing efficiency of agency operations,
- . Maintaining timely cash flow,
- . Maintaining proper inventory turnover levels,
- . Maintaining low breakage/loss levels, and
- . Remitting excise taxes and net earnings in a timely manner.

#### BACKGROUND

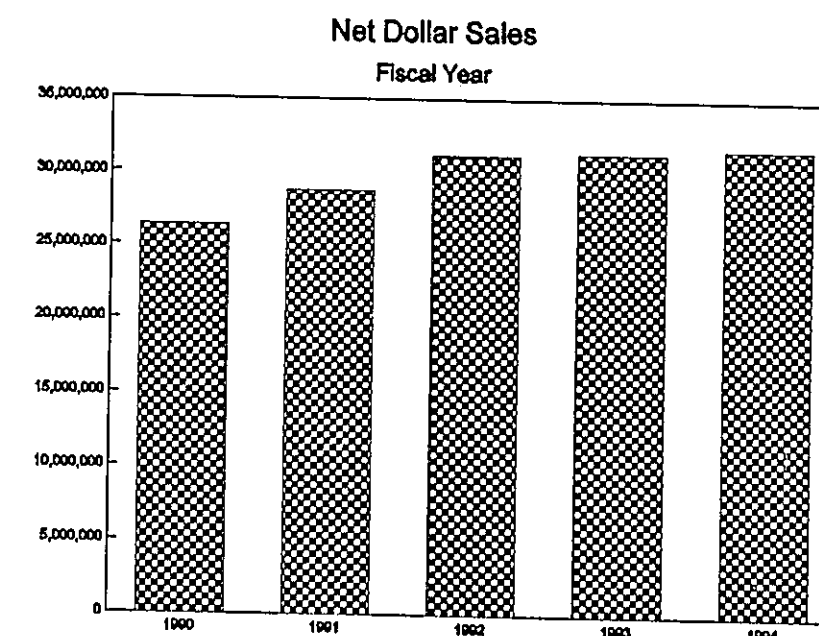
The Wyoming Liquor Commission fulfills the fundamental requirements of a sound liquor control system. Its dispensary system, at the wholesale level only, is exclusively involved with the purchase and efficient distribution of distilled spirits and wines.

Marketing and merchandising efforts undertaken by Wyoming's privately owned, licensed beverage alcohol retailers directly impact the state's wholesale function and resulting revenues. Public attitudes toward the consumption of beverage alcohol, stricter enforcement of DWI statutes and underage drinking by local law enforcement agencies and a substantial increase in Federal Excise Taxes on January 1, 1991 are additional factors which influenced Wyoming Liquor Commission operational revenues.

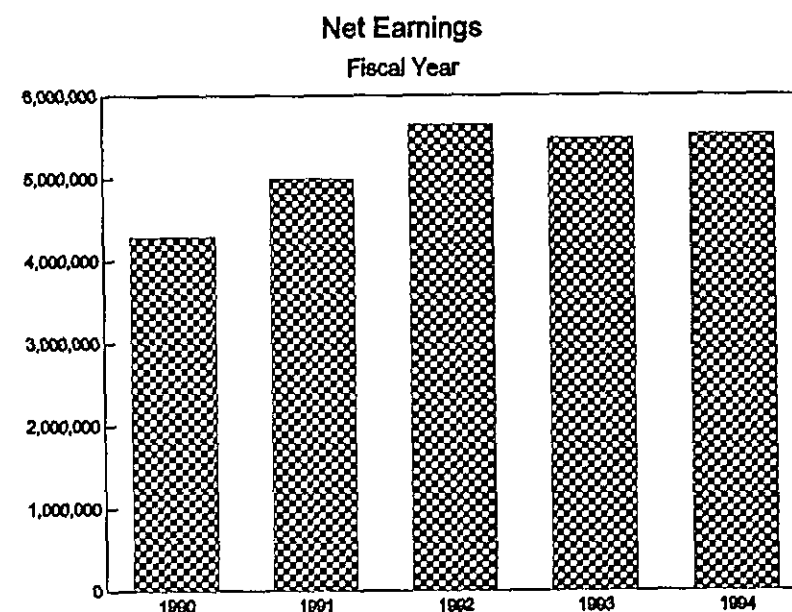
The following graph depicts a case sales history comparison since 1990. Total case sales for FY94 indicate a decrease of 19,999 cases compared to FY93 levels. Spirit case sales showed a decrease of 13,474 cases, wines an increase of 4,298 cases and wine coolers a decrease of 10,823 cases in comparison to FY93 levels. Nonalcoholic wines were introduced as a listed product the latter half of 1993 and accounted for depletions of 505 cases.



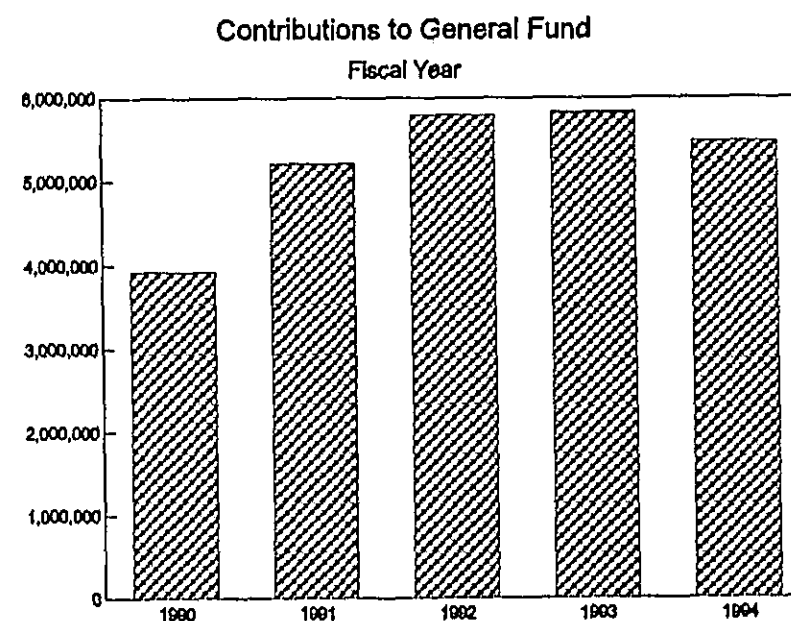
Consumers, and consequently retailers, are continuing a trend that became apparent in late FY91; more dollars are being expended on value and perceived value brands and products. The increased case movement of value products coupled with a moderate price hike at the vendor level produced an increase of \$288,765 in net dollar sales in FY94, a .92 percent increase over FY93 results.



Net Earnings, as depicted in the graph, increased by .69 percent over FY 1993 levels. Net Earnings is the combination of Net Profits and State Excise Taxes collected. State Excise Taxes contribute approximately twenty percent of the net earnings total. State Excise Taxes have remained constant at 1935 levels with distilled spirits taxed at ninety five cents (.95) per gallon, wines at twenty eight cents (.28) per gallon and malt beverages at two cents (.02) per gallon.



Contributions to the General Fund during FY94 decreased by 6.3% from FY93 levels. Excise Tax collections and net profits are the two sources from which contributions to the General Fund are derived. All Excise Taxes are transferred monthly to the General Fund. Net Profits are basically transferred monthly also, but amounts are subject to necessary operating capital requirements for the forthcoming month and/or season. It is important to note that the five year average of contributions to the General Fund is 5.2 million dollars while the five year Net Earnings average is 5.1 million dollars. Sound business practices are the key factor in producing this positive result.



## ACCOMPLISHMENTS

### General Fund Remittance

In order to serve the needs of licensees efficiently, the Wyoming Liquor Commission regularly adjusts its purchasing patterns to accurately reflect consumer trends. As noted previously, consumers and licensees alike are shifting to value brands. Demand for premium spirits and ultra premium wines has stabilized. The following table depicts sales, revenues and remittances to the General Fund from FY 1990 through FY 1994.

Fiscal Year	Number of Cases Shipped	Net Sales	Net Earnings	Remitted to General Fund
1990	509,539	26,363,018	4,287,835	3,928,359
1991	514,413	28,748,737	4,990,507	5,213,267
1992	528,253	31,166,406	5,646,207	5,789,430
1993	515,711	31,362,897	5,476,913	5,831,824
1994	495,712	31,651,662	5,514,963	5,466,107

The Wyoming Liquor Commission does not receive any General Fund monies; however, it does generate income which is applied to the Enterprise Fund. From this fund, the agency is authorized to transfer to its budgetary requirement, an allocation as approved by the Legislature. After budget requirements were met, \$26,228,987 has been transferred to the State Treasurer for credit to the General Fund during the past five years.

### Sales Volume

Since many Wyoming licensees are not able to maintain large levels of product inventory, they use the Wyoming Liquor Commission as a "backroom storage" by ordering more frequently and in smaller amounts. There are no limitations on ordering other than a minimum order of 4 cases for weight, and the majority of retailers receive "next day" delivery. This practice creates an increase in the cost of labor and shipping on a per-case basis for the 1627 items presently stocked. Stocking the higher priced items requested by the retailers has also increased dollar sales per case shipped.

Despite inflation, a Federal Excise Tax increase on all beverage alcohol, and in line with the objective of providing improved distribution services to state licensees, the Wyoming Liquor Commission is responsive to the product requirements of retailer and consumer alike.

### Product Selection

From the approximately 1,000 items regularly stocked at the start of 1981, the commission has enhanced its product selection to the present offering of 1,627 items which consist of 775 Distilled Spirits, 822 Wines, 25 Low Alcohol Refreshers, and 5 Wine Coolers. In addition to this large selection of everyday offerings, the Liquor Commission processed 14,313 cases of "Special Ordered" items in FY 1994. The availability of the special order program, with items ordered from all parts of the world, continues to be very popular with the 1,000 licensees and their customers throughout the state.

The California wine pools continue to be an economical and efficient system for both the licensees and the Liquor Commission. Pooling procedures continue to provide an unlimited selection of boutique wines for Wyoming consumers. With the need for more and better wine products, the decision to seek superior pooling facilities in recent years has given the state an added edge on meeting beverage needs with less cost to the consumer and additional revenues to the General Fund.

### Special Services

Manufacturers periodically offer "Special Purchase Allowance" (SPA) savings on specific products to tie in with advertising or other promotional programs. By taking advantage of SPA benefits, the Liquor Commission is able to pass on savings to licensees, which can then be passed on to customers. Those items that meet the criteria are purchased during the month of the manufacturer's allowance and the savings are then passed on the following month to the licensees. Most items offered have been well accepted and the savings to consumers has kept them "shopping at home" instead of in our neighboring states.

The "Sale of the Month" program instituted in 1982, has continued to help reduce "dead stock" merchandise. This program was influential in eliminating the "dead stock"/discontinued merchandise on hand at the beginning of the program, and provides the Liquor Commission with a tool for continuously disposing of merchandise that does not meet satisfactory sales performances.

As a proven method of serving the smaller retailers and of providing all retailers with a greater selection of merchandise, the commission has enlarged the "Split Case" portion of its operation from 245 items in 1980 to 772 items presently available in split case lots - more than 47% of the 1627 items stocked. A by-product of this operation is additional revenue to the commission of \$0.15 per bottle to \$0.75 per bottle because of handling charges involved in the processing of these "less than full case" sales. The following table depicts licensees acceptance of this special service.

<u>Calendar Year</u>	<u>Bottles Shipped</u>
1989	811,278
1990	781,474
1991	751,438
1992	751,040
1993	753,159

Beginning with the November, 1984 Price Book, this "Split Case" opportunity for licensees was improved even further with certain items being available to purchase by the single bottle (presently 240 items). This feature allows smaller retailers to expand their selections of products to their customers without excess inventories, and in turn produces better turnovers of these products for the Liquor Commission.

In lieu of the traditional Holiday Trade Show, previously held in early fall by the licensed State Sales Representatives in conjunction with the Liquor Commission, a Holiday Product Listing is generated internally for statewide retailer distribution. Licensees review the listing of available products, denote their selections on the same form and return the completed list to the Commission's Purchasing Division for processing. The acceptance by licensees of this new methodology is overwhelmingly positive. The benefit to the state is immediate in the fact that the commission only buys the quantity of products ordered by retailers and no excessive product is carried over thereby enhancing inventory turnover levels and revenue margins.

These special services have been beneficial to the commission in meeting its objectives of providing distribution services to beverage licensees and of providing maximum revenues to the State General Fund.

### Computer Services - Inventory Control

Licensees, the beverage alcohol consumers, and ultimately all Wyoming taxpayers, benefit from efficiencies generated by the commission's in-house computer system and inventory control programs.

Updating the central processing unit and increasing its speed and memory capacity has enabled the commission to remain open for business on inventory days since FY90. Previous practices dictated the closure of shipping operations for an entire day every month. Due to commission staff efforts and enhanced computer capabilities, licensees receive uninterrupted order processing, shipping and deliveries an additional twelve days a year from previous years. Another service that is greatly appreciated by retailers is the direct input of telephone orders via staff operated CRT's into the computer. This process greatly reduces processing time and increases accuracy.

A major program derived from the installation of a computer system has been the "Purchase Requirements" monthly report for ordering of merchandise. This report reflects sales performances for individual items, including special orders, for a 15 month period, and compares the most recent 3 months against the same 3 months of the previous year. From this comparison a plus or minus percentage sales trend is established and the future 6 months sales are projected and adjusted on a monthly basis. This has allowed a reduction of inventory levels over the past years with an "out of stock" condition of generally no more than 2-2 1/2%. With the inclusion of many new items available to retailers of the state, this tool will remain invaluable for product ordering and for proper inventory turnover and control.

It has been stated, by many knowledgeable liquor industry people, that approximately 30% of today's alcoholic beverage business is done in new items. This is supported by the Wyoming Liquor Commission's nearly doubling the product selection in the recent years as previously mentioned. To maintain proper inventory levels, without extreme shortages or overages, and to maintain good inventory turnover, the Purchasing/Inventory Control Division has had to be enlarged from 1 person in 1981 to the present day compliment of 6. This was accomplished through better productivity within the commission which allowed for shifting of existing personnel. No new positions were created requiring additional personnel to fill them and the results have been satisfying and profitable.

The computer has also been extremely useful in invoicing and processing of retailer's orders with the future plan of being able to allow orders to be placed and processed any hour of the day by remote computer telephone input. As the retailers of the state become more modern in their operations, this commission must find methods to better accommodate them. The installation of an upgraded computer hardware system in January, 1990 with further enhanced software has resulted in a much faster processing of orders as well as 10 times more storage capacity than before. Because of this upgrade, additional and more comprehensive reports are being derived as well as no "down-time" for inventories as previously mentioned. This upgrade was accomplished through a "lease with option to buy" package at a monthly cost of approximately the same as the old system which required high monthly maintenance costs. The move in November of 1987 of the Liquor Commission's DEC computer and peripherals to an in-house location at the commission warehouse has resulted in less down-time, faster response time, better control and a reduction of repair time; all represent a savings of money which translates to increased general fund contributions.

#### Compliance and Regulation

Some Wyomingites may think that the "singular" reason for the existence of the Wyoming Liquor Commission is to wholesale liquor to Wyoming's liquor licensees. Perhaps that task is the most visible to consumers and retailers alike. Equally important, however, is the regulation of the entire alcoholic beverages industry in the State of Wyoming. The commission is responsible for inspecting the licensed liquor outlets throughout the state to insure the operations are in accordance and full compliance with federal and state laws, and Wyoming Liquor Commission rules and regulations. The goal of the Wyoming Liquor Commission regulatory program is to achieve voluntary compliance with laws, rules and regulations. If the Wyoming Liquor Commission is unable to obtain this compliance from licensees, remedial or corrective action is then initiated through local enforcement agencies and licensing bodies.

The commission presently has 1165 different outlets to inspect in the 23 counties of the state which sell spirits, wines and/or malt beverages, plus giving assistance to Yellowstone National Park when called upon. This large activity requires the two agents to travel approximately 65% of their time and approximately 30,000 miles each per year in the performance of their duties.

The commission also assists local governing bodies in the clarification of State Liquor Laws and Regulations. Infractions are reported to local law enforcement agencies for disposition to insure that alcoholic beverages are responsibly sold and served in Wyoming.

The health, safety and welfare of all Wyoming citizens who patronize licensed liquor establishments is enhanced by the compliance and regulatory activities of this commission.

The Liquor Commission has two (2) permanently assigned vehicles from MVMS. One vehicle is assigned to the Agency, rather than a particular employee, and is used for various administrative and staff functions. These functions include delivery of bank deposits, pick up of some retailers mail orders at Central Mail and occasionally for in or near-town inspections and/or small deliveries or pickup of faulty merchandise for retailers. The second car is assigned to and utilized by the two agents for weekly inspection tours throughout the state.

#### Other Activities

Good communications and rapport are two extremely important requirements between suppliers of products and the purchasers of them. Such is the condition between the Wyoming Liquor Commission, the wholesaler, and the liquor licensees of this state, the retailers. To further the two mentioned requirements, the Director of the Commission, frequently travels throughout the state attending the various Wyoming State Liquor Association meetings, both countywide and statewide, to assist the retailers wherever possible concerning supply problems, service, selection of products, interpretations of state liquor laws and any other matters concerning the Liquor Commission and them. Input as well as constructive criticism is also requested from them during those travels and the results have been very favorable, both for the commission and the retailers.

The State of Wyoming, one of the 19 "Control State" entities, is a member of the National Alcoholic Beverage Control Association Inc. (NABCA). The members of this association meet annually with "Industry" members to share and address common concerns. An example of this is the recently implemented standard labeling of cases which is saving time and money for both Industry and the N.A.B.C.A. states. The N.A.B.C.A. staff supplies comprehensive surveys detailing various policies and procedures utilized by control entities to its membership on an ongoing basis. Additionally, N.A.B.C.A. staff generate timely reports on the status of the alcoholic beverage industry at the national and state levels. The Director of the Wyoming Liquor Commission serves as a duly elected Director of the N.A.B.C.A. Wyoming, through its membership and active participation in the N.A.B.C.A. is able to help influence national policy affecting all control entities.

The Wyoming Liquor Commission is also a member of a "no-dues" paying group called the Northwest Control States and Canadian Provinces. This group consisting of Idaho, Montana, Oregon, Utah, Washington, Wyoming and those provinces of Canada who can attend, meet semi-annually to exchange ideas, concepts, information, etc. and to discuss and seek remedies for common concerns of this northwestern regional area. Although informal, with no officers and no directors, the "host state" conducts the meetings and the break-out work sessions to address common concerns such as warehousing, shipping, accounting, productivity, etc.

**WYOMING LIQUOR COMMISSION MEMBERS**  
 Hon. Mike Sullivan, Governor President  
 Hon. Kathy Karpan, Secretary of State Vice President  
 Hon. Dave Ferrari, State Auditor Secretary  
 Hon. Stan Smith, State Treasurer  
 Hon. Diana Ohman, Supt. of Public Instruction

**WYOMING LIQUOR COMMISSION**

**DIRECTOR**

Thomas E. Lopez

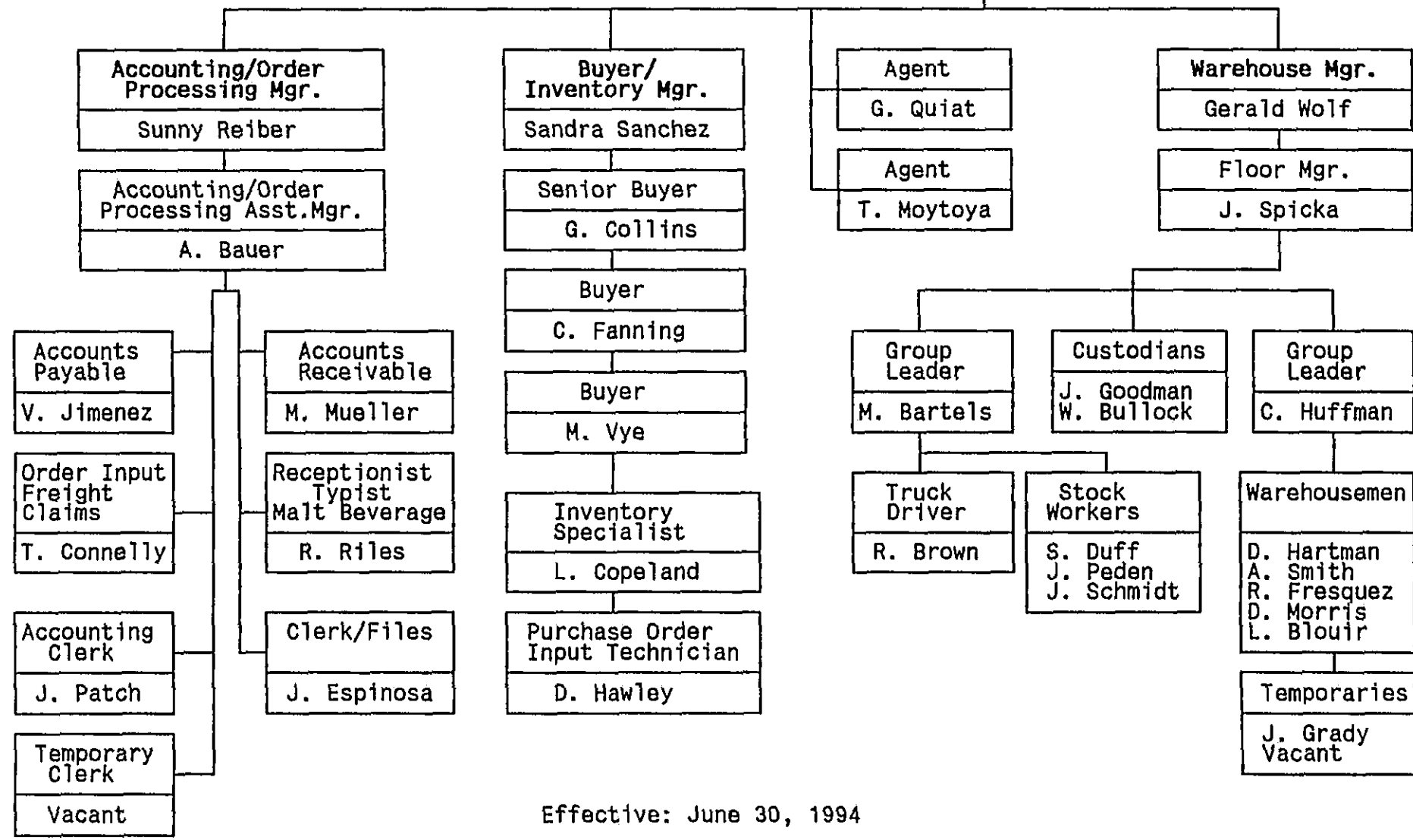
Executive Secretary

A. Webb

**Assistant Director**

George Dubrowski

10



Effective: June 30, 1994



**WYOMING LIQUOR COMMISSION  
CHEYENNE, WYOMING**

**PERSONNEL  
JUNE 1994**

**OFFICE**

Thomas E. Lopez . . . . .	Director
George A. Dubrowski . . . . .	Asst. Director
Sunny Reiber . . . . .	Acctg/Data Processing Manager
Sandra L. Sanchez . . . . .	Buyer/Inventory Manager
Arlis M. Bauer . . . . .	Acctg/Data Processing Asst. Manager
Gayle L. Collins . . . . .	Senior Buyer
Tara Connelly . . . . .	Accounting Clerk
Louise L. Copeland . . . . .	Inventory Specialist
Julia C. Espinosa . . . . .	Accounting Clerk
Corrine S. Fanning . . . . .	Buyer
Debra K. Hawley . . . . .	Accounting Clerk
Vicki R. Jimenez . . . . .	Accounting Clerk
Thomas J. Montoya . . . . .	Agent
Michelle A. Mueller . . . . .	Accounting Clerk
James F. Patch . . . . .	Accounting Clerk
Gerald H. Quiat . . . . .	Agent
Rachel Riles . . . . .	Clerk/Typist
Myrna J. Vye . . . . .	Buyer
Ann Webb . . . . .	Secretary

**WAREHOUSE**

Gerald E. Wolf . . . . .	Warehouse Manager
Joseph L. Spicka . . . . .	Floor Manager
Michael H. Bartels . . . . .	Wrhs. Group Leader
Carl W. Huffman . . . . .	Wrhs. Group Leader
Leslie W. Blouir . . . . .	Warehouseman
Ronald E. Brown . . . . .	Warehouseman
William J. Bullock . . . . .	Custodian
Scott Duff . . . . .	Warehouseman
Raymond L. Fresquez . . . . .	Warehouseman
Jason S. Goodman . . . . .	Custodian, Lead
Joseph E. Grady . . . . .	Warehouseman
David W. Hartman . . . . .	Warehouseman
Dean A. Morris . . . . .	Warehouseman
John L. Peden . . . . .	Warehouseman
Jack J. Schmidt . . . . .	Warehouseman
Aaron C. Smith . . . . .	Warehouseman

\* Temporary

**WYOMING LIQUOR COMMISSION  
CHEYENNE, WYOMING  
July 1, 1993 - June 30, 1994**

**OFFICE PERSONNEL**

Thomas E. Lopez	Commission Director
George A. Dubrowski	Deputy Commissioner
M. Ann Webb	Executive Secretary
Thomas J. Montoya	Compliance Officer
Gerald H. Quiat	Compliance Officer
Sunny J. Reiber	Accounting Supervisor
Arlis M. Bauer	Accountant, Principal
Vicki R. Jimenez	Fiscal Processing Specialist
Debra K. Hawley	Fiscal Processing Technician
Michelle A. Mueller	Fiscal Processing Technician
Tara M. Connelly	Fiscal Processing Worker
James F. Patch	Fiscal Processing Worker
Rachel G. Riles	Technical Records Specialist
Julia C. Espinosa	Clerical Technician
Sandra L. Sanchez	Purchasing Manager
Gayle L. Collins	Senior Buyer
Corrine S. Fanning	Buyer
Myrna J. Vye	Buyer
Louise L. Copeland	Inventory Specialist
Vacant	Temporary Clerical
**Hope Tina Futa	Fiscal Processing Worker

**WAREHOUSE PERSONNEL**

Gerald E. Wolf	Warehouse Manager
Joseph L. Spicka	Warehouse Supervisor
Michael H. Bartels	Supply Specialist
Carl W. Huffman	Supply Specialist
Ronald E. Brown	Truck Driver, Delivery
Jason S. Goodman	Custodian, Lead
William J. Bullock	Custodian, Senior
Scott M. Duff	Stock Worker II
John L. Peden	Stock Worker II
Jack J. Schmidt	Stock Worker II
Leslie W. Blouir	Stock Worker I
Raymond L. Fresquez	Stock Worker I
David W. Hartman	Stock Worker I
Dean A. Morris	Stock Worker I
Aaron C. Smith	Stock Worker I
*Joseph E. Grady	Stock Worker I
**David M. Nussbaum	Stock Worker I
**John G. Campbell	Stock Worker I
**Robert L. Zimonick	Stock Worker II

\*Temporary

\*\*Resigned

\*\*\*Retired



WYOMING LIQUOR COMMISSION  
CHEYENNE, WYOMING  
CASES SHIPPED BY CALENDAR AND FISCAL YEAR

CALENDAR YEAR	CASES SHIPPED	% OF GROWTH OR DECLINE
1984	637,933	(3.79)
1985	660,525	3.54
1986	631,909	(4.33)
1987	569,811	(9.75)
1988	533,608	(6.35)
1989	509,399	(4.53)
1990	522,805	2.63
1991	513,734	(1.73)
1992	525,567	2.30
1993	503,828	(4.13)
FISCAL YEAR	CASES SHIPPED	% OF GROWTH OR DECLINE
1984	637,057	(6.40)
1985	640,860	.06
1986	654,471	2.12
1987	601,105	(8.15)
1988	571,815	(4.87)
1989	514,150	(10.08)
1990	509,539	(.90)
1991	514,413	.96
1992	528,253	2.69
1993	515,711	(2.37)
1994	495,712	(3.87)

GALLONAGE REPORT - CALENDAR YEAR

WINE AND DISTILLED SPIRITS YEAR	TOTAL GALLONS	APPROXIMATE % INCREASE OR DECREASE
1984	1,793,755	(1.94)
1985	1,825,684	1.78
1986	1,714,068	(6.11)
1987	1,470,343	(14.22)
1988	1,390,557	(5.43)
1989	1,328,478	(4.46)
1990	1,366,580	2.86
1991	1,237,957	(2.09)
1992	1,367,365	10.45
1993	1,317,830	(3.62)
MALT BEVERAGE YEAR	TOTAL GALLONS	APPROXIMATE % INCREASE OR DECREASE
1984	13,507,940	(7.37)
1985	13,294,449	(1.58)
1986	12,488,913	(6.06)
1987	11,642,956	(6.77)
1988	11,316,539	(2.80)
1989	10,935,765	(3.36)
1990	11,357,809	3.86
1991	11,363,378	.04
1992	11,601,191	2.09
1993	11,422,307	(1.54)

WYOMING LIQUOR COMMISSION  
CHEYENNE, WYOMING  
July 1, 1993 - June 30, 1994

BALANCE SHEET

ASSETS

CURRENT ASSETS

Change Fund	\$	40.00	
Enterprise Fund-Purchases for resale		1,364,287.98	
Enterprise Fund-Allocation		35,463.07	
			\$ 1,399,791.05
<hr/>			
Accounts Receivable			
Liquor Sales		361,615.92	
Returned Mdse & Claims		60,780.40	
Sales Reports		678.00	
Uncollectable Stale-dated Claims		0.74	
Inventory		3,359,475.05	
			3,782,550.11
<hr/>			
TOTAL CURRENT ASSETS			5,182,341.16
<hr/>			

LIABILITIES & SURPLUS BALANCE

CURRENT LIABILITIES

Accounts Payable	\$	1,721,589.69	
Sales Tax Payable		724.39	
			\$ 1,722,314.08
<hr/>			
TOTAL CURRENT LIABILITIES			
<hr/>			
SURPLUS EARNED			
<hr/>			
Fund Balance		3,040,487.66	
Current Month Net Earnings		419,539.42	
			3,460,027.08
<hr/>			
TOTAL CURRENT LIABILITIES & SURPLUS EARNED			\$ 5,182,341.16
<hr/>			

WYOMING LIQUOR COMMISSION  
CHEYENNE, WYOMING  
PROFIT & LOSS STATEMENT  
(LIQUOR AND REVENUE)  
July 1, 1993 - June 30, 1994

	Month	% To Sales	Calendar Year To Date	% To Sales	Fiscal Year To Date	% To Sales
Case Liquor Sales	\$2,971,196.11		\$14,408,470.38		\$32,089,015.10	
Split Case Charge	14,712.10		72,745.32		161,927.90	
Excise Tax W.L.C.	79,231.27		394,788.16		873,289.35	
<b>TOTAL GROSS SALES</b>	<b>3,065,139.48</b>		<b>14,876,003.86</b>		<b>33,124,232.35</b>	
Less: Licensee Sales	931.54		5,022.53		7,816.11	
Returns & Allowances	148,681.84		671,834.90		1,464,754.31	
Less: Outgoing Frt.						
<b>TOTAL NET SALES</b>	<b>2,915,526.10</b>	<b>100.00%</b>	<b>14,199,146.43</b>	<b>100.00%</b>	<b>31,651,661.93</b>	<b>100.00%</b>
Beginning Inventory	3,763,503.19		3,657,785.38		3,602,725.44	
Liquor Purchases	1,947,100.04		10,770,307.63		24,493,091.36	
Incoming Frt Costs	73,378.26		299,682.02		633,256.91	
Handling Costs	13,204.24		36,772.34		54,045.31	
Ending Inventory	(3,359,475.05)		(3,359,475.05)		(3,359,475.05)	
<b>Cost of Goods Sold</b>	<b>2,437,710.68</b>	<b>83.61%</b>	<b>11,405,072.32</b>	<b>80.32%</b>	<b>25,423,643.97</b>	<b>80.32%</b>
<b>GROSS PROFIT</b>	<b>477,815.42</b>	<b>16.39%</b>	<b>2,794,074.11</b>	<b>19.68%</b>	<b>6,228,017.96</b>	<b>19.68%</b>
EXCISE TAX REVENUE						
Yellowstone Park	667.44		667.44		870.24	
U.P.R.R.	0.00		0.00		0.00	
Malt Beverages	21,222.92		105,516.11		227,170.18	
<b>Subtotal</b>	<b>21,890.36</b>		<b>106,183.55</b>		<b>228,040.42</b>	
<b>TOTAL GROSS PROFIT AND TAX</b>	<b>499,705.78</b>	<b>17.14%</b>	<b>2,900,257.66</b>	<b>20.43%</b>	<b>6,456,058.38</b>	<b>20.40%</b>
OTHER INCOME						
Sundry	115.00		645.50		1,395.50	
Discounts Earned	77.28		360.99		350.99	
Distiller Reports	1,100.50		8,779.00		16,430.00	
Wholesale Beer Lic.	0.00		0.00		6,750.00	
Beer Sales Reports	0.00		1,550.00		1,950.00	
Salesman Licenses	270.00		290.00		360.00	
Pallet Sales	0.00		0.00		4,900.00	
Copy Charges	0.00		16.00		24.00	
RR Dining Car Lic.	300.00		400.00		400.00	
Microbrewery Lic.	0.00		367.20		367.20	
Alcoholic Mfg. Lic.	0.00		0.00		0.00	
<b>Subtotal</b>	<b>1,852.78</b>		<b>12,508.69</b>		<b>32,937.69</b>	
<b>TOTAL GROSS EARNINGS</b>	<b>501,568.56</b>	<b>17.20%</b>	<b>2,912,766.35</b>	<b>20.51%</b>	<b>6,488,996.07</b>	<b>20.50%</b>
Less: OPERATING EXPENSE						
Collectible Damage	178.92		1,323.93		2,423.40	
Warehouse Breakage	742.58		2,522.53		5,712.35	
WLC Truck Breakage	0.00		87.46		95.82	
Inventory Adjustment	(896.47)		33.29		4,362.16	
<b>TOTAL OPERATING EXPENSE</b>	<b>25.03</b>		<b>3,967.21</b>		<b>12,593.73</b>	
Less: Office & Whse Exp.						
FY 91-92	0.00	0.00%	0.00	0.00%	0.00	0.00%
FY 93-94	82,004.11	2.81%	498,413.38	3.51%	961,439.74	3.04%
<b>TOTAL EXPENSES</b>	<b>82,029.14</b>	<b>2.81%</b>	<b>502,380.59</b>	<b>3.54%</b>	<b>974,033.47</b>	<b>3.08%</b>
<b>TOTAL NET EARNINGS</b>	<b>\$419,539.42</b>	<b>14.39%</b>	<b>\$2,410,385.76</b>	<b>16.98%</b>	<b>\$5,514,962.60</b>	<b>17.42%</b>

WYOMING LIQUOR COMMISSION  
CHEYENNE, WYOMING

DETAIL OF EARNED SURPLUS ACCOUNT  
July 1, 1993 - June 30, 1994

REMITTANCES TO STATE TREASURER FOR CREDIT TO GENERAL FUND BY FISCAL YEAR

Fiscal Year 1980	\$ 4,897,781.99
Fiscal Year 1981	4,045,607.06
Fiscal Year 1982	6,090,651.96
Fiscal Year 1983	7,093,629.82
Fiscal Year 1984	4,674,519.08
Fiscal Year 1985	4,008,270.56
Fiscal Year 1986	6,098,278.20
Fiscal Year 1987	5,049,901.16
Fiscal Year 1988	4,992,858.37
Fiscal Year 1989	4,015,184.94
Fiscal Year 1990	3,928,358.59
Fiscal Year 1991	5,213,266.79
Fiscal Year 1992	5,789,429.52
Fiscal Year 1993	5,831,824.07
Fiscal Year 1994	5,466,106.91

REMITTANCES TO STATE TREASURER FOR CREDIT TO GENERAL FUND BY CALENDAR YEAR

January - December 1980	\$ 5,274,371.20
January - December 1981	5,773,866.56
January - December 1982	5,318,400.08
January - December 1983	6,493,716.62
January - December 1984	4,524,275.02
January - December 1985	5,189,678.23
January - December 1986	5,349,096.35
January - December 1987	4,633,476.45
January - December 1988	4,606,529.89
January - December 1989	3,417,963.40
January - December 1990	4,226,311.96
January - December 1991	5,465,567.77
January - December 1992	6,014,062.83
January - December 1993	5,950,659.37
January - June 1994	2,995,309.56

The following is a list of amounts earned by the Liquor Commission accounts within the Enterprise Fund since the implementation of the funds consolidation account. The amount of money earned by these amounts is credited directly to the General Fund. The amount of earnings is a fraction of two variables, the current interest rate and the daily balance within the fund.

Fiscal Year	Interest Earned
FYS 76-80	\$ 562,819.09
FY - 81	200,968.53
FY - 82	293,226.39
FY - 83	281,830.12
FY - 84	188,502.61
FY - 85	190,230.69
FY - 86	207,618.60
FY - 87	104,980.24
FY - 88	124,898.45
FY - 89	110,666.69
FY - 90	106,195.78
FY - 91	116,188.24
FY - 92	178,666.76
FY - 93	149,726.42
FY - 94	152,710.93
	\$ 2,969,229.54

LICENSE AND PERMIT TYPES

<u>TYPE</u>	<u>NUMBER ISSUED</u>
I. Retail Liquor License .....	713
II. Restaurant License .....	179
III. Resort Liquor License .....	13
IV. County Retail Malt Beverage Permit .....	94
V. Limited Retail Liquor License .....	136
(A) Veteran's Clubs	
(B) Fraternal Clubs	
(C) Golf Clubs	
VI. Malt Beverage Wholesalers .....	27
VII. Microbrewery Permits .....	3
CURRENT NUMBER OF LICENSEES .....	1,165

The above are the various license types in the State of Wyoming as of June 30, 1994.

WYOMING LIQUOR COMMISSION  
CHEYENNE, WYOMING  
July 1, 1993 - June 30, 1994

LIQUOR LICENSEES

ALBANY COUNTY

CURRENT CITY LICENSEES

American Legion #14	Laramie
Blimpies of Laramie, Inc.	Laramie
Ann A. Breault	Laramie
Buckhorn Enterprises, Inc.	Laramie
Bud's Bar, Inc.	Laramie
Ed & Shell Burns Partnership	Laramie
Cafe Ole', Inc.	Laramie
Casper Sizzler, Inc.	Laramie
Corner Pocket of Laramie, Inc.	Laramie
Thomas J. & Nancy R. Courtney	Laramie
Coyote Land, Inc.	Laramie
Eagles F.O. #3493	Laramie
Elks B.P.O. #582	Laramie
First Street Station, Inc.	Laramie
Dick D. Foster	Laramie
Frausto Enterprises, Inc.	Laramie
Matthew D. Goodrich	Laramie
Marion M. Griffin	Laramie
Hood-Jairell Corporation	Laramie
Jacques, Inc.	Laramie
Jeffrey's Bistro, Inc.	Laramie
Judy Lauer	Laramie
Yamin Li	Laramie
MDM Corporation	Laramie
Marc VII Corporation	Laramie
Mast Enterprises of Wyoming	Laramie
Ronald & Susan Mavrich	Laramie
Mickey M, Inc.	Laramie
Moose L.O.O. #390	Laramie
Mountain West Investments, Ltd.	Laramie
The New Mandarin, Inc.	Laramie
North Ridge Discount Liquors, Inc.	Laramie
William R. O'Donnell	Laramie
Overland, Inc.	Laramie
John C. Patton, Trustee	Laramie
Quarterback Liquor, Inc.	Laramie
R & R Partnership	Laramie
Rest & Relaxation, Inc.	Laramie
Sportspage Lounge, Inc.	Laramie
T & A Enterprises, Inc.	Laramie
Tiny's Pizza & Hoagies Etc., Inc.	Laramie
Jeanette Tryon	Laramie

V.F.W. #2221  
Wagon Wheel, Inc.  
Wyoming Territorial Prison Corp.  
Peigui Yin  
J. C. & B. C. Wilkinson

FORMER CITY LICENSEES

CL Enterprises, Inc.  
Scott Allen Kindler  
Peter J. McNiff, Trustee  
Pinnacle, Inc.  
The Still Partnership

Laramie  
Laramie  
Laramie  
Laramie  
Rock River

Laramie  
Laramie  
Laramie  
Laramie  
Laramie

CURRENT COUNTY LICENSEES

Centennial Valley Trading Post  
The Old Corral  
S. Joe Wickam  
Loraine Wicklund, Executrix  
The Cavalryman, Inc.  
Colburt Inc.  
Grover & Joyce Johnson  
George D. Langston Jr.  
Laramie Country Club  
Latin American Club of Laramie, Inc.  
Wyocolo Snowmobile Club, Inc.

Centennial  
Centennial  
Fox Park  
Jelm  
Laramie  
Laramie  
Laramie  
Laramie  
Laramie  
Laramie

FORMER COUNTY LICENSEES

Stephen M. & Stacy Bonar  
Vernon R. McElwain  
Wenko, Inc.

Jelm  
Laramie  
Laramie

BIG HORN COUNTY

CURRENT CITY LICENSEES

Eagles F.O. #3086  
Elliston, Kroese, & Kroese  
Stephen & Patricia Olson  
Outpost Liquors, Inc.  
Dixon M. Lunt  
June Sell  
Carol S. Spann  
Ronald & Violet Goeman  
Ronald L. & Melanie L. Ellis  
Kenneth Adkins  
Darlinda Brauher  
Bradley C. & Lisa A. Dalin  
Elks B.P.O. #1431  
Brian J. & Danae G. Good  
Alois & Joni Hansen

Basin  
Basin  
Basin  
Basin  
Burlington  
Burlington  
Byron  
Cowley  
Frannie  
Greybull  
Greybull  
Greybull  
Greybull  
Greybull  
Greybull

M.J. Patterson's, Inc.  
Ron's Supermarket, Inc.  
Bradley Dale Wright  
BHA, Inc.  
Big Horn Foodtown, Inc.  
Jack Bischoff & Janice Hillman  
William H. Gilliam  
Medicine Wheel Bar, Inc.  
C.E. Roche  
SAG Inc.  
Michael Kenneth Sonsteng  
D. Keith & Judy McMahon  
Warren B. Patras

Greybull  
Greybull  
Greybull  
Lovell  
Lovell  
Lovell  
Lovell  
Lovell  
Lovell  
Lovell  
Manderson  
Manderson

FORMER CITY LICENSEES

Byron Bar, Inc.  
Mary Alyce Worley  
Kathleen N. Bush  
John J. & Christa M. Spillane  
Keith A. & Barbara Thompson  
Francis & Helen Williams

Byron  
Frannie  
Greybull  
Greybull  
Lovell  
Manderson

CURRENT COUNTY LICENSEES

Midway Golf Club  
David J. & Dorothy J. Larchick  
Paintrock Inn, Inc.  
Richard L. & Mary A. Yates  
TDS, Inc.  
Frank J. Murray  
Dean Cox  
Doug & Sonja Smith

Greybull  
Greybull  
Hyattville  
Hyattville  
Lovell  
Shell  
Ten Sleep  
Ten Sleep

FORMER COUNTY LICENSEES

Elbert Folkerts

Lovell

CAMPBELL COUNTY

CURRENT CITY LICENSEES

American Legion #42  
Andy's Bar & Hotel, Inc.  
Andresen, Inc.  
Bailey's Establishment, Inc.  
Kenneth F. Barkey  
Bell Knob Membership Association  
Beverage Broker, Inc.  
Daniel Butler & Georgia Morse  
Carnini's, Inc.  
Casa Del Rey of Gillette, Inc.  
Corner Pocket of Gillette, Inc.  
Country Squire Inns, Inc.

Gillette  
Gillette  
Gillette  
Gillette  
Gillette  
Gillette  
Gillette  
Gillette  
Gillette  
Gillette  
Gillette  
Gillette

22

FORMER CITY LICENSEES

*Bel Air Hospitality Services  
Theodore L. & Debra L. Forney  
Chainn Wing  
R & R Mangy Moose Saloon, Inc.  
Parco Inn, Inc.*

Rawlins  
Rawlins  
Rawlins  
Riverside  
Sinclair

### CURRENT COUNTY LICENSEES

*A Bar A Ranch, Inc.  
Flying J., Inc.  
Orville L. & Ellen M. Burgess  
Daniel Davidson  
Old Baldy Club, Inc.  
Sinclair Golf Club  
Robert & Janice Konrath*

Encampment  
Rawlins  
Saratoga  
Saratoga  
Saratoga  
Sinclair  
Walcott

FORMER COUNTY LICENSEES

Gay Johnson's Travel Center  
Patsy Payne

Rawlins  
Saratoga

**CONVERSE COUNTY**

CURRENT CITY LICENSEES

American Legion #8  
James L. Ballard  
College Inn Bar, Inc.  
Curtin's Package Liquors, Inc.  
Jimmie D. & Margorie Felton  
Marsha Henderson  
High Plains Pizza, Inc.  
The LaBonte Corporation  
Larken, Inc.  
Moose Lodge #602  
Northgate Liquors, Inc.  
Anthony L. & Rita Raba  
Ranchero Lanes, Inc.  
T-Rupe, Inc.  
D. Jack & Margaret Doll  
Willard & Gary Eckhardt  
H & K, Inc.  
Wayne F. Lopez  
Leonard E. & John C. Miller  
Scherck's Deer Creek Lounge  
Ruby L. Tappellini  
Kathleen M. Jones

Douglas  
Douglas  
Douglas  
Douglas  
Douglas  
Douglas  
Douglas  
Douglas  
Douglas  
Douglas  
Douglas  
Douglas  
Glenrock  
Glenrock  
Glenrock  
Glenrock  
Glenrock  
Glenrock  
Glenrock  
Lost Springs

### FORMER CITY LICENSEES

Wanda Joyce Heggland  
Leonard & Nelda Miller

Douglas  
Douglas

## Robert E. Shore

*Glenrock*

### CURRENT COUNTY LICENSEES

Douglas Community Club  
Jerome V. & Judy A. McNulty  
Richard D. Stinson  
Lloyd & Larry Allison  
Fort Diablo Corporation

Douglas  
Douglas  
Douglas  
Glenrock  
Glenrock

**FORMER COUNTY LICENSEES**

Leonard Miller and John Miller

*Glenrock*

**CROOK COUNTY**

CURRENT CITY LICENSEES

Roger & Christine Gillett  
Ponderosa Cafe & Bar, Inc.  
Albert & Jurline Bernard  
Jody I. Steven D. Jewett  
Robert L. Nelson  
Verlene Reynolds  
Spielman - Greer, Inc.  
V.F.W. #8473  
Delbert H. & Clio L. Carson  
Keyhole Country Club  
Terry Rood & Shirley Barr  
Aro Restaurant, Inc.  
Stephen & Catherine Hilty  
Robert & Arley Maynard  
Jerry & Alice Schloredt  
Sundance Country Club  
Joyce & Rose Mary Wagaman

Hulett  
Hulett  
Moorcroft  
Moorcroft  
Moorcroft  
Moorcroft  
Moorcroft  
Moorcroft  
Pine Haven  
Pine Haven  
Pine Haven  
Sundance  
Sundance  
Sundance  
Sundance  
Sundance  
Sundance

FORMER CITY LICENSEES

C. James Delancey  
Original Miget Mart, Inc.

Hulett  
Pine Haven

### CURRENT COUNTY LICENSEES

Richard K. & Judy A. Brengle  
Buffalo Jump Saloon, Inc.  
Forsberg, Inc.  
Richard A. Nelson  
Raymond A. & Billie N. McCoul  
Elizabeth M. Gaines

Aladdin  
Beulah  
Beulah  
Devils Tower  
Moorcroft  
Sundance

FORMER COUNTY LICENSEES

*Sand Creek Trading Post, Inc.*

Beulah

**FREMONT COUNTY**

CURRENT CITY LICENSEES

Antelope Hills Golf Club  
 Cowboy Cafe, Inc.  
 Burton J. Crow Jr.  
 Christine Garguilo  
 W. D. & Barbara J. Gordon  
 Patricia Hess  
 Mangiar Bene E Bere Meglio, Inc.  
 Rustic Pine Tavern L.L.C.  
 V.F.W. #10056  
 Sophia F. Svilar  
 Union Bar & Lounge, Inc.  
 Vinich's Club El Toro, Inc.  
 American Legion #33  
 Amica, Inc.  
 Avalon, Inc.  
 B & B, Inc.  
 The Bottle Shop L.L.C.  
 Coalter Block, Inc.  
 The Commons, A Wyoming Corp.  
 Elks B.P.O. #2317  
 Warren W. Hancock, Inc.  
 Joanie E. Hess  
 Spencer Harold Krause  
 Lander Golf & Country Club  
 Lander Shrine Club  
 Victor & Dixie Lewis  
 Mr. D's Food Centers, Inc.  
 Michael McCarty  
 Mini-Mart, Inc.  
 Allan J. & Patricia A. Robertson  
 Simplicity, Inc.  
 Dale Brown & Karen Hamlin  
 Robert & Vanessa Dickinson  
 Quinn Blair Enterprises Corp., Inc.  
 The Bull, Inc.  
 Cedar Bar, Inc.  
 Costor, Inc.  
 Depot Enterprises, Inc.  
 E & A Liquors  
 Eagles F.O. #3036  
 Elks B.P.O. #1693  
 First WY Holdings, Inc.  
 Livestock Liquors, Inc.  
 Reno M. & Evelyn Long  
 Lord Enterprises of Wyoming, Inc.  
 Martha's, Inc.  
 Morvin, Inc.  
 Pioneer Liquor Store, Inc.  
 Porky's Bar, Inc.  
 Riverton Country Club, Inc.

[illegible]

Riverton Discount Liquors, Inc.  
Safeway Stores, Inc.  
SKY, Inc.  
Smith's Food & Drug Center, Inc.  
Snowy Range Pizza, Inc.  
South Side Social Club, Inc.  
S.J. Stanbury, Inc.  
Stecks, Inc.  
Sundowner Station, Inc.  
Trade Winds Restaurant, Inc.  
V.F.W. #3628  
James R. Walker  
Dessie A. Bebout  
Nick Bebout  
Robert S. Berg  
V.F.W. #6529

Riverton  
Riverton  
Riverton  
Riverton  
Riverton  
Riverton  
Riverton  
Riverton  
Riverton  
Riverton  
Shoshoni  
Shoshoni  
Shoshoni  
Shoshoni

FORMER CITY LICENSEES

Rose Marie & Burton J. Crow Jr.  
Rustic Pine, Inc.  
D. B., Inc., A Wyoming Corp.  
Daniel & Betty Rinker  
Mike G. Trbovich  
Dale A. Brown  
First Interstate Bank of Wyoming  
Diane F. Grasmick  
S & J Enterprises, Inc.

Dubois  
Dubois  
Lander  
Lander  
Lander  
Pavillion  
Riverton  
Riverton  
Riverton

CURRENT COUNTY LICENSEES

Ronnie & Michelle Hobill  
Georgina Dewey Newman  
Sagebrush Saloon & Cafe, Inc.  
Michael W. Baer  
Brooks Lake Trading Co.  
Double Bar J Guest Ranch, Inc.  
Walter C. & Nancy Larson  
The Line Shack, Inc.  
Natures Recreations, Inc.  
Saw Mill Inn-Warm Spring Creek  
Ramona Shull  
Ronald Wilmes  
Shirley A. Miller  
Rezride, Inc.  
Donald & Bonnie Zimmerman  
Phillip C. Clarke  
Peggy J. Gustin  
V.F.W. #954  
Willow Creek Inn, Inc.  
Pilot Butte, Inc.

Atlantic City  
Atlantic City  
Atlantic City  
Dubois  
Dubois  
Dubois  
Dubois  
Dubois  
Dubois  
Dubois  
Jeffrey City  
Jeffrey City  
Kinnear  
Kinnear  
Kinnear  
Lander  
Lander  
Lander  
Lander  
Morton

FORMER COUNTY LICENSEES



Dentimore, Dentimore & McIntosh

Atlantic City

## GOSHEN COUNTY

### CURRENT CITY LICENSEES

Gerald E. & Dixie J. Oatman  
Judith A. Limon  
Corner Bar, Inc.  
Lira's Restaurant, Inc.  
Robert & Joyce Pontarolo  
American Legion #5  
Arthur & Teddy Canaday  
Clifford L. Coffelt  
Cottonwood Country Club  
Cowboy Up, Inc.  
Elks B.P.O. #1726  
Four C Partners  
Stanford R. Howe  
Robert & Betty Kroenlein  
Jim D. Miller  
Moose L.O.O. #664  
Pizza Hut of Torrington, Inc.  
Henry D. Schaneman  
Ten Pin Tropics, Inc.  
Tote Away Ent., Inc.  
Jerry L. White  
Bob L. Oaks

Ft. Laramie  
Lagrange  
Lingle  
Lingle  
Lingle  
Torrington  
Torrington  
Torrington  
Torrington  
Torrington  
Torrington  
Torrington  
Torrington  
Torrington  
Torrington  
Torrington  
Torrington  
Torrington  
Yoder

### FORMER CITY LICENSEES

Ronald G. Douglass Jr.  
John & Eileen Schuchard

Torrington  
Yoder

### CURRENT COUNTY LICENSEES

Roger & Marcia Shanor  
George & Florence Borton  
Eugene & Wyoma Hager Family Trust  
Harold & Mary Sue Jackson

Hawk Springs  
Lingle  
Torrington  
Torrington

### FORMER COUNTY LICENSES

Calvin & Virginia Lemaster  
Red Cloud Guest Ranch, Inc.

Hawk Springs  
Torrington

## HOT SPRINGS COUNTY

### CURRENT CITY LICENSEES

Richard & Donna Pattison  
Jerry Deromedi  
E. Frank Henry

East Thermopolis  
Kirby  
Kirby

Carspa, Inc.  
Francis & Irene S. Curtin  
Eagles F.O. #1884  
Elks B.P.O. #1746  
Claudia D. Guertzgen  
Melvin E. Guertzgen  
Lonnie G. Jones  
Larson City Drug & Liquor, Inc.  
Last Frontier, Inc.  
Mac's Bar, Inc.  
W. Wayne & Verla Meier  
The One-Eyed Jack Corporation  
Sideboard, Inc.  
V.F.W. #2281  
Richard P. Witt

Thermopolis  
Thermopolis  
Thermopolis  
Thermopolis  
Thermopolis  
Thermopolis  
Thermopolis  
Thermopolis  
Thermopolis  
Thermopolis  
Thermopolis  
Thermopolis  
Thermopolis

### FORMER CITY LICENSEES

Elton L. Snyder  
1st State Bank of Thermopolis  
Elsie McMichael

Kirby  
Thermopolis  
Thermopolis

### CURRENT COUNTY LICENSEES

Maxine & R. E. Goodell  
Legion Town & Country Club, Inc.

Thermopolis  
Thermopolis

### FORMER COUNTY LICENSEES

None

## JOHNSON COUNTY

### CURRENT CITY LICENSEES

American Legion Post #13  
Back West Limited Liability Co.  
Buffalo Bar & Lounge, Inc.  
Buffalo Golf Club, Inc.  
Clear Creek, Inc.  
Cross Roads Liquor Corporation  
Eagles F.O. #3030  
HTS, Inc.  
Herr Baron of Wy, Inc.  
High Plains Pizza, Inc.  
Marvin & Bambi Jones  
Vernon S. Maxwell, Inc.  
Gregory & Deborah Pickett  
Ray's Liquor, Inc.  
Scott Systems, Inc.  
WaHoo Lickers, Inc.  
Invasion Bar, Inc.  
Smith's Hole in the Wall Bar, Inc.

Buffalo  
Buffalo  
Buffalo  
Buffalo  
Buffalo  
Buffalo  
Buffalo  
Buffalo  
Buffalo  
Buffalo  
Buffalo  
Buffalo  
Buffalo  
Buffalo  
Buffalo  
Buffalo  
Buffalo  
Buffalo  
Kaycee  
Kaycee

21, Inc.

Buffalo

*K & K South Fork Inn, Inc.  
P.R.C. Two, Inc.  
Sage Brush Inn, Inc.  
Edward D. & Johanna R. Sickler  
Warren & Jacquelyn Stevenson  
Glen Raymond & Kelly Lohse*

Buffalo  
Buffalo  
Buffalo  
Buffalo  
Buffalo  
Linch

*K & K South Fork Inn, LLC  
Donald M. & Ramona M. Pickering*

Buffalo  
Buffalo

CURRENT CITY LICENSEES

Albin Bar, Inc.  
A & A Oil Co., Inc.  
Airport Golf Club, Inc.  
Albany, Inc.  
American Legion #6  
American Legion #83  
Avanti, Inc.  
Leonard E. Beierle  
The Blue Bird, Inc.  
Cheyenne Country Club  
Cheyenne Vail Investments, Inc.  
Cloud 9, Inc.  
The Corner, Inc.  
Cowboy Discount Liquors, Inc.  
Dharam Corporation  
Eagles F.O.O. #128  
Eagle's Nest, Inc.  
Elks B.P.O. #660  
F & G Corporation  
Four Winds, Inc.  
General Mills Restaurants, Inc.  
Hitching Post, Inc.  
Knights of Columbus #801  
M & M Connection, Inc.  
Mast Ent. of Wyoming, Inc.  
Mayflower Restaurant Company  
Mehn, Inc.  
William R. O'Donnell  
Oriental House, Inc.  
An Oriental Restaurant  
Package Liquors, Inc.  
Pinnacle, Inc.

[illegible]

Pizza Hut of Cheyenne WY, Inc.  
 Poor Richard's, Inc.  
 Prairie View Golf Club  
 RAM Restaurant Corp. of WY, Inc.  
 Real Mexican Foods, Ltd.  
 Redwood Liquors, Inc.  
 San Dong Garden Cheyenne, Inc.  
 Saturday's Group, Inc.  
 Scepter Investments, Inc.  
 Scooter's, Inc.  
 Skippers, Inc.  
 South Side Bar, Inc.  
 Stillwater, Inc.  
 The Sullivan Corporation  
 T. J. Pepperfield's  
 Tenways International Corp.  
 Twin Dragon, Inc.  
 Two Bar Bowl, Inc.  
 U.S. Motels Denver West, Inc.  
 Valencia Restaurant Co., Inc.  
 V.F.W. #1881  
 W W Enterprises, Inc.  
 Wigwam Liquors, Inc.  
 Wild West Apple Ventures  
 Larry L. Nussbaum  
 Pal's Pub, Inc.  
 Robert Wilhelm

*Cheyenne*  
*Cheyenne*  
*Cheyenne*  
*Cheyenne*  
*Cheyenne*  
*Cheyenne*  
*Cheyenne*  
*Cheyenne*  
*Cheyenne*  
*Cheyenne*  
*Cheyenne*  
*Cheyenne*  
*Cheyenne*  
*Cheyenne*  
*Cheyenne*  
*Cheyenne*  
*Cheyenne*  
*Cheyenne*  
*Cheyenne*  
*Cheyenne*  
*Pine Bluffs*  
*Pine Bluffs*  
*Pine Bluffs*

Leonard E. & Elizabeth T. Beierle  
El Bravito Foods, Inc.  
Julie Ann Evans  
Sea Galley Stores, Inc.  
Snowstate Restaurant Corp.  
Leroy & Linda Patterson

Cheyenne  
Cheyenne  
Cheyenne  
Cheyenne  
Cheyenne  
Pine Bluffs

*Cheyenne Catering Co., Inc.*

Cheyenne

None

Burns Farmers Coop Supply Assoc.  
American G I Forum  
Maurice W. Brown, Inc.  
Cheyenne Shrine Club  
Horn's Cowboy, Inc.  
Little Bear Inn Corporation  
Alfred & Patricia Mathieu

Burns  
Cheyenne  
Cheyenne  
Cheyenne  
Cheyenne  
Cheyenne  
Cheyenne

Cheyenne  
Cheyenne  
Cheyenne  
Cheyenne  
Cheyenne  
Cheyenne  
Cheyenne  
WAFB  
WAFB

Louise N. & Felix C. Puente  
Terry Bison Ranch, Inc.

Cheyenne  
Cheyenne

Della Skinner/Kaye Schulz  
Andrew & Sandra Thomas  
William Vogt  
Darrell Williamson  
Robert S. Willson  
Gunnar Moe  
Harvey Windfield Ritter  
Warren E. Sirwaitis  
Ladonna Rees & Terry J. Berryhill  
Fern Vandermuss  
Day's Markets, Inc.  
Rosie M. & George T. Kalan  
V.L. & A.G. Tomassi  
Western Wyoming Pizza Huts, Inc.  
Bob L. Batista  
Norma Brunski  
Eagles F.O. #2341  
H.N.A., Inc.  
J & S Companies, Inc.  
Victor T. Julian Trust  
Kemmerer Field Club, Inc.  
Brendan J. & Brenda J. Roberts  
Tom Wagner & Phillip Rosendahl  
Gloria Barry & Laura Linneman  
Michael H. & Judy L. Denison  
Keith E. Raney  
Donna L. Schaffer  
Harold D. Barber  
Gregory Kent Stewart

Afton  
Afton  
Afton  
Afton  
Afton  
Alpine  
Alpine  
Alpine  
Cokeville  
Cokeville  
Diamondville  
Diamondville  
Diamondville  
Diamondville  
Kemmerer  
Kemmerer  
Kemmerer  
Kemmerer  
Kemmerer  
Kemmerer  
Kemmerer  
Kemmerer  
LaBarge  
LaBarge  
LaBarge  
LaBarge  
Thayne  
Thayne

Ted R. & Frances A. Jorgensen  
Norma Brunski  
Victor T. Julian

Afton  
Cokeville  
Kemmerer

Silver Stream Lodge, Inc.  
Bordean & Carolyn Clinger  
Mrs. Dallas & John Clinger  
Clarence L. Reinhart  
Raymond C. Lowe  
Bon Rico, Inc.  
Lawrence L. Cook  
James W. & Lynda F. Kovach  
Jere & Sheila Kovach  
Star Valley Ranch Association

Afton  
Alpine  
Alpine  
Alpine  
Cokeville  
Kemmerer  
Kemmerer  
Kemmerer  
Kemmerer  
Thayne

None

### CURRENT CITY LICENSEES

Jeff D. & Reeda R. George  
 Adam's Rib, Inc.  
 Alibi Bar & Lounge, Inc.  
 Alrog, Inc.  
 American GI Forum  
 American Legion Post #2  
 Armor's Restaurant, Inc.  
 Dan & James Barrett  
 Bosco's, Inc.  
 C K Enterprises, Inc. a WY Corporation  
 Canteen Corporation  
 Casper Columbus Home Association  
 Casper Liquors, Inc.  
 Casper Payless Drug, Inc.  
 Casper Petroleum Club, Inc.  
 Casper Sizzler, Inc.  
 Casper Shrine Club  
 D & D Liquors, Inc.  
 DAK, Inc.  
 Eagles F.O.O. #306  
 Elks B.P.O. #1353  
 FDV Foodservice  
 Four O, Inc.  
 Four Seasons Restaurant, Inc.  
 Don H. Galles  
 Dorsey Van Galloway  
 HAC, A Limited Liability Company  
 Hospitality Development Corporation  
 Robert G. & Shirley A. Howard  
 Improved Order of Red Men  
 J. Ray's, Inc.  
 John Holiday, Inc.

[illegible]

FORMER CITY LICENSEES

Big Horn Basin Pizza Hut, Inc.  
Fred & Janice Christman  
Donald P. Jackson, Receiver  
Pizza Hut of Casper #2, Inc.  
The Shadows, Inc.  
Ullery Brothers, Inc.  
Cameo Corporation  
John J. & Loyce M. Gregg  
Pete Mendoza & Eva L. Boatman  
Dale & Arlene Sterner

Sky Blue, Inc.  
M. Kyle Sowell  
Board of Trustees Natrona Airport  
Irene D. Brooks  
Casper Boat Club  
Casper Country Club  
Circle T, Inc.  
D's Oregon Trail Bar, Inc.  
Kristopher Hool  
Mickey S. Irvine  
The Shoe, Inc.  
Tank & Tummy, Inc.  
V.F.W. #9439  
V.F.W. #10969  
Ray & Christine Davis  
Robert E. Steelman, Sr.  
Myrtle F. Brophy  
Salt Creek Country Club  
Margaret A. Minear  
Don & Eleanor Vanatta

Wilford & Mary Dorn  
NEK, Inc.  
Irene D. Shultz  
Sky King, Inc.

Dumar, Inc.  
Elks B.P.O. #1797  
Vern & Theresa Modine  
Niobrara Country Club  
Walter C. Reed  
Sam's Saloon, Inc.  
Gary R. & Mary J. Brooks

Casper  
Casper  
Casper  
Casper  
Casper  
Casper  
Evansville  
Evansville  
Evansville  
Mills

Alcova  
Alcova  
Casper  
Casper  
Casper  
Casper  
Casper  
Casper  
Casper  
Casper  
Casper  
Casper  
Casper  
Evansville  
Hiland  
Midwest  
Midwest  
Powder River  
Powder River

Casper  
Casper  
Casper  
Casper



**PLATTE COUNTY**

CURRENT CITY LICENSEES

Donald E. Mabie  
Clyde Odie & Joan Warner  
John E. Van Buskirk  
Laverne Borthwick  
Georgia Gayle  
Kelley's, Inc.  
V.F.W. #4471  
W.N.G. Officers Club  
Dolores Elmore  
Joseph D. Halterman  
Big A, Inc.  
Commodore Bar, Inc.  
Stanley Grange  
Landmark Bar Co.  
LeAnn's, Inc.  
Moose #1636  
Wheatland Country Club  
White's, Inc.  
Jimmy Wilson

Chugwater  
Glendo  
Glendo  
Guernsey  
Guernsey  
Guernsey  
Guernsey  
Camp Guernsey  
Hartville  
Hartville  
Wheatland  
Wheatland  
Wheatland  
Wheatland  
Wheatland  
Wheatland  
Wheatland  
Wheatland

FORMER CITY LICENSEES

*Rick L. Bowen*

Wheat land

CURRENT COUNTY LICENSEES

*The Diamond Guest Ranch, Inc.  
William C. White  
Top 5 Club, Inc.  
Harris Park, Inc.  
Ron Naibauer & Cathie Bennett*

Chugwater  
Glendo  
Camp Guernsey  
Wheatland  
Wheatland

FORMER COUNTY LICENSEES

None

**SHERIDAN COUNTY**

CURRENT CITY LICENSEES

Ranger Bar & Cafe L.L.C.  
Eloc Enterprises, Inc.  
Rockpro Realty Corporation  
Antelope Butte Corporation  
Shur Shot, Inc.  
Silver Spur Bar, Inc.  
American Legion #7  
Andkay Enterprises, Inc.  
Edward & Catherine Brantz

Clearmont  
Dayton  
Dayton  
Ranchester  
Ranchester  
Ranchester  
Sheridan  
Sheridan  
Sheridan

Co-Wy, Inc.  
Cattleman's Cut, Inc.  
Cloud Peak Lanes, Inc.  
Double Buck, Inc.  
Eagles F.O. #186  
Elks B.P.O. #520  
Gourmet Galley, Inc.  
Richard K. Howell  
Kon Ho In  
Kalif Temple A.A.O.N.M.S.  
Kendrick Municipal Golf Commission  
Young Ki Kim  
Kevin Kobielsuz & Tim Duran  
Elaine Main  
Vincent Mediate  
Moose L.O.O. #674  
Motor Inn Lounge, Inc.  
Moyle Petroleum Co.  
James E. & Marsha A. Neeriemer  
Northwestern Develop Co., Inc.  
Ole's Pizza, Inc.  
Pizza Hut of Sheridan, Inc.  
Pony Lounge & Frontier Liquor, Inc.  
Rainbow Bar, Inc.  
Sheridan Heritage Center, Inc.  
Sheridan Land Company, Inc.  
Sheridan Palace, Inc.  
David Sui & Donna Ng Sui  
Scott E. Sutton  
Gerald & Karen Townsend  
Trails End Motel, Inc.  
V.F.W. #1560  
Wyo Theater, Inc.

[illegible]

FORMER CITY LICENSEES

Beverly Ann Straight  
DD's Bar & Lounge, Inc.  
Gene & Fran Herriges  
Blaze Oil Co.  
Brown Drug Co.  
Larry G. & Geraldine T. Hoover  
Carl & Liana Ng  
Sheridan Food Co., Inc.  
Steve Zorn

Clearmont  
Ranchester  
Ranchester  
Sheridan  
Sheridan  
Sheridan  
Sheridan  
Sheridan  
Sheridan

### CURRENT RESORT LICENSEES

*Sheridan Catering Co., Inc.*

*Sheridan*

FORMER RESORT LICENSEES

None

CURRENT COUNTY LICENSEES

Jon Sherry  
David H. Weant  
Ucross Guest Ranch, Inc.  
B-Y Ranch Association, Inc.  
Big Horn Mountain Lodge, Inc.  
O M & S, Inc.  
Martha Craven  
Crystal Springs, Inc.  
Big Horn Equestrian Center, Inc.  
Eagles FOE #4169  
Golden Steer, Inc.  
Patrick L. Green  
John J. & Phyllis J. Madia  
Sheridan Country Club  
Lodore Supper Club, Inc.  
A. B. Peterson & F. C. Miner  
Wagon Box Supper Club, Inc.  
Ewe Turn, Inc.  
Jacqueline L. Quarterman

### FORMER COUNTY LICENSEES

*Last Chance Bar, Inc.*  
*Dale & Linda Rehder*  
*Judy A. Volmer*  
*Willie K. & Delores L. Whitford*

**SUBLETTE COUNTY**

### CURRENT CITY LICENSEES

Carol Copeland  
John Copeland  
Frank Fear  
Kim Tanner  
C. W. & Sharon Davis  
D & W, Inc.  
Geo Enterprises, Inc.  
Billy & Annette Pape  
S T N, Inc.  
Stockman's, Inc.  
V.F.W. #4801  
James & Mary Washam

FORMER CITY LICENSEES

*Judith A. Marx*

CURRENT COUNTY LICENSEES

Richard K. Thomas  
Gordon E. & Donna M. Steele

*Big Horn  
Big Horn  
Clearmont  
Dayton  
Dayton  
Dayton  
Leiter  
Parkman  
Sheridan  
Sheridan  
Sheridan  
Sheridan  
Sheridan  
Story  
Story  
Story  
Ucross  
Wyarno*

Big Horn  
Dayton  
Leiter  
Wyarno

Big Piney  
Big Piney  
Marbelton  
Marbelton  
Pinedale  
Pinedale  
Pinedale  
Pinedale  
Pinedale  
Pinedale  
PInedale

*Big Piney*

Bondurant  
Boulder

Reints L.L.C.  
H. Greg & Kathy Jean Rouse  
Country Lane Lmt'd Liability  
Frank Deede  
Greg Peterson  
Pinedale Golf Club, Inc.  
Nancy L. Stott

FORMER COUNTY LICENSEES

*Green River Guest Ranch, Ltd.  
Richard & Nancy Stott*

**SWEETWATER COUNTY**

CURRENT CITY LICENSEES

Frank F. Atwill  
 Buckin Corporation  
 Helen Y. Hafey  
 Clarice Tyler & Edward Tyler  
 Clearview Lanes, Inc.  
 Cynor Co., Inc.  
 Edward N. & Paula R. Doody  
 Eagles F.O. #2350  
 Robert A. & Patricia A. Easton  
 Embassy Bar, Inc.  
 The Finer Edge, Inc.  
 Dolan D. & Lonnie M. Floyd  
 Bruce E. & Karen A. Hill  
 Lawrence H. Hill  
 Iron Horse, Inc.  
 Harry & Elaine Karician  
 Dep T. & Mark G. Leo  
 Trudel & Armando Lopez  
 Mansface Liquors, Inc.  
 Rancho Bowling Lanes, Inc.  
 Red Feather, Inc.  
 Rita's Fine Mexican Food, Inc.  
 Western Wyoming Pizza Huts, Inc.  
 Wild Horse, Inc.  
 Don F. Winter  
 Albertson's, Inc.  
 Betty Albrecht  
 American Legion #24  
 Patricia Eleanor Anselmi  
 Astro Lounge, Inc.  
 Black Rock, Inc.  
 City Market, Inc.  
 Jake & Sally Cordova  
 Demas-Jackman, Inc.  
 Lawrence F. Dernovich  
 Eagles F.O.O. #151  
 Elks B.P.O. #624

Cora  
Daniel  
Pinedale  
Pinedale  
Pinedale  
Pinedale  
Pinedale

Cora  
Pinedale

[illegible]



Gateway, Inc.  
HA, Inc.  
Don & Marion Haddock  
JKS, Inc. A Wyoming Corporation  
Lynn Jackman  
Kayar Distributing, Inc.  
Howard & Kay Kelly  
LEWS, Inc. a Wyoming Corporation  
Lynpaj, Inc., A Wyoming Corporation  
Barbara Mitchelson  
Outlaw Inn, Inc.  
P H R S Inc., A Wyoming Corporation  
Prism Enterprises L.L.C.  
Silver Dollar Motel, Inc.  
Smith's Beverage of Wyo., Inc.  
10 to 10 Liquors, Inc.  
V.F.W. #2316  
Richard P. & Susan E. Welsh  
White Mtn. Golf Assn., Inc.  
Wyo. Shakey's Pizza #4, Inc.  
Dorothy M. Overy  
Joseph Myron Wolf  
Edwin R. Murray  
Julieta Patton  
Weldon Don & Rosemary Rowe

FORMER CITY LICENSEES

Mike, Jr. & Janet Cardenas  
Arthur M. Hafey  
Act I, Inc.  
Slovenski Dom, Inc.  
Elizabeth M. Murray

### CURRENT RESORT LICENSEES

Margus Resorts International, Inc

FORMER RESORT LICENSEES

America West Corp.

CURRENT COUNTY LICENSEES

Eden Saloon, Inc.  
Dwayne & Meceale A. Mitchelson  
Sandy Crossings Ent., Inc.  
Sinclair Oil Corporation  
Buckboard Marina, Inc.  
Hast, Inc.  
Rolling Green Country Club, Inc.  
Varley Mercantile  
Dorothe Brinegar  
Kenneth J. Henley

Rock Springs  
Rock Springs  
Rock Springs  
Rock Springs  
Rock Springs  
Rock Springs  
Rock Springs  
Rock Springs  
Rock Springs  
Rock Springs  
Rock Springs  
Rock Springs  
Rock Springs  
Rock Springs  
Rock Springs  
Rock Springs  
Rock Springs  
Rock Springs  
Rock Springs  
Superior  
Superior  
Wamsutter  
Wamsutter  
Wamsutter

Bairoil  
Granger  
Rock Springs  
Rock Springs  
Wamsutter

## Rock Springs

## Rock Springs

Eden  
Farson  
Farson  
Little America  
Green River  
Green River  
Green River  
Point of Rocks  
Rock Springs  
Rock Springs

Darrell & Carole Kruljac  
Ron E. & Cathy L. Ronick  
White Mountain Mine Co., Inc.

FORMER COUNTY LICENSEES

None

**TETON COUNTY**

CURRENT CITY LICENSEES

The All American Flavor Co.  
Anthony's Restaurant, Inc.  
The Blue Lion, Inc.  
Broadway Plaza Corporation  
The Cowboy Group, Inc.  
Joseph & Sylvia DiPrisco  
John DiTommaso  
Elks B.P.O. #1713  
Gun Barrel, Inc.  
J & D Wy West Enterprises, Inc.  
Jedediah Corp.  
Kathillu Corporation  
League Bowlers of Jackson  
M & H Spirits, Inc.  
Made In Jackson Hole, Inc.  
The Merry Piglets Mexican  
Mountain High Pizza Ltd.  
Off Broadway, Inc.  
Alton & Carol Parker  
Pizza Hut of Jackson, Inc.  
ROM Corporation  
Rancher Corporation  
Silver Dollar, Inc.  
Snake River Corporation  
Snarfit, Inc.  
Snow King Resort Center, Inc.  
Sugarfoot, Inc.  
Sweetwater Restaurant, Inc.  
TMB Corporation  
Khuong H. Tang  
Tortilla Flats, Inc.  
Terry Travis & Stella Streppa  
Virginian Investment Co., Inc.  
Wagon Wheel Village Liquors, Inc.  
Chris T. Wight

FORMER CITY LICENSEES

AP Enterprises, Inc.  
Bistro 170 Corporation  
John M. & Carol H. Gonnella

Rock Springs  
Rock Springs  
Rock Springs

[illegible]

CURRENT RESORT LICENSEES

Grand Targhee  
Elk Country Motels, Inc.  
Snow King Resort, Inc.  
Colter Bay Corporation  
Forever Living Products, Inc.  
Alpenhof Lodge, Inc.  
Johnson Resort Properties  
Sojourner Lodge Management, Inc.

Alta  
Jackson  
Jackson  
Moran  
Moran  
Teton Village  
Teton Village  
Teton Village

FORMER RESORT LICENSEES

## All Suite Development

*Jackson*

CURRENT COUNTY LICENSEES

Cicero's, Inc.  
Charles A. & Shigeko Irwin  
Teton West, Inc.  
Larry H. Williamson  
Acadian House Restaurant  
Blackfoot Corporation  
Computer Seating Systems, Inc.  
Sam Coutts Enterprises  
Vicky Goulouff  
Horse Creek Properties  
Jackson Hole Airport Board  
Kilmer & Co., Inc.  
Teton Pines Country Club  
Lost Creek Ranch, Inc.  
Moose Enterprises, Inc.  
Jackson Hole Golf & Tennis Club  
Jackson Lake Lodge Corporation  
Jenny Lake Lodge, Inc.  
John King  
Lewis & Clark Lodge, Inc.  
Togwotee Mountain Lodge, Inc.  
John E. Becker  
Catering By Claudia, Inc.  
M M Investments  
Stiegler's, Inc.  
Vista Grande, Inc.  
Bar J Chuckwagon, Inc.  
Nora's Fish Creek Inn, Inc.  
Stagecoach Properties, Inc.

Alta  
Alta  
Alta  
Alta  
Jackson  
Jackson  
Jackson  
Jackson  
Jackson  
Jackson  
Jackson  
Moose  
Moose  
Moran  
Moran  
Moran  
Moran  
Moran  
Teton Village  
Teton Village  
Teton Village  
Teton Village  
Teton Village  
Wilson  
Wilson

**FORMER COUNTY LICENSEES**

Steven J. Jackson  
National Park Adventures, Inc.  
Cynthia Marie Artist

Alta  
Jackson  
Moran

**UINTA COUNTY**

CURRENT CITY LICENSEES

Miles J. Alexander  
Bonnie J. Alexander  
Bad Co., Inc.  
Bonnie Bell  
Harold A. Byrne  
Diamond W. Ranch Co., Inc.  
Eagles F.O. #2359  
Janique Eckman  
Evanston Golf Club  
Luis Ibarra  
J & K Edwards, Inc.  
Scott Allen Kindler  
William & Leila LaCoe  
Last Outpost, Inc.  
Mack W. Lott  
James B. Merzon, Inc.  
James A. Miller  
Jack W. Mills  
Kilburn Porter  
SCB, Inc.  
Spirits of Red Mountain, Inc.  
V.F.W. #4280  
Herbert R. Weston  
Western Wyoming Pizza Huts, Inc.  
Whirl Inn, Inc.  
Yellow Creek Liquor, Inc.  
Veda Mae Damberger  
Lois Rodabaugh  
Bridger Valley Lanes, Inc.  
Earl H. & Nellie F. Byrne  
Eldon L. & Bettie J. Tripp  
Western Wyoming Pizza Huts, Inc.

Evanston  
Evanston  
Evanston  
Evanston  
Evanston  
Evanston  
Evanston  
Evanston  
Evanston  
Evanston  
Evanston  
Evanston  
Evanston  
Evanston  
Evanston  
Evanston  
Evanston  
Evanston  
Evanston  
Evanston  
Lyman  
Lyman  
Mountain View  
Mountain View  
Mountain View  
Mountain View

FORMER CITY LICENSEES

Bud & Lyda Huseman  
Harvey & Inger Lundershausen  
Uinta Investment Corporation

Evanston  
Evanston  
Evanston

### CURRENT RESORT LICENSEES

Roscoe Weston Lamplighter Motel, Inc.

Evanston

FORMER RESORT LICENSEES

None

CURRENT COUNTY LICENSEES

Elks B.P.O. #2588  
FFCR Corporation  
Fireside, Inc.

Evanston  
Evanston  
Evanston

Stanton W. Taggart  
Wyoming Horse Racing, Inc.  
American Legion #36  
F & M Bridger Corporation  
A.L., M.L., P.L. & P. Massa  
Wagon Wheel Restaurant  
R & L Sportsman, Inc.

FORMER COUNTY LICENSEES

Americo & Mary Lou Massa  
Arnold W. Vandenberg  
Robert & Lazell Moore

WASHAKIE COUNTY

CURRENT CITY LICENSEES

Robert C. Boltz  
E. H. "Bud" Knight  
Acktin Investments, Inc.  
American Legion #44  
Bruce Briggs/Lucille Williams  
Harry Douzenis  
E Z, Inc.  
Eagles F.O. #3096  
Elks B.P.O. #1908  
Jon's Food Basket  
Office Lounge, Inc.  
Roy & Linda Phillips  
Pizza Hut of Worland, Inc.  
Sonny's Investments, Inc.  
Chris G. Vilos, Jr.  
Worland Country Club  
Worland Motel, Inc.

FORMER CITY LICENSEES

RJ's Saloon, Inc.

CURRENT COUNTY LICENSEES

Kyle A. Dunham  
Tony Poulos & Diane Roden

FORMER COUNTY LICENSEES

None

WESTON COUNTY

CURRENT CITY LICENSEES

Evanston  
Evanston  
Fort Bridger  
Fort Bridger  
Fort Bridger  
Fort Bridger  
Urie

Fort Bridger  
Fort Bridger  
Urie

Ten Sleep  
Ten Sleep  
Worland  
Worland  
Worland  
Worland  
Worland  
Worland  
Worland  
Worland  
Worland  
Worland  
Worland  
Worland  
Worland  
Worland  
Worland

Worland

Worland  
Worland

D & S Liquors, Inc.  
Dennis D. Dixon  
High Plains Pizza, Inc.  
Carolyn Jean Howell  
Hy Lee Enterprises  
Nancy C. Liles  
Thomas F. & Judy E. Mitich  
Newcastle Country Club  
Frances Rossman  
Robert Thaler  
Lillis D. Martens  
James & Elizabeth Todd  
Raymond P. Twedt  
David L. Watkins

FORMER CITY LICENSEES

Dolores Donner  
John W. & Eilleen Ehrman

CURRENT COUNTY LICENSEES

Cambria Inn, Inc.  
Joseph J. Gualtieri  
Ronald A. & Ruby Huckins  
Christy K. Smith  
V.F.W. #2516  
Weston Land, Inc.  
Gordon Loeb  
Cedar Pines Country Club

FORMER COUNTY LICENSEES

None

Newcastle  
Newcastle  
Newcastle  
Newcastle  
Newcastle  
Newcastle  
Newcastle  
Newcastle  
Newcastle  
Upton  
Upton  
Upton  
Upton

Upton  
Upton

Newcastle  
Newcastle  
Newcastle  
Newcastle  
Newcastle  
Osage  
Upton

WYOMING LIQUOR COMMISSION  
CHEYENNE, WYOMING  
July 1, 1993 - June 30, 1994

COUNTY MALT BEVERAGE PERMITS

ALBANY COUNTY

CURRENT LICENSEES

The Friendly Store & Motel, Inc.  
Key Associates Recreation, Inc.  
Murray J. Self  
Marvin M. Brandt  
Edward E. Bergstrom  
William M. & Sharon K. Malody  
Donna Fischer  
Glow Serrano

Centennial  
Centennial  
Centennial  
Fox Park  
Laramie  
Laramie  
Laramie  
Tie Siding

FORMER LICENSEES

Pole Mountain, Inc.  
Gerald Dunnegan

Buford  
Laramie

SPECIAL MALT BEVERAGE PERMIT

University of Wyoming Trustees

Laramie

BIG HORN COUNTY

CURRENT LICENSEES

Antelope Butte Corporation  
Jack Dykstra  
Martin R. Mayland  
Lisabeth Michelena  
Donald & Beatrice Mowell

Dayton  
Lovell  
Shell  
Shell  
Shell

FORMER LICENSEES

James P. Bath

Lovell

CAMPBELL COUNTY

FORMER LICENSEES

Merle J. Zachary

Arvada

CARBON COUNTY

CURRENT LICENSEES

Sand Lake Lodge, Inc.  
Michael Allen Konrath  
Milliken Enterprises, Inc.  
Kelly Oil Company  
Teresa Norton  
Seminole Boat Club, Inc.  
Leslie D. & Vicky L. Konrath

Brush Creek District  
Elk Mountain  
McFadden  
Rawlins  
Rawlins  
Seminole Reservoir  
Walcott

FORMER LICENSEES

Lamont, Inc.  
Frank E. & Roberta M. Erickson  
Edward Faust

Lamont  
Rawlins  
Saratoga

CONVERSE COUNTY

Wayne A. & Billie J. Hirsch  
Shirley Phillips  
Donald S. & Shirley Martin

Bill  
Douglas  
Shawnee

CROOK COUNTY

CURRENT LICENSEES

James H. Brown  
Campstool Enterprises  
Marcelleen, Inc.

Carlile  
Devil's Tower  
Devil's Tower

FREMONT COUNTY

CURRENT LICENSEES

K-Bar Ranch, Inc.  
Mavis J. Braddock & William R. Ramage  
Paul Brownfield  
Beverly A. Chamberlain  
Double M, Inc.

Lander  
Lysite  
Riverton  
Riverton  
Shoshoni

FORMER LICENSEES

Bryce E Westlake

Riverton

GOSHEN COUNTY

CURRENT LICENSEES

Tommy A. & Cecylia R. Barbich

LaGrange

HOT SPRINGS COUNTY

CURRENT LICENSEES

Roland Luehne

Thermopolis

JOHNSON COUNTY

CURRENT LICENSEES

Bambi Schumacher

Buffalo

LARAMIE COUNTY

CURRENT LICENSEES

Burns Bros., Inc.

Cheyenne

LINCOLN COUNTY

CURRENT LICENSEES

Douglas N. Barber  
Familee Thriftway, Inc.  
Dorothy I. Reinhart

Alpine  
Alpine  
Alpine

NATRONA COUNTY

CURRENT LICENSEES

Clark's Corner, Inc.  
Duane E. Young  
Floyd & Shirley Widmer

Casper  
Casper  
Waltman

FORMER LICENSEES

Dennis R. Stotts

Casper

SPECIAL MALT BEVERAGE PERMIT

Volume Services, Inc.

Casper

NIOBRARA COUNTY

None

PARK COUNTY

CURRENT LICENSEES

Louid M. & Laurie Ann Ash  
Garnett Cary  
Chester F. Lenik, Jr.

Cody  
Cody  
Wapiti

PLATTE COUNTY

CURRENT LICENSEES

Michael E. Johnston

Wheatland

SHERIDAN COUNTY

CURRENT LICENSEES

David H. Galles  
Kimberly Jane Phillips  
Big Horn Mercantile Company  
Clifford B. Archer  
Richard A. Hoover  
CR Energy Corporation

Arvada  
Banner  
Big Horn  
Story  
Story  
Sheridan

FORMER LICENSEES

Dale J. Yetter

Arvada

SUBLETTE COUNTY

CURRENT LICENSEES

Gordon C. & Monta H. Benson  
Kenneth & Dorothy L. Meyers  
Elk Ridge Lodge, Inc.  
Boulder Lake Lodge, Inc.  
Andrew M. O'Neal

Bondurant  
Bondurant  
Cora  
Pinedale  
Pinedale

SWEETWATER COUNTY

CURRENT LICENSEES

Christian W. Keldsen  
June Harrison

Baggs Route  
Eden

Curtis C. Martin  
Little America Corporation  
Roger D. Varley  
JC Kilburn Co.  
Marvin & Charlotte Killian

FORMER LICENSEES

Dill's, Inc.  
Albert Wilde

TETON COUNTY

CURRENT LICENSEES

BV Corp.  
Carol Mann Bergmeyer  
Mortiz O. Bergmeyer  
Mark Hipkins  
Balsam Root General Store Inc.  
Thomas M. Bess  
Eugene Wayne Bonjorni  
Patricia Green  
Lone Eagle Expeditions, Inc.  
Earl & Sandy Lutz  
William T. & Rohnda Sands  
Snake River Park, Inc.  
Dale & Shirley Atkinson  
Gary Givens  
International Leisure Host Ltd.  
Robert L. Walton  
Harry Washut, Jr.  
Robert O'Neil  
Mary Guile  
Gregory Smith  
Troy E. Snow  
Richard Eidem  
Mountain Hospitality Inc.  
RSP Inc.  
Hungry Jack's General Store  
Arthur Edward Shierry  
TBFC Ltd.

FORMER LICENSEES

Byron Phillips  
Gene P. Borre  
Guear Corp.  
Bunex Inc.  
Jackson Hole Resort Services, Inc.  
Paul McCollister

Farson  
Little America  
Point of Rocks  
Rock Springs  
Wamsutter

Eden  
McKinnon

Alta  
Alta  
Alta  
Alta  
Jackson  
Jackson  
Jackson  
Jackson  
Jackson  
Jackson  
Jackson  
Moran  
Moran  
Moran  
Moran  
Moran  
Teton Nat Park  
Teton Nat Park  
Teton Nat Park  
Teton Nat Park  
Teton Village  
Teton Village  
Teton Village  
Wilson  
Wilson  
Wilson

Alta  
Jackson  
Jackson  
Teton Village  
Teton Village  
Teton Village

Mountain Beverages, Inc.  
Teton Village Mountain Meals, Inc.  
Patty-Cake Patisserie

Teton Village  
Teton Village  
Wilson

UINTA COUNTY

CURRENT LICENSEES

Ottley Enterprises  
Burns Brothers, Inc.

Evanston  
Fort Bridger

FORMER LICENSEES

Janique Eckman

Evanston

WASHAKIE COUNTY

None

WESTON COUNTY

CURRENT LICENSEES

Four Corners Enterprises

Four Corners

**WYOMING LIQUOR COMMISSION  
CHEYENNE, WYOMING  
July 1, 1993 - June 30, 1994**

**MALT BEVERAGE WHOLESALERS**

**CURRENT LICENSEES**

Browning, Inc.  
CPO, Inc.  
Comet Distributing, Inc.  
Stoval Beverage Company  
Western Distributing Company  
Cheyenne Beverage Inc.  
Foursome, Inc.  
Big Horn Wholesale  
Kenney, Inc.  
B & F Distributing  
Dunlap Distributing  
Jaycox Enterprises, Inc.  
G & G Enterprises, Inc.  
Longpre Distributing  
Desert Beverage, Inc.  
Moy A. & Shirley A. Wing  
Fremont Distributing  
Peterson Distributing  
Bertolina Wholesale Co., Inc.  
Western Wyoming Beverages, Inc.  
Big Horn Beverage Co., Inc.  
Metz Beverage Co., Inc.  
Belco, Inc.  
High Country Distributing, Inc.  
Ted & Barbara Sterkel  
Tri-County Coors, Inc.  
Otto Brothers Brewing Co., Inc.  
Coors Intermountain  
Teton Distributing, Inc.

Casper  
Casper  
Casper  
Casper  
Casper  
Cheyenne  
Cheyenne  
Cody  
Cody  
Jackson  
Jackson  
Jackson  
Laramie  
Laramie  
Rawlins  
Rawlins  
Riverton  
Riverton  
Rock Springs  
Rock Springs  
Sheridan  
Sheridan  
Thermopolis  
Torrington  
Torrington  
Torrington  
Wilson  
Worland  
Worland

**FORMER LICENSEES**

None

**MICROBREWERY PERMITS**

**CURRENT LICENSEES**

Perry R & Shelie D. Elliott  
Rocky Mountain Brewing Co., Inc.  
Snake River Brewing Co., Inc.  
TDS, Inc.  
Otto Brothers Brewing Co., Inc. (Formerly Manufacturer)

Casper  
Cheyenne  
Jackson  
Lovell  
Wilson

**WYOMING LIQUOR COMMISSION**

**CHEYENNE, WYOMING**

**LIQUOR PURCHASES JULY 1993 THRU JUNE 1994**

NAME	AMOUNT
Adamba Imports	185.00
Airlie Winery	118.18
Alderbrook	1892.00
Alexander Valley Vineyards	8104.73
Amador Foothill Winery	456.00
American Beverage	455.00
American Wine Dist	327.00
American Wine Merchants	370.00
Amity Vineyards	1646.95
Anderson, Stanley	113.00
Areti Wines Ltd	53306.07
Ariel	2610.00
Arrowood Vineyards	16087.67
Austin Nichols	6904.12
Australian Benchmark Vintners	9003.30
Australian Wines	531.00
Avatar Wine Partners	350.00
B R Cohn	1156.07
Babcock Vineyards	1262.00
Bacardi Imports Inc	1447510.21
Bacchus Importers	66.00
Bandiera Winery	346.50
Banfi USA	249228.51
Bargetto Winery	783.00
Barton Brands LTD	325588.43
Baruh Spirits	33648.93
Beacon Wines	3058.28
Beam Brands	4288510.20
Belvedere Winery	332.64
Benziger Family Winery	512.00
Bercut Vandervoort	45.50
Bergfeld Winery	442.00
Bernardus	114.00
Billington Dist	166.00
Blair Imports	8802.05
Bogle Vineyards	11198.29
Bonanno, Francis A Inc	734.00
Bonny Doon Vineyards	2108.81
Bouchaine Vineyards	2020.00
Brandborg Cellars	4742.25
Brown Forman Corp	1705338.82
Buehler Vineyards	392.00
Buena Vista Winery	12037.50
Burgess Cellars	9468.00



Burgundy Wine	13958.50
CABO Dist	306.00
Cabernet Corp	72.00
Cain Cellars	2649.52
Calera Wine Co	3777.88
Campari USA	3087.00
Canandaigua Wine CO	169970.33
Carillon Importers Ltd	354057.43
Carmel Food USA	32.80
Carneros Creek Winery	41484.19
Carriage House	1052.40
Caymus Vineyards	33222.31
Chalk Hill Winery	7972.44
Chalone Inc	11733.82
Charles Jacquin	13528.22
Chateau De Baun	1060.00
Chateau Montelena	11584.00
Chateau Potelle Winery	372.00
Chateau St Jean Winery	11059.00
Chimney Rock	1236.00
Cinnabar Vineyards	6816.00
Classic Marketing Co	141.64
Classic Wines of California	208.00
Classical Wines of Spain	220.50
Clear Creek Distillery	434.40
Clicquot Inc	17051.99
Cline Cellars	9678.43
Coastal Wine Merchants	706.05
Collins & Co	563.78
Columbia Winery	18255.62
Conexport USA	108.00
Consolidated Distilled Prod In	39898.41
Cooper Mtn Vineyards	254.00
Coturri & Sons	444.00
Covey Run	327.00
Creston Manor Vineyards	171.00
Cuvaision Inc	16738.00
Delicato	184.50
DeLoach Vineyards	22474.93
Diamond Creek Vineyards	2025.00
Diamond Wine Merchants	1379.06
Distillerie Stock USA	435.70
Domaine St George	19001.88
Domecq Importers	47928.46
Dreyfus Ashby Inc	203.00
Dry Creek Vineyards	25707.71
Duckhorn Vineyards	6362.60
Duggans Distillers	3486.14
Dunn Vineyards	5808.00
Duxoup Wine Works	1541.00
Eagle Ridge	192.00
Elk Cove	4872.00

Emilio Guglielmo	219.00
Empson USA	945.50
Euro American	180.00
Evaton	197.50
Far Niente Winery	4844.00
Ferrari Carano	51658.73
Fess Parker	335.00
Fetzer Vineyards	170190.00
Fieldbrook Valley	72.00
Firestone Vineyards	27218.91
Flora Springs	2512.00
Folie A Deux	204.00
Franciscan Oakville Vineyards	8165.00
Franklin Distillers	862743.19
Franklin Selections	900.00
Freixenet	26473.21
Frey Vineyards	439.20
Friend Wine	332.00
Frogs Leap Winery	10209.40
Gaetano Specialties	34562.05
Gallo E & J	1092037.50
Gary Farrell Wine	505.60
Geyser Peak Winery	12073.47
Gibson Wine Co	818.53
Girard Winery	4532.00
Glen Ellen Winery	44748.29
Golden State Vintners	2076.00
Goosecross Cellars	810.00
Grant & Sons William	86144.88
Grape Expectations Inc	875.59
Great Estates	1232.00
Greek American Wines	723.95
Green & Red Vineyards	1373.00
Grgich Hills Cellars	32168.04
Groth Vineyards & Winery	17455.54
Guenoc Winery	1356.00
Guilliams	377.60
Gundlach Bundschu	30339.86
H & S Ent	392.50
Hagafen Cellars	209.00
Halby Mkt	16840.54
Hallcrest Vineyards	680.00
Hanna Winery Inc	698.00
Harrison Vineyards	808.00
Hartwell Vineyards	425.00
Havens Wine Cellars	732.00
Heaven Hill Distilleries	183726.48
Hedges Cellars	108.00
Heitz Wine Cellars	2990.72
Henry Winery	25492.60
Hess Collection	3155.00
Heublein Wines Inc	3330771.25

Hidden Cellars	1414.00
Hinman Vineyards	170.85
Hogue Cellars	8711.54
Honeywood Winery	245.65
Honig Cellars	180.00
Hood River Distillers Inc	19337.49
Hop Kiln Winery	118.40
Hunt Country	250.00
JFC International Inc	4740.60
Jack Poust	176.00
Jean Claude Boissett	816.00
Jepson Vineyards	322.00
Jordan Sparkling Wine	10386.00
Jordan Vineyards	57530.00
Joullian Vineyards	474.00
Karly Wines	447.00
Keenan RH	600.00
Kent Rasmussen Winery	917.42
Kenwood Vineyards	10206.28
Kermit Lynch	8120.00
Klein Foods	177.00
Knudsen Erath	1278.91
Kobrand Corp	28172.44
Konocti Winery	5583.63
Konrad Estate	120.00
Kunde Estate	12590.13
La Jota Vineyards	2825.00
Laird & Co	2831.56
Landmark Vineyards	5099.00
Latah Creek	225.00
Laureate Imports	138.60
Laurel Glen	14868.00
Leeward Winery	80.00
Leonard Kreusch	17678.28
Le Vecke Corporation	499.05
Liparita Cellars	343.00
Livingston Wines	360.00
Lockwood Vineyards	192.00
J Lohr Winery	6850.80
Louis Martini	2833.08
McCormick Distilling	63.00
McDowell Valley Cellars	660.02
MacRostie Winery	1150.00
Maisons Marques & Domaines	7929.00
Majestic Marketing	134457.39
Marietta Cellars	9581.00
Marine Trading Consultants Inc	135.90
Martines Wine	3316.30
Mastantuano Winery	103.50
Matanzas Creek	1346.00
Mayacamus Vineyards	896.00
Mazzocco Winery	277.20

Meiers Wine Cellars	8709.89
Merryvale Vineyards	1146.00
Miramar Trading	193.50
Mirassou	8356.48
Mohawk Distilled	76451.49
Monsieur Henri Wines Ltd	94203.23
Monticello Cellars	8017.67
Murphy Goode	9537.00
Nalle Winery	1088.00
National Distributing	369.40
Negociants USA Inc	279.00
Nestor Imports	1147.50
Newton Vineyards	132.00
Niebaum Coppola	700.00
Nolet Springs	331.50
Oakridge	690.00
Optima	2250.00
PWG Vintners (Lindemans USA)	42235.50
Paddington Corp	638148.16
Palm Bay	621.00
Panther Creek	784.00
Paramount Distillers Inc	33042.27
Parducci Wines	18543.64
Parrott & Co	29599.78
Pasternak	802.00
Paterno Imports Ltd	42089.15
Patz & Hall Wine Co	304.00
Peachy Canyon	880.00
Pedroncelli Winery	1699.34
Pellegrini Brothers	144.00
Phelps Joseph Vineyards	2865.00
Phillips & Sons (ED)	62191.90
Phillips (RH)	1074.00
Pine Ridge Winery	14301.47
Premium Port	8542.00
Prestige Wine Imports	374.00
Preston Family Inc	41.18
Preston Vineyards & Winery	54.00
R Torre	64.75
Rabbit Ridge	240.00
Ravenswood	5459.00
Raymond Vineyards	430.00
Redwood Vintners	175.00
Remy Amerique	91269.43
Renaissance Vineyards	1605.23
Rex Hill	1160.86
Ridge Vineyards	12678.00
Robert Mondavi	266009.10
Robert Sinskey	3284.00
Roederer US Marketing	12915.00
Rombauer Vineyards	3214.00
Ron Berger Imports	90.56

Rosemount Estate	27528.00
Rosenblum Cellars	2149.00
Round Hill Cellars	17990.07
Royal Wine	112.00
Rutherford Hill Winery	40.00
St Supery	144.00
Saddleback Cellars	1884.00
Saintsbury	9743.00
Sanford Winery	8541.53
San Francisco Wine Exchange	7487.66
Santa Barbara Winery	1288.00
Santino Wines	5984.00
Sazerac Co Inc	487245.32
Schapiro Wine	86.00
Scharffenberger Cellars	240.00
Schieffelin & Somerset	654721.82
Schramsberg Vineyards	10556.73
Seagrams Companies	1895502.70
Sebastiani Vineyards	174465.48
Seghesio Wineries	208.00
Shaw Ross Intl Importers	6662.69
Shenandoah Vineyards	94.00
Sherman David Corp	334191.87
Sidney Frank Importers	161319.42
Silver Oak	11828.00
Silverado Hill	5663.00
Simon Levi (World Vintage)	47730.73
Skyy Spirits	5350.50
Sonoma Cutrer Vineyards	25190.00
Sonora Winery	1214.00
Spottswoode Vineyards	2944.00
Stags Leap Wine Cellars	56019.49
Stags Leap Winery	21718.00
Ste Chapelle USA	44488.42
Steltzner Vineyards	5163.54
Stevenot Winery	19543.87
Stimson Lane	104648.21
Storybrook Mountain Vineyards	534.00
Straus Marketing	372.00
Strong Vineyards	2360.00
Sutter Home Winery	182792.65
Swanson	1248.00
Takara Sake USA Inc	1572.74
Todhunter	13164.96
Trefethen Vineyards	33676.00
Trentadue	1026.00
Turnbull Cellars	144.00
Tyee Wine	647.00
Tyfield Importers	8974.70
US Distilled Products	10012.02
United Distillers Glenmore	924060.28
V Sattui	393.25

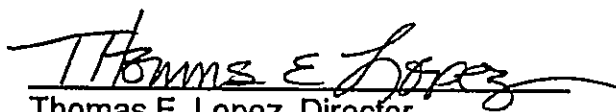
Val D'Orbieu	10079.00
VanWinkle JP	351.00
Ventana Vineyards	574.00
VIAS Imports	310.00
Victoire Imports	9927.19
Vincent Arroyo Winery	90.00
Vineyard Brands	17495.24
Vinformation	12882.47
Vintage Funding	136.00
Vintage Northwest	50.00
Vintage Wine (Div Paterno)	632.70
Vintners Intl Co Inc	30556.54
Vintwood	342.75
Walker MS	3466.40
Walker Hiram	1288658.71
Waterbrook Winery	265.00
Weibel Vineyards	94.00
Wein Bauer	22976.54
Western Food & Beverage	46.35
Weygandt Metzler	2311.20
Whitehall Lane	1839.00
White Oak	108.00
White Rock Distillers	91673.70
Wildman Frederick	22091.00
Wildwood Marketing	4805.50
Williamette Valley	308.14
Williams & Selyem Winery	200.00
Wilson Daniels	99902.94
Wine Alliance	50666.55
Winebow	12273.66
Wine Group	350767.49
Wine Is Fine	692.22
Wine Sellers	48157.70
Wine World Inc	241648.38
Wisdom Import	595.08
ZD Wines	4827.97
Zaca Mesa Winery	11534.00
TOTAL	24829343.37

\*\*\*\*\*

CERTIFICATE

\*\*\*\*\*

This is to certify that I, Thomas E. Lopez, Director of the Wyoming Liquor Commission, have verified the balance sheet herein together with accounting schedules, and they are to the best of my knowledge and belief true and correct.

  
Thomas E. Lopez, Director  
WYOMING LIQUOR COMMISSION