

Annual Report: Wyoming Infrastructure Authority, an Instrumentality of the State of Wyoming

Agency Number: 032

Agency Information:

Director:

Lloyd Drain through July, 31, 2015. Effective August 1, 2015, Jason Begger will become the Director.

Contact Person:

Holly Martinez, Administrative and Communication Manager
200 East 17th Street, Suite B
Cheyenne, WY 82010
(307)635-3573

WIA Board of Directors: The authority is governed by a five-member Board of Directors appointed by the Governor, with the advice and consent of the Senate.

WIA Board Members include:

- Mike Easley (Chairman): CEO of Powder River Energy Corporation in Sundance, WY
- David Sparks (Member): Senior Research Scientist, TTI, and Transportation Executive in Jackson, WY
- Don Collins (Treasurer): CEO, Western Research Institute in Laramie, WY
- Mark Stege (Member): Vice President of Operations, Cheyenne Light, Fuel & Power in Cheyenne, WY
- Ken Miller (Member): President & CEO (Retired), Millennium Bulk Terminals Longview, LLC in Longview, WA

Website:

www.wyia.org

Statutory References:

State of Wyoming Statutes, **Title 37**—Public Utilities, Chapter 5; **Title 9**—Administration of the Government:

- **37-5-301 thru 37-5-307:** Creation of the Wyoming Infrastructure Authority (WIA), an instrumentality of the State; purpose; duties (including coal exports), powers; bonding authority; use of revenues; and not subject to the Wyoming Public Service Commission jurisdiction;
- **37-5-203:** Authority to issue bonds, issuance requirements and amount;
- **37-5-401 thru 37-5-408:** Legislative findings; bonding authority (issuance, amount, security, exemption from State taxation, powers, duties and limitations); and
- **9-4-831:** Investment of public funds

The WIA, an instrumentality of the state, was established by the Wyoming Legislature in 2004 to diversify and expand the state's economy through improvements in the electric transmission system and to facilitate the increased utilization of Wyoming's energy resources. The enabling legislation authorizes the WIA to plan, finance, construct, develop, acquire, own, maintain and operate transmission infrastructure within and outside the state of Wyoming.

In 2006, the Legislature expanded the WIA role to include the encouragement and development of advanced coal and energy technologies to facilitate clean energy production and transmission of energy.

In the 2014 Legislative Session, the Wyoming Legislature expanded the purview of the WIA to include coal exports effective July 1, 2014 (FY2015)

In addition, the WIA has \$1 billion in bonding authority for financing of infrastructure relative to facilities in-state and out-of-state within its legislative purview.

Basic Information:

Number of Employees: 2

Clients Served: The Wyoming Infrastructure Authority (WIA) provides support and advocacy to infrastructure and technology developers within and outside the State of Wyoming which utilize Wyoming resources. Such infrastructure and technology includes Carbon Capture Sequestration and Utilization (CCUS) Technology; Value Added Coal Technologies (VACT); Coal Exports to foreign markets; Power Transmission Projects; and Power Generation Projects.

The current number of stakeholders is approximately 1,400 throughout the U.S. and worldwide.

Budget Information/Expenditures for FY15:

The WIA has a 2015-2016 Biennium Budget of \$1,620,032. A Supplemental Budget Request in the amount of \$250,000 was approved in July, 2015.

The anticipated expenditures for fiscal FY2015 were \$810, 016.

Primary Functions:

The **Mission** of the WIA is to diversify and expand the state's economy by adding value to Wyoming's energy resources and infrastructure for the benefit of Wyoming and the region

The **Vision** of the WIA is to advance Wyoming's Energy Strategy by promoting the value of Wyoming's energy resources; supporting expanded infrastructure; enhancing resource development and operation; and ensuring a credible and objective voice for Wyoming.

Performance Highlights/Major Accomplishments of FY2015:

The performance of the WIA is measured by the success relative to the execution of its Strategic Plan. The strategic themes and corresponding initiatives are as follows:

1. KEY INITIATIVES

A. Carbon Capture, Utilization and Sequestration (CCUS); and Other Value-Added Conversion Technologies (VACT):

B. Coal Exports to International Markets:

C. Power Generation & Transmission:

2. BONDS; BUDGET; & REGULATORY MATTERS

A. Bonding Authority:

B. Budget Considerations:

C. Monitoring Regulatory Matters:

3. STAKEHOLDER & ADMINISTRATIVE MATTERS

A. Stakeholder Engagement Opportunities:

B. Stakeholder Advocacy Plans:

C. Board, Staff and Consultants Requirements:

Story Behind the Performance in FY 2015:

A summary of FY2015 accomplishments relative to the WIA Strategic Plan is as follows:

1. The FY2015 Strategic Plan is aligned with Governor Mead's Energy Policy and is executed in a coordinated, collaborative manner with a significant number of State Agencies; Instrumentalities; the University of Wyoming; Infrastructure Developers; and other entities in Wyoming which includes:
 - a. Governor Mead's Energy Policy Office
 - b. Wyoming Public Service Commission
 - c. Wyoming Office of Consumer Advocate
 - d. Wyoming Business Council
 - e. Wyoming Pipeline Authority
 - f. Department of Environmental Quality
 - g. Wyoming Game & Fish Department
 - h. Wyoming Department of Revenue
 - i. University of Wyoming
 - j. University of Wyoming's School of Energy Resources
 - k. Wyoming Office of Attorney General
 - l. Economic Development Entities in the State
 - m. TransWest Express
 - n. Power Company of Wyoming
 - o. Rocky Mountain Power/PacifiCorp
 - p. DATC
 - q. Pathfinder Resources
 - r. Millennium Bulk Terminals
 - s. SSA Marine
 - t. Arch Coal
 - u. Peabody Energy
 - v. Cloud Peak Energy
 - w. Wyoming Wind & Power
 - x. LS Power
 - y. Western Area Power Administration (WAPA)
 - z. Many other who make up our list of 1,400 stakeholders
2. **Carbon Capture Utilization and Sequestration (CCUS); Value Added Coal Technologies (VACT); and Regulatory Issues:** The WIA has ramped up efforts for this Strategic Initiative to counter the growing anti-coal and anti-fossil energy threats by advancing and promoting sustainable technologies for use of Wyoming fossil energy resources. The WIA website contains a significant amount of information on projects being developed in the U.S.; Canada; and worldwide. Such information may be viewed [here](#).

The WIA has been active in these areas in FY2015 as follows:

- a. The WIA has been an active supporter of **Wyoming's Integrated Test Center (ITC)** relative to both the funding and the necessary planning leading to the installation of the facility. The WIA's Chairman of the Board, Mike Easley, has been a key player in the development of the ITC.
- b. The three (3) WIA annual energy conferences have featured a variety of topics relative to this strategic initiative.

- c. A tour of mining and generation facilities, funded by the WIA, was conducted in FY2015 for stakeholders from Washington State. The tour, led by the NEWY group included the Black Thunder Mine; the Dry Fork Generation Station; and other areas of interest in the Gillette area.
 - d. In FY2015, the WIA funded two (2) tours of the [Saskpower post-combustion CCUS facility](#) named the Boundary Dam Project in Canada. Those on the tours included members of the Wyoming Legislature; WIA Board Members; WIA staff; and others.
 - e. A tour of the [Mississippi Power Kemper County IGCC Plant](#) in Mississippi and the [National Carbon Capture Center](#) was scheduled in FY2015 and was toured by Representative Lloyd Larsen; Dr. Rob Godby, Director, UW's School of Energy Resources and Public Policy; three (3) WIA Board Members; and two (2) WIA staff on July 21-23.
 - f. The WIA commissioned the University of Wyoming to conduct a Coal Economic Impacts Study. This is the first Study of its kind since the 1990's and its release was very timely. The Study has been used as a resource across the US and includes the adverse impact of regulations. The Study and other related documents may be viewed [here](#).
 - g. Regulations such as EPA's Section 111(b) & 111(d) proposed and CO₂ emission reduction standards for coal-fired generation plants; Mercury & Air Toxic Standards (MATS); and other regulations have been closely followed by the WIA and a number of presentations were provided at the WIA Energy Conferences.
3. **Coal Exports:** The 2014 Wyoming Legislature introduced and enacted legislation pursuant to HB147 with expanded the purview of the WIA to include Coal Exports effective July 1, 2014. In FY2015, the WIA was engaged in a number of activities relative to Coal Exports to build key relationships and develop a deep understanding of the challenges and opportunities as follows:
- a. A tour of the [Millennium Bulk Terminal](#) Proposed Coal Export facility in Longview, WA by Loyd Drain, Executive Director and Don Collins, WIA Board Member.
 - b. A tour of the [Gateway Pacific Terminal](#) Proposed Coal Export facility at Cherry Point, near Bellingham, WA. Those on the tour included Wyoming Senators Chris Rothfuss and Jim Anderson; Don Collins; and Loyd Drain.
 - c. The WIA assisted with a video on interstate commerce which includes footage of Governor Mead. The video may be viewed [here](#).
 - d. The WIA assisted with an Economic Impact Study in Cherry Point where the Gateway Pacific Terminal is being developed. The Study may be viewed [here](#).
 - e. A significant number of meetings; conference calls; presentations at the WIA's Energy Conferences and at other conferences; and data has been compiled in cooperation and collaboration with the key entities engaged in coal exports.
 - f. In the 2015 Legislative Session, the Wyoming Legislature amended the WIA's Bonding Authority to include the financing of infrastructure which is sited out of state and within the legislative purview of the WIA.
 - g. A significant amount of data relative to coal export terminals worldwide; shipping rates; types of competing coals; vessel size; SWOT analysis for exporting coal to foreign markets; and other relative information.

- h. A Life Cycle Analysis for Powder River Basin Coal from mine to end-use was initiated and commissioned in FY2015. The Study participants include the National Energy Technology Laboratory (NETL); Duke University; the University of Calgary; and the Western Research Institute (WRI) is coordinating the Study which is scheduled to be completed in August, 2015 and will consist of two documents—one from NETL and the other from Duke University & the University of Calgary with WRI coordinating both.

A presentation on the Study was presented at the WIA's Spring Energy Conference in June, 2015 and may be [viewed here](#). In addition, 3rd party entities have been supporting the Study with data and advice--those entities include:

- DOE's Fossil Fuel Group
- Worley Parsons
- National Rural Electric Cooperative Association (NERCA)
- CCUS Global Institute
- Millennium Bulk Terminals
- SSA Marine
- Cloud Peak Energy
- Dresser Rand
- Fern Oil
- National Bureau of Asian Research
- Southern Company
- Lighthouse Resources
- Arch Coal
- BNSF

- i. Proposed Export Facilities under Development: Some of the major projects which would increase total U.S. capacity include the following:

- Millennium Bulk Terminals: Millennium is currently engaged in the clean-up and redevelopment of the former Reynolds aluminum smelter site on the Columbia River in Cowlitz County near Longview, Washington. The aluminum smelter shut down over 10 years ago. The 540-acre site currently employs over 30 people and is a working port supporting local industry and manufacturing efforts across Washington State. Millennium imports alumina, a material used in the production of aluminum, and transloads that raw product for shipment to Alcoa's Wenatchee Works aluminum smelter. The smelter in central Washington sustains 467 jobs and 1,070 indirect jobs in that area. In addition, Millennium currently transloads coal from rail to truck to supply Weyerhaeuser, a forest products company; this coal serves as fuel to assist in burning wet, woody waste material for electrical generation. Millennium is working with Northwest Alloys (Alcoa), as well as state and local agencies, to clean up the site and redevelop it into a world-class import and export facility. A major focus of the redevelopment is the proposed coal export facility, which will utilize less than 200 acres of the site. The existing dock and other acreage are available to other potential developments for additional bulk commodities for import or export.

A summary of the proposed Coal Export Project:

- Annual Capacity: 44 million metric tonnes
- Permitting Status: Scoping summary report released and draft EIS was originally scheduled for publication in September 2015, now expected in November 2015.
- Total Cost: \$650 Million
- Number of direct and indirect jobs (O&M): 300
- In-Service Date: 2018

- Project Link: <http://millenniumbulk.com>
- **Gateway Pacific Terminal:** Gateway Pacific Terminal will be a multi-commodity, dry bulk cargo-handling facility on nearly 1,500 acres in Whatcom County, Washington, with development occurring on about one-quarter of the site. The shipping, stevedoring, and warehousing facility – to be the largest on the West Coast of the U.S. – is the latest innovation of SSA Marine, a Northwest company that is a global leader in maritime services. The project will provide a highly efficient portal for American producers to export dry bulk commodities such as grain, potash, and coal to Asian markets.

A summary of the Project:

- Annual Capacity: 54 million tons
- Permitting Status: Scoping for the Environmental Impact Statement (EIS) was completed on January 22, 2013. EIS currently being undertaken by county, state, and USACE with draft expected in Q2 2016
- Total Cost: \$665 Million
- Number of Jobs (O&M): 1,250
- In-Service Date: TBD
- Project Link: <http://gatewaypacificterminal.com>
- **Morrow Pacific Terminal:** The Morrow Pacific coal export project near Boardman, OR is committed to doing business the Oregon way. The project is setting new standards for protecting the environment, while supporting the economy. The project will create thousands of much-needed construction jobs and operations jobs. At full capacity it will pay more than \$4 million in taxes annually to Columbia and Morrow counties and contribute about \$800,000 a year to K-12 schools in each county.

A summary of the Project:

- Annual Capacity: 8.8 million tons
- Permitting Status: Oregon DEQ issued air quality, water quality and construction permits. Permits from Oregon Department of State Lands and the U.S Army Corps of Engineers are needed. The State of Oregon has recently denied the permit to construct; however, efforts continue.
- Total Cost: \$242 Million
- Number of Jobs (O&M): 100
- In-Service Date: TBD
- Project Link: www.MorrowPacific.com

4. **Transmission Update:** There has and continues to be measurable progress relative to some of the six (6) transmission projects under development. The permitting process and the issues surrounding such are a big part of such progress.

Transmission projects where activity occurred in FY 2014 include:

- a. **Gateway West** (GWW): a Final Environmental Impact Statement (FEIS) was published by the Bureau of Land Management (BLM) in April 2013 and a Record of Decision (ROD) was issued on Nov 14, 2013. PacifiCorp continues to pursue some siting issues together with assessing the need to construct the transmission line given the fact that much of the projected power demand growth has slowed dramatically.
- b. **Gateway South** (GWS): a Draft Environmental Impact Statement (DEIS) was published by the BLM on February 21, 2014. PacifiCorp continues to pursue a FEIS together with

assessing the need to construct the transmission line given the fact that much of the projected power demand growth has slowed dramatically.

- c. [TransWest Express](#) (TWE): a Draft Environmental Impact Statement (DEIS) was published by the BLM and Western Area Power Administration (Western) in June 2013 and a FEIS was published on April 30, 2015. The project team at TransWest is currently pursuing the ROD which should be published in WIA's FY2016.
 - d. [Zephyr](#): Duke American Transmission Company (DATC), a joint venture between Duke Energy and American Transmission Company, remains in the pre-NEPA stage. A compressed air energy storage (CAES) component located in Utah has been added to the project package.
 - e. [WCI Project](#): the development of this Project is equally owned by the WIA and LS Power (lead developer). A RFP by the Southeast Wyoming Economic Development District was issued in late May, 2015 and one of the components of the RFP is to conduct a grid analysis of the four-county area in SE Wyoming. The study is scheduled for completion in December, 2015 and should the grid analysis reveal the TOT3 constraint near the WY/CO border still exist, such will be the catalyst for a renewed effort to develop the transmission project.
5. **Generation Update:** While the number of wind farms under development has dropped dramatically in FY2015 due to lack of transmission capacity and market forces, some wind generation projects remain active:
- a. [Chokecherry and Sierra Madre Wind Energy Project](#) in Carbon County continues to proceed with the necessary permitting requirements. This facility, when built, will contain up to 1,000 wind turbines. The project developer is the Power Company of Wyoming. A ROD was issued in October of 2012.
 - b. There are several other small projects in various stages of development

Black Hills completed work on a 132 MW natural gas-fired generation facility located near Cheyenne. The [Cheyenne Prairie Generation](#) facility commenced operations in FY2015.

6. **Outreach to California:** An outreach initiative was commenced in November of 2012 and a number of face to face meetings were held in FY2015. To-date face to face meetings with over ninety (90) key stakeholders in California have been conducted. Key individuals include the following:

Governor Brown's Office

- Michael Picker, Senior Advisor on Renewables and current CA PUC President
- JR DeLaRosa, Advisor to Governor Brown for Renewable Energy

California Legislature

- Sue Kiteley, Assembly Energy Committee Sr Advisor to Steven Bradford
- A subsequent meeting was held with some of Sue colleagues on 2/28/2013 at her request
- Kellie Smith, Chief Consultant, Senate Committee on Energy, Senator Alex Padilla

California PUC

- Former President Michael Peevey
- Commissioner Mike Florio
- Commissioner Mark Ferron
- Commissioner Carla Peterman
- Frank Lindh, General Counsel
- Harvey Morris, Assistant General Counsel

- Joe Como, Director, Division of Rate Payer Advocates; Joseph Abhulimen, Program & Project Supervisor; Karin Hieta, Program and Project Supervisor; and Chloe Lukins, Program Manager
- Nancy Ryan, Deputy Executive Director
- Marcelo Poirier, Legal and Policy Advisor
- Ed Randolph, Director, Energy Division
- Paul Douglas, Supervisor, Renewable Procurement and Resource Planning
- Sara Kamins, Energy Advisor to Commissioner Ferron
- Sean Simon, Policy Analyst & Cheryl Lee, Policy Analyst
- Kevin Dudney, Energy Storage Manager
- Carlos Velasquez, Regulatory Analyst
- Carol Brown, Chief of Staff to President Peevey
- Paul Clanon, Executive Director
- Julie Fitch, Chief of Staff to Commissioner Carla Peterman

CAISO

- Bob Foster, former Chairman of the Board
- Stephen Berberich, President and CEO
- Don Fuller, VP External Affairs
- Tom Doughty, Director, Customer Service and Stakeholder Affairs
- Keith Casey, VP Market & Infrastructure Development
- David Timson, Account Manager
- Neil Millar, Executive Director, Infrastructure Development
- Mark Rothleder, VP Renewable Integration
- Clyde Louton, Sr Advisor Renewable Integration
- Shucheng Liu, Principal Market Development
- Karl Meeusen, Market Design & Regulatory Policy Lead, CAISO
- Stacey Crowley, Director of Regional Affairs

California Energy Commission (CEC)

- Commissioner Karen Douglas
- Commissioner Janea Scott
- Commissioner Andrew McAllister
- Drew Bohan, Chief Deputy Director to Executive Director Robert Oglesby
- Mark Hesters, Senior Transmission Planner
- Galen Lemei, Advisor to Commissioner Douglas
- Jennifer Nelson, Advisor to Commissioner Douglas
- Patrick Saxton, Advisor to Commissioner Andrew McAllister
- Bill Keese, Former Commissioner

California Air Resources Board (CARB)

- James Goldstene, Executive Officer

Northern California Power Authority (NCPA)

- Jonathan Changus, Director Member Services and Regulatory Affairs

Natural Resources Defense Council

- Carl Zichella, Director, Western Transmission
- Noah Long, Legal Director, Western Energy Project, Energy & Transportation Program; and Clean Energy Counsel, Land & Wildlife Program

Others

- Frank Wolak, Holbrook Working Professor of Commodity Price Studies in the Department of Economics at Stanford University
- James Bushnell, Associate Professor of Economics, UC-Davis and the National Bureau of Economic Research
- Gary Ackerman, Executive Director, Western Power Traders Forum
- Matt Burkhart, V.P. Procurement, San Diego Gas & Electric
- Les Stark, SR. V.P. Regulatory Affairs, Southern California Edison
- Mark Nelson, Director of Integrated Planning & Strategy, Southern California Edison
- Marc Lifsher, LA Times reporter
- Jim Detmers, former Chief Operating Officer, CAISO
- Jesus Arrendondo, Advantage Consulting
- Sam Enoka, President & CFO, VIASYN, Inc
- Jeff Harris, Principal, Ellison, Schneider & Harris L.L.P.
- Nancy Rader, Executive Director, California Wind Energy Association
- Fong Wan, Sr. V.P. Energy Procurement; Gary Jung, Sr. Director, Renewable Energy Procurement
- Richard Polanco, former California State Senate Majority leader
- Ron Nichols, General Manager; Dr Fred Pickel, Consumer Advocate; Randy Howard; and Aram Benyamin, Los Angeles Department of Water and Power (LADWP)
- Nancy Ryan, Director, Policy and Strategy, E3 Consulting
- Katie McCormack, Program Director, Energy Foundation
- Jan Smutny-Jones, Director, California Independent Producers Assoc
- Ziad Alaywan, President & CEO, Zglobal
- Danny Curtin, Director, California Carpenters Union
- Jennifer Rouda, CH2MHILL
- Dan Wood, Principal, USE Consulting
- Ron Calvert, USE Consulting
- Ryan Wiser, UC-Berkeley
- Kevin Novan—UC-Davis
- Jack Caswell, Bureau Veritas
- Erec DeVost, Ecology & Environment
- Barry McDonald, TetraTech
- Jan Strack, SDG&E

The centerpieces of the outreach initiative in FY2015 include the [2011 WECC 10 year Transmission Plan](#); the [NREL California-Wyoming Grid Integration Study](#) commissioned by the WIA; the [geographic diversity of wind research being conducted by the University of Wyoming](#); the [2014 NREL WY/CA Grid Integration Study](#); and the fact that Wyoming already is a major contributor to supplementing California indigenously produced natural gas. Natural gas production from Wyoming provides approximately thirty-eight percent (38%) of the total natural gas needs in California.

In FY2015, the completion of two (2) WIA commissioned studies relative to the value proposition of moving Wyoming wind to California. The Phase II WY/CA Geographic Diversity Study was completed by Dr. Jon Naughton at the University of Wyoming and presented at the WIA's Spring Energy Conference in June, 2015. The video presentation is available [here](#). In addition, a white paper report entitled New Metrics for Acquiring Renewable Energy was completed by James Detmers, former Chief Operating Office for the California Independent Grid Operator (CAISO) and presented at the WIA's Spring Energy Conference in June, 2015. The video presentation is available [here](#). Press Releases for both of these studies are scheduled for formal release on July 27, 2015 ahead of a WIA meeting in Berkeley, CA on July 28th. The meeting announcement and agenda are available [here](#).

Other factors which support the value proposition for delivering Wyoming wind to California to support the construction of new high-voltage transmission from Wyoming to California:

- a. The California Legislature is currently working on legislation to increase California's Renewable Portfolio Standard from 33% to 50% which will pave the way for the likelihood of Wyoming's world class wind being tapped to satisfy a portion of the differential demand which will be created when the legislation becomes law.
 - b. The [Diablo Canyon Nuclear Power Plant](#) continues to operate under licenses which expire in 2024 and 2025, Such licenses may not be renewed which will result in the need for more dispatchable power in the future--the facility is made up of 2 units—1,172 & 1,178 MW.
 - c. Seventeen (17) gas-fired once-through cooling units will be shut down with 2 or 3 being repowered—these units have used sea water for cooling in the past—the restriction on this type of cooling has compliance dates of 2015-2020 for gas-fired units and 2022 & 2024 for the California's remaining nuclear facility pursuant to California's [Once-Through Cooling Regulations](#). This is a potentially significant issue for CA in terms of meeting their generation needs.
7. **Advocacy for Natural Gas-Fired Generation in Wyoming:** the WIA has and continues to be a supporter of natural gas as a resource that can be developed with wind energy and delivered to the marketplace on a dispatchable basis to address the variability of wind and solar energy. In FY2015, the WIA led an analysis on Natural Gas-Fired Generation at Altitude. Those entities which were part of the analysis included General Electric (GE); the University of Wyoming; the University of Colorado; the Morley Company; and the WIA. GE is scheduled to publish the study in early FY2016.

In addition, in FY2015 the WIA has initiated a Wind-Gas Hybrid System analysis. A team comprised of the Universities of Wyoming and Colorado; the Morley Company; and the WIA. A gas-fired generation manufacturer will be tapped in FY2016 to lead the analysis.

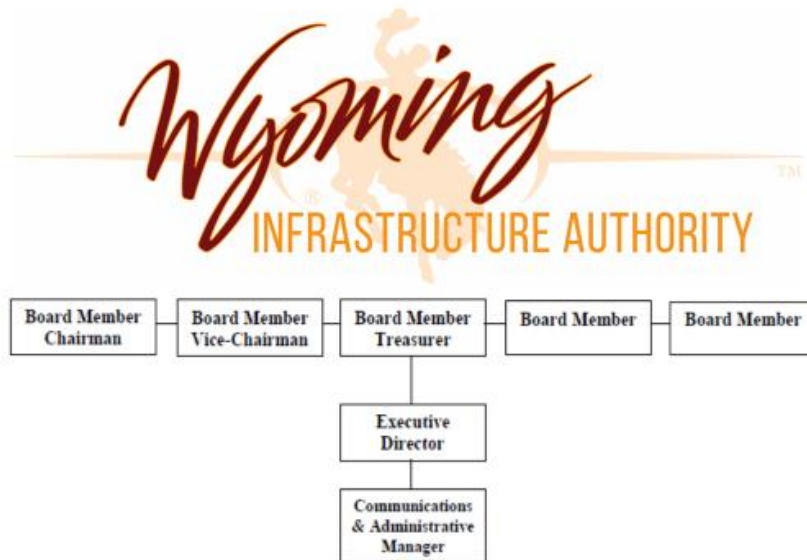
8. **A Summary of the Studies, commissioned wholly or in-part by the WIA, completed and/or initiated in FY2015:**
- a. **University of Wyoming's Coal Economic Impact Study:** [view here](#)
 - b. **Whatcom County Industrialization Impacts Study:** [view here](#)
 - c. **Life Cycle Analyses for Powder River Basin Coal from mine to end-use:** *to be completed in August, 2015---a presentation on the documents which will be part of the Study may be [viewed here](#)*
 - d. **SWEDD Grid Analysis and Power Resource Availability Study:** *to be completed in December, 2015—RFP may be [viewed here](#)*
 - e. **New Metrics for Acquiring Renewable Energy to be added to existing Portfolios:** [view here](#)
 - f. **University of Wyoming Phase II Geographic Diversity Study:** [view here](#)
 - g. **Analysis of Natural Gas-Fired Generation at altitude:** *to be posted on the WIA website*
 - h. **Wind-Gas Hybrid System for Wyoming Wing & Natural Gas:** *to be completed in FY2016*
 - i. **GIS Mapping of Transmission Lines in Wyoming:** *being conducted by the University of Wyoming*

9. **WIA Energy Conferences hosted by the WIA Board of Directors:** the WIA's three (3) annual public energy conferences help further the WIA's charter featuring topics relative to CCUS and VACT Technologies: Coal Exports; and Power Transmission & Generation are featured with quality speakers from across the U.S. and the World. In the FY2015 meetings, a significant number of speakers were scheduled. The presentation slide decks and videos for the Fall Energy Conference are available [here](#); the Winter Energy Conference presentations and videos are available [here](#); and the Spring Energy Conference documents and videos are available [here](#).

Expenditures for FY2015:

EXPENDITURES BY CATEGORY FOR FY2015	
Supportive Services	Amount
Utilities	\$3,549.02
Communications	\$11,052.03
Dues, Licenses, Registration	\$2,320.92
Advertising	\$27,091.36
Travel in State	\$66,439.57
Travel Out of State	\$39,893.00
Office Supplies, Printing	\$6,608.60
Soft Goods & Housekeeping	\$680.59
Real Property Rental	\$21,121.37
Insurance, Bond Premium	\$32,579.47
Total Supportive Services	\$211,335.93
Central Services	
Telecommunications	\$10,903.12
Contracted Services	
Professional Fees	\$596,143.21
TOTAL EXPENDITURES	\$818,382.26

WIA Organization Chart:



Content Contact: Jason Begger (Jason.Begger@wyo.gov)

###