

Wyoming
Game and Fish
Commission



**2015
Deer Hunting
Regulations**



Department Website: <http://wgfd.wyo.gov>

CONTENTS

Access & Vehicular Travel on PLPW Walk-in Areas and Hunter Management Areas	32
Access Yes	33, Back Cover
Age Restrictions	33
Archery Hunting Seasons, Licenses and Equipment	13, 33
Artificial Light	33
Automatic Weapon and Silencer	33
Bag Limits	33
Baiting of Big Game Animals	33
Check Stations	33
Chronic Wasting Disease (CWD)	34
Closed Areas	34
Clothing Requirements; Fluorescent Orange	34
Conservation Stamp Required	34
Dating and Display of Game Animal Carcass Coupons	34
Definitions	34-36
Department Office Telephone Numbers	Back Cover
Department Website	Front Cover
Disabled Hunter Information	36
Disabled Hunter Season Extension	14
Duplicate and Replacement License	36
Emergency Closures	36
Guides Required; Resident Guide License	36
Harvest Survey	36
Helicopter Surveys During Deer/Elk Seasons	3
Hunt Area Descriptions	14-19, 22-32
Hunt Area Map	20-21
Hunter Safety/Mentor Program	36
Important Hunting Information	32
Importation or Transportation of Deer, Elk and Moose Taken from Identified CWD Areas Outside of Wyoming	36
Issuance of Deer Licenses; Number of Licenses	37
Landowner Coupons	37
Legal Firearms for Hunting Big or Trophy Game	37
License Fraud	37
Nonresident Region General Deer License Quotas	14
Open Hours for Taking Big Game, Trophy Game and Small Game Animals	37
Outfitter Information	37
Permission to Hunt, Fish or Trap	37
Precautions When Hunting in Areas Occupied by Grizzly Bears	38
Prohibited Acts	38
Regular Hunting Seasons	3-13
Retention of Evidence to Identify Sex, Species and Horn or Antler Development of Big Game Animal Harvested	38
Retrieval of Edible Portions of Game Meat from the Field	38
Shipping Game Animals Out of State	38
Shipping Game Animals Within Wyoming	39
Stop Poaching Program	Back Cover
Taking Predatory Animals and Predacious Birds	39
Transportation and Disposal of Deer, Elk and Moose Taken from CWD Hunt Areas Within Wyoming	39
Vehicle Restrictions on Federal Land	39
Wildlife Damage Management Stamp	39
Wildlife Violator Compact	39
Wind River Reservation	39
Youth Deer Seasons	14

ATTENTION HUNTERS

Department personnel will be conducting helicopter surveys for deer and elk populations November through January.

Every effort will be made to avoid flying where hunters are observed.

2015 DEER HUNTING SEASONS

Section 1. Authority. This regulation is promulgated by authority of W.S. § 23-1-302, § 23-1-703 and § 23-2-104.

Section 2. Regular Hunting Seasons.

Hunt areas, season dates and limitations.

Hunt Area	Type	Season Dates		Quota	License	Limitations
		Opens	Closes			
1		Nov. 1	Nov. 20		General	Antlered mule deer off private land; any mule deer on private land
1		Nov. 1	Nov. 30		General	Antlered white-tailed deer off private land; any white-tailed deer on private land
1, 2, 3	8	Nov. 1	Nov. 30	2000	Limited quota	Doe or fawn white-tailed deer valid on private land
2		Nov. 1	Nov. 30		General	Antlered deer off private land; any deer on private land
2	6	Nov. 1	Nov. 30	250	Limited quota	Doe or fawn valid on private land
3		Nov. 1	Nov. 30		General	Antlered deer off private land; any deer on private land
4		Nov. 1	Nov. 20		General	Antlered deer off private land; any deer on private land except the lands of the State of Wyoming's Ranch A property shall be closed
4	6	Nov. 1	Nov. 20	200	Limited quota	Doe or fawn valid on private land
5		Nov. 1	Nov. 20		General	Antlered deer off private land; any deer on private land
5	6	Nov. 1	Nov. 20	50	Limited quota	Doe or fawn
6		Nov. 1	Nov. 20		General	Antlered deer off private land; any deer on private land
7		Oct. 1	Oct. 15		General	Antlered mule deer or any white-tailed deer
8		Oct. 1	Oct. 15		General	Antlered mule deer or any white-tailed deer
9		Oct. 1	Oct. 15		General	Antlered mule deer or any white-tailed deer
10	1	Oct. 1	Oct. 15	100	Limited quota	Antlered deer

Hunt Area	Type	Season Dates		Quota	License	Limitations
		Opens	Closes			
10, 11, 12, 13, 14	3	Oct. 1	Nov. 30	300	Limited quota	Any white-tailed deer
10, 11, 12, 13, 14	8	Oct. 1	Nov. 30	300	Limited quota	Doe or fawn white-tailed deer
11		Oct. 1	Oct. 15		General	Antlered mule deer or any white-tailed deer
11		Oct. 16	Nov. 30		General	Any white-tailed deer
12		Oct. 1	Oct. 15		General	Antlered mule deer or any white-tailed deer
12		Oct. 16	Nov. 30		General	Any white-tailed deer
12	6	Oct. 1	Nov. 30	50	Limited quota	Doe or fawn
13		Oct. 1	Oct. 15		General	Antlered mule deer or any white-tailed deer
13		Oct. 16	Nov. 30		General	Any white-tailed deer
14		Oct. 1	Oct. 15		General	Antlered mule deer or any white-tailed deer
14		Oct. 16	Nov. 30		General	Any white-tailed deer
15		Oct. 1	Oct. 14		General	Antlered mule deer or any white-tailed deer
15	3	Nov. 1	Nov. 30	275	Limited quota	Any white-tailed deer
15	3	Dec. 1	Dec. 31			Unused Area 15 Type 3 licenses valid for antlerless white-tailed deer
15	6	Oct. 1	Dec. 31	350	Limited quota	Doe or fawn
15	8	Oct. 1	Dec. 31	300	Limited quota	Doe or fawn white-tailed deer
17		Oct. 1	Oct. 20		General	Antlered mule deer or any white-tailed deer
17		Nov. 1	Nov. 30		General	Any white-tailed deer
17	8	Oct. 1	Nov. 30	200	Limited quota	Doe or fawn white-tailed deer
18		Oct. 1	Oct. 20		General	Antlered mule deer or any white-tailed deer
18	8	Oct. 1	Nov. 30	50	Limited quota	Doe or fawn white-tailed deer valid on private land
19		Oct. 1	Oct. 20		General	Antlered mule deer or any white-tailed deer
19		Nov. 1	Nov. 15		General	Any white-tailed deer
19, 20	6	Oct. 1	Oct. 20	25	Limited quota	Doe or fawn valid on private land
20		Oct. 1	Oct. 20		General	Antlered mule deer or any white-tailed deer
20		Nov. 1	Nov. 15		General	Any white-tailed deer
21		Oct. 1	Oct. 15		General	Antlered mule deer or any white-tailed deer
22	1	Oct. 1	Oct. 14	300	Limited quota	Antlered mule deer or any white-tailed deer
22	3	Oct. 1	Nov. 30	50	Limited quota	Any white-tailed deer
22	8	Oct. 1	Nov. 30	25	Limited quota	Doe or fawn white-tailed deer

Hunt Area	Type	Season Dates		Quota	License	Limitations
		Opens	Closes			
23		Oct. 1	Oct. 14		General	Antlered deer off private land; any deer on private land
23		Nov. 1	Nov. 30		General	Any white-tailed deer
23, 26	3	Nov. 1	Nov. 30	100	Limited quota	Any white-tailed deer
23, 26	6	Oct. 1	Dec. 15	1900	Limited quota	Doe or fawn valid on private land
24		Oct. 15	Oct. 31		General	Antlered deer off private land; any deer on private land
24		Nov. 1	Nov. 30		General	Any white-tailed deer
24		Dec. 1	Dec. 15		General	Antlerless white-tailed deer
24	3	Nov. 1	Nov. 30	150	Limited quota	Any white-tailed deer
24	6	Sep. 1	Dec. 15	400	Limited quota	Doe or fawn valid on private land
24	8	Sep. 1	Dec. 15	Unlimited	Limited quota	Doe or fawn white-tailed deer
25		Oct. 15	Oct. 24		General	Antlered mule deer or any white-tailed deer
26		Oct. 1	Oct. 14		General	Antlered deer off private land; any deer on private land
26		Nov. 1	Nov. 30		General	Any white-tailed deer
27		Oct. 15	Oct. 31		General	Any deer
27		Nov. 1	Nov. 30		General	Any white-tailed deer
27		Dec. 1	Dec. 15		General	Antlerless white-tailed deer
27	8	Sep. 1	Sep. 30	1200	Limited quota	Doe or fawn white-tailed deer valid on private land
27	8	Oct. 15	Dec. 15			Unused Area 27 Type 8 licenses valid in the entire area
28		Oct. 15	Oct. 24		General	Antlered mule deer or any white-tailed deer
29		Oct. 1	Oct. 14		General	Antlered deer off private land; any deer on private land
29		Nov. 1	Nov. 15		General	Any white-tailed deer
29		Nov. 16	Dec. 15		General	Antlerless white-tailed deer
29	8	Sep. 1	Sep. 30	700	Limited quota	Doe or fawn white-tailed deer valid on private land north of Crazy Woman Creek
29	8	Oct. 1	Dec. 15			Unused Area 29 Type 8 licenses valid in the entire area
30		Oct. 15	Oct. 31		General	Antlered deer off private land, any deer on private land
30		Nov. 1	Nov. 30		General	Any white-tailed deer
30		Dec. 1	Dec. 15		General	Antlerless white-tailed deer
30	8	Sep. 1	Sep. 30	500	Limited quota	Doe or fawn white-tailed deer valid on private land
30	8	Oct. 15	Dec. 15			Unused Area 30 Type 8 licenses valid in the entire area
31		Oct. 1	Oct. 10		General	Antlered deer
32		Oct. 15	Oct. 31		General	Antlered mule deer or any white-tailed deer
32		Nov. 1	Nov. 15		General	Any white-tailed deer
32, 163	8	Oct. 15	Nov. 15	50	Limited quota	Doe or fawn white-tailed deer
33		Oct. 15	Oct. 31		General	Antlered deer off private land, any deer on private land
33		Nov. 1	Nov. 15		General	Any white-tailed deer

Hunt Area	Type	Season Dates		Quota	License	Limitations
		Opens	Closes			
33		Nov. 16	Dec. 15		General	Antlerless white-tailed deer
33	6	Oct. 15	Oct. 31	25	Limited quota	Doe or fawn valid on private land
33	8	Sep. 1	Sep. 30	500	Limited quota	Doe or fawn white-tailed deer valid on private land
33	8	Oct. 15	Dec. 15			Unused Area 33 Type 8 licenses valid in the entire area
34	1	Oct. 15	Oct. 31	150	Limited quota	Antlered deer
34	3	Oct. 15	Nov. 30	25	Limited quota	Any white-tailed deer
34	8	Oct. 15	Nov. 30	25	Limited quota	Doe or fawn white-tailed deer
35		Oct. 15	Oct. 31		General	Any deer
36		Oct. 15	Oct. 22		General	Antlered mule deer three (3) points or more on either antler or any white-tailed deer
36	8	Oct. 15	Oct. 22	25	Limited quota	Doe or fawn white-tailed deer
37	1	Oct. 15	Oct. 25	150	Limited quota	Antlered deer
37	3	Nov. 1	Nov. 30	15	Limited quota	Any white-tailed deer
37	6	Sep. 15	Nov. 15	25	Limited quota	Doe or fawn valid within one-half (1/2) mile of Buffalo Creek
39		Oct. 15	Oct. 25		General	Antlered deer
40		Oct. 15	Oct. 31		General	Antlered deer valid on national forest; any deer off national forest
40	6	Oct. 15	Oct. 31	50	Limited quota	Doe or fawn valid on private land
40	8	Oct. 15	Nov. 30	50	Limited quota	Doe or fawn white-tailed deer
41		Oct. 15	Oct. 24		General	Antlered deer
41	3	Nov. 1	Nov. 30	50	Limited quota	Any white-tailed deer
41	6	Oct. 15	Oct. 31	75	Limited quota	Doe or fawn valid on or within one-half (1/2) mile of irrigated land
41	8	Nov. 1	Nov. 30	50	Limited quota	Doe or fawn white-tailed deer
46		Oct. 15	Oct. 24		General	Antlered deer
47		Oct. 15	Oct. 24		General	Antlered deer
47, 51	3	Oct. 15	Nov. 30	50	Limited quota	Any white-tailed deer
47	6	Oct. 15	Oct. 31	50	Limited quota	Doe or fawn valid on or within one-half (1/2) mile of irrigated land
47	8	Oct. 15	Nov. 30	50	Limited quota	Doe or fawn white-tailed deer
50		Oct. 15	Oct. 24		General	Antlered deer
51		Oct. 15	Oct. 24		General	Antlered deer
51	6	Oct. 15	Nov. 30	75	Limited quota	Doe or fawn valid within one (1) mile of Shell Creek
51	8	Oct. 15	Nov. 30	50	Limited quota	Doe or fawn white-tailed deer
52		Oct. 15	Oct. 24		General	Antlered deer
52	6	Oct. 15	Nov. 30	25	Limited quota	Doe or fawn valid on or within one-half (1/2) mile of irrigated land
53		Oct. 15	Oct. 31		General	Antlered deer

Hunt Area	Type	Season Dates		Quota	License	Limitations
		Opens	Closes			
59		Oct. 15	Oct. 25		General	Antlered mule deer or any white-tailed deer
59, 60, 64	3	Nov. 1	Nov. 30	150	Limited quota	Any white-tailed deer; all lands within Curt Gowdy State Park, archery only; the Wyoming Game and Fish Commission's Tom Thorne/Beth Williams Wildlife Research Center at Sybille south of Wyoming Highway 34 shall be closed
59, 60, 64	3	Dec. 1	Dec. 31			Unused Area 59, 60, 64 Type 3 licenses valid for doe or fawn white-tailed deer in Area 59 and Area 64
59, 64	6	Oct. 15	Oct. 31	100	Limited quota	Doe or fawn valid on private land
59, 64	6	Nov. 1	Dec. 31			Unused area 59, 64 Type 6 licenses valid for doe or fawn white-tailed deer
59, 60, 64	8	Nov. 1	Dec. 31	125	Limited quota	Doe or fawn white-tailed deer; all lands within Curt Gowdy State Park, archery only; the Wyoming Game and Fish Commission's Tom Thorne/Beth Williams Wildlife Research Center at Sybille south of Wyoming Highway 34 shall be closed
60	1	Oct. 20	Nov. 5	100	Limited quota	Antlered deer on national forest, any deer off national forest, all lands within Curt Gowdy State Park, archery only
60	2	Oct. 20	Nov. 5	200	Limited quota	Any deer off national forest; all lands within Curt Gowdy State Park, archery only
60		Nov. 6	Nov. 30			Unused Area 60 Type 1 and Type 2 licenses valid for doe or fawn white-tailed deer valid off national forest; all lands within Curt Gowdy State Park, archery only
60	6	Oct. 20	Nov. 30	50	Limited quota	Doe or fawn; all lands within Curt Gowdy State Park, archery only
61		Oct. 1	Oct. 7		General	Antlered mule deer three (3) points or more on either antler or any white-tailed deer
64		Oct. 15	Oct. 25		General	Antlered mule deer or any white-tailed deer except the Wyoming Game and Fish Commission's Tom Thorne/Beth Williams Wildlife Habitat Management Area and the Laramie Peak Wildlife Habitat Management Area north of the Tunnel Road (Albany County Road 727) shall be closed

Hunt Area	Type	Season Dates		Quota	License	Limitations
		Opens	Closes			
64	2	Oct. 15	Oct. 25	100	Limited quota	Antlered mule deer or any white-tailed deer
65		Oct. 15	Oct. 21		General	Antlered mule deer or any white-tailed deer
65, 66	3	Oct. 15	Nov. 30	200	Limited quota	Any white-tailed deer
65, 66	8	Oct. 15	Nov. 30	100	Limited quota	Doe or fawn white-tailed deer
66		Oct. 15	Oct. 21		General	Antlered mule deer three (3) points or more on either antler or any white-tailed deer
67						CLOSED
70		Oct. 15	Oct. 21		General	Antlered mule deer three (3) points or more on either antler or any white-tailed deer
70, 74	3	Oct. 1	Nov. 30	25	Limited quota	Any white-tailed deer
70	6	Oct. 15	Nov. 30	25	Limited quota	Doe or fawn valid on private land
74		Oct. 1	Oct. 7		General	Antlered mule deer three (3) points or more on either antler or any white-tailed deer
75		Oct. 1	Oct. 7		General	Antlered mule deer three (3) points or more on either antler or any white-tailed deer
75, 76, 77	3	Oct. 1	Nov. 30	25	Limited quota	Any white-tailed deer
76		Oct. 1	Oct. 7		General	Antlered mule deer three (3) points or more on either antler or any white-tailed deer
77		Oct. 1	Oct. 7		General	Antlered mule deer three (3) points or more on either antler or any white-tailed deer
78	1	Oct. 1	Oct. 14	300	Limited quota	Antlered mule deer or any white-tailed deer
78, 79, 80, 81, 161	3	Oct. 1	Nov. 30	25	Limited quota	Any white-tailed deer
78, 79, 80, 81, 161	8	Sep. 1	Dec. 15	25	Limited quota	Doe or fawn white-tailed deer
79	1	Oct. 1	Oct. 14	300	Limited quota	Antlered mule deer or any white-tailed deer
80, 83	1	Oct. 1	Oct. 14	200	Limited quota	Antlered mule deer or any white-tailed deer
81	1	Oct. 1	Oct. 14	200	Limited quota	Antlered mule deer or any white-tailed deer
82		Oct. 1	Oct. 10		General	Antlered mule deer or any white-tailed deer
82		Oct. 1	Oct. 14		General youth license	Any deer
82	7	Oct. 1	Oct. 10	100	Limited quota	Doe or fawn valid south of the East Fork of Savery Creek; south and east of Savery Creek; and north and east of the Little Snake River

Hunt Area	Type	Season Dates		Quota	License	Limitations
		Opens	Closes			
84	1	Oct. 1	Oct. 14	50	Limited quota	Antlered mule deer or any white-tailed deer
87	1	Oct. 15	Oct. 31	50	Limited quota	Antlered mule deer or any white-tailed deer
88		Oct. 15	Oct. 21		General	Antlered mule deer or any white-tailed deer
88, 89	3	Oct. 15	Nov. 30	25	Limited quota	Any white-tailed deer, also valid in Area 66
88, 89	8	Oct. 15	Nov. 30	25	Limited quota	Doe or fawn white-tailed deer, also valid in Area 66
89	1	Oct. 15	Oct. 31	75	Limited quota	Antlered deer
90	1	Oct. 1	Oct. 31	50	Limited quota	Any deer
92		Oct. 1	Oct. 14		General	Any white-tailed deer
92		Oct. 15	Oct. 22		General	Antlered mule deer or any white-tailed deer
92		Oct. 1	Oct. 22		General youth license	Any deer
92, 94, 160	3	Nov. 1	Nov. 30	50	Limited quota	Any white-tailed deer
92, 94, 160	8	Nov. 1	Nov. 30	100	Limited quota	Doe or fawn white-tailed deer
94		Oct. 1	Oct. 14		General	Any white-tailed deer
94		Oct. 15	Oct. 22		General	Antlered mule deer or any white-tailed deer
94		Oct. 1	Oct. 22		General youth license	Any deer
96		Oct. 15	Oct. 22		General	Antlered mule deer or any white-tailed deer
96		Oct. 15	Oct. 25		General youth license	Any deer
97		Oct. 15	Oct. 22		General	Antlered mule deer or any white-tailed deer
97		Oct. 15	Oct. 25		General youth license	Any deer
97	3	Nov. 1	Nov. 30	25	Limited quota	Any white-tailed deer
97	8	Nov. 1	Nov. 30	25	Limited quota	Doe or fawn white-tailed deer
98		Oct. 15	Oct. 22		General	Antlered mule deer or any white-tailed deer, archery or muzzle-loading firearms only
100		Oct. 1	Oct. 5		General	Antlered mule deer or any white-tailed deer
100		Oct. 1	Oct. 7		General youth license	Any deer
101	1	Oct. 15	Oct. 31	25	Limited quota	Antlered deer
102	1	Oct. 15	Oct. 31	200	Limited quota	Any deer
105		Oct. 1	Oct. 31		General	Antlered mule deer or any white-tailed deer valid on national forest
105		Nov. 1	Nov. 5		General	Any deer valid off national forest
105		Nov. 6	Nov. 30		General	Antlerless deer valid off national forest

Hunt Area	Type	Season Dates		Quota	License	Limitations
		Opens	Closes			
105	6	Nov. 1	Nov. 30	25	Limited quota	Doe or fawn valid off national forest
105, 106, 109	1	Nov. 1	Nov. 15	50	Limited quota	Any deer
106		Oct. 1	Oct. 31		General	Antlered mule deer or any white-tailed deer
110		Oct. 15	Nov. 10		General	Antlered mule deer or any white-tailed deer
110, 111	8	Oct. 15	Dec. 31	100	Limited quota	Doe or fawn white-tailed deer
111		Oct. 15	Nov. 10		General	Antlered mule deer or any white-tailed deer
111	6	Oct. 15	Nov. 10	25	Limited quota	Doe or fawn valid off national forest
112		Oct. 15	Nov. 10		General	Antlered mule deer or any white-tailed deer valid on national forest
112		Nov. 1	Nov. 10		General	Any deer valid off national forest
112, 113	3	Nov. 1	Nov. 30	25	Limited quota	Any white-tailed deer
112, 113	6	Oct. 15	Nov. 10	25	Limited quota	Doe or fawn valid off national forest
112, 113	8	Oct. 15	Dec. 31	100	Limited quota	Doe or fawn white-tailed deer
113		Oct. 15	Nov. 10		General	Antlered mule deer or any white-tailed deer valid on national forest
113		Nov. 1	Nov. 10		General	Any deer valid off national forest
114		Oct. 15	Nov. 10		General	Antlered deer
115		Sep. 10	Oct. 22		General	Antlered deer
116	1	Oct. 15	Oct. 31	75	Limited quota	Any deer
116, 117, 118	3	Nov. 1	Nov. 30	100	Limited quota	Any white-tailed deer
116, 117, 118	7	Sep. 1	Oct. 14	100	Limited quota	Doe or fawn white-tailed deer valid on private land in the Wood River drainage
116, 117, 118	8	Oct. 15	Nov. 30	75	Limited quota	Doe or fawn white-tailed deer
117	1	Sep. 15	Oct. 15	50	Limited quota	Antlered mule deer or any white-tailed deer
118	1	Oct. 15	Oct. 31	25	Limited quota	Antlered deer
118	1	Nov. 1	Nov. 30			Unused Area 118 Type 1 licenses valid for any white-tailed deer
119	1	Nov. 1	Nov. 15	100	Limited quota	Antlered deer
119, 120	3	Oct. 1	Nov. 30	50	Limited quota	Any white-tailed deer
119	6	Sep. 15	Nov. 15	25	Limited quota	Doe or fawn valid on irrigated land
120	1	Nov. 1	Nov. 15	50	Limited quota	Antlered deer
120	8	Sep. 15	Dec. 15	100	Limited quota	Doe or fawn white-tailed deer

Hunt Area	Type	Season Dates		Quota	License	Limitations
		Opens	Closes			
121		Nov. 1	Nov. 10		General	Any deer
121		Nov. 11	Nov. 30		General	Antlerless deer
121	3	Nov. 1	Nov. 30	50	Limited quota	Any white-tailed deer
121	6	Oct. 15	Nov. 30	150	Limited quota	Doe or fawn
122		Nov. 1	Nov. 10		General	Any deer
122		Nov. 11	Nov. 30		General	Antlerless deer
122	3	Nov. 1	Nov. 30	50	Limited quota	Any white-tailed deer
122	6	Oct. 15	Nov. 30	150	Limited quota	Doe or fawn valid on or within one-half (1/2) mile of irrigated land within the Shoshone River drainage
123		Oct. 15	Oct. 31		General	Any deer
123	6	Oct. 15	Dec. 31	50	Limited quota	Doe or fawn valid on private land south of the Shoshone River
124		Nov. 1	Nov. 10		General	Any deer
124	3	Nov. 1	Nov. 30	50	Limited quota	Any white-tailed deer
124	6	Nov. 1	Nov. 30	50	Limited quota	Doe or fawn valid on or within one-half (1/2) mile of irrigated land
124	7	Nov. 1	Nov. 30	100	Limited quota	Doe or fawn valid west of Wyoming Highway 30 and Bighorn County Road 8, on or within one-half (1/2) mile of irrigated land
124	8	Nov. 1	Nov. 30	50	Limited quota	Doe or fawn white-tailed deer
125	1	Nov. 1	Nov. 15	100	Limited quota	Antlered deer
127		Oct. 15	Oct. 24		General	Antlered deer
127	3	Nov. 1	Nov. 30	15	Limited quota	Any white-tailed deer
128		Oct. 1	Oct. 15		General	Antlered mule deer or any white-tailed deer
128	1	Nov. 1	Nov. 20	50	Limited quota	Any deer
128	3	Nov. 1	Nov. 20	50	Limited quota	Any white-tailed deer
128	7	Nov. 1	Nov. 20	25	Limited quota	Doe or fawn valid on private land
130		Oct. 1	Oct. 7		General	Antlered mule deer or any white-tailed deer
130	1	Oct. 15	Oct. 31	25	Limited quota	Antlered deer
130	6	Oct. 15	Dec. 31	50	Limited quota	Doe or fawn valid on private land within Sweetwater County
131		Oct. 1	Oct. 4		General	Antlered mule deer four (4) points or more on either antler or any white-tailed deer
131	7	Oct. 1	Oct. 31	50	Limited quota	Doe or fawn valid within the Farson-Eden Irrigation Project
132		Oct. 1	Oct. 14		General	Antlered deer three (3) points or more on either antler

Hunt Area	Type	Season Dates		Quota	License	Limitations
		Opens	Closes			
132, 133, 168	7	Oct. 1	Oct. 14	50	Limited quota	Doe or fawn valid on irrigated land
133		Oct. 1	Oct. 14		General	Antlered deer three (3) points or more on either antler
134		Oct. 1	Oct. 14		General	Antlered mule deer three (3) points or more on either antler or any white-tailed deer
135		Oct. 1	Oct. 14		General	Antlered mule deer or any white-tailed deer
138		Sep. 15	Oct. 7		General	Antlered mule deer or any white-tailed deer
138, 139, 140, 142, 143	3	Oct. 1	Nov. 30	50	Limited quota	Any white-tailed deer
139		Sep. 15	Oct. 7		General	Antlered mule deer or any white-tailed deer
140		Sep. 15	Oct. 7		General	Antlered mule deer or any white-tailed deer
141, 162	1	Oct. 1	Oct. 21	100	Limited quota	Antlered deer
141, 162	1	Oct. 22	Oct. 31			Unused Area 141, 162 Type 1 licenses valid for antlered deer on national forest
142		Sep. 15	Oct. 7		General	Antlered mule deer or any white-tailed deer
143		Sep. 15	Oct. 7		General	Antlered mule deer or any white-tailed deer
144		Sep. 15	Oct. 7		General	Antlered mule deer or any white-tailed deer
145		Sep. 15	Oct. 7		General	Antlered mule deer or any white-tailed deer
145	3	Nov. 1	Nov. 30	60	Limited quota	Any white-tailed deer
145	3	Dec. 1	Jan. 31			Unused Area 145 Type 3 licenses valid for doe or fawn white-tailed deer
146		Sep. 15	Oct. 7		General	Antlered mule deer or any white-tailed deer
148		Sep. 15	Oct. 25		General	Antlered deer
149		Sep. 15	Oct. 7		General	Antlered mule deer or any white-tailed deer
149	8	Sep. 15	Nov. 30	50	Limited quota	Doe or fawn white-tailed deer
150		Sep. 15	Oct. 7		General	Antlered mule deer or any white-tailed deer valid west of Wyoming Highway 390
150		Sep. 15	Oct. 7		General	Antlered mule deer or any white-tailed deer valid east of Wyoming Highway 390, archery only
151		Sep. 15	Oct. 7		General	Antlered mule deer or any white-tailed deer
152		Sep. 15	Oct. 7		General	Antlered mule deer or any white-tailed deer
153		Sep. 15	Oct. 7		General	Antlered mule deer or any white-tailed deer

Hunt Area	Type	Season Dates		Quota	License	Limitations
		Opens	Closes			
154		Sep. 15	Oct. 7		General	Antlered mule deer or any white-tailed deer
155		Sep. 15	Oct. 7		General	Antlered mule deer or any white-tailed deer
156		Sep. 15	Oct. 7		General	Antlered mule deer or any white-tailed deer
157, 170	1	Oct. 1	Oct. 31	250	Limited quota	Any deer
157, 170	3	Nov. 1	Nov. 30	75	Limited quota	Any white-tailed deer
157, 170	6	Oct. 1	Nov. 10	250	Limited quota	Doe or fawn
157, 170	8	Oct. 1	Oct. 31	75	Limited quota	Doe or fawn white-tailed deer
157, 170	8	Nov. 1	Nov. 30			Unused Area 157, 170 Type 8 licenses valid on private land
160		Oct. 1	Oct. 14		General	Any white-tailed deer
160		Oct. 15	Oct. 22		General	Antlered mule deer or any white-tailed deer
160		Oct. 1	Oct. 22		General youth license	Any deer
160	6	Oct. 1	Oct. 22	25	Limited quota	Doe or fawn valid on private land
161	1	Oct. 1	Oct. 14	25	Limited quota	Antlered mule deer or any white-tailed deer
163		Oct. 15	Oct. 21		General	Antlered mule deer or any white-tailed deer
163		Nov. 1	Nov. 15		General	Any white-tailed deer
164		Oct. 1	Oct. 10		General	Any deer
164	3	Nov. 1	Nov. 30	25	Limited quota	Any white-tailed deer
165	1	Oct. 15	Oct. 31	125	Limited quota	Any deer
165	3	Oct. 15	Nov. 30	50	Limited quota	Any white-tailed deer
165	6	Oct. 1	Oct. 31	100	Limited quota	Doe or fawn valid on private land
165	8	Nov. 1	Nov. 30	100	Limited quota	Doe or fawn white-tailed deer
168		Oct. 1	Oct. 14		General	Antlered deer three (3) points or more on either antler
169		Oct. 15	Oct. 21		General	Antlered mule deer or any white-tailed deer
169		Nov. 1	Nov. 15		General	Any white-tailed deer
171		Oct. 1	Oct. 31		General	Any deer
171	3	Nov. 1	Nov. 30	75	Limited quota	Any white-tailed deer
171	6	Oct. 1	Nov. 30	250	Limited quota	Doe or fawn

Please see Important Hunting Information section of the Deer Hunting Regulations brochure regarding Chronic Wasting Disease.

Section 3. Special Archery Seasons. Hunt areas listed in this Section shall have Special Archery Hunting Seasons during the dates specified in this Section. Archers shall possess a general deer license or a limited quota deer license in addition to an archery license in order to hunt deer during any Special Archery Season.

Archers with general deer licenses shall only hunt in those hunt areas specified in Section 2 as open to hunting with a general license and may take any deer.

Archers with limited quota deer licenses shall only hunt in the hunt area(s) and for the sex and species of deer set forth by the limitations of their license as specified in Section 2 of this Chapter.

Archers with a General or Nonresident Region J deer license can hunt all of Area 64 during the Special Archery Season.

Special Archery Season Hunt Areas	Season Dates	
	Opens	Closes
1-15, 17-37, 39-41, 46, 47, 50-53, 59-61, 64-66, 70, 74-84, 87-90, 92, 94, 96-98, 100-102, 105, 106, 109-114, 116-125, 127, 128, 130-135, 141, 157, 160-165, 168-171. Curt Gowdy State Park in Area 60 closed.	Sep. 1	Sep. 30
138-140, 142-146, 148-156	Sep. 1	Sep. 14
115	Sep. 1	Sep. 9

Section 4. Disabled Hunter Season Extension.

(a) Any person qualified for and in possession of a Disabled Hunter Permit issued by the Department in accordance with Commission regulation may hunt deer five (5) days prior to the earliest opening date in the hunt area(s) and for the sex and species of deer set forth by the limitations of their license as specified in Section 2 of this Chapter.

(b) Hunters participating in a disabled hunter season extension shall be in possession of a Disabled Hunter Permit which shall be immediately produced for inspection upon request of an officer authorized to enforce this regulation.

Section 5. Youth Deer Seasons. Youth hunters who possess a full price youth deer license may take any deer during an antlered deer season in the hunt area(s) where their license is valid as specified in Section 2 of this Chapter.

Section 6. Nonresident Region General Deer License Quotas.

(a) Nonresident region general deer licenses shall only be valid within the specific region for which they are issued and for only those hunt areas in the Region as listed in this section.

(b) Quotas of nonresident region general deer licenses are established for the regions and shall not exceed the numbers specified in this section.

Region	Deer Hunt Areas	Quotas
A	1-6	3500
B	7-9, 11-14, 21	800
C	17-20, 23, 26, 29, 31	2100
D	66, 70, 74-77	400
E	88, 92, 94, 96-98, 128, 148, 160, 171	600
F	105, 106, 110-115	950
G	135, 143-145	600
H	130, 138-140, 142, 146, 149-156	800
J	59, 61, 64, 65	900
K	132-134, 168	500
M	35, 36, 39, 40, 164	1000
R	41, 46, 47, 50-53	750
T	15	400
W	82, 100, 131	900
X	121-124, 127	300
Y	24, 25, 27, 28, 30, 32, 33, 163, 169	1800

Section 7. Hunt Area Descriptions.

Area 1. Crook. Beginning where Wyoming Highway 112 crosses the Wyoming-Montana state line; southwesterly along said highway to Wyoming Highway 24 in the town of Hulett; southerly along said highway to U.S. Highway 14; westerly along said highway to the Cabin Creek Road (Crook County Road 116); northwesterly along said road to the Oshoto Road (Crook County Road 263); westerly along said road to the "D" Road (Crook

County Road 68); northerly along said road to the Rocky Point Road in Campbell County (Campbell County Road 85); northerly along said road to the Wyoming-Montana state line; easterly along said line to Wyoming Highway 112.

Area 2. Bearlodge. Beginning where Wyoming Highway 112 crosses the Wyoming-Montana state line; easterly along said line to the Wyoming-South Dakota state line; southerly along said line to Interstate Highway 90; westerly along said Interstate Highway to the town of Sundance and U.S. Highway 14; westerly and northerly along said highway to Wyoming Highway 24; northerly along said highway to Wyoming Highway 112 at the town of Hulett; northeasterly along said highway to the Wyoming-Montana state line.

Area 3. Keyhole. Beginning at the intersection of Interstate Highway 90 and U.S. Highway 14 in the town of Sundance; westerly along Interstate Highway 90 to its intersection with the "D" Road; northerly along said road to the Oshoto Road (Crook County Road 263); easterly along said road to the Cabin Creek Road (Crook County Road 116); southerly and easterly along said road to U.S. Highway 14; easterly and southerly along said highway to Interstate Highway 90 at the town of Sundance.

Area 4. Sand Creek. Beginning where Interstate Highway 90 crosses the Wyoming-South Dakota state line; southerly along said line to U.S. Highway 85; southerly along said highway to Wyoming Highway 585; northwesterly along said highway to the town of Sundance and Interstate Highway 90; easterly along said Interstate Highway to the Wyoming-South Dakota state line.

Area 5. Inyan Kara. Beginning where Interstate Highway 90 crosses Wyoming Highway 585 in the town of Sundance; southeasterly along Wyoming Highway 585 to the Skull Creek Road (Weston County Road 14); westerly along said road to the Green Mountain Road (Weston County Road 11); northerly along said road to the Dry Creek Road (Weston County Road 13); northwesterly along said road to Wyoming Highway 116; southwesterly along said highway to U.S. Highway 16 in the town of Upton; northwesterly along said highway to Interstate Highway 90 at the town of Moorcroft; easterly along said Interstate Highway to Wyoming Highway 585 at the town of Sundance.

Area 6. Skull Creek. Beginning where U.S. Highway 85 crosses the Wyoming-South Dakota state line; southerly along said line to U.S. Highway 16; northwesterly along said highway to Wyoming Highway 116 in the town of Upton; northeasterly along said highway to the Dry Creek Road (Weston County Road 13); southerly and easterly along said road to the Green Mountain Road (Weston County Road 11); southerly along said road to the Skull Creek Road (Weston County Road 14); easterly along said road to Wyoming Highway 585; southeasterly along said highway to U.S. Highway 85; northerly along said highway to the Wyoming-South Dakota state line.

Area 7. South Osage. Beginning at the junction of U.S. Highway 16 and Wyoming Highway 450; southwesterly along Wyoming Highway 450 to Wyoming Highway 116; northerly along said highway to U.S. Highway 16 in the town of Upton; southeasterly along said highway to Wyoming Highway 450.

Area 8. Upton-Four Horse. Beginning at the junction of Wyoming Highway 116 and Wyoming Highway 450; westerly along Wyoming Highway 450 to the Keeline Road (U.S.F.S. Road 930); northwesterly along said road to Black Thunder Creek; easterly down said creek to Bacon Creek; northerly up said creek to Newel Prong; northerly up said prong to the Cheyenne River/Belle Fourche River Divide; northeasterly along said divide to the divide between Four Horse Creek and Raven Creek; northwesterly along said divide to the Belle Fourche River; northeasterly down said river to Interstate Highway 90; easterly along said highway to U.S. Highway 16; southeasterly along said highway to Wyoming Highway 116 at the town of Upton; southerly along said highway to Wyoming Highway 450.

Area 9. Blacktail Creek. Beginning where U.S. Highway 16 crosses the Wyoming-South Dakota state line; southerly along said line to the Dewey Road (Weston County Road 2); northwesterly along said road to U.S. Highway 85; southerly along said highway to the Cheyenne River Road (Weston County Road 54); westerly along said road to the Lynch Road (Weston County Road 7A); northerly along said road to Wyoming Highway 450; northeasterly along said highway to U.S. Highway 16; southeasterly along said highway to the Wyoming-South Dakota state line.

Area 10. Rochelle Hills. Beginning at the junction of Wyoming Highway 59 and Wyoming Highway 450; easterly along Wyoming Highway 450 to the Lynch Road (Weston County Road 7A); southerly along said road to the Weston-Converse County line and the Claretton Road (Converse County Road 39); southerly along said road to the Dull Center Road (Converse County Road 38); easterly along said road to the Converse-Niobrara County line and the North Lance Creek Road (Niobrara County Road 14); easterly and southerly along said road to the Slagle Road (Niobrara County Road 4); southerly along said road to the Cow Creek Road (Niobrara County Road 3); westerly along said road to the Converse-Niobrara County line and the Cow Creek Road (Converse County Road 45); southerly along said road to the Converse-Niobrara County line and the K-Field Road (Niobrara County Road 50); southerly along said road to the Converse-Niobrara County line

and the Walker Creek Road (Converse County Road 43); westerly along said road to Dry Creek; westerly up said creek to the Iberlin Ranch Road; northerly along said road to the Thunder Basin National Grassland boundary and U.S.F.S. Road 958C; northwesterly along said road to the East Bill Road (U.S.F.S. Road 958); westerly along said road to the Dull Center Road (Converse County Road 38); westerly along said road to Wyoming Highway 59; northerly along said highway to the junction of Wyoming Highway 59 and Wyoming Highway 450.

Area 11. Mule Creek. Beginning where the Dewey Road (Weston County Road 2) crosses the Wyoming-South Dakota state line; southerly along said line to U.S. Highway 18; westerly along said highway to the Old Highway 85 Road (Niobrara County Road 9); southwestly along said road to U.S. Highway 85; southerly along said highway to the Wasserburger Road (Niobrara County Road 13); westerly along said road to the North Lance Creek Road (Niobrara County Road 14); northwesterly along said road to the Niobrara-Converse county line and the Dull Center Road (Converse County Road 38); westerly along said road to the Clareton Road (Converse County Road 39); northeasterly along said road to the Converse-Weston county line and the Lynch Road (Weston County Road 7A); northerly along said road to the Cheyenne River Road (Weston County Road 54); easterly along said road to U.S. Highway 85; northerly along said highway to the Dewey Road Weston County Road 2); southeasterly along said road to the Wyoming-South Dakota state line.

Area 12. Hat Creek. Beginning where U.S. Highway 18 intersects the Wyoming-South Dakota state line; southerly along said line to the Wyoming-Nebraska state line; southerly along said line to the Hat Creek Road (Niobrara County Road 64); westerly along said road to U.S. Highway 85; northerly along said highway to Wyoming Highway 270; westerly along said highway to Wyoming Highway 272; northerly along said highway to the North Lance Creek Road (Niobrara County Road 14); northerly along said road to the Wasserburger Road (Niobrara County Road 13); easterly along said road to U.S. Highway 85; northerly along said highway to the Old Highway 85 Road (Niobrara County Road 9); northeasterly along said road to U.S. Highway 18; easterly along said highway to the Wyoming-South Dakota state line.

Area 13. Lusk. Beginning where the Hat Creek Road (Niobrara County Road 64) intersects the Wyoming-Nebraska state line; southerly along said line to U.S. Highway 20; westerly along said highway to the Twenty Mile Creek Road (Converse County Road 46) at the town of Lost Springs; northerly along said road to the Manning Road (Converse County Road 53); easterly along said road to the Twenty Mile Road (Niobrara County Road 23) at the Converse-Niobrara county line; easterly along said road to Wyoming Highway 271; easterly along said highway to Wyoming Highway 270 at the town of Lance Creek; northerly and easterly along said highway to U.S. Highway 85; southerly along said highway to the Hat Creek Road (Niobrara County Road 64); easterly along said road to the Wyoming-Nebraska state line.

Area 14. Twenty Mile. Beginning at the junction of Wyoming Highway 59 and the Dull Center Road (Converse County Road 38); easterly along said road to the East Bill Road (U.S.F.S. Road 958); easterly along said road to U.S.F.S. Road 958C; southeasterly along said road to the Iberlin Ranch Road; southerly along said road to Dry Creek; easterly down said creek to the Walker Creek Road (Converse County Road 43); easterly along said road to the Converse-Niobrara county line and the K-Field Road (Niobrara County Road 50); northerly along said road to the Converse-Niobrara county line and the Cow Creek Road (Converse County Road 45); northerly along said road to the Converse-Niobrara county line and the Cow Creek Road (Niobrara County Road 3); easterly along said road to the Slagle Road (Niobrara County Road 4); northerly along said road to the North Lance Creek Road (Niobrara County Road 14); easterly and southerly along said road to Wyoming Highway 272; southerly along said highway to Wyoming Highway 270; southwestly along said highway to the town of Lance Creek and Wyoming Highway 271; westerly along said highway to the Twenty Mile Road (Niobrara County Road 23); westerly along said road to the Converse-Niobrara county line and the Manning Road (Converse County Road 53); southwestly along said road to the Twenty Mile Creek Road (Converse County Road 46); southerly along said road to U.S. Highway 20 at the town of Lost Springs; southwestly along said highway to Interstate Highway 25; southerly along said highway to the North Platte River; westerly and northerly up said river to Wyoming Highway 59 at the town of Douglas; northerly along said highway to the Dull Center Road (Converse County Road 38).

Area 15. Southeast Wyoming. Beginning where U.S. Highway 20 intersects the Wyoming-Nebraska state line; southerly along said line to the Wyoming-Colorado state line; westerly along said line to Interstate Highway 25; northerly along said highway to U.S. Highway 26; easterly along said highway to the North Platte River; northwesterly up said river to Interstate Highway 25; northerly along said highway to U.S. Highway 20; easterly along said highway to the Wyoming-Nebraska state line.

Area 17. Northwest Gillette. Beginning where the Buffalo Creek Road intersects the Wyoming-Montana state line; southerly along said road to the Beason Road; southerly along said road to the Recluse Road; southerly along said road to U.S. Highway 14-16; southeasterly along said highway to Interstate Highway 90; westerly along said highway to the Powder River; northerly down said river to the Wyoming-Montana state line; easterly along said line to the Buffalo Creek Road.

Area 18. Campbell. Beginning where the Rocky Point Road crosses the Wyoming-Montana state line; southerly along said road to the "D" Road; southerly along said road to Interstate Highway 90; westerly along said highway to U.S. Highway 14-16; northerly along said highway to the Recluse Road; northerly along said road to the Beason Road; northerly along said road to the Buffalo Creek Road; northerly along said road to the Wyoming-Montana state line; easterly along said line to the Rocky Point Road.

Area 19. Pumpkin Buttes. Beginning at the intersection of Interstate Highway 90 and the 4-J Road at the city of Gillette; southerly along said road to Wyoming Highway 50; southwesterly along said highway to Wyoming Highway 387; southwesterly along said highway to Wyoming Highway 192; northwesterly along said highway to the Streeter Road (Johnson County Road 135); northerly along said road to the Powder River; northerly down said river to Interstate Highway 90; easterly along said highway to the intersection of Interstate Highway 90 and the 4-J Road at the city of Gillette.

Area 20. Clarkelen. Beginning at the intersection of Interstate Highway 90 and Wyoming Highway 59 at the city of Gillette; southerly along said highway to Wyoming Highway 387; southwesterly along said highway to Wyoming Highway 50; northeasterly along said highway to the 4-J Road; northeasterly along said road to Interstate Highway 90; easterly along said highway to Wyoming Highway 59.

Area 21. Thunder Basin. Beginning where Interstate Highway 90 crosses the Belle Fourche River; southwesterly up said river to the divide between Four Horse Creek and Raven Creek; southerly along said divide to the divide between the Cheyenne River and Belle Fourche River; southwesterly along said divide to Newel Prong; southerly down said prong to Bacon Creek; southerly down said creek to Black Thunder Creek; westerly up said creek to the Keeline Road (U.S.F.S. Road 930); southeasterly along said road to Wyoming Highway 450; westerly along said highway to Wyoming Highway 59; northerly along said highway to Interstate Highway 90 at the city of Gillette; easterly along said highway to the Belle Fourche River.

Area 22. Douglas. Beginning where Interstate Highway 25 crosses the North Platte River in the city of Casper; northerly along said highway to Wyoming Highway 259; northerly along said highway to the town of Midwest and Wyoming Highway 387; northeasterly along said highway to Wyoming Highway 59 at Reno Junction; southerly along said highway to the North Platte River at the town of Douglas; westerly up said river to Interstate Highway 25 in the city of Casper.

Area 23. Clearmont. Beginning where the Powder River crosses the Wyoming-Montana state line; southerly up said river to U.S. Highway 14; westerly along said highway to Interstate Highway 90; northwesterly along said highway to the Wyoming-Montana state line; easterly along said line to the Powder River.

Area 24. Sheridan. Beginning where Interstate Highway 90 crosses the Wyoming-Montana state line; southerly along said highway to the Piney Creek interchange and U.S. Highway 87; northwesterly along said highway to Wyoming Highway 193; northwesterly along said highway to South Piney Creek; westerly up said creek to the Bighorn National Forest boundary; northwesterly along said boundary to the Wyoming-Montana state line; easterly along said line to Interstate Highway 90.

Area 25. Tongue-Goose. Beginning where the Wyoming-Montana state line and the east boundary of the Bighorn National Forest intersect; southeasterly along said boundary to South Piney Creek; southwesterly up said creek to the divide along the Big Horn Mountain Range; northwesterly along said divide to U.S. Highway 14 at Granite Pass; northerly along said highway to the Hunt Mountain Road (U.S.F.S. Road 10); northwesterly along said road to U.S. Highway 14A; northwesterly along said highway to the Devils Canyon Road (U.S.F.S. Road 14); northerly along said road to the Sheep Mountain Road (U.S.F.S. Road 11); northerly along said road to the Wyoming-Montana state line; easterly along said line to the east boundary of the Bighorn National Forest.

Area 26. Ucross. Beginning where U.S. Highway 14 crosses the Powder River; southerly up said river to Interstate Highway 90; northwesterly along said highway to U.S. Highway 14; easterly along said highway to the Powder River.

Area 27. Buffalo. Beginning where Wyoming Highway 193 crosses South Piney Creek; southeasterly along said highway to U.S. Highway 87; southeasterly along said highway to Interstate Highway 90; southerly along said highway to Interstate Highway 25; southerly along said highway to the Trabling Road (Johnson County Road 13); westerly along said road to Wyoming Highway 196; southerly along said highway to the Crazy Woman Canyon Road (Johnson County Road 14); westerly along said road to the Bighorn National Forest boundary; northerly along said boundary to South Piney Creek; easterly down said creek to Wyoming Highway 193.

Area 28. Hunter Mesa. Beginning where South Piney Creek crosses the east boundary of the Bighorn National Forest; southerly and westerly along said boundary to the Gold Mine Road (U.S.F.S. Road 452); northerly along said road to the Canyon Creek Road (U.S.F.S. Road 25); northerly along said road to U.S. Highway 16 and the divide along the Big Horn Mountain Range at Powder River Pass; northerly along said divide to the head of South Piney Creek; northeasterly down said creek to the east boundary of the Bighorn National Forest.

Area 29. Johnson. Beginning where Interstate Highway 90 crosses the Powder River; southerly up said river to the Streeter Road (Johnson County Road 135); southerly along said road to Wyoming Highway 192; southeasterly along said highway to the West Sussex Oil Field Road at the town of Linch; westerly along said road to old U.S. Highway 87; west from the junction of the West Sussex Oil Field Road and old U.S. Highway 87 to Interstate Highway 25; northerly along said highway to Interstate Highway 90; southeasterly along said highway to the Powder River.

Area 30. Upper Powder River. Beginning at the junction of the Trabling Road (Johnson County Road 13) and Interstate Highway 25; southerly along Interstate Highway 25 to the point east of the U.S. Highway 196-Mesa Road (Johnson County Road 115) junction; west to the U.S. Highway 196-Mesa Road junction; southwesterly along the Mesa Road to the Mayoworth Road (Johnson County Road 266) at the town of Mayoworth; westerly along said road to the Slip Road (Johnson County Road 67); westerly along said road to the Hazelton Road (Johnson County Road 3); northerly along said road to the Gold Mine Road (U.S.F.S. Road 452); northwesterly along said road to the Bighorn National Forest boundary; easterly and northerly along said boundary to the Crazy Woman Canyon Road (Johnson County Road 14); easterly along said road to Wyoming Highway 196; northerly along said highway to the Trabling Road; easterly along said road to Interstate Highway 25.

Area 31. Salt Creek. Beginning at the junction of the West Sussex Oil Field Road and Wyoming Highway 192 at the town of Linch; southeasterly along said highway to Wyoming Highway 387; southwesterly along said highway to Interstate Highway 25; northwesterly along said highway to the point on Interstate Highway 25 due west of the junction of old U.S. Highway 87 and the West Sussex Oil Field Road; east from Interstate Highway 25 to the junction of old U.S. Highway 87 and the West Sussex Oil Field Road; easterly along said road to Wyoming Highway 192 at the town of Linch.

Area 32. Beartrap Creek. Beginning where the Slip Road (Johnson County Road 67) crosses Arch Creek west of the town of Mayoworth; southerly down said creek to Beartrap Creek; southerly down said creek to the North Fork of the Red Fork of the Powder River; southeasterly down said river to the Ken Graves Ranch Road; southerly down said road to the Barnum Road (Johnson County Road 78); southerly along said road to the Barnum Mountain Road; westerly along said road to the Hazelton Road (Washakie County Road 81-Johnson County Road 3); northerly along said road to the Slip Road; southeasterly along said road to Arch Creek.

Area 33. Red Fork. Beginning at the town of Kaycee and Interstate Highway 25; southeasterly along said highway to the South Fork of the Powder River; southerly up said river to Willow Creek; southwesterly up said creek to the Lone Bear Road (Natrona County Road 112); northerly along said road to the Willow Creek Road (Natrona County Road 111); southwesterly along said road to the 33 Mile Road (Natrona County Road 110); northwesterly along said road to Buffalo Creek; northerly down said creek to the Middle Fork of the Powder River; westerly up said river to the Outlaw Cave Access Road; northerly along said road to the Barnum Road (Johnson County Road 78) at the town of Barnum; northerly along said road to the Ken Graves Ranch Road; northerly along said road to the North Fork of the Red Fork of the Powder River at the Ken Graves Ranch; northwesterly up said river to Beartrap Creek; northwesterly up said creek to Arch Creek; northerly up said creek to the Slip Road (Johnson County Road 67); easterly along said road to the Mayoworth Road (Johnson County Road 266); easterly along said road to the Mesa Road (Johnson County Road 115) at Mayoworth; northeasterly along said road to Wyoming Highway 196; due east from the junction of the Mesa Road and Wyoming Highway 196 to the Interstate Highway 25; southerly along said highway to the town of Kaycee.

Area 34. Natrona. Beginning at the intersection of Interstate Highway 25 and U.S. Highway 20-26 in the city of Casper, westerly along U. S. Highway 20-26 to Natrona County Road 104 at Waltman; northerly along said road to Natrona County Road 103; northwesterly along said road to Natrona County Road 102; northerly along said road to Natrona County Road 101; northeasterly along said road to Badwater Creek; northeasterly along said creek to the divide between Badwater Creek, Deep Creek, and Buffalo Creek; northeasterly along said divide to the divide between the Middle Fork and North Fork of Buffalo Creek; easterly along said divide to the North Fork of Buffalo Creek; northeasterly along said creek to Natrona County Road 109; northeasterly along said road to Washakie County Road 6215; northeasterly along said road to the 33-Mile Road (Natrona County Road 110) at Kidd Flat; southeasterly along said road to Natrona County Road 113; easterly along said road to Natrona County Road 114; northeasterly along said road to Natrona County Road 115; easterly along said road to Wyoming Highway 387; easterly along said highway to Wyoming Highway 259 in the town of Midwest; southerly along said highway to Interstate Highway 25; southerly along said highway to U.S. Highway 20-26 in the city of Casper.

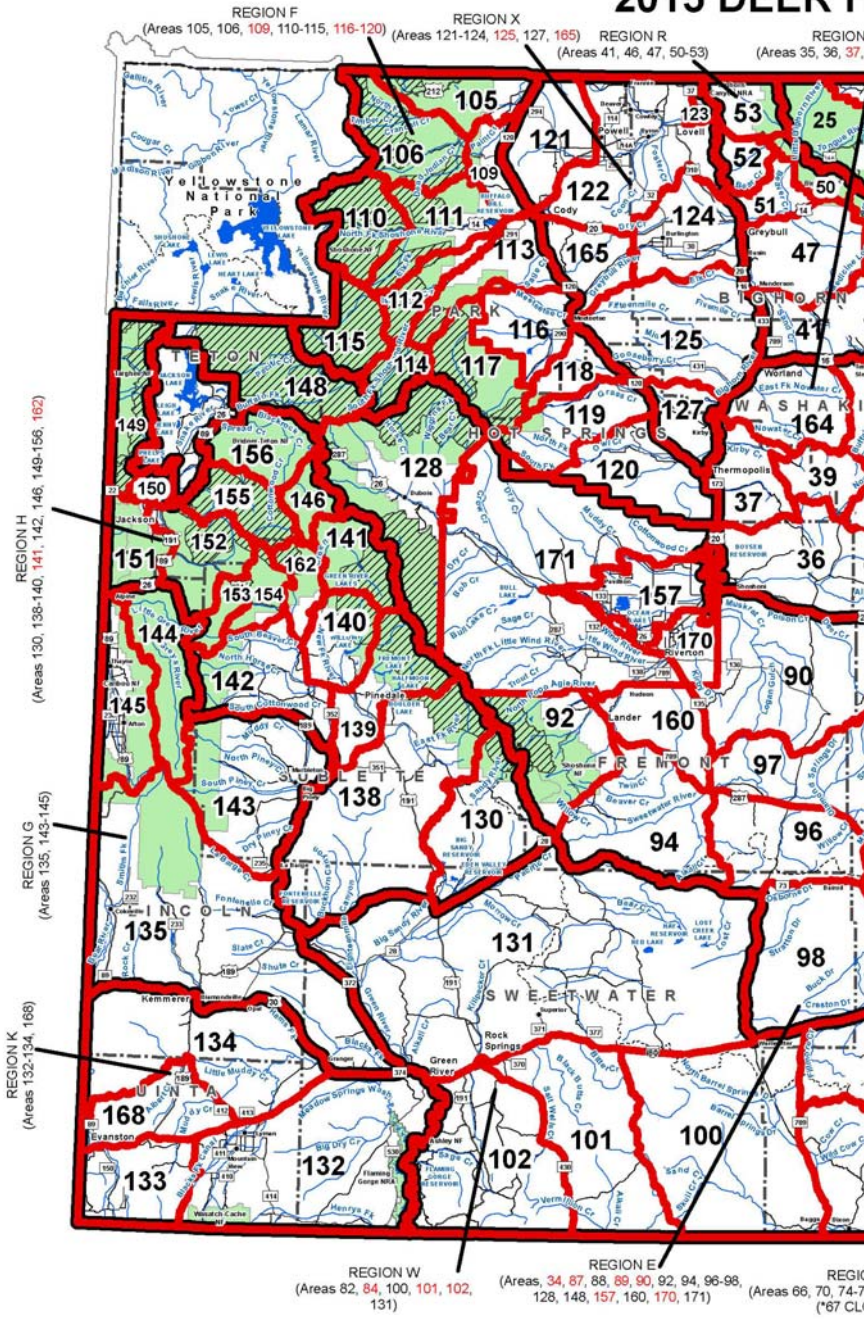
Area 35. Upper Nowood. Beginning at Cottonwood Pass and the Nowood Road; northeasterly along said road to Deep Creek; up said creek to Lost Creek; up said creek to the Cherry Creek Hill Stock Drive Road; northeasterly along said road to the Hazelton Road; southerly along said road to Washakie County Road 6215 at Kidd Flat; southwestly along said road to Natrona County Road 109; southwestly along said road to the North Fork of Buffalo Creek; southwestly along said creek to the divide between the Middle Fork and North Fork of Buffalo Creek; westerly along said divide to the divide between Badwater Creek, Deep Creek and Buffalo Creek; southwestly along said divide to the Bighorn Trail; westerly along said trail to the Oakie Road (Natrona County Road 101); westerly along said road to Sioux Pass and the Devil's Slide Road; westerly along said road to the divide between Nowood Creek and Badwater Creek; southwestly then northwesterly along said divide to the Nowood Road at Cottonwood Pass.

Area 36. Badwater. Beginning at the town of Shoshoni and U.S. Highway 20-26; westerly along said highway to the east shoreline of Boysen Reservoir; northerly along said shoreline to Boysen Dam and the Wind River; northerly down said river to Gold Creek (excluding Indian tribal trust lands immediately north of U.S. Highway 20-26 near Boysen Reservoir and northeast of Boysen Dam); easterly up Gold Creek to the divide between Buffalo Creek and Badwater Creek on Copper Mountain; easterly along said divide to West Bridger Creek; easterly down said creek to the Kirby Creek Road (Hot Springs County Road 7); northerly along said road to Little V-H Draw; northeasterly up said draw to the Packsaddle Road; southerly along said road to the Bridger Creek Road; northeasterly along said road to the Pine Creek Road at the Gardner Summer Ranch; easterly up said road to the Seaman Ranch Road; easterly, southerly, then easterly along said road to the divide between Nowood Creek and Badwater Creek at Cottonwood Pass; southeasterly then northeasterly along said divide to the Devil's Slide Road; easterly along said road to Sioux Pass and the Oakie Trail (Natrona County Road 101); easterly along said trail to the Big Horn Trail; easterly along said trail to the divide between Badwater Creek, Deep Creek, and the Middle Fork of Buffalo Creek; southwestly down Badwater Creek to Natrona County Road 101; southwestly along said road to Natrona County Road 102; southerly along said road to Natrona County Road 103; southeasterly along said road to Natrona County Road 104; southerly along said road to Waltman and U.S. Highway 20-26; westerly along said highway to the town of Shoshoni.

Area 37. Copper Mountain. Beginning at the confluence of the Big Horn River and Walter's Draw; easterly up said draw to the divide between Nowater Creek and Kirby Creek; easterly along said divide to the Murphy Dome-Mud Creek Road (B.L.M. Road 1409); southerly along said road to Wyoming Highway 172 (Black Mountain Road); westerly along said highway to Kirby Creek Road (Hot Springs County Road 7); southeasterly along said road to West Bridger Creek; westerly up said creek to the divide between Buffalo Creek and Badwater Creek; westerly along said divide to the head of Gold Creek; westerly down said creek to the east boundary of the Wind River Reservation; north and west along said boundary to the Big Horn River; northerly down said river to Walter's Draw.

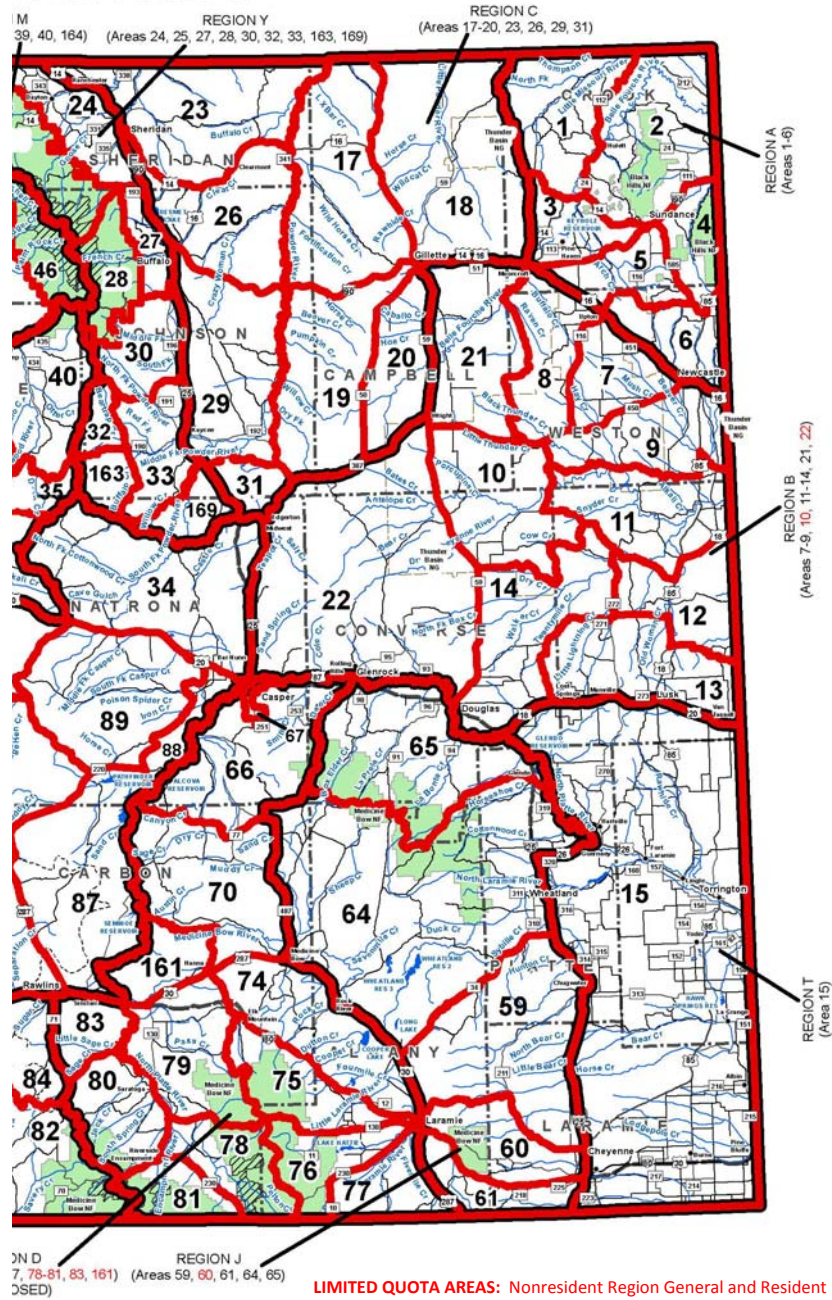
Area 39. Bates Creek. Beginning at the intersection of the Kirby Creek Road (Hot Springs County Road 7) and Wyoming Highway 172 (Black Mountain Road); easterly along said highway to Murphy Dome-Mud Creek Road (B.L.M. Road 1409); northeasterly along said road to the Nowater Stock Drive Road (B.L.M. Road 1404); easterly along said road to the Upper Nowood Road; southerly along said road to the Seaman Ranch Road (Lysite Mountain Road) at Cottonwood Pass; westerly then northerly along said road to the Pine Creek Road; westerly along said road to the Bridger Creek Road at the Gardner Summer Ranch; southwestly along said road to the Packsaddle Road; northerly along said road to the head of Little V-H draw; southwestly down said draw to the Kirby Creek Road (Hot Springs County Road 7); northerly along said road to Wyoming Highway 172.

2015 DEER H



THIS MAP IS FOR GENERAL REFERENCE ONLY.
 Please use the written boundary descriptions in this regulation for detailed hunt area boundary information.
 Scan QR code to access hunt area map on Department website.

HUNT AREAS



Area 40. Buffalo Creek. Beginning at the intersection of U.S. Highway 16 and the Bluebank Road (B.L.M. Road 1411); northeasterly along said highway to the Canyon Creek Road (U.S.F.S. Road 25); southerly along said road to the Gold Mine Road (U.S.F.S. Road 452); southerly along said road to the Hazelton Road (Big Horn Divide Road); southerly along said road to the Cherry Creek Hill Stock Drive Road; westerly along said road to Lost Creek; northwesterly down said creek to Deep Creek; northerly down said creek to the Upper Nowood Road; southwestly along said road to the Nowater Stock Drive (B.L.M. Road 1404); northwesterly along said road to the Bluebank Road (B.L.M. Road 1411); northerly along said road to the intersection with U.S. Highway 16.

Area 41. Lower Nowood. Beginning at the intersection of U.S. Highway 16-20 and Wyoming Highway 31 near the town of Manderson; easterly along Highway 31 to the Alkali Road (B.L.M. Road 1111) near the town of Hyattville; northerly along said road to the Cold Springs Road (Big Horn County Road 268; B.L.M./U.S.F.S. Road 344); northeasterly along said road to the Bighorn National Forest boundary; southeasterly along said boundary to U.S. Highway 16; westerly along said highway to U.S. Highway 20 (Wyoming Highway 789); southerly along said highway to its junction with the Big Horn Canal three-quarters (3/4) of a mile south of the town of Worland; northerly on said canal to U.S. Highway 16-20; easterly along said highway to Wyoming Highway 31.

Area 46. Cloud Peak. Beginning at Granite Pass on U.S. Highway 14 and the divide along the Bighorn Mountain range; southeasterly along said divide to the U.S. Highway 16 at Powder River Pass; westerly along said highway to the Bighorn National Forest Boundary; northerly along said boundary to the Alkali Road (U.S.F.S. Road 338); easterly along said road to the Shell Ranger Station-Paint Rock Lakes Road (U.S.F.S. Road 17); northwesterly along said road to U.S. Highway 14; northerly along said highway to Granite Pass.

Area 47. Webber Canyon. Beginning at the junction of U.S. Highway 16-20 and U.S. Highway 14 in the town of Greybull; easterly along U.S. Highway 14 to the Paint Rock Lakes Road (U.S.F.S. Road 17); southeasterly along said road to the Alkali Road (U.S.F.S. Road 338) westerly along said road to the Bighorn National Forest boundary; southeasterly along said boundary to the Cold Springs Road (Big Horn County Road 268; B.L.M./U.S.F.S. Road 344); southwestly along said road to Wyoming Highway 31; westerly along said highway to U.S. Highway 16-20; northerly along said highway to U.S. Highway 14 in the town of Greybull.

Area 50. Upper Shell-Beaver Creek. Beginning at the Bighorn National Forest boundary and U.S. Highway 14A; easterly along said highway to the Hunt Mountain Road (U.S.F.S. Road 10); southwestly along said road to U.S. Highway 14; southerly then westerly along said highway to the Bighorn National Forest boundary; northwesterly along said boundary to U.S. Highway 14A.

Area 51. Beaver Creek. Beginning at the Big Horn River in the town of Greybull; northerly down said river to Bear Creek; northeasterly up said creek to the Bighorn National Forest boundary; southeasterly along said boundary to U.S. Highway 14; westerly along said highway to the Big Horn River.

Area 52. Crystal Creek. Beginning at the Big Horn River and U.S. Highway 14A nine (9) miles east of the town of Lovell; easterly along said highway to the Bighorn National Forest boundary; southeasterly along said boundary to Bear Creek; southwestly down said creek to the Big Horn River; northerly down said river to U.S. Highway 14A.

Area 53. Devils Canyon. Beginning where U.S. Highway 14A crosses the Big Horn River; northerly down said river to the Wyoming-Montana state line; easterly along said line to the Sheep Mountain Road (U.S.F.S. Road 11); southerly along said road to the Devils Canyon Road (U.S.F.S. Road 14); southerly along said road to U.S. Highway 14A; westerly along said highway to the Big Horn River.

Area 59. South Laramie Mountains. Beginning at the junction of Wyoming Highway 34 and Interstate Highway 25; southerly along said Interstate Highway to Wyoming Highway 211 near the city of Cheyenne; northwesterly along said highway to the Fisher Canyon-Rogers Canyon Road (Laramie County Road 228-1-Albany County Road 17) at Horse Creek Station; westerly along said road to U.S. Highway 30; northerly along said highway to Wyoming Highway 34; northeasterly along said highway to Interstate Highway 25.

Area 60. Pole Mountain. Beginning in the city of Laramie and the Rogers Canyon-Ninth Street Road (Albany County Road 17-Laramie County Road 228); northeasterly along said road to Wyoming Highway 211 (Horse Creek-Chugwater Road); southeasterly along said highway to Interstate Highway 25; southerly along said highway to Interstate Highway 80; westerly along said highway to the city of Laramie.

Area 61. Harriman. Beginning at the city of Laramie and Interstate Highway 80; southeasterly along said highway to Interstate Highway 25 near the city of Cheyenne; southerly along said highway to the Wyoming-Colorado state line; west along said line to U.S. Highway 287; northerly along said highway to Interstate Highway 80.

Area 64. Laramie Peak. Beginning at the junction of Interstate Highway 25 and Wyoming Highway 34; southwestward along Highway 34 to U.S. Highway 30; northwestward along said highway to the junction with Wyoming Highway 487 at the town of Medicine Bow; northward along said highway to the Lone Tree Road (B.L.M. Road 3141); northward along said road to the Spring Creek Road; easterly along said road to the Bates Creek Road (Natrona County Road 402); northeasterly along said road to the Squaw Springs Trail Road; northeasterly along said road to U.S.F.S. Road 660; southeasterly along said road to the Cold Springs Road (Converse County Road 24); easterly along said road to the divide between the Little Medicine Bow River and LaPrele Creek; easterly along said divide to the divide between Corduroy Creek and Rocky Ford Creek; easterly along said divide to the Fetterman Road (Albany County Road 61); southerly along said road to U.S.F.S. Road 658; easterly along said road to South Fork Creek (a tributary to LaBonte Creek); southerly up said creek to the divide between Horseshoe Creek and the North Laramie River; southerly and easterly along said divide to the Esterbrook Road (Albany County Road 710-Converse County Road 5 and 7-U.S.F.S. Road 653); northeasterly along said road to the Glendo-Esterbrook Road (Ridge Road-Converse County Road 6-Platte County Road 135); easterly along said road to the Glendo Park Road (Platte County Road 17) at the town of Glendo; easterly along said road to the North Platte River; southeasterly down said river to U.S. Highway 26; westerly along said highway to Interstate Highway 25; southerly along said highway to Wyoming Highway 34.

Area 65. South Converse. Beginning at the confluence of Deer Creek and the North Platte River at the town of Glenrock; easterly and southerly down said river to the Glendo Reservoir Dam and the Glendo Park Road (Platte County Road 17); westerly along said road to the town of Glendo and the Glendo-Esterbrook Road (Ridge Road; Platte County Road 135-Converse County Road 6); westerly along said road to the Esterbrook Road (Converse County Road 5 and 7-U.S.F.S. Road 653-Albany County Road 710); southwestward along said road to the divide between Horseshoe Creek and the North Laramie River; westerly and northerly along said divide to the head of South Fork Creek, a tributary of LaBonte Creek; northeasterly along said creek to U.S.F.S. Road 658; westerly along said road to the Fetterman Road (Albany County Road 61); northerly along said road to the divide between Corduroy Creek and Rocky Ford Creek; westerly along said divide to the divide between LaPrele Creek and the Little Medicine Bow River; westerly along said divide to the Cold Springs Road (Converse County Road 24); southwestward along said road to U.S.F.S. Road 660; northwestward along said road to Curry Creek; northwestward down said creek to Deer Creek; northerly down said creek to the North Platte River at the town of Glenrock.

Area 66. Bates Hole-Hat Six. Beginning at the confluence of Deer Creek and the North Platte River at the town of Glenrock; southerly along said creek to Curry Creek; southeasterly up said creek to U.S.F.S. Road 660; northwestward along said road to its termination at the Squaw Springs Trail Road; southwestward along said road to the Bates Creek Road (Natrona County Road 402); southwestward along said road to the Spring Creek Road; westerly along said road to the Lone Tree Road (B.L.M. Road 3141); southerly along said road to the Shirley Ridge Road (Carbon County Road 2); southwestward along said road to Wyoming Highway 77; southerly along said highway to the Chalk Mountain Road (B.L.M. Road 3129); westerly and northerly along said road to the Dry Creek Road (Carbon County Road 103); northwestward along said road to the south fork of Canyon Creek; westerly and northerly down said fork to Canyon Creek; westerly down said creek to Pathfinder Reservoir and the North Platte River; northerly and easterly down said river to Wolf Creek; southerly up said creek to its head; southerly one and one-eighth (1-1/8) miles to the Casper Mountain area boundary marker; due east two and one-quarter (2-1/4) miles to the west boundary of Star Wallow; southerly along said boundary one and one-half (1-1/2) miles to the switchback of the Circle Drive Road (Natrona County Road 505); southerly along said road to the head of the Clear Fork of Muddy Creek; easterly down said fork to the Casper Mountain area boundary marker; north two (2) miles to the southeast corner of Crimson Dawn Park; northerly and westerly along the east and north boundary of said park to the north entrance road; northerly along said road to the East End Road (Natrona County Road 506); northeasterly along said road to the head of the East Fork of Elkhorn Creek; northerly down said creek to the lower timberline on Casper Mountain; westerly along said timberline to the Casper Mountain Road (Wyoming Highway 251); northerly along said road to the Casper city limits; easterly and northerly along said city limits to Interstate Highway 25; easterly along said highway to the Cole Creek Road (Wyoming Highway 256); northerly along said highway to the North Platte River; easterly down said river to Deer Creek at the town of Glenrock.

Area 67. Casper Mountain. Beginning where Wolf Creek enters the North Platte River; easterly down said river to Cole Creek Road (Wyoming Highway 256); southerly along said highway to Interstate Highway 25; westerly along said highway to the Casper city limits; southerly and westerly along said city limits to Casper Mountain Road (Wyoming Highway 251); southerly along said road to the lower timberline on Casper Mountain; easterly along said timberline to the East Fork of Elkhorn Creek; southerly up said creek to the East End Road (Natrona County Road 506); southwestward along said road to the north entrance road

to Crimson Dawn Park; southerly along said road to the Crimson Dawn Park boundary; easterly and southerly along said boundary to the southeast corner of the park; southerly to the Clear Fork of Muddy Creek and the Casper Mountain area boundary marker; southwesterly up said creek to the Circle Drive Road (Natrona County Road 505); northerly along said road to the switchback; northerly one and one-half (1-1/2) miles along the west boundary of Star Wallow; west two and one-fourth (2-1/4) miles to the Casper Mountain area boundary marker; northerly to the head of Wolf Creek; northerly down said creek to the North Platte River.

Area 70. Shirley Mountain. Beginning where Wyoming Highway 487 intersects U.S. Highway 30 at the town of Medicine Bow; westerly along U.S. Highway 30 to Wyoming Highway 72; northerly along said highway to the town of Hanna and the Hanna-Leo Road (Carbon County Road 291); northerly along said road to the Medicine Bow River; westerly down said river to Seminoe Reservoir and the North Platte River; northerly down said river to where Canyon Creek enters Pathfinder Reservoir; easterly up said creek to the south fork of Canyon Creek; easterly and southerly up said fork to the Dry Creek Road (Carbon County Road 103); southeasterly along said road to the Chalk Mountain Road (B.L.M. Road 3129); easterly and southerly along said road to Wyoming Highway 77; northerly along said highway to the Shirley Ridge Road (Carbon County Road 2); northeasterly along said road to Wyoming Highway 487; southerly along said highway to the intersection with U.S. Highway 30 at the town of Medicine Bow.

Area 74. Kyle. Beginning where U.S. Highway 30 intersects Wyoming Highway 72; southeasterly along said highway to the city of Laramie and Interstate Highway 80; northwesterly along said highway to Wyoming Highway 72; northerly along said highway to U.S. Highway 30.

Area 75. Four Mile. Beginning at the city of Laramie and Wyoming Highway 130; westerly along said highway to the divide between the Laramie River and the North Platte River; northerly along said divide to Medicine Bow Peak and the divide between the Medicine Bow River and Brush Creek; northwesterly along said divide to U.S.F.S. Road 103; northwesterly along said road to the North Brush Creek Road (U.S.F.S. Road 100); northerly along said road to the Sand Lake Road (U.S.F.S. Road 101); northwesterly along said road to the Cedar Pass Road (U.S.F.S. Road 261); southwesterly along said road to U.S.F.S. Road 115; northerly along said road to the Pass Creek Basin Road; northerly along said road to the Pass Creek Road (Carbon County Road 404); northerly along said road to Wyoming Highway 72; northwesterly along said highway to Interstate Highway 80 to the west Elk Mountain interchange; southeasterly along said highway to Wyoming Highway 130.

Area 76. Sheep Mountain. Beginning at the city of Laramie and Wyoming Highway 230; southwesterly along said highway to Wyoming Highway 10 at Woods Landing; southerly along said highway to the Wyoming-Colorado state line; west along said line to Wyoming Highway 230; northeasterly along said highway to U.S.F.S. Road 512; northwesterly along said road to U.S.F.S. Road 543; northerly along said road to Douglas Creek at Keystone; northerly up said creek to the divide between the Laramie River and the North Platte River; northerly along said divide to Wyoming Highway 130; easterly along said highway to Wyoming Highway 230.

Area 77. Boulder Ridge. Beginning at the city of Laramie and U.S. Highway 287; southerly along said highway to the Wyoming-Colorado state line; westerly along said line to Wyoming Highway 10; northerly along said highway to Wyoming Highway 230 at Woods Landing; northeasterly along said highway to U.S. Highway 287.

Area 78. French Creek. Beginning where Wyoming Highway 130 crosses the divide between the Laramie River and the North Platte River; southerly along said divide to Douglas Creek; southerly down said creek to U.S.F.S. Road 543 at Keystone; southerly along said road to U.S.F.S. Road 512; southeasterly along said road to Wyoming Highway 230; southwesterly along said highway to the Wyoming-Colorado state line; westerly along said line to Wyoming Highway 230; northwesterly along said highway to Wyoming Highway 130; easterly along said highway to the divide between the Laramie River and the North Platte River.

Area 79. Kennaday Peak. Beginning where Interstate Highway 80 crosses the North Platte River; easterly along said highway to U.S. Highway 30; easterly along said highway to Wyoming Highway 72; southerly along said highway to the Pass Creek Road (Carbon County Road 404); southerly along said road to the Pass Creek Basin Road; southerly along said road to U.S.F.S. Road 115; southerly along said road to the Cedar Pass Road (U.S.F.S. Road 261); northeasterly along said road to the Sand Lake Road (U.S.F.S. Road 101); southeasterly along said road to the North Brush Creek Road (U.S.F.S. Road 100); southerly along said road to U.S.F.S. Road 103; southeasterly along said road to the divide between Brush Creek and the Medicine Bow River; southeasterly along said divide to Medicine Bow Peak and the divide between the Laramie River and the North Platte River; southerly along said divide to Wyoming Highway 130; westerly and northerly along said highway to the North Platte River in the town of Saratoga; northerly down said river to Interstate Highway 80.

Area 80. Spring Creek. Beginning at the Continental Divide on Wyoming Highway 70; northerly along said divide to the Rawlins-Sandstone Road; northerly along said road to Sage Creek; northeasterly down said creek to the North Platte River; southerly up said river to the town of Saratoga and Wyoming Highway 130; southerly along said highway to Wyoming Highway 230; southerly along said highway to Wyoming Highway 70 at the town of Riverside; southwesterly along said highway to the Continental Divide.

Area 81. Blackhall. Beginning at the Wyoming-Colorado state line and Wyoming Highway 230; westerly along said line to the Continental Divide; northerly along said divide to Wyoming Highway 70; northeasterly along said highway to Wyoming Highway 230 at the town of Riverside; easterly and southeasterly along said highway to the Wyoming-Colorado state line.

Area 82. Baggs. Beginning at the junction of Wyoming Highway 789 and the Wyoming-Colorado state line; northerly along said highway to Muddy Creek north of Dad; easterly up said creek to the Muddy Creek Road (B.L.M. Road 3306); easterly along said road to Miller Hill Road (B.L.M. Road 3328); southeasterly along said road to McCarty Canyon Road (Carbon County Road 503); northeasterly along said road to Sage Creek Road (Carbon County Road 401); southerly along said road to the Continental Divide at Middlewood Hill; southerly along said divide to the Wyoming-Colorado state line; westerly along said line to Wyoming Highway 789.

Area 83. Bolten Rim. Beginning where Wyoming Highway 71 crosses Interstate Highway 80 at the city of Rawlins; easterly along said Interstate to the North Platte River; southerly up said river to Sage Creek; southwesterly up said creek to the Sage Creek Road (Carbon County Road 401); northerly along said road to Wyoming Highway 71; northerly along said highway to Interstate Highway 80.

Area 84. Atlantic Rim. Beginning where Wyoming Highway 71 crosses Interstate Highway 80 at the city of Rawlins; southerly along said highway to the Sage Creek Road (Carbon County Road 401); southerly along said road to the McCarty Canyon Road (Carbon County Road 503); southwesterly along said road to the Miller Hill Road (B.L.M. Road 3328); northwesterly along said road to the Muddy Creek Road (B.L.M. Road 3306); westerly along said road to Muddy Creek; westerly down said creek to Wyoming Highway 789; northerly along said highway to Interstate Highway 80; easterly along said highway to Wyoming Highway 71.

Area 87. Ferris. Beginning at the junction of U.S. Highway 287 and Interstate Highway 80 at the city of Rawlins; northerly along said highway to Muddy Gap Junction and Wyoming Highway 220; northeasterly along said highway to the Pathfinder Road (Natrona County Road 409); southerly along said road to the Pathfinder Dam service road; southerly along said road to the North Platte River at Pathfinder Dam; southerly up said river to Interstate Highway 80; westerly along said Interstate to U.S. Highway 287.

Area 88. Kendrick. Beginning where U.S. Highway 20-26 crosses the North Platte River in the city of Casper; southwesterly up said river to the Pathfinder Dam; northerly along the Pathfinder Dam service road to Wyoming Highway 220; westerly along said highway to the Rattlesnake Divide between Eagle Creek and Fish Creek; northerly along said divide to the Oregon Trail Road (Natrona County Road 319) at the top of Ryan Hill (Prospect Hill); northeasterly along said road to the Kendrick Canal at the Iron Creek Oil Field; northerly along said canal to U.S. Highway 20-26; easterly along said highway to the North Platte River.

Area 89. Rattlesnake. Beginning where the Gas Hills Road (Natrona County Road 212) intersects U.S. Highway 20-26 at the town of Waltman; easterly along said highway to the Kendrick Canal; southerly along said canal to the Oregon Trail Road (Natrona County Road 319) at the Iron Creek Oil Field; southwesterly along said road to the Rattlesnake Divide at Ryan Hill (Prospect Hill); southerly along said divide between Eagle Creek and Fish Creek to Wyoming Highway 220; westerly along said highway to the Dry Creek Road (Natrona County Road 321); northwesterly along said road to the Gas Hills Road (Natrona County Road 212); northeasterly along said road to U.S. Highway 20-26 at the town of Waltman.

Area 90. Muskrat. Beginning where U.S. Highway 26 intersects the Wind River Reservation boundary; easterly along said highway to the town of Waltman and the Gas Hills Road (Natrona County Road 212); southwesterly along said road to the Dry Creek Road (Natrona County Road 321); southeasterly along said road to the divide between Deer Creek and Dry Creek; southwesterly along said divide to Beaver Rim; southwesterly along said rim to the Ore Road; southerly along said road to the Beaver Rim Road (B.L.M. Road 2401); westerly along said road to the Cedar Rim Draw Road (B.L.M. Road 2301); southwesterly along said road to Wyoming Highway 135 (Sand Draw Road); northerly along said highway to the south boundary of the Wind River Reservation; easterly and northerly along said boundary to its intersection with U.S. Highway 26.

Area 92. South Wind River. Beginning where U.S. Highway 287 crosses the south boundary of the Wind River Reservation; southeasterly along said highway to Wyoming Highway 28; southwesterly along said highway to the Sweetwater River;

northwesterly along said river to the divide between the Sweetwater River and Popo Agie River drainages at Sweetwater Gap; westerly along said divide to the Continental Divide on Mt. Nystrom; northwesterly along said divide to the south boundary of the Wind River Reservation; easterly along said boundary to U.S. Highway 287.

Area 94. Twin Creek. Beginning where Wyoming Highway 28 intersects U.S. Highway 287 south of the city of Lander; southeasterly along U.S. Highway 287 to the Bison Basin Road (Fremont County Road 281 and B.L.M. Road 3221); southerly along said road to the Cyclone Rim Road (B.L.M. Road 3216); westerly along said road to the Red Creek Road (B.L.M. Road 3219); northwesterly along said road to the Sand Creek Road; northwesterly along said road to the Continental Divide Road; westerly along said road to the Oregon Buttes Road (Fremont County Road 445); northerly along said road to Wyoming Highway 28; northeasterly along said highway to U.S. Highway 287.

Area 96. Green Mountain. Beginning at the junction of U.S. Highway 287 and Wyoming Highway 73; westerly along said highway to the Bairoil Road (Sweetwater County Road 22); westerly along said road to the Wamsutter-Crooks Gap Road (Sweetwater County Road 23); southerly along said road to the Osborne Road (B.L.M. Road 3212); westerly along said road to the Hadsell Road (B.L.M. Road 3217); westerly along said road to the Bison Basin Road (Fremont County Road 281 and B.L.M. Road 3221); northerly along said road to U.S. Highway 287; southeasterly along said highway to Wyoming Highway 73.

Area 97. Sweetwater Rocks. Beginning at the junction of Wyoming Highway 220 and U.S. Highway 287; westerly along said highway to Wyoming Highway 135; northerly along said highway to the Cedar Rim Draw Road (B.L.M. Road 2301); northeasterly along said road to the Beaver Rim Road (B.L.M. Road 2401); easterly along said road to the Ore Road (Fremont County Road 5) at Beaver Rim; northeasterly along said road to the divide between Deer Creek and Dry Creek; northeasterly along said divide to the Dry Creek Road (Natrona County Road 321); southeasterly along said road to Wyoming Highway 220; southwesterly along said highway to U.S. Highway 287.

Area 98. Chain Lakes. Beginning at the junction of U.S. Highway 287 and Interstate Highway 80 at the city of Rawlins; westerly along said Interstate to the Wamsutter-Crooks Gap Road (Sweetwater County Road 23); northerly along said road to the Bairoil Road (Sweetwater County Road 22); easterly along said road to Wyoming Highway 73; easterly along said highway to U.S. Highway 287; southerly along said highway to Interstate Highway 80.

Area 100. South Wamsutter. Beginning where Wyoming Highway 789 crosses the Wyoming-Colorado state line; west along said line to the Cow Creek-Powder Wash Road north of Powder Wash, Colorado; northwesterly along said road to the Bitter Creek Road (Sweetwater County Road 19); northwesterly along said road to Interstate Highway 80; easterly along said highway to Wyoming Highway 789 at Creston Junction; southerly along said highway to the Wyoming-Colorado state line.

Area 101. Black Butte. Beginning at the junction of Wyoming Highway 430 and the Wyoming-Colorado state line; northwesterly along said highway to Interstate Highway 80 in the town of Rock Springs; easterly along said interstate to the Bitter Creek Road (Sweetwater County Road 19); southeasterly along said road to Carson Springs Junction and the Cow Creek-Powder Wash Road; southeasterly along said road to the Wyoming-Colorado state line; westerly along said line to Wyoming Highway 430.

Area 102. Aspen Mountain. Beginning where Interstate Highway 80 crosses the Green River; easterly along said highway to the town of Rock Springs and Wyoming Highway 430; southeasterly along said highway to the Wyoming-Colorado state line; westerly along said line to the Flaming Gorge Reservoir; northerly along the east shore of said reservoir to the Green River; up the east bank of said river to Interstate Highway 80.

Area 105. Beartooth. All of the area within Wyoming north of Clark's Fork River and west of Wyoming Highway 120.

Area 106. Crandall-Sunlight. All of the drainage of Soda Butte Creek outside of Yellowstone National Park; all of the south drainage of Clark's Fork River down to and including Dead Indian Creek drainage.

Area 109. Bald Ridge. All of the drainage of Pat O'Hara Creek, Paint Creek, Trail Creek, Cottonwood Creek, Dry Creek, Newmeyer Creek and Dead Indian Gulch north of the North Fork of the Shoshone River and west of Wyoming Highway 120.

Area 110. Grinnell. All of the north and west drainage of the North Fork of the Shoshone River down to and including the drainage of Clearwater Creek; all of the south drainage of the North Fork of the Shoshone River down to the drainage of Elk Fork Creek.

Area 111. Elk Fork. All of the north drainage of the North Fork of the Shoshone River below the drainage of Clearwater Creek; all of the south drainage of the North Fork of the Shoshone River below and including Elk Fork Creek.

Area 112. Ishawooa. All of the north and west drainage of the South Fork of the Shoshone River up to the drainage of Fall Creek.

Area 113. Boulder. All of the east and south drainage of the South Fork of the Shoshone River up to the drainage of Needle Creek; all of the drainage of Sage Creek and Dry Creek west of Wyoming Highway 120; all of the drainage of Sulphur Creek.

Area 114. Wall Mountain. All of the drainage of the South Fork of the Shoshone River above and including the drainage of Fall Creek on the west side of the South Fork of the Shoshone River, and above and including the drainage of Needle Creek on the east side of the South Fork of the Shoshone River.

Area 115. Thorofare. All of the drainage of the Yellowstone River upstream from Yellowstone Lake and outside of Yellowstone National Park.

Area 116. Meeteetse. All of the Greybull and Wood River drainages off national forest west of Wyoming Highway 120.

Area 117. Franc's Peak. All of the Greybull and Wood River drainages on national forest.

Area 118. Upper Gooseberry Creek. All of the drainages of Gooseberry Creek and Little Buffalo Creek located west of Wyoming Highway 120.

Area 119. Anchor. Beginning where the divide between Gooseberry Creek and Grass Creek crosses Wyoming Highway 120; southerly along said highway to the Upper Cottonwood Creek Road (Hot Springs County Road 10); westerly then southerly along said road to the Lake Creek Road; southerly along said road to the Anchor Dam Road at Anchor Reservoir (Owl Creek Road, Hot Springs County Road 1); southerly along said road to the Wind River Reservation boundary; westerly along said boundary to the divide between Owl Creek and the South Fork of the Wood River; easterly along said divide to the divide between Cottonwood Creek and Gooseberry Creek; northeasterly along said divide to the divide between Gooseberry Creek and Grass Creek; easterly along said divide to Wyoming Highway 120.

Area 120. Hamilton Dome. Beginning at the junction of the Upper Cottonwood Creek Road (Hot Springs County Road 10) and Wyoming Highway 120; southerly along said highway to the town of Thermopolis and the Broadway Street bridge over the Bighorn River; southerly up said river to the Wind River Reservation boundary; westerly, northerly, then westerly along said boundary to the Anchor Dam Road at Anchor Reservoir (Owl Creek Road-Hot Springs County Road 1); northerly and easterly along said road to the Lake Creek Road; northeasterly along said road to the Upper Cottonwood Creek Road (Hot Springs County Road 10); easterly along said road to Wyoming Highway 120; in addition, all non-Indian fee title lands in that portion of Hot Springs County within the exterior boundaries of the Wind River Reservation.

Area 121. Heart Mountain. All of the north drainage of the Shoshone River east of Wyoming Highway 120 and west of Wyoming Highway 295; all of the drainage of the Clark's Fork River east of Wyoming Highway 120 and west of Wyoming Highway 295 and Elk Basin Road.

Area 122. Shoshone River. Beginning where the Elk Basin Road (Wyoming Highway 295) crosses the Wyoming-Montana state line; easterly along said line to the Bighorn River; southerly up said river to Horseshoe Bend boat ramp; westerly along the Horseshoe Bend Road to Wyoming Highway 37; southerly along said highway to U.S. Highway 14A; easterly along said highway to the Bighorn River; southerly up said river to Stucco (WyoBen Bentonite Plant); from Stucco south to B.L.M. Road 1138; northwesterly along said road to U.S. Highway 310; northerly along said highway to the divide between the Shoshone River and Dry Creek; southwestly along said divide to the Park-Big Horn county line; southerly along said line to U.S. Highway 14-16-20; westerly along said highway to the town of Cody and the Shoshone River; northeasterly down said river to the Willwood Road (Wyoming Highway 295); northerly along said highway to the Wyoming-Montana state line.

Area 123. Yellowtail. Beginning at the Horseshoe Bend boat ramp on the Bighorn River; southerly up said river to U.S. Highway 14A; westerly along said highway to Wyoming Highway 37; northerly along said highway to the Horseshoe Bend Road; easterly along said road to the Horseshoe Bend boat ramp.

Area 124. Emblem. Beginning in the town of Greybull; southerly along U.S. Highway 16-20 to the divide between Antelope Creek and Elk Creek; westerly along said

divide to the divide between Elk Creek and Dorsey Creek; westerly along said divide to the divide between Fifteen Mile Creek and the Greybull River; westerly along said divide to Fenton Pass and the Fenton Pass Road (B.L.M. Road 1222); northerly along said road to Bighorn County Lane 40 1/2; southwestly along said road to Park County Road 3XQ; northerly and westerly along said road to the Lower Greybull Road (Park County Road 3LE); northeasterly along said road to the Park-Bighorn county line; northerly along said line to the divide between Dry Creek and the Shoshone River; northeasterly along said divide to U.S. Highway 310 (Wyoming Highway 789); southerly along said highway to B.L.M. Road 1138; southeasterly along said road to Stucco (WyoBen Bentonite Plant) and the Big Horn River; southerly up said river to the town of Greybull.

Area 125. Fifteen Mile. Beginning where Wyoming Highway 120 crosses the divide between the Greybull River and Fifteen Mile Creek; northerly and easterly along said divide to the divide between Dorsey Creek and Elk Creek; easterly along said divide to the divide between Elk Creek and Antelope Creek; easterly along said divide to U.S. Highway 16-20; southerly then easterly along said highway to its junction with the Big Horn Canal three (3) miles west of Manderson; southerly along said canal to its junction with Wyoming Highway 20-U.S. Highway 789 three-quarters (3/4) of a mile south of Worland; southwestly along said highway to Tie Down Gulch; westerly along said gulch to the divide between Cottonwood Creek and Gooseberry Creek; westerly along said divide to the divide between Gooseberry Creek and Grass Creek; westerly along said divide to Wyoming Highway 120; northwesterly along said highway to the divide between the Greybull River and Fifteen Mile Creek.

Area 127. Cottonwood. Beginning where Wyoming Highway 120 crosses the divide between Gooseberry Creek and Grass Creek; easterly along said divide to the divide between Gooseberry Creek and Cottonwood Creek; easterly along said divide to Tie Down Gulch; easterly down said gulch to the Big Horn River; southerly up said river to the Broadway Street bridge at the town of Thermopolis; westerly along said street to Wyoming Highway 120; northwesterly along said highway to the divide between Gooseberry Creek and Cottonwood Creek.

Area 128. Wind River. All of the drainage of the Wind River west of the west boundary of the Wind River Reservation and those areas of the Spence and Moriarty Wildlife Habitat Management Area that lie east of the East Fork of the Wind River.

Area 130. Big Sandy. Beginning at the town of Farson and U.S. Highway 191; northerly along said highway to the Big Sandy Reservoir Road (Sweetwater County Road 28); easterly along said road to the Big Sandy River at the Big Sandy Reservoir dam; northerly up said river to the Continental Divide; southeasterly along said divide to Mt. Nystrom; easterly from Mt. Nystrom to Sweetwater Gap and the headwaters of the Sweetwater River; southerly down said river to Wyoming Highway 28; southwestly along said highway to U.S. Highway 191 at the town of Farson.

Area 131. Steamboat. Beginning at the junction of Interstate Highway 80 and Wyoming Highway 372; northwesterly along Wyoming Highway 372 to the Fontenelle Dam Road (Lincoln County Road 313); northerly then easterly along said road to the County Line Road (Sweetwater County Road 52); southerly along said road to the Eighteen Mile Road (Sweetwater County Road 49); northeasterly along said road to U.S. Highway 191; southerly along said highway to U.S. Highway 28; northeasterly along said highway to the Oregon Buttes Road (Sweetwater County Road 74); southerly along said road to the Continental Divide Road; northerly along said road to the Sand Creek Road; easterly along said road to the Red Creek Road (B.L.M. Road 3219); southeasterly along said road to the Cyclone Ridge Road (B.L.M. Road 3216); easterly along said road to the Bison Basin Road (B.L.M. Road 3221); southerly along said road to the Hadsell Road (B.L.M. Road 3217); easterly along said road to the Osborne Road (B.L.M. Road 3212); easterly along said road to the Wamsutter-Crooks Gap Road (Sweetwater County Road 23); southerly along said road to Interstate Highway 80; westerly along said highway to Wyoming Highway 372.

Area 132. Cedar Mountain. Beginning where the Flaming Gorge Reservoir crosses the Wyoming-Utah state line; westerly along said line to the Meeks Cabin Dam Road (Uinta County Road 271); northerly along said road to Uinta County Road 204; westerly along said road to Uinta County Road 207; northerly along said road to Uinta County Road 202; northeasterly along said road to Interstate Highway 80; easterly along said highway to the Green River; southerly down the east bank of said river to Flaming Gorge Reservoir; southerly along the east shore of said reservoir to the Wyoming-Utah state line.

Area 133. Uinta. Beginning where Interstate Highway 80 crosses the Wyoming-Utah state line; easterly along said highway to Uinta County Road 202; southwestly along said road to Uinta County Road 207; southerly along said road to the Uinta County Road 204; easterly along said road to the Meeks Cabin Dam Road (Uinta County Road 271); southerly along said road to the Wyoming-Utah state line; westerly then

northerly along said line to Interstate Highway 80.

Area 134. Bear River Divide. Beginning where Wyoming Highway 89 crosses the Wyoming-Utah state line west of Sage Junction; northeasterly along said highway to Wyoming U.S. Highway 30; easterly then southerly along said highway to Interstate Highway 80; westerly along said highway to Wyoming Highway 412; northwesterly along said highway to U.S. Highway 189; southerly along said highway to Muddy Creek; westerly along said creek to the Amoco Sulfur Haul Road; southerly then westerly along said road to the Whitney Canyon Road; westerly along said road to Uinta County Road 103; southerly along said road to Wyoming Highway 89; northerly along said highway to the Wyoming-Utah state line; northerly along said line to Wyoming Highway 89.

Area 135. West Green River. Beginning at the junction of Wyoming Highway 372 and Interstate Highway 80; westerly along said interstate highway to U.S. Highway 30; northwesterly along said highway to Sage Junction and Wyoming Highway 89; southwestly along said highway to the Wyoming-Utah state line; northerly along said line to the Wyoming-Idaho state line; northerly along said line to the divide between the Salt River and Bear River; easterly along said divide to the divide between the Salt River and Smith's Fork; northeasterly along said divide to Commissary Ridge; southeasterly along said ridge to the head of LaBarge Creek; southeasterly down said creek to the Green River; southeasterly along said river to Fontenelle Dam and the Fontenelle Dam Road (Lincoln County Road 313); westerly along said road to Lincoln County Road 316; southerly along said road to Wyoming Highway 372; southeasterly along said highway to Interstate Highway 80.

Area 138. Boulder. Beginning at the Fontenelle Dam on the Green River; northerly up said river to Wyoming Highway 351; easterly along said highway to the New Fork River; northerly up said river to Boulder Creek; easterly up said creek to the Middle Fork of Boulder Creek; easterly up said creek to the Continental Divide; southerly along said divide to the Big Sandy River; southerly down said river to the Big Sandy Reservoir Road (Sweetwater County Road 28); westerly along said road to U.S. Highway 191; southerly along said highway to the 18 Mile Road (Sweetwater County Road 49); southwestly along said road to the County Line Road (Sweetwater County Road 52); northerly along said road to the Fontenelle Dam Road (Lincoln County Road 313); westerly along said road to Fontenelle Dam and the Green River.

Area 139. Pinedale. Beginning where the East Green River Road (Sublette County Road 23-110) intersects Wyoming Highway 351; northerly along said highway to Cora Junction and U.S. Highway 191; easterly along said highway to Pine Creek; northerly up said creek to Summit Lake; easterly to Mt. Helen and the Continental Divide; southerly along said divide to the Middle Fork of Boulder Creek; westerly down said creek to Boulder Creek; westerly down said creek to the New Fork River; southerly down said river to Wyoming Highway 351; westerly along said highway to the East Green River Road (Sublette County Road 23-110).

Area 140. New Fork. Beginning where U.S. Highway 191 crosses Pine Creek in the town of Pinedale; westerly and northerly along said highway to the Green River at Warren Bridge; northerly up said river to Jim Creek; easterly up said creek to the divide between the New Fork River and the Green River; southerly along said divide to the divide between the Green River and Pine Creek; southeasterly along said divide to Summit Lake and the head of Pine Creek; southerly down said creek to U.S. Highway 191.

Area 141. Green River. Beginning where Tosi Creek enters the Green River; westerly up said creek to the Union Pass Road (U.S.F.S. Road 600); northerly and easterly along said road to the Continental Divide; southerly along said divide to Mt. Helen; westerly to Summit Lake and the divide between the Green River and Pine Creek; northwesterly along said divide to the divide between the Green River and the New Fork River; northerly along said divide to the head of Jim Creek; westerly down said creek to the Green River; northerly up said river to Tosi Creek.

Area 142. Piney-Horse Creek. Beginning where the East Green River Road (Sublette County Road 23-110) intersects Wyoming Highway 351; westerly along said road to the Green River; northerly up said river to Cottonwood Creek; westerly up said creek to South Cottonwood Creek; westerly up said creek to the South Fork of South Cottonwood Creek; westerly up said creek to the divide between the Green River and the Greys River; northerly along said divide to the divide between the Hoback River and the Green River; easterly along said divide to U.S. Highway 191 at Hoback Rim; southerly along said highway to the East Green River Road (Sublette County Road 23-110) at Cora Junction; southerly along said road to Wyoming Highway 351.

Area 143. South Piney. Beginning where LaBarge Creek enters the Green River; westerly up said creek to the divide between the Green River and Greys River; northerly along said divide to the head of the South Fork of South Cottonwood Creek; easterly down said creek to South Cottonwood Creek; easterly down said creek to Cottonwood Creek; easterly down said creek to the Green River; southerly down said river to LaBarge Creek.

Area 144. Greys River. Beginning at the confluence of Greys River and the Snake River; easterly up the Snake River to Bailey Creek; southerly up said creek to Dry Wash Draw; easterly up said draw to the top of the Greyback Ridge; southerly along said ridge to the divide between the Greys River and the Green River; southerly, westerly and northerly along said divide to the divide between the Greys River and Smith Fork Creek; northerly and westerly along said divide to the divide between the Greys River and Salt River; northerly along said divide to the ridge between Squaw Creek and the Greys River; northeasterly along said ridge to the confluence of Squaw Creek and the Greys River; westerly down said river to the Snake River.

Area 145. Salt River. Beginning at the Wyoming-Idaho state line on the Snake River; easterly up said river to the Greys River; easterly up said river to the confluence of the Greys River and Squaw Creek; southwesterly from said confluence to the ridge between Squaw Creek and the Greys River; southerly up said ridge to the divide between the Greys River and the Salt River; southerly along said divide to the divide between the Bear River and the Salt River; westerly along said divide to the Wyoming-Idaho state line; northerly along said line to the Snake River.

Area 146. Fish Creek. Beginning where Kinky Creek enters the Gros Ventre River; northerly down said river to Fish Creek; northerly up said creek to the North Fork of Fish Creek; northerly up said creek to the Moccasin Basin Road (U.S.F.S. Road 30750) at Calf Creek; northerly up said road to the Continental Divide; southerly along said divide to the Union Pass Road (U.S.F.S. Road 600); southerly along said road to the Darwin Ranch Road (U.S.F.S. Road 620); westerly along said road to Kinky Creek; westerly down said creek to the Gros Ventre River.

Area 148. Teton. Beginning where U.S. Highway 26-287 crosses the western bank of the Buffalo Fork River at the private land boundary of the Pinto Ranch; southerly, westerly and northerly along said boundary to the Grand Teton National Park-Bridger Teton National Forest boundary; northerly along said boundary to the Grand Teton National Park-John D. Rockefeller Jr. Memorial Parkway boundary; westerly then northerly along said boundary to the Targhee National Forest boundary at the northwest corner of Grand Teton National Park; northerly along said boundary to the Yellowstone National Park boundary; easterly along said boundary to the Continental Divide; southerly and easterly along said divide to Togwotee Pass and U.S. Highway 26-287; westerly along said highway to the easternmost boundary of Grand Teton National Park; northerly and westerly along said boundary to U.S. Highway 26-287 and the Buffalo Fork River.

Area 149. Targhee. Beginning where Wyoming Highway 22 crosses the Wyoming-Idaho state line; northerly along said line to the southern boundary of Yellowstone National Park; easterly along said boundary to the Caribou-Targhee National Forest boundary; southerly along said boundary to Teton Pass and Wyoming Highway 22; westerly along said highway to the Wyoming-Idaho state line.

Area 150. Wilson. Beginning where the Caribou-Targhee National Forest boundary crosses Wyoming Highway 22 at Teton Pass; northerly along said boundary to the Grand Teton National Park boundary; northerly and southerly along said boundary to U.S. Highway 191; southerly along said highway to its junction with Wyoming Highway 22; westerly along said highway to Teton Pass.

Area 151. Fall Creek. Beginning where Wyoming Highway 22 crosses the Snake River; southerly and westerly down said river to the Wyoming-Idaho state line; northerly along said line to Wyoming Highway 22; easterly along said highway to the Snake River.

Area 152. Lower Hoback. Beginning where U.S. Highway 191 crosses Flat Creek at the north edge of the town of Jackson; due east to the National Elk Refuge boundary; easterly along said boundary to the Bridger-Teton National Forest boundary and the ridge between Twin Creeks and Cache Creek; southeasterly along said ridge and the divide between Flat Creek and Cache Creek to Cache Peak; easterly along the divide between Flat Creek and Granite Creek to Pyramid Peak; southerly along the divide between the Gros Ventre River and the Hoback River to Steamboat Peak; southerly and westerly along the divide between Shoal Creek and Dell Creek to the Riling Draw road; southerly along said road to the Dell Creek Road; westerly along said road to the Hoback River; westerly down said river to Cliff Creek; southerly up Cliff Creek to the divide between the Greys River and the Hoback River; northwesterly along said divide to the divide between the Greys River and Willow Creek; northerly along said divide to the divide between Willow Creek and Bailey Creek (Greyback Ridge); northerly along said divide to Dry Wash Draw; westerly down said draw to Bailey Creek; northwesterly down said creek to the Snake River; northerly up said river to Wyoming Highway 22; easterly along said highway to U.S. Highway 191; easterly along said highway to Flat Creek at the north edge of the town of Jackson.

Area 153. Monument Ridge. Beginning at the head of Cliff Creek; northerly down said creek to the Hoback River; southerly up said river to the South Fork of the

Hoback River; easterly to the Hoback Rim and the divide between the Hoback River and the Green River; southwesterly along said divide to the divide between the Hoback River and the Greys River; northerly along said divide to the head of Cliff Creek.

Area 154. Raspberry Ridge. Beginning where U.S. Highway 191 crosses the divide between the Green River and the Hoback River on the Hoback Rim; southwesterly along said divide to a point due east of the confluence of the South Fork of the Hoback River and the Hoback River; due west to the Hoback River; northerly down said river to the Dell Creek road; easterly along said road to the Riling Draw Road; northerly along said road to the divide between Shoal Creek and Dell Creek; northeasterly along said divide to the divide between the Gros Ventre River and the Hoback River at Steamboat Peak; southeasterly along said divide to the divide between the Green River and the Hoback River at Hodges Peak; southerly along said divide to U.S. Highway 191.

Area 155. Crystal Peak. Beginning at the National Elk Refuge boundary at the north edge of the town of Jackson; northeasterly along said boundary to the Gros Ventre River; easterly up said river to Kinky Creek; easterly up said creek to the Darwin Ranch Road (U.S.F.S. Road 620); easterly along said road to the divide between the Gros Ventre River and the Green River; southwesterly along said divide to the divide between the Gros Ventre River and the Hoback River at Hodges Peak; westerly along said divide to the divide between Granite Creek and Flat Creek at Pyramid Peak; westerly along said divide to the divide between Flat Creek and Cache Creek at Cache Peak; northerly along said divide to the divide between Twin Creeks and Cache Creek at Jackson Peak; westerly along said divide to the National Elk Refuge boundary; westerly along said boundary to the town of Jackson.

Area 156. Spread Creek. Beginning where the Grand Teton National Park boundary crosses the Gros Ventre River; northerly along said boundary to U.S. Highway 26-287; easterly along said highway to Togwotee Pass and the Continental Divide; southerly along said divide to the Moccasin Basin Road (U.S.F.S. Road 30750); southerly down said road to the North Fork of Fish Creek at Calf Creek; southerly down said creek to Fish Creek; southwesterly down said creek to the Gros Ventre River; westerly down said river to the Grand Teton National Park boundary.

Area 157. Boysen. All lands within the Bureau of Reclamation's Riverton and Boysen Unit boundaries and those lands within Boysen State Park south of Cottonwood Creek and west of Boysen Reservoir and those lands within Boysen State Park south of U.S. Highway 20-26.

Area 160. Beaver Creek. Beginning where U.S. Highway 287 intersects the south boundary of the Wind River Reservation; easterly along said boundary to Wyoming Highway 135; southerly along said highway to U.S. Highway 287; northwesterly along said highway to the south boundary of the Wind River Reservation.

Area 161. St. Mary's Creek. Beginning on Wyoming Highway 72 at the town of Hanna on Wyoming Highway 72; southerly along said highway to U.S. Highway 30; westerly along said highway to Interstate Highway 80 at Walcott; westerly along said highway to the North Platte River; northerly down said river to the Medicine Bow River; easterly up said river to the Hanna-Leo Road (Carbon County Road 291); southerly along said road to Wyoming Highway 72 at the town of Hanna.

Area 162. Water Dog Lakes. Beginning where U.S. Highway 191 crosses the Green River at Warren Bridge; northwesterly along said highway to the divide between the Hoback River and the Green River (Hoback Rim); northerly along said divide to the divide between the Green River and the Gros Ventre River at Hodges Peak; northeasterly along said divide to the Darwin Ranch Road (U.S.F.S. Road 620); easterly along said road to the Union Pass Road (U.S.F.S. Road 600); southerly and easterly along said road to Tosi Creek; easterly down said creek to the Green River; southerly down said river to U.S. Highway 191.

Area 163. Middle Fork. Beginning at the junction of the Barnum Mountain Road and the Outlaw Cave Access Road west of the town of Barnum; southerly along the Outlaw Cave Access Road to the Middle Fork of the Powder River; easterly down said river to Buffalo Creek; southerly down said creek to the 33 Mile Road (Natrona County Road 110); northwesterly along said road to the Hazelton Road (Washakie County Road 81); northerly along said road to the Barnum Mountain Road; easterly along said road to the Outlaw Cave Access Road.

Area 164. Nowater. Beginning at the junction of U.S. Highway 16 and Bluebank Road (B.L.M. Road 1411); southerly along said road to the Nowater Stock Drive Road; westerly along said road to the Mud Creek Road; southerly along said road to the divide between Nowater Creek and Kirby Creek; westerly along said divide to the head of Walter's Draw; westerly down said draw to the Big Horn River; northerly down said river to Tie Down Gulch; northwesterly up said gulch to U.S. Highway 20; northeasterly along said highway to U.S. Highway 16; easterly along said highway to the Bluebank Road.

Area 165. YU Bench. Beginning at the junction of Wyoming Highway 120 and U.S. Highway 14-16-20; easterly along said highway to the Park-Bighorn County line;

southerly along said line to the Lower Greybull Road (Park County Road 3LE); southwesterly along said road to Park County Road 3XQ; southerly and easterly along said road to Big Horn County Lane 40-1/2; northeasterly along said road to the Fenton Pass Road (B.L.M. Road 1222); southerly along said road to the divide between the Greybull River and Fifteen Mile Creek; southwesterly along said divide to Wyoming Highway 120; northwesterly along said highway to U. S. Highway 14-16-20.

Area 168. Medicine Butte. Beginning where Interstate Highway 80 crosses the Wyoming-Utah state line; northerly along said line to Wyoming Highway 89; southeasterly along said highway to its junction with Uinta County Road 103; northerly along said road to the Whitney Canyon Road; easterly along said road to the Amoco Sulfur Haul Road; easterly then northerly along said road to Muddy Creek; easterly down said creek to U.S. Highway 189; northerly along said highway to Wyoming Highway 412; southeasterly along said highway to Interstate Highway 80; westerly along said highway to the Wyoming-Utah state line.

Area 169. Tisdale Mountain. Beginning where Interstate Highway 25 crosses the South Fork of the Powder River; southeasterly along said highway to the Midwest interchange and the Smoky Gap Road (Natrona County Road 115); westerly along said road to the Dead Horse Road (Natrona County Road 114); southwesterly along said road to the Wild Horse Trail Road (Natrona County Road 113); westerly along said road to the 33 Mile Road (Natrona County Road 110); northwesterly along said road to the Willow Creek Road (Natrona County Road 111); northeasterly along said road to the Lone Bear Road (Natrona County Road 112); southerly along said road to Willow Creek; northwesterly down said creek to the South Fork of the Powder River; northerly down said river to Interstate 25.

Area 170. Riverview. All non-Indian owned fee title lands within the following described area: Beginning where Wyoming Highway 789 crosses the Big Wind River near the City of Riverton; northwesterly up said river to Diversion Dam and the southern Riverton Reclamation Unit boundary; easterly, southerly, and northeasterly along said boundary to the Boysen State Park boundary south of Wyoming Highway 789; southerly, easterly, then northerly along said boundary to the eastern boundary of the Wind River Reservation; southerly, then westerly along said boundary to Wyoming Highway 135; northwesterly along said highway to Wyoming Highway 136; northwesterly along said highway to Wyoming Highway 789; northwesterly along said highway to the Big Wind River near the City of Riverton.

Area 171. Crowheart Butte. All non-Indian owned fee title lands within the exterior boundaries of the Wind River Reservation; excluding Deer Hunt Areas 157 and 170, those areas of the Spence and Moriarity Wildlife Management Area that lie east of the East Fork of the Wind River, and those lands within Hot Springs County.

WYOMING GAME AND FISH COMMISSION

By: Charles C. Price
Charles C. Price, President

Dated: April 22, 2015

IMPORTANT HUNTING INFORMATION

Reference Wyoming Game and Fish Commission Chapter 2 General Hunting Regulation and W.S. § 23-1-103, § 23-1-302, § 23-1-703, § 23-2-101, § 23-2-106, § 23-3-104, § 23-3-111, § 23-3-304, § 23-3-305, § 23-3-306 and § 23-3-308.

DISCLAIMER. The following sections are a condensed summary of applicable wildlife laws and other important information. This summary is in no way intended to alter the content or statutory intent of those laws. If you have any questions regarding the precise language, you can view a copy of the State Statutes (Title 23) and Wyoming Game and Fish Commission (Commission) Regulations, available at the Cheyenne Headquarters, Department Regional Offices, the Department website or consult the following websites: <http://soswy.state.wy.us> or <http://legisweb.state.wy.us>.

ACCESS AND VEHICLE TRAVEL ON LANDS ENROLLED IN THE DEPARTMENT'S PLPW WALK-IN AREA OR HUNTER MANAGEMENT AREA ACCESS PROGRAMS. Private lands enrolled in either the Walk-in Area or Hunter Management Area Programs only grant access to hunters or anglers for the species of wildlife and for the time periods specified in Department publications. Hunters/anglers wishing to use enrolled PLPW private lands for any other wildlife species, activity or time period must obtain permission from the landowner or person in charge of the property. Travel by motorized vehicle is prohibited, except as otherwise stated. Department publications or signs

shall serve as official regulations of the Commission and may advise of additional restrictions. The landowner or person in charge of the property may grant permission for motorized vehicle travel contrary to Department signs or publications.

ACCESS YES. The Access Yes Program provides for a voluntary contribution from hunters and anglers used for providing public hunting and fishing access on private lands and inaccessible public lands. Hunters and anglers can donate any whole dollar amount to Access Yes when they purchase or apply for licenses. The Access Yes Program was established in response to numerous public requests that the Department help address the difficulties of finding places to hunt and fish. Donating to the program does not provide or imply access to all private lands in Wyoming.

AGE RESTRICTIONS; BIG OR TROPHY GAME. The minimum age to take any big or trophy game animal is twelve (12) years. Any person under the age of fourteen (14) years shall at all times when hunting be accompanied by a person over the age of majority (18 years of age) who possesses and can exhibit a hunter safety certificate or who currently holds or has been issued a Wyoming big game hunting license within the last five (5) years. If the person accompanying the hunter under the age of fourteen (14) years is not the parent or guardian of the hunter, the hunter shall have in his possession a permission slip signed by his parent or guardian allowing him to hunt under supervision. Each accompanying adult shall supervise not more than one (1) hunter under the age of fourteen (14) years.

ARCHERY LICENSES, EQUIPMENT AND SPECIAL SEASONS. Archery equipment is legal to take game animals. No person shall hunt big game or trophy game animals with archery equipment during a special archery hunting season without first obtaining an archery license and the appropriate hunting license. No person holding an archery license shall take big game or trophy game animals during a special archery hunting season or during a limited quota archery season by the use of any type of firearm. When hunting antelope, bighorn sheep, black bear, deer, mountain goat, mountain lion or gray wolf where designated as a trophy game animal, an archery hunter shall use a longbow, recurve bow or compound bow of not less than forty (40) pounds draw weight. When hunting elk or moose, an archery hunter shall use a longbow, recurve bow or compound bow of not less than fifty (50) pounds draw weight. A crossbow hunter shall use a crossbow having a peak draw weight of at least ninety (90) pounds and a bolt of at least sixteen (16) inches in length. The broadhead used on arrows or bolts shall have a minimum cutting width of one (1) inch. Upon request by a game warden or other Wyoming law enforcement officer, a person who has taken a big or trophy game animal during a special archery hunting season or during a limited quota archery only hunting season shall allow testing of the animal's tissue for confirmation of compliance with this section.

An archery license shall not be required in addition to a limited quota Type 9 license to participate in a limited quota archery only season. Legal archery equipment may be used to hunt big game or trophy game animals during the regular hunting seasons as set forth in Commission regulations.

ARTIFICIAL LIGHT FOR HUNTING PROHIBITED; EXCEPTION. No person shall take any wildlife with the aid of or by using any artificial light or lighting device except that predators may be taken with the aid of an artificial light or lighting device by:

- (i) A public officer authorized to and conducting predator control;
- (ii) A landowner, resident manager or person with the landowner's or a resident manager's written permission to take predators, on land under the landowner's control for the protection of his property.

It is prima facie evidence of a violation if a person uses an artificial light in an area that may be inhabited by wildlife while having in his possession and control any device for taking wildlife. This shall not prohibit the hunting on foot of raccoon with the aid of a handlight, provided the hunter is accompanied by a raccoon hunting dog and, if hunting on private lands, has the written permission of the landowner or his agent.

AUTOMATIC WEAPON AND SILENCER. No person shall take any wildlife with any fully automatic weapon. Firearm silencers may be used during the legal taking of any game animal.

BAG LIMITS AND NUMBERS OF LICENSES. No person shall apply for or receive more than one (1) license for each big or trophy game species during any one (1) calendar year, except as otherwise provided in Commission regulations. The maximum bag limit for big game animals and trophy game animals for any person with the proper licenses and permits shall not exceed the following number of animals: one (1) elk per license; one (1) moose per license; one (1) bighorn sheep per license; one (1) mountain goat per license; one (1) antelope per license; one (1) deer per license; one (1) black bear per license; one (1) mountain lion per license; one (1) gray wolf per license.

BAITING OF BIG GAME ANIMALS PROHIBITED EXCEPT BY QUALIFIED PERSONS. No person shall take any big game animal over, or by the use of bait except as follows: any legally blind person, person confined to a wheelchair, person hunting with a permit issued pursuant to W. S. § 23-3-304 (d)(iv) or any person hunting with a license issued pursuant to W. S. § 23-1-705 (j) may place a bait for big game or take a big game animal by the use of bait.

CHECK STATIONS. Every hunter, angler or trapper of furbearing animals shall stop and report at every check station on route to or from the hunting, fishing or trapping area, regardless if the person has wildlife in possession. Upon request of any authorized Department representative, anyone who has been hunting, fishing or trapping shall produce a valid license and conservation stamp, if required, and special management permit, if required, for game animals, game birds, furbearing animals or fish. Even if the game meat or fish in possession has been cut and wrapped or processed, the person transporting wildlife shall stop and report at the check station. Any person transporting wildlife harvested in another state or country shall stop at check stations on their route.

CHRONIC WASTING DISEASE (CWD) is a fatal disease of deer, elk and moose. Special regulations were formulated to decrease the spread of the disease. Details about CWD, where it exists in Wyoming and testing for CWD, can be found on the Department website.

The Department will be collecting tissue samples at various check stations and meat processing facilities for CWD prevalence. Hunters wishing to have their animal tested outside the Department's surveillance program may have an animal tested at the Wyoming State Veterinary Lab (WSVL) in Laramie for a fee. Hunters need to contact the WSVL at (307) 766-9925 for testing details and cost.

The Department and public health officials recommend not eating any animal that is obviously ill. Wear rubber/latex gloves when field dressing an animal as a general precaution against all diseases.



CLOSED AREAS. All areas within the state of Wyoming not opened by specific order of the Commission shall be closed to the taking of all big game animals, trophy game animals, small game animals, furbearing animals, upland and migratory game birds.

CLOTHING REQUIREMENTS. HUNTERS REQUIRED TO WEAR FLUORESCENT ORANGE CLOTHING. No person, other than archers and crossbow hunters hunting during a special archery season or limited quota archery only Type 9 season, shall hunt any big or trophy game animal without wearing in a visible manner one (1) or more exterior garments that shall include a hat, shirt, jacket, coat, vest or sweater of a fluorescent orange color. Fluorescent orange camouflage is legal. Muzzle-loader hunters participating in limited quota muzzle-loading seasons are required to meet the fluorescent orange requirements.

CONSERVATION STAMP REQUIRED. Each person licensed to hunt or fish in Wyoming shall purchase one (1) conservation stamp valid for the calendar year. The stamp shall be signed in ink and shall be in possession of the person while HUNTING OR FISHING. Hunters or anglers who acquire a lifetime conservation stamp or a conservation stamp authorization from the Department's Electronic Licensing Service (ELS) shall not be required to meet the signature provision.

Persons holding the following licenses are exempt from the requirement to purchase a conservation stamp while exercising hunting or fishing privileges under THESE licenses:

- Daily hunting or fishing license;
- Special limited fishing permit holders;
- Wyoming fifty (50%) percent disabled veteran fishing license; or,
- Licenses reissued to a veteran with disabilities.

Persons holding the following licenses are exempt from the requirement to purchase a conservation stamp while exercising hunting or fishing privileges under ANY Wyoming license. The person shall, at all times, be in possession of the license allowing the conservation stamp exemption while in the field:

- Any Wyoming pioneer hunting or fishing license;
- Wyoming one hundred (100%) percent disabled veteran game bird, small game and fishing license;
- Military combat general elk or general deer license; or,
- Military combat game bird or small game license.

Conservation stamps may be purchased from the Cheyenne Headquarters, Department Regional Offices, license selling agents throughout the state and the Department website. A lifetime conservation stamp may be purchased by applying to the Cheyenne Headquarters or through any Department Regional Office.

DATING AND DISPLAY OF GAME ANIMAL CARCASS COUPONS. When any big game animal, trophy game animal or wild turkey is killed under a license the licensee shall detach, sign and date the proper carcass coupon and attach the coupon to the carcass in a readily visible manner **before leaving the site of the kill. When dating a carcass coupon, the entire day and month of the kill shall be completely cut out and removed.** The carcass coupon shall remain on the game animal or wild turkey carcass at all times until the meat undergoes processing, or on the trophy game animal hide until it reaches the hunter's home or a taxidermist, except that during transportation of the carcass or hide the validated carcass coupon may be removed to prevent its loss. If the carcass coupon is removed for transportation of the carcass or hide, it must be completely filled out and in the possession of the person accompanying the carcass or hide at all times. While quarters or pieces of an animal are being packed from the field, the carcass coupon shall remain with the person transporting the animal.

DEFINITIONS:

"Accompanied by a Mentor" means being directly supervised at all times by a mentor who is within sight and direct voice contact.

"Aircraft" means any machine or device (including but not limited to airplane, helicopter, glider, dirigible or unmanned aerial vehicle (UAV)) capable of atmospheric flight.

"Antlered" means a deer, elk or moose that has visible antler growth plainly protruding from the skull. Where a minimum number of antler points are specified, points shall be counted on the side with the greater number of points.

"Antlerless" means a deer, elk or moose that has no antler growth plainly protruding from the skull. Females and young-of-the-year without visible antlers are antlerless big game animals.

“Approved Landfill” means a municipal or county landfill permitted by the State of Wyoming Department of Environmental Quality Solid Waste Rules and Regulations, Chapter 2 revised as of October 15, 1998, which does not include any later amendments or additions of the incorporated matter.

“Archery Equipment” means crossbows, longbows, recurve bows, compound bows and arrows.

“Artificial Light or Lighting Device” means any man-made light or lighting device that projects a light visible to the unaided eye outside of the device, or any battery-powered device that provides an enhanced ability to see in the dark.

“Bag Limit” means the maximum number of big game animals or trophy game animals that may be taken by an individual possessing a proper license.

“Big Game Animal” means antelope, bighorn sheep, deer, elk, moose or mountain goat.

“Bureau of Land Management (B.L.M.)” means the land management agency administered by the U.S. Department of the Interior.

“Bureau of Reclamation Land” means lands administered by the U.S. Department of the Interior Bureau of Reclamation.

“Certificate of Competency and Safety in the Use and Handling of Firearms” means a certification issued for the completion of an approved hunter safety course.

“Doe” means an adult female antelope or adult female deer.

“Drainage” means all lands within the watershed of a named river or stream, including all tributaries and standing waters, which drain into that river or stream.

“Edible Portion of Big Game Animal” means the meat of the front quarters as far down as the knees, meat of the hindquarters as far down as the hocks, and the meat along the backbone between the neck and hindquarters including the loins and tenderloins, excluding meat on the ribs and neck.

“Fawn” means young-of-the-year antelope or young-of-the-year deer.

“Handgun” means a firearm that has a barrel length of less than sixteen (16) inches, has a short stock, and is designed to be fired by the use of a single hand without shoulder support.

“Hunt Area” means the geographic boundaries within which a license shall be valid.

“Irrigated Land” means agricultural lands that are supplied with supplemental water by ditches, pipes, flooding or spraying.

“Mentee” means a person who has received special authorization from the Department to take wildlife and who has not received a certificate of competency and safety in the use and handling of firearms.

“Mentor” means a person who is at least eighteen (18) years of age, can demonstrate he has a certificate of competency and safety in the use and handling of firearms, possesses a valid Wyoming hunting license and is directly supervising not more than one (1) mentee, other than immediate family members, at a time while in the field.

“Motorized Vehicle” means any vehicle powered by an internal combustion or electric engine.

“Muzzle-loading Firearm” means a muzzle-loading rifle or muzzle loading handgun of at least .40 caliber and using a lead or expanding point bullet using a charge of at least fifty (50) grains of black powder or its equivalent.

“Off National Forest” means lands other than those administered by the U.S. Forest Service.

“Off National Grasslands” means lands other than the Thunder Basin National Grasslands and Bankhead-Jones lands administered by the U.S. Forest Service.

“On National Forest” means lands administered by the U.S. Forest Service.

“Point” means any protrusion from an antler one (1) inch or more in length.

“Predacious Bird” means English sparrow and sparrow.

“Predatory Animal” means coyote, jackrabbit, porcupine, raccoon, red fox, skunk, stray cat or gray wolf when located outside the Wolf Trophy Game Management Area and Seasonal Wolf Trophy Game Management Area as described in W.S. § 23-1-101(a)(xii)(B) (I) and (II).

“Private Land” means all fee title/deeded lands owned by a private individual, partnership or corporation.

“Processor” means a custom meat processor licensed by the Wyoming Department of Agriculture.

“Public Road or Highway” means any roadway that is open to vehicular travel by the public. The road surface, the area between the fences on a fenced public road or highway, and an area thirty (30) feet perpendicular to the edge of the road surface on an unfenced public road or highway shall be considered the public road or highway. Two-track trails on public lands are not public roads.

“Regular Hunting Seasons” means seasons which delineate the dates and hunt areas for the taking of big game or trophy game animals with legal weapons in accordance with the license types and limitations as set forth in Section 2 of Chapters 5 (Antelope), 6 (Deer), 7 (Elk), 8 (Moose), Sections 3 and 7 of Chapter 9 (Bighorn Sheep and Mountain Goat), Section 10 of Chapter 3 (Black Bear) and Section 4 of Chapter 42 (Mountain Lion) of the Commission regulations.

“Site of the Kill” means the location where the harvested animal died.

“Special Archery Seasons” means seasons that delineate the dates and hunt areas for the taking of big game or trophy game animals with legal archery equipment, in which a hunter with the proper hunting license and an archery license may hunt in addition to the regular hunting seasons in accordance with the limitations as set forth in Section 3 of Chapters 5 (Antelope), 6 (Deer), 7 (Elk), 8 (Moose), Sections 4 and 8 of Chapter 9 (Bighorn Sheep and Mountain Goat) and Section 11 of Chapter 3 (Black Bear).

“State Trust Land” means lands administered by the Office of State Lands and Investments.

“Trophy Game Animal” means black bear, grizzly bear, mountain lion or gray wolves within the Wolf Trophy Game Management Area and Seasonal Wolf Trophy Game Management Area as described in W.S. §23-1-101 (a)(xii)(B) (I) and (II).

“Type” means a limitation on a license in a particular hunt area for the sex of animal, the species of animal, the length of the season, the type of weapon or a portion of the hunt area in which the license shall be valid.

“Waste” means to leave, abandon or allow any edible portion of meat from a big game animal, game bird, game fish or small game animal to become tainted, rotten or otherwise unfit for human consumption prior to processing at a person’s home or at a processor.

“Youth License” means a big game license that may be issued to a resident or nonresident individual who is at least eleven (11) years of age and who has not attained eighteen (18) years of age at the time of application. The license shall not be valid until the licensee reaches his twelfth (12th) birthday. For all other species, excluding furbearing animals, requiring a license to take means a license that may be issued to a resident or nonresident individual who has not attained eighteen (18) years of age. For a resident youth trapping license this means residents under the age of seventeen (17).

DISABLED HUNTER INFORMATION. Contact the Cheyenne Headquarters or any Department Regional Office for specific information.

DUPLICATE AND REPLACEMENT LICENSE ISSUED UPON LOSS OR DESTRUCTION OF ORIGINAL; PURCHASE AND FEES. When any license issued has been lost or destroyed, the licensee may secure a duplicate of the original license from any Department Regional Office, the Cheyenne Headquarters or designated license selling agents. A duplicate license shall be issued if the original license was issued through the Department's Electronic Licensing Service (ELS) and contained a carcass coupon. A replacement license shall be issued if the original license was issued through the Department's ELS system and did not contain a carcass coupon. The licensee may secure a replacement license at the Cheyenne Headquarters, Department Regional Offices or from ELS agents. The Department shall charge a fee of five dollars (\$5) for each duplicate or replacement license.

EMERGENCY CLOSURES. The Commission may institute an emergency closure to shorten the season in any area at any time if a harvest quota is reached or if an emergency arises warranting the closure. Should a closure become necessary after the season opens, no refunds will be given for unused licenses.

GUIDES REQUIRED; EXCEPTIONS: ISSUANCE OF RESIDENT GUIDE LICENSE. No nonresident shall hunt big or trophy game animals on any designated wilderness area, as defined by federal or state law, in Wyoming unless accompanied by a licensed professional guide or a resident guide. There shall be at least one (1) licensed professional guide or resident guide accompanying each two (2) nonresident hunters. A resident guide shall not guide more than two (2) hunters in any calendar year on any national forest, wilderness area, national game refuge, or national park. Any resident possessing a valid big or trophy game animal license shall apply for and receive a free resident guide license prior to guiding any nonresident in designated wilderness areas. A resident guide license may be obtained at no charge from the Cheyenne Headquarters, Department Regional Offices and district game wardens.

HARVEST SURVEY. Each year a request to participate in the harvest survey is sent to a sample of hunters. Since a person can hunt so many species in Wyoming, some hunters may be asked to reply to more than one harvest survey questionnaire. Your reply provides critical data that Department wardens and biologists use to evaluate the past hunting season and set future hunting seasons. Even if you did not hunt, we need to hear from you to track hunter effort. We ask that you reply online, if possible, with your harvest survey information as soon as you are done hunting each species for the year and appreciate your time and assistance.

HUNTER SAFETY/MENTOR PROGRAM; EXEMPTION. Except as otherwise provided, no person born on or after January 1, 1966, may take wildlife by the use of firearms on land other than that of his own family, unless that person can demonstrate they have obtained a certificate of competency and safety in the use and handling of firearms. Attendance and successful completion of a hunter safety course offered by an association or governmental agency approved by the Commission satisfies the requirements of this section.

Any active member, honorably discharged past member or veteran of the armed forces of the United States and any active member or retired Wyoming peace officer qualified pursuant to W.S. § 9-1-701 - 9-1-707 are exempt from the hunter safety requirement. Hunter safety exemption applications are available at the Cheyenne Headquarters or Department Regional Offices. This hunter safety exemption is not valid for those elk hunting within Grand Teton National Park (Hunt Areas 75 and 79), or for those participating in the Hunter Mentor Program.

A person who has not received a certificate of competency and safety in the use of handling firearms may apply to the Department for a special authorization to take wildlife with the use of a firearm while being accompanied by a person who is at least 18 years old, acting as a mentor, who possesses or can demonstrate he has successfully completed a hunter safety course and who possesses a valid Wyoming hunting license. A special authorization issued to an individual shall be valid for one (1) year from the date of issue and shall be in the possession of the recipient at all times while in the field. The application process may be completed on the Department website. A mentor shall not provide supervision for more than one (1) person, other than immediate family members, at a time in the field and shall accompany the mentee at all times to provide constant supervision.

IMPORTATION AND TRANSPORTATION OF DEER, ELK OR MOOSE TAKEN FROM IDENTIFIED CWD AREAS OUTSIDE OF WYOMING.

(a) No deer, elk or moose taken from within any other state, province or country within areas designated by the appropriate jurisdictional agency as positive for CWD in either deer, elk or moose shall be imported into Wyoming except harvested deer, elk or moose carcasses may be imported or transported into Wyoming to a private residence for processing, to a taxidermist, to a processor or to a CWD sample collection site in Wyoming provided the head and all portions of the spinal column are disposed of in an approved landfill.

(b) Except as provided in subsection (a) of this Section, only the following parts of any deer, elk or moose harvested may be imported: edible portions with no part of the spinal column or head attached; cleaned hide without the head; skull plate or antlers cleaned of all meat and brain tissue; teeth; or finished taxidermy mounts that have been cleaned of all meat and brain tissue.

ISSUANCE OF FULL PRICE DEER LICENSES AND REDUCED PRICE DOE/FAWN LICENSES. For deer, no person shall apply for and receive more than one (1) full price deer license (General, Type 0, 1, 2, 3, 4, 5 or 9) through the initial drawing. After the initial drawing is completed, any person may apply for and receive up to two (2) full priced deer licenses provided that at least one (1) license is a Limited Quota Type 3 any white-tailed deer license. However, no person shall apply for and receive more than a total of two (2) deer licenses valid for the taking of antlered or any deer, of which not more than one (1) shall be valid for antlered or any mule deer.

For deer, any person may apply for and receive a maximum of two (2) limited quota reduced price doe/fawn deer licenses (Type 6, 7 or 8) through the initial drawing. After the initial drawing is completed, any person may purchase up to four (4) limited quota reduced price doe/fawn deer licenses. However, no person shall apply for and receive more than a total of four (4) limited quota reduced price doe/fawn deer licenses. In Hunt Areas 24, 27, 29, 30, 32, 33 or 163 after the initial drawing is completed, any person may purchase an unlimited number of limited quota reduced price doe/fawn deer licenses.

It is a violation to apply for and receive more than the specified number of licenses allowed by Commission regulations.

LANDOWNER COUPONS. Antelope, deer and elk licenses shall have two (2) coupons attached: one (1) designated "antelope, deer or elk carcass coupon" and one (1) designated "landowner's coupon." When an antelope, deer or elk is harvested on a landowner's private land, the landowner's coupon shall be promptly detached, dated, signed and delivered to the landowner. Landowner's coupons are not transferable.

LEGAL FIREARMS FOR HUNTING BIG OR TROPHY GAME ANIMALS. When hunting bighorn sheep, elk, moose, mountain goat or black bear with a firearm, a hunter shall use any center-fire firearm of at least .24 caliber and firing a cartridge of at least two (2) inches in overall length. When hunting antelope, deer, mountain lion or gray wolf where designated as a trophy game animal, a hunter shall use any center-fire firearm of at least .22 caliber and having a bullet weight of at least sixty (60) grains and firing a cartridge of at least two (2) inches in overall length.

Big or trophy game animals may be taken with any other cartridge of at least .35 caliber and at least one and one-half (1.5) inches in overall length, or a cartridge that generally delivers at least five hundred (500) foot pounds of impact at one hundred (100) yards, or any shotgun firing "00" or larger buckshot, or a slug. Any muzzle-loading rifle or muzzle-loading handgun of at least .40 caliber using a charge of at least fifty (50) grains of black powder or its equivalent may also be used to hunt big or trophy game animals. Any center-fire firearm or muzzle-loading firearm used to hunt big or trophy game animals shall fire a lead or expanding point bullet.

Wyoming has no restrictive laws concerning firearms that may be legally possessed under the law of one's home state. Firearms may be carried uncased in vehicles; although safety dictates that all firearms in a vehicle should be unloaded with the action open.

LICENSE FRAUD PROHIBITED, INVALIDATION BY IMPROPER FEES. Department licenses, permits, stamps, tags or coupons shall not be altered by anyone other than authorized Department personnel. No license, permit, stamp, tag or coupon shall be transferred or used for the purpose of taking wildlife except by the individual to whom it was issued and therein named and while in that individual's possession. No individual shall take or attempt to take any wildlife using another individual's license, permit, stamp, tag or coupon. Any license, tag, permit or stamp shall not be valid unless the proper fees have been received by the Department. Any Wyoming Game and Fish law enforcement officer may seize as evidence any license, tag, stamp or permit that was obtained in violation of Commission regulations or Wyoming statutes.

OPEN HOURS FOR TAKING BIG GAME, TROPHY GAME AND SMALL GAME ANIMALS. Big game, trophy game and small game animals may only be taken from one-half (1/2) hour before sunrise to one-half (1/2) hour after sunset.

OUTFITTER INFORMATION. HUNTER RESPONSIBILITY WHEN BOOKING AN OUTFITTER OR PROFESSIONAL GUIDE. No person shall directly or indirectly compensate a person holding himself out as engaging in the business of, or acting in the capacity of, an outfitter or a professional guide unless that person provides proof that he is a licensed outfitter or professional guide as required by statute. Any person violating this statute is guilty of a misdemeanor. Before hiring an outfitter, the Department advises hunters to consult the Wyoming State Board of Outfitters and Professional Guides to verify the outfitter is licensed by the state of Wyoming. Hunters should also be aware landowners who outfit on their own deeded land, or deeded lands leased to them, are not required to be licensed as outfitters or guides. Contact: Wyoming State Board of Outfitters at 1950 Bluegrass Circle #280, Cheyenne, Wyoming, 82002 or call toll free 1-800-264-0981. Any license holder utilizing the services of an outfitter shall legibly print the name of the outfitter, the outfitter's license number and the type of outfitter license on the back of licensee's big or trophy game license.

PERMISSION TO HUNT, FISH OR TRAP. No person shall enter upon the private property of any person to hunt, fish or trap without the permission of the owner or person in charge of the property. The license must bear the signature of the landowner, lessee or agent of the owner on whose private property the hunter is hunting or the legitimate proof as evidence that permission to hunt, fish or trap has been granted.

PRECAUTIONS WHEN HUNTING IN AREAS OCCUPIED BY GRIZZLY BEARS. Hunters and anglers are reminded that many areas in and around the Bridger-Teton, Shoshone and Caribou-Targhee National Forests in northwest Wyoming are occupied by grizzly bears. The Department strongly recommends individuals working and recreating in these areas take precautions, including carrying bear pepper spray, to avoid conflicts with grizzly bears. Information about human safety in occupied grizzly habitat and proper storage of food and other attractants is available from the Cheyenne Headquarters, Department Regional Offices, U.S. Forest Service Offices and the Department website. Regulations concerning food/carcass storage in occupied grizzly habitat can be obtained from the U.S. Forest Service. Report conflicts with grizzly bears to the nearest Department Regional Office.

PROHIBITED ACTS. IT IS ILLEGAL TO:

- Shoot or attempt to kill any wildlife from any public road or highway. No person shall fire any firearm from, upon, along or across any public road or highway. No person shall knowingly fire any rifle from the enclosed lands of one person onto or across the enclosed lands of another without the permission of both persons. Use any dog to hunt, run or harass any big or trophy game animal, protected animal or furbearing animal except as otherwise provided by statute. The Commission shall regulate the use of dogs to take mountain lions and bobcats during hunting or trapping seasons.
- Use any dog to hunt, run or harass any big or trophy game animal, protected animal or furbearing animal except as otherwise provided by statute. The Commission shall regulate the use of dogs to take mountain lions and bobcats during hunting or trapping seasons.
- Use any aircraft to aid in the taking of any Wyoming wildlife, except predatory animals, whether by spotting or locating the wildlife, communicating with any person attempting to take the wildlife or by providing other aid to any person taking the wildlife within twenty-four (24) hours of being airborne. This section shall not apply to commercial, commuter or other aircraft used for the sole purpose of passenger transport.
- Take and leave, abandon or allow any game bird, game fish or game animal (except trophy game animal), or edible portion, to intentionally or needlessly go to waste.
- Transport illegally taken wildlife across state lines; such transportation is a violation of the Federal Lacey Act.
- Place any bait for the purpose of taking a big game animal or knowingly take a big game animal by the use of bait, except as authorized by Commission regulation or state statute.
- Allow the edible portions of a big game animal to spoil. Failure to properly dress and care for any big game animal you have killed and, if the carcass is reasonably accessible, within forty-eight (48) hours to take or transport the carcass to your camp, and there properly care for the carcass is prima facie evidence of a violation.
- Abandon meat from a big game animal or game bird at a meat processing plant. Unless there is an express agreement between the processing plant and the person providing otherwise, any meat from a big game animal or game bird left at a meat processing plant for more than forty-five (45) days is prima facie evidence of a violation if written notice of the expiration of time has been attempted by the processing plant in accordance with rules and regulations promulgated by the Commission.
- Carry a firearm with a cartridge therein, or take any wildlife, while intoxicated or under the influence of any controlled substance.
- Harass, pursue, hunt, shoot or kill any Wyoming wildlife except predatory animals with, from or by use of any flying machine, automotive vehicle, trailer, motor-propelled wheeled vehicle or vehicle designed for travel over snow. The Commission may exempt handicapped hunters from any of these provisions. It is also illegal to shoot waterfowl from a boat under power or sail.

RETENTION OF EVIDENCE TO IDENTIFY SEX, SPECIES AND HORN OR ANTLER DEVELOPMENT OF BIG GAME ANIMAL HARVESTED. Any person who takes any big game animal in a hunt area where the taking of either sex, species, or antler or horn development is controlled or prohibited by regulation shall comply with this section while said animal is in transportation from the site of the kill to the residence of the person taking the animal, or delivered to a processor for processing.

(a) In hunt areas where the taking of any big game animal is restricted to antler point or horn size by regulation, the antlers or horns shall accompany the carcass, or edible portions thereof.

(b) In hunt areas where the taking of any big game animal is restricted to a specific sex of animal by regulation, either the visible external sex organs, head or antlers shall accompany the carcass, or edible portions thereof.

(c) In hunt areas where the taking of a species of deer is controlled or prohibited by regulation, either the head or the tail of the deer shall accompany the animal, or edible portion thereof as evidence of the species taken.

RETRIEVAL OF EDIBLE PORTIONS OF GAME MEAT FROM THE FIELD. The Department may require substantive proof from any person who fails to retrieve from the site of kill all edible portions of a big game animal as to why the edible portions were not removed from the field.

SHIPPING GAME ANIMALS OUT OF STATE. Except as otherwise exempt by state statute, no game animal or game bird, or any part thereof, shall be shipped or transported from the state unless accompanied by the licensee who harvested the animal, in possession of a proper coupon, or unless the amount does not exceed twenty-five (25) pounds and is properly tagged with a Wyoming interstate game tag. Only twenty-five (25) pounds from any one (1) big or trophy game animal may be exported from the state except as otherwise provided; the part to be exported from the state is of a nonedible trophy or hidelike nature and properly tagged with a Wyoming interstate game tag; the big or trophy game animal was legally harvested by a nonresident and is tagged with a Wyoming interstate game tag.

SHIPPING GAME ANIMALS WITHIN WYOMING. Except as otherwise exempt by state statute, no person shall ship, transport or receive for shipment or transportation within Wyoming any game animal, game bird, or any part thereof, unless tagged with a Wyoming interstate game tag, or unless the transportation is by a person accompanying the carcass of a big or trophy game animal who is in possession of a proper coupon, or the transportation is by a properly licensed game bird or small game hunter in possession of not more than his daily bag or possession limit.

TAKING PREDATORY ANIMALS AND PREDACIOUS BIRDS. Predatory animals and predacious birds may be taken without a license.

TRANSPORTATION AND DISPOSAL OF DEER, ELK AND MOOSE TAKEN FROM CHRONIC WASTING DISEASE (CWD) HUNT AREAS WITHIN WYOMING. It shall be the purpose of this section to regulate the transportation and disposal of potentially CWD infected deer, elk and moose carcasses to areas outside of the hunt areas with CWD and potentially reduce the spread of the disease to other areas in and outside of Wyoming. Hunters may obtain current CWD information on the Department website.

(a) No deer, elk or moose taken or possessed from any hunt area shall be transported to any other hunt area within Wyoming or to any other state, province or country except as provided in this section.

(b) Deer, elk and moose carcasses harvested from any hunt area in Wyoming may be transported within Wyoming to a camp, a private residence for processing, a taxidermist, a processor, or a CWD sample collection site in Wyoming, provided the head and all portions of the spinal column remain at the site of the kill or such parts are disposed of in any approved landfill in Wyoming.

(c) Except as provided in this subsection (b) of this section, only the following parts of any deer, elk or moose harvested from any hunt area in Wyoming may be transported to any other hunt area in Wyoming: edible portions with no part of the spinal column or head attached; cleaned hide without the head; skull plate or antlers that have been cleaned of all meat and brain tissue; teeth; or finished taxidermy mounts.

(d) Only the following parts of any deer, elk or moose harvested from any hunt areas in Wyoming may be transported to other states, provinces or countries: edible portions with no part of the spinal column or head attached; cleaned hide without the head; skull plate or antlers that have been cleaned of all meat and brain tissue; teeth; or finished taxidermy mounts. Whole deer, elk and moose carcasses harvested from any area shall not be transported out of Wyoming.

(e) Nothing in this section shall allow for the removal of evidence of sex or species required by regulation.

(f) Nothing in this section shall apply to the transportation or disposal of deer, elk and moose carcasses by any governmental agency or educational institution.

VEHICLE RESTRICTIONS ON FEDERAL LAND. Sportsmen are advised that many areas of National Forest and Bureau of Land Management lands are subject to travel and vehicle use limitations to protect resources. Maps and additional information regarding these limitations are available at U.S. Forest Service, Bureau of Land Management and other agency offices near these public lands.


WILDLIFE DAMAGE MANAGEMENT STAMP. The Wyoming Legislature created the Wyoming Animal Damage Management Board to manage rabid wildlife, mitigate damage caused to livestock, wildlife and crops by predatory animals, predacious birds and depredating animals and protect human health and safety. The legislation developed several sources of funding for the Board to carry out its responsibilities including the creation of a WILDLIFE DAMAGE MANAGEMENT STAMP. The fee for this stamp will be established annually by the Animal Damage Management Board. The stamp may be voluntarily purchased by those interested in funding the activities of the Board at the Cheyenne Headquarters, Department Regional Offices and all license selling agents. Purchase of the stamp is not mandatory, but does provide sportsmen a voluntary means to fund predator management.

WILDLIFE VIOLATOR COMPACT. Wyoming is a member of the Wildlife Violator Compact. The Compact enables a violator from any member state to accept a wildlife citation and proceed on his way without being required to post an appearance bond unless the violation requires MUST APPEAR and NO BOND ACCEPTED. The Compact recognizes the suspension of wildlife license privileges in the home state of any person whose license privileges have been suspended by a participating state. If you have had your privileges suspended in any of the participating states, you may lose your privileges in Wyoming, in addition to all the participating Compact states. Additional information about the Compact can be obtained by contacting the Wildlife Law Enforcement Coordinator at (307) 233-6413.

WIND RIVER RESERVATION. Only non-Indian owned, fee title lands are open to the taking of wildlife with a Wyoming license. Land status is complicated and lawful access must be investigated thoroughly. Sportsmen are advised it is their responsibility to determine land status prior to entering these areas.

Contact Information	In-State Toll Free #	Out-of-State Phone #
Cheyenne Headquarters	1-800-842-1934	1-307-777-4600
Casper Regional Office	1-800-233-8544	1-307-473-3400
Cody Regional Office	1-800-654-1178	1-307-527-7125
Green River Regional Office	1-800-843-8096	1-307-875-3223
Jackson Regional Office	1-800-423-4113	1-307-733-2321
Lander Regional Office	1-800-654-7862	1-307-332-2688
Laramie Regional Office	1-800-843-2352	1-307-745-4046
Pinedale Regional Office	1-800-452-9107	1-307-367-4353
Sheridan Regional Office	1-800-331-9834	1-307-672-7418
For more information and materials call: 1-307-777-4600 or visit our website at http://wgfd.wyo.gov		

Report All Wildlife Violations!




Text keyword
WGFD
and message to
TIP411
(847-411)

STOP POACHING
Help us Stand Watch
1-877-WGFD-TIP
(1-877-943-3847)
Out-of-State **(1-307-777-4330)**

Submit Tip Online: <http://wgfd.wyo.gov>

WYOMING



ACCESSYES

Donate to **ACCESS YES**
The Wyoming Game & Fish Department's
Private Land Public Wildlife (PLPW)
Access Program

The PLPW Access Program provides hunting and fishing access to nearly 2.8 million acres. Every dollar donated to Access Yes equals 3.7 acres of access for YOU! Donate today by calling (307) 777-4600 or when you purchase or apply for licenses.

The Wyoming Game and Fish Department receives federal financial assistance in Sport Fish and Wildlife Restoration. Under Title VI of the 1964 Civil Rights Act, Section 504 of the Rehabilitation Act of 1973, Title II of the Americans with Disabilities Act of 1990, the Age Discrimination Act of 1975, and Title IX of the Education Amendments of 1972, the U.S. Department of the Interior prohibits discrimination on the basis of race, color, national origin, age, sex, or disability. If you believe that you have been discriminated against in any program, activity, or facility as described above, or if you desire further information, please write to:

Department of Interior—U.S. Fish and Wildlife Service—Division of Human Resources
4401 North Fairfax Drive—Mail stop: 2000—Arlington, Virginia 22203